

NORTHERN

L I G H T S

February 2024



FIND PEAK VALUE WITH OFF-PEAK WATER HEATERS

Our region isn't known for its vast mountain ranges with high, towering peaks. The peaks we see are of the ENERGY variety – but Beltrami Electric has a program that beats those energy peaks and saves our members some serious bucks on their electricity bills. It's called the off-peak program, and an easy way to participate is by installing an electric water heating system on your cooperative's program.

"An average household spends up to 20% of its monthly electric bill on water heating, and an electric water heater is often more efficient than gas or propane models," said Bob Gregg, business development manager at Beltrami Electric. "With large-capacity electric water heater tanks ranging from 80-100 gallons (or larger), you'll never have to worry about running low on hot water. And when you set up your new electric water heater on Beltrami Electric's off-peak program, you're eligible for reduced electric rates as well as great rebates!"



- 1 A MOUNTAIN OF SAVINGS** – The peak in saving starts with installation. Not only will your water heater qualify for a reduced rate when set up on off-peak – up to half the standard rate – but there are also co-op rebates available up to \$800!
- 2 A SPIKE OF ENERGY EFFICIENCY** – On the off-peak program, your electric water heater will warm your water during lower-demand times of the day. The water tanks are specially insulated so there is little to no heat loss over 24 hours.
- 3 HEIGHTENED RELIABILITY** – During peak energy times of the day, our electrical grid can experience some serious strain. When your electric water heater is on the off-peak program, your water is heated during periods of lower demand which helps keep the reliability of our grid strong!

Beltrami Electric is a retailer of Rheem Marathon® non-metallic large-capacity electric water heaters. They feature a rugged polyethylene jacket that won't rust and are durable, lightweight and warranted not to leak as long as you own your home. We stock 50-, 85- and 105-gallon models, and will gladly assist you with the rebate process.

Visit ValueofElectricity.com to learn more about electric water heaters and how you can get peak savings when joining Beltrami Electric's off-peak program!





Rates and accomplishments

by Jared Echternach, president and CEO

Rates stable for sixth consecutive year

I'm pleased to announce that in December your board of directors approved the 2024 budget and work plan without a rate increase needed in 2024. This will mark the sixth consecutive year without a rate increase to our members. I'd like to personally thank your board of directors and employees for working diligently to control costs without sacrificing safety, reliability or service to our members.

Here are just a few of the 2023 accomplishments brought about due to the hard work and dedication of Beltrami Electric Cooperative's board of directors and employees.

Your BEC team constructed **260 services**.

BEC paid out more than **\$1.7 million in capital credits** to members. This includes general and estate retirements.

BEC paid out over **\$517,700 in energy efficiency rebates** to members.

BEC's Operation Round Up program **donated over \$82,500** to deserving nonprofit organizations in our area.

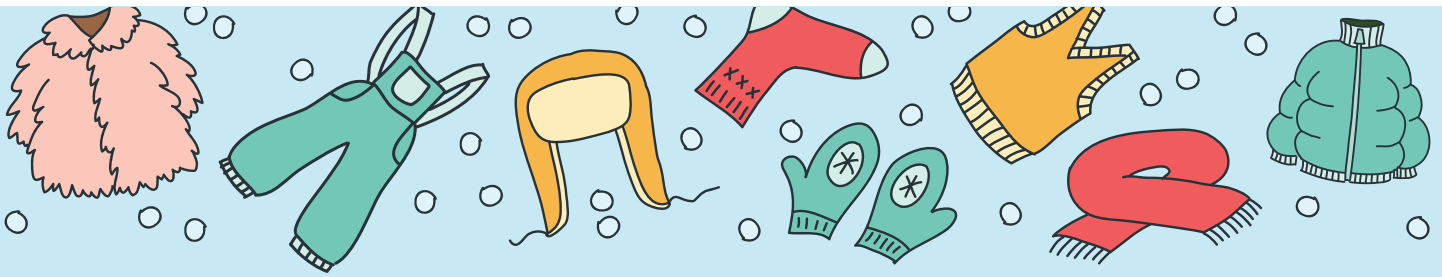
Cooperative employees donated more than **120 hours of personal time volunteering** with organizations they are passionate about.

BEC's Average Service Availability Index (**ASAI**) was **99.98**.

Cooperation Among Cooperatives

Cooperatives live by seven core principles, the sixth of which is Cooperation Among Cooperatives. This principle was on full display over the holidays as Beltrami Electric Cooperative line crews came to the aid of Cass County Electric Cooperative headquartered in Fargo, N.D. A severe ice storm blanketed Cass County's system over the holidays and 14 BEC lineworkers came to their aid, along with line personnel from several other cooperatives in western Minnesota and western North Dakota. The storm severely damaged their system with just under 1,200 poles on the ground. Our crews worked predominantly in the Valley City area. I'd like to thank our lineworkers for their commitment and dedication to our cause and for sacrificing a portion of their holiday to help others in need. I know Cass County Electric Cooperative members deeply appreciate the help. I also know that they would return the favor in a heartbeat if we're ever in need. Hats off and a big thank you to our lineworkers and those from other electric cooperatives who responded to help Cass County in its time of need.





Successful Beltrami Electric Mitten Tree

Beltrami Electric Cooperative (BEC) delivered donated mittens, gloves, hats, scarves and socks to children at eight area Head Start and Early Child Family Education (ECFE) programs, as well as St. Mary's Mission School and Heartland Christian Academy, as part of its annual Mitten Tree campaign. BEC received more than 1,000 donated items, including mittens, hats, scarves and socks. "The support from our members and communities is amazing," said Angela Lyseng, communications specialist at Beltrami Electric Cooperative. "Donating to our Mitten Tree warms a heart twice – both of the person giving and the child receiving."



BEC's Kathy Dreher helps deliver donated items to children at BICAP Head Start in Blackduck.

We would like to thank everyone who contributed to our Mitten Tree this year, whether you dropped off items, shipped them to us, or mailed in a cash donation to purchase items. We had individuals and many local churches and knitting groups donate items, and it was so fun to see the items that were selected or made with love for our area children.

Commitment to Community is one of our values as a cooperative. No matter how great or small the act, every time we give back, we strengthen our communities.



BELTRAMI ELECTRIC EMPLOYEE YEARS OF SERVICE RECOGNITION

The following employees were recognized for their years of service in 2023 (190 years combined).



Holly Solo (15 years), Bruce Huderle (15 years), Bob Gregg (20 years), Jessica Delaney (10 years), Eric Splichal (30 years), Sheila Story (25 years), Dan Dudgeon (25 years), Melissa Schroth (10 years), Amy Pillsbury (30 years), Jolene Kallroos (10 years).



ATTENTION: CLASS OF 2024

Beltrami Electric (BEC) is offering a **\$2,000 At-Large Scholarship** for students whose parent/guardian is a member of BEC. The At-Large Scholarship is available for students who are homeschooled, or who attend a charter school or other school not part of BEC's High School Scholarship Program. Find more information on our website at beltramielectric.com/scholarships.



APPLICATION DEADLINE IS APRIL 1, 2024

THE **PROS** AND **CONS** OF COAL

Coal has been an essential resource on our nation's electric grid for decades. But like all power supply options, it comes with its own set of strengths and challenges.

The following coal pros and cons illustrate why Minnkota Power Cooperative (our power supplier) maintains a diverse portfolio of coal, wind and hydropower – and why coal's strengths outweigh its challenges.

STRENGTHS

24/7 RELIABILITY

Coal-fired power plants provide a stable and continuous source of electricity, which is important for maintaining a consistent baseload power supply. Minnkota's Milton R. Young Station can produce coal-based power every minute of every day, as electricity needs to be used the moment it is generated.

RESILIENT OPERATIONS

Coal-based power plants have consistently proven they can operate in extreme conditions - from 100-degree summer days to 30-below-zero winter nights. While resources like wind and solar are dependent on ideal weather conditions, coal-based power plants can operate through the harshest of conditions.

ECONOMIC STRENGTH

Dependable power generation leads to stable costs. North Dakota's coal-based power plants provide competitively priced electricity that people across the Upper Midwest depend on. In North Dakota alone, the coal industry creates thousands of jobs in mining and power plant operations, and still more in those industries that support coal generation.

CONCENTRATED LAND FOOTPRINT

A 2020 report from the Brookings Institution found that electric generation from wind and solar requires at least 10 times as much land per unit of power produced than coal-based power plants. The concentrated nature of a coal power plant also means fewer transmission lines need to be constructed to bring electricity from generation point to substation.

CHALLENGES

EMISSIONS MANAGEMENT

Coal-based power plants must manage emissions levels to ensure environmental stewardship. Approximately \$425 million in state-of-the-art technology has been invested at the Milton R. Young Station to capture emissions of sulfur dioxide, nitrogen oxides, mercury, particulate matter and more. Plus, Minnkota is pursuing Project Tundra, a carbon capture and storage system that would significantly reduce CO₂ emissions.

BYPRODUCT MANAGEMENT

Generating electricity from coal requires the management of byproducts, like coal combustion residuals (CCR). Much of the bottom ash from the power plant is responsibly recycled into materials, including shingle grit and sandblasting material. CCRs that cannot be recycled are safely stored in approved storage cells. Plus, some CCRs can be reused safely to strengthen concrete, wallboard, bricks and more.

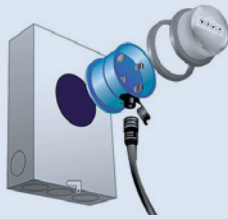
TEMPORARY LAND DISRUPTION

While coal mining does require the use of land, Minnkota and its partners at BNI Coal have developed an award-winning land reclamation program that returns these areas to their natural state (or better) once mining is complete.

DON'T BE LEFT IN THE DARK

GenerLink allows members to safely connect a portable generator to their home.

- GenerLink eliminates dangerous backfeed of electricity onto utility lines
- Gives users access to their entire breaker panel – they will have the ability to control what they want to operate with their generator
- Can be used with generators from 4kW to 10 kW, 120/240 volts
- Comes with a 20' GenerLoc power cord
- Safe, affordable, and can be installed in 20 minutes
- BEC's technicians will install the device at your electric meter



5 Ways to Save During Winter

Winter weather typically means increased energy use at home. Keep your bills in check with these tips to save energy—and money!

Mind the thermostat. If you have a traditional heating and cooling system, set the thermostat to 68 degrees or lower. Consider a smart or programmable thermostat for additional savings.

Get cozy. Add layers of clothing for additional warmth, and snuggle up under your favorite heavyweight blanket.

Don't block the heat. If your air vents or heating elements (like radiators) are blocked by furniture or rugs, your home isn't being adequately heated.

Take advantage of sunlight. Open window coverings during the day to let natural sunlight in to warm your home. Close them at night to block the chilly night air.

Block air leaks. Seal windows and exterior doors with caulk and weather stripping to improve indoor comfort and decrease the amount of energy used to heat your home.

WHAT IS backfeed?

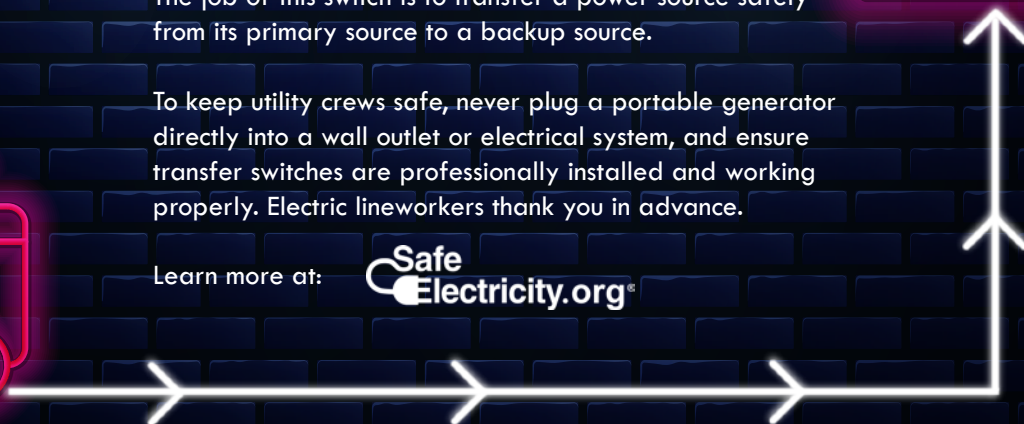
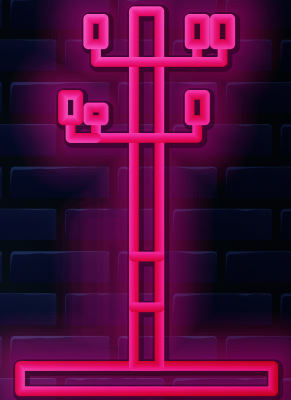
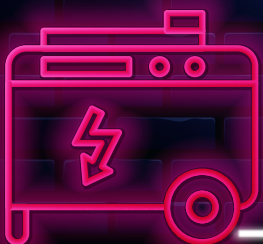
Avoid deadly backfeed and help keep lineworkers safe.

Backfeed happens when a person connects their portable generator to a wall outlet, which allows power to flow in reverse – that is, the alternate power source feeds energy back through their home's electrical system, their meter and back into the power lines.

Potentially deadly backfeed can also happen with permanently installed generators that are not used or installed correctly. They should be wired into your home by a qualified electrician, who will install either an automatic or manual transfer switch, depending on the generator. The job of this switch is to transfer a power source safely from its primary source to a backup source.

To keep utility crews safe, never plug a portable generator directly into a wall outlet or electrical system, and ensure transfer switches are professionally installed and working properly. Electric lineworkers thank you in advance.

Learn more at:



Classifieds

Classified ads rules

- Ads are due by the first of the month prior to publication of the next issue.
 - o Ads submitted by Feb. 10 will be published in the March issue.
 - o Ads submitted between Feb. 10 and Mar. 10 will be published in the April issue.
- Ads may be submitted via our website at www.beltramelectric.com/submit-ad.
- No real estate, rental, personal or commercial ads will be accepted.
- All ads must be 50 words or less and typed or printed clearly.
- Editor reserves the right to edit or reject any ad.
- Members may only submit one for sale and one wanted or free ad per issue.
- Ads are published at no charge as space permits on a first-received, first-printed basis, **with no guarantee your ad will appear**.
- Ads are only allowed to be repeated for **three consecutive months** and must be resubmitted each month.
- Include name and Beltrami Electric account number on all submissions.

For Sale:

(5) 28x62 Anderson Windows new still in wrapping didn't need in construction. \$900 for all of them, will sell for \$230 each. You pick up in Cass Lake. 218-556-7222.

Estate sale, everything must go. Many household items. Please contact Rachel at 218-444-1489.

2018 Jayco Greyhawk Prestige motorhome, 32' w/2 slides, like new, 7,000 miles, double fridge, 3 TVs and many extras, below book, \$89,900. 970-901-2605.

Quality solo canoe, Jensen Mohawk, 16 ft long, under 50 lbs. Asking \$800. 218-586-3585.

PreCor 9.21 treadmill. Well taken care of. Low impact with a magnetic safety key. Owner's manual included. 0.5 to 10 mph, 1-15% incline in 0.5% increments. \$350/obo. 218-766-4210.

Columbia boy snow pants: size 4-5, never worn, \$20; (size 14-16, \$12); (size 18-20, \$20); new sheets queen \$20; new full sheets \$35; new robe (L) \$20; Vintage Black Coach purse \$50; Call 218-368-4973, leave message.

Snow rake with extensions \$49. Ice chipper with wood handle. 6.5" blade, 57" \$10. White furniture set includes desk, bedside table, storage drawer, stackable shelf unit. Sold by Room and Board. Ideal for office or bedroom \$175. Great shape. 320-583-0471.

Guardian Signature rolling walker with basket, like new, \$130. Guardian Envoy 480 rolling walker used but in great shape, no basket. \$100. Two Drive Deluxe Two Button folding walker with 5" wheels, great condition. \$25 each. 218-556-8698.

Large white oak desk with hutch and swivel chair, \$395. Dark oak bookcase, waterbed headboard, and frame with innerspring mattress \$100. 701-740-2601.

Designer half-moon mirror with 4 hooks. Good for jackets, etc. Good condition - \$4. Munchkin toddler bedrail. Good condition - \$3. Girl's clothing size 10-12. Tops, sweaters, and jeans - \$2 each. 218-368-1141.

Quilt Easy quilt frame and poles/headers for use with your sewing machine;

includes queen and king size extensions and Handi-Handles with on/off switch, thread cutter, and speed control. \$500/obo. 307-315-0949 (cell).

Prayer plant, about 2 feet high. 218-766-8781.

Kenmore 30" propane kitchen stove. Oven does not work. Very nice shape. \$225. 218-766-7461, ask for Mark.

High-top table and 4 chairs: light sage green, excellent condition \$200. Oak entertainment center fits 32" TV, glass door, bottom storage - good condition, \$150. 218-308-0949.

Hitachi 12-in compound miter box saw. C12RSH Laser. \$300. 2006 Yamaha V Star 1100. 27,000 miles. Lots of extras. Have original parts also. \$3200. 218-766-3544.

10 Harness Floor Loom, old. B4 Macomber Loom 4602. 48 weaving width, ALL wood, folded dimensions: 33" wide, 50" tall, 62" long. \$600. Chest freezer, old, excellent condition \$50. 218-759-9339.

Polaris Crew premium roof liner - new in box. Designed to fit: 2022-2023 Ranger Crew SP 570 models. \$400. 218-556-0805.

Wanted:

257 Roberts rifle. 218-835-6420.

Used wood splitter. 218-586-2544.

Retired teacher is currently accepting small pets in my home to take care of. 218-766-6510.

Clean out your closets, drawers, and storage. I'm looking for all types of older clothing, all sizes, no undergarments. Text 218-255-4543.

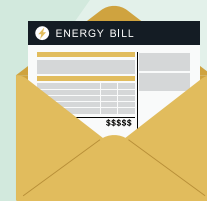
Free:

An overhead projector and a FAX machine - both work. 218-224-3466 Guthrie.

NEED HELP PAYING YOUR ELECTRIC BILL?

Energy assistance may be available!

The Energy Assistance Program (EAP) helps pay for home heating costs and furnace repairs for income-qualified households. We urge you to contact them immediately to avoid disconnection if you feel you are eligible for aid. (Eligibility is based on energy costs, household size and the most recent month of income.)



BI-CAP IN BEMIDJI
6603 Bemidji Ave N
Bemidji, MN 56601
218-751-4631

BI-CAP IN WALKER
8245 Industrial Park Rd NW
Walker, MN 56484
218-547-3438

KOOTASCA
201 4th Street NW, Suite 130
Grand Rapids, MN 55744
218-999-0824

LEECH LAKE
115 6th St
Cass Lake, MN 56633
218-335-3783

MAHUBE-OTWA
120 North Central Ave
Park Rapids, MN 56470
218-732-7204

RED LAKE
15809 High School Dr
Red Lake, MN 56671
218-679-3350



SCAN ME

OR APPLY ONLINE

Visit energy-assistance.web.commerce.state.mn.us for EAP income guidelines and program information.

BOARD MEETING HIGHLIGHTS

Beltrami Electric Cooperative's board conducted its regular monthly meeting Wednesday, Dec. 27, 2023. A quorum of directors was in attendance.

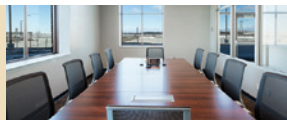
The following reports were given at the meeting:

- President and CEO Echternach and the board discussed recent safety successes and observations.
- President and CEO Echternach made his monthly report, including 2024 membership to America's Electric Cooperative's PAC and REPAC, financials, budget, Operation Round Up®, proposed policy revisions, legislative issues affecting electric cooperatives and a Rural Electric magazine article.
- Arlene Hogquist presented the November financial report and financial forecast.
- President and CEO Echternach and the management team presented the 2024 Budget and Work Plan.

- Mike Birkeland presented the 2024 Marketing and Communications Plan.
- President and CEO Echternach presented the Non-Union Compensation and Benefits Plan.
- President and CEO Echternach presented proposed revisions to BEC Policies.
- Directors and President and CEO Echternach discussed upcoming meetings and events.

The following actions were taken at the meeting:

- Approved the consent agenda.
- Approved the 2024 Budget and Work Plan.
- Approved the 2024 Marketing and Communications Plan.
- Approved the Non-Union Compensation and Benefits Plan.
- Appointed Kay Mack and Miriam Osborn-Dougherty to serve a three-year term on the board of directors of Beltrami Electric Cooperative Trust (Operation Round Up®).
- Approved the BEC policy revisions.
- Approved an appreciation letter recognizing employees for their dedication and incredible job in 2023.
- Appointed Sharon Lembke as the NRTC Annual Meeting voting delegate and Sue Kringsen as the alternate.
- Approved director and president and CEO expenses.



The next board meeting will be held Thursday, Feb. 22, 2024.

UNCASHED CAPITAL CREDIT CHECKS

Capital credit checks issued to these former members in December 2023 were returned to BEC. If you know anyone on this list, let them know they can contact our office by calling **218-444-2540** or **1-800-955-6083** or via email at info@beltramelectric.com to update their contact information and claim their capital credits. A complete list of unclaimed capital credits can be found at beltramelectric.com/capital-credits.

ALLEN, TANYA; CASS LAKE, MINN.
ALTO, STEPHEN; *BEMIDJI, MINN.*
ANDERSON, COREY & SOLBERG, PREVIN; *BEMIDJI, MINN.*
ARMES, DIANA; KANSAS CITY, MONT.
ARMSTRONG ESTATE, PAUL; *BEMIDJI, MINN.*
BABINEAU, JOHN & BEKKI; CLOQUET, MINN.
BAILEY ESTATE, LARRY; PUPOSKY, MINN.
BARNUM, MICHAEL; ANOKA, MINN.
BAUS, LESLIE; PELICAN RAPIDS, MINN.
BEAULIEU, JOEY; RED LAKE, MINN.
BEAULIEU, TIMOTHY JR & LATASHA; RED LAKE, MINN.
BENNETT, ANNETTE; SAN CLEMENTE, CALIF.
BERGUM, JAMES; WALKER, MINN.
BILIZIL, JOHN & NANCY; BAXTER, MINN.
BLUE, CAROL; *BEMIDJI, MINN.*
BOOTH, GUS; WARROAD, MINN.
BORG, DANIELLE; BROOKLYN PARK, MINN.
BOYER, JORDAN & LESHEENA; SPRINGFIELD, KENT.
BOYNTON, LISA & SUNDERLAND, DANIELLE; BAGLEY, MINN.
BREDEMUS, TERRANCE & RACHEL; LAPORTE, MINN.
BROWN, NATHAN; HUTCHINSON, MINN.
BRUNS, CRAIG & GWEN; ERHARD, MINN.
BUCZYNSKI, DENNIS; ROCKFORD, ILL.
BURNETT, DAVE & BEVERLY; CASS LAKE, MINN.
BUZZELL, MARY; COON RAPIDS, MINN.
CANTON, GREG; KENYON, MINN.
CAPOUCH, MARK & DEBRA; HIBBING, MINN.
CARAWAY, BOBBY JR. & TAMMY; ATLANTA, TEX.
CARLSON, DRENDA; *BEMIDJI, MINN.*
CARLSON, ERIKA; *BEMIDJI, MINN.*
CARLSON, JEFFREY; HIBBING, MINN.
CASTO, THOMAS & MARY; *BEMIDJI, MINN.*
CENTURY 21 TRANS WILLOUGHBY PROPERTY; APPLE VALLEY, MINN.
CENTURY 21 TRANS WILLOUGHBY PROPERTY; *BEMIDJI, MINN.*
CHANDLER, MAX & WILLIAM; *BEMIDJI, MINN.*
CHARNOSKI III, DAN; RED LAKE, MINN.
CHENEY, WILLIAM; BLACKDUCK, MINN.
CLARK, ELAINE; *BEMIDJI, MINN.*
COBORN, THOMAS & LISA; PARK RAPIDS, MINN.
COLE, ROBERT & SUSAN; SANFORD, N.C.
CONNELLY, EUGENE & IRENE; MURRELLS INLET, S.C.
COOK, JOSHUA & ANGEL; BAUDETTE, MINN.
CRAMER, TIMOTHY; CHUCKEY, TENN.
CROSLEY, RICHARD & DARLENE; PARK RAPIDS, MINN.
CROWELL, MARY; AKELEY, MINN.
DAMJANOVICH, MICHAEL & WARNER, AMY; HIBBING, MINN.
DEEGAN, VENESSA; *BEMIDJI, MINN.*
DEEMS, DARLENE; UMPQUA, OREG.
DEFOE, KRISTINA; DETROIT LAKES, MINN.
DEGIDIO, PEGGY; WALKER, MINN.
DEVELICE, CHRIS & LAURIE; FOND DU LAC, WIS.
DEVRIES, LEIGHANN; ROCHESTER, MINN.
DOUGHTY, CHARLES; PUNTA GORDA, FLA.
DOUST, BARBARA; BLACKDUCK, MINN.
DRIETZ, MATTHEW & AMANDA; MOTLEY, MINN.
DUBOVICH, FARYNRHAYE; HARRIS, MINN.
ECKDAHL, STEVEN & DAWN; *BEMIDJI, MINN.*
EMERY, CHUCK & LIANA; MINNEAPOLIS, MINN.
ERICKSON, SANDRA & MICHAEL; EDEN PRAIRIE, MINN.
ERPELDING, CRAIG; BRAINDER, MINN.
ERPELDING, JACQUELINE; *BEMIDJI, MINN.*
EWING, CLYDE; LAKE STEVENS, WASH.
FAHRLANDER, SEAN; *BEMIDJI, MINN.*
FALIN, GERALD; LAWTON, OKLA.
FEVOLD, JEFFERY; ROSEAU, MINN.
FISHER, RACHEL; MINOT, N.D.
FISKE, PAUL & BECKY; STACY, MINN.
FREUDE, PAUL & PEARL; *BEMIDJI, MINN.*
FREUND, DANIEL & DEBRA; RICE, MINN.
FULLER, KORY & LORI; DULUTH, MINN.
GALLAGHER, FULTON & NANCY; ROCHESTER, MINN.
GAVERE, PHILLIP & LOLITA; MILTON, FLA.
GECKLER, RICHARD; LAKEVILLE, MINN.
GEER, WILLIAM; MINNEAPOLIS, MINN.
GERSZEWSKI, TOM; SEBEKA, MINN.
GEVING, JAYNE; CASS LAKE, MINN.
GODWIN, NICHOLE; *BEMIDJI, MINN.*
GORNIK, JOHN; HUTCHINSON, MINN.
GOTHBERG, ROSA; GRAND RAPIDS, MINN.
GOUIN, MADELINE; INTL FALLS, MINN.
GRAHAM, BOBBI; *BEMIDJI, MINN.*
GRANGER, BRIAN & TAMMY; PARDEEVILLE, WIS.
GRASER, JAMES; OSHKOSH, WISC.
GREENSIDE, ABBY; *BEMIDJI, MINN.*
GROVE, SARAH; NAYTAHWAUSH, MINN.
GROVEN, RAMONA; THIEF RIVER FALLS, MINN.
HAMMAN, TAMELA; FAIRDALE, KY.
HANSEN, CRYSTAL; DETROIT LAKES, MINN.
HANSON, MICHAEL; YUMA, ARIZ.
HENDRICKS, STEPHEN & CHERYL; KATY, TEX.
HENDRICKS, STEPHEN & KRIS; KATY, TEX.
HENSCH, LORNA & GARY; MAHNOMEN, MINN.
HICKEY, ANN; STURGEON BAY, WIS.
HICKEY, LYNN; *BEMIDJI, MINN.*
HOFFARTH, DANIEL; CASA GRANDE, ARIZ.
HOLMES, CARYN; MADISON, WIS.
HOLTE, ALEX & WELLE, CHRIS; *BEMIDJI, MINN.*
HORN, SHIRLEY; QELLTON, ARIZ.
HORTON, JENNY; BLACKDUCK, MINN.
JOHANSSON, CHARLES; BLOOMINGTON, MINN.
JOHNSON, BECKY; *BEMIDJI, MINN.*
JOHNSON, DEBRA; WIRT, MINN.
JOHNSON, DION; PAYNESVILLE, MINN.
JOHNSON, LORRAINE; CASS LAKE, MINN.
JOHNSON, MARY; VENICE, FLA.
JOHNSON, MELANIE; REDBY, MINN.
JOHNSON, RHIANNA; *BEMIDJI, MINN.*
JOHNSTON, EILENE; GRAND RAPIDS, MINN.
JONES, DENNIS; PENSACOLA, FLA.
JONES, PATRICE; *BEMIDJI, MINN.*
JONES, SALINA; REDBY, MINN.
JUNGWIRTH, WILLIAM; *BEMIDJI, MINN.*
KAUFMAN, AARON & HASS, RYAN; HERON LAKE, MINN.
KELLERMAN, JUNE; SEBRING, FLA.
KING, LORRAINE; REDBY, MINN.
KINGBIRD, KELLY; CASS LAKE, MINN.
KISE, KEVIN; ANGUS, MINN.
KLINE, ROBERT; COAL VALLEY, ILL.
KNUDSON, DELMER & LYLA; MOORHEAD, MINN.
KOS, KARLEEN; BRANDON, FLA.
KUHLMAN, JAMES JR.; *BEMIDJI, MINN.*
LANDA, PAMELA; HELENA, MONT.
LARSEN, ERIC; EAGLE RIVER, ALASKA
LARSON, MICHAEL; NORWALK, WIS.
LILLEBY, CLAYTON; *BEMIDJI, MINN.*
LINDAHL, PAMELA; LAPORTE, MINN.
LINDSTROM, SERIANNA; PLYMOUTH, MINN.
LITTLEWOLF, JOHN & SHANNON; ANOKA, MINN.
LONG, PATRICIA; *BEMIDJI, MINN.*
LOPEZ, TANA; CHINO, CALIF.
LOVELACE, ROSALIE; CASS LAKE, MINN.
LUNA, ALBERT & JENNIFER; BLACKDUCK, MINN.
LUSSIER, ALLEN; REDLAKE, MINN.
LUSSIER, MIKE; REDBY, MINN.
LUSTER, EILEEN; *BEMIDJI, MINN.*
LYONS, LORENE; RED LAKE, MINN.
MANCHANDA, VINI & GLENDA; HUDSON, WIS.
MARCUKAITIS, MICHAEL; BOURBONNAIS, ILL.
MARSCH, VERNA; GRAND RAPIDS, MINN.
MASINO, DOLORES; *BEMIDJI, MINN.*
MCALLISTER, DONNA; *BEMIDJI, MINN.*
MCLAIN, RICHARD; SPICER, MINN.
MENDOZA, MATEO; REDBY, MINN.
MERCCK, FERDINAND & KATHLEEN; MINOT, N.D.
MICKELSON, DANIEL; SPRINGFIELD, VA.
MOE, KAREN; *BEMIDJI, MINN.*
MOEN, TROY & PAM; HINES, MINN.
MOORE, HARLEY; CULBERTSON, MONT.
MORRIS, MATTHEW & KLUCHNIK, AYNSELY; SIOUX FALLS, S. D.
MORRISON, RUSSELL; BRAINERD, MINN.
MULVANEY, TOM & LUANN; CROOKSTON, MINN.
NATVIG, ELIZABETH; EAGAN, MINN.
NELSON, DAVID & SANDRA; MAPLE GROVE, MINN.
NEWAGO, SHERRI & MICHAEL III; CASS LAKE, MINN.
NEWMAN, TARA; THIEF RIVER FALLS, MINN.
NORRIS, RANDALL SR.; *BEMIDJI, MINN.*
OLSEN, ROSS & PATRICIA; CLEARBROOK, MINN.
PANKRATZ, MICHAEL & HAMANN, ELIZABETH; BELCHERTOWN, MASS.
PARIS, SIMONE; BILOXI, MISS.
PARKER, DARREN & EDWARDS, STEPHANIE; DAYTON, OHIO
PARMENTER, PAMELA; FERGUS FALLS, MINN.
PAUL, JOHN; *BEMIDJI, MINN.*
PAYSSSE, NELSON; MOORHEAD, MINN.
PETERS, REBECCA; *BEMIDJI, MINN.*
PETERSON, MARY; THIEF RIVER FALLS, MINN.
PETERSON, RAIELLE; ST. MICHAEL, MINN.
PETERSON, SHAUN & MONICA; CASCADE, IDAHO
PFEIFER, KELLY; HELENA, MONT.
PITMAN, JAMES & MYRNA; INGRAM, TEX.
PORTER, JAMES & SHERYL; *BEMIDJI, MINN.*
POWERS, DR. WILLIAM; GRAND FORKS, N.D.
REA, ELAINE; ONAMIA, MINN.
REESE, ELROY & JANE; ALEXANDRIA, MINN.
REILLY, TIMOTHY; *BEMIDJI, MINN.*
REIPLINGER, BETTY; CASS LAKE, MINN.
RIAL, THOMAS & JUDITH; WALKER, MINN.
RICHARDS, GARY; LESSBURG, FLA.
RICHARDS, MICHAEL; TUCSON, ARIZ.
ROBBERSTAD, STEVEN; ST. CLOUD, MINN.
ROBERTS, ROXANNE; RED LAKE, MINN.
ROCKENSOCK, RICHARD & HEATHER; BAGLEY, MINN.
RODRIGUEZ, MARIO; CASS LAKE, MINN.
ROSENAU, ANITA & RICHIE, SCOTT; WOOD LAKE, MINN.
ROY, SHELLY; CASS LAKE, MINN.
RUCKER, LARRY; ORONOCO, MINN.
RUTLEDGE, ROBERT; *BEMIDJI, MINN.*
SAM, LINDA; ONAMIA, MINN.
SANDERS, DIANA; MINNEAPOLIS, MINN.
SARGENT, COREE; *BEMIDJI, MINN.*
SCHAUER, DARWIN; LAPORTE, MINN.
SCHWERSINSKE, GARY; FORT MYERS, FLA.
SELLMAN, RICHARD; HIBBING, MINN.
SHUPICK, KAREN; JENKS, OKLA.
SIMPKINS, MICHAEL; *BEMIDJI, MINN.*
SKAVLEM, JEAN; GRAND FORKS, N.D.
SLOUGH, GERALD & CHARLENE; FOSSTON, MINN.
SORENSEN, AMY; *BEMIDJI, MINN.*
SORENSEN, DENEICE; STARBUCK, MINN.
SPANGLER, WAYNE; RICE LAKE, WIS.
SPEARS, GERALD; RED LAKE, MINN.
SPEARS, JENNIFER; RED LAKE, MINN.
SPEARS, LARAYNE; *BEMIDJI, MINN.*
STACH, DONALD; MADEIRA BEACH, FLA.
STEINBRINK, GRETA & DUSTIN; AUSTIN, MINN.
STELMAN, FRANCIS; PHOENIX, ARIZ.
STEPANIAK, DARLENE; *BEMIDJI, MINN.*
STERLING, EDWARD; *BEMIDJI, MINN.*
STEWART, TROY & JILL; PORT CHARLOTTE, FLA.
ST. JOHNS EPISCOPAL CHURCH; REDLAKE, MINN.
STRANDBERG, GUY; TWIN LAKE, MINN.
SWEAZEY, JESSICA; *BEMIDJI, MINN.*
TAATJES, RODNEY; WALKER, MINN.
TABYANAN, ISADORE; BUNNELL, FLA.
THIENES, WALTER; BLACKDUCK, MINN.
THOMAS, PAUL & KARIN; *BEMIDJI, MINN.*
THOMPSON, KEITH & SARAH; LEES SUMMIT, MO.
TOAL, LENORA; RED LAKE, MINN.
TODD, ALLEN JR.; *BEMIDJI, MINN.*
TOSTENSON, JEAN; ALBERT LAKE, MINN.
URRUTIA, KYLE; LAPORTE, MINN.
VAN TRAN, THOMAS & THI LE, DIEM PHUONG; LAKE GENEVA, WIS.
VETSCH, DON & JULIE; EMERADO, N.D.
VOGES, JOHN; MONTEVIDEO, MINN.
VOIROL, LAVERN; CHANNING, MICH.
WANGBERG, MARK & VICKIE; *BEMIDJI, MINN.*
WAWRZYNIAK, CONRAD; FENTON, MICH.
WEINZETL, ALLEN; BREWSTER, MINN.
WEISSER, JODI; ST. PAUL, MINN.
WELLS, CHERYL; CASS LAKE, MINN.
WENTZ, AUDREY; BLOOMINGTON, MINN.
WESTLUND, HOWARD; *BEMIDJI, MINN.*
WESTRUM, JESSE & SHANNON; *BEMIDJI, MINN.*
WHIPPS, DANIEL; SUPERIOR, MONT.
WHITE, KENNETH & DONNA; CENTRAL, UTAH
WHITECROWE, KYLA & CHAPMAN, ADRIAN; WELANDI, MINN.
WILMINDER, JOY; BECIDA, MINN.
WILKENIONG, BRAD; SAUK RAPIDS, MINN.
YOUNG, DOREEN; GUN BARREL CITY, TEX.
YOUNG, DWAYNE; *BEMIDJI, MINN.*

NORTHERN

L I G H T S

FEB 2024 | VOL. 71 | NO. 2

Northern Lights (USPS 016488)

Published monthly by Beltrami Electric Cooperative Inc., 4111 Technology Drive NW, Bemidji, Minnesota 56601-5128. Subscription rate is \$5. Periodicals postage paid at Bemidji, MN 56601.

POSTMASTER: Send address corrections to Beltrami Electric Cooperative Inc., P.O. Box 488, Bemidji, Minnesota 56619-0488.

OFFICERS AND DIRECTORS

ChairJohn Lund, *DISTRICT 7*

Vice ChairSue Kringen, *DISTRICT 8*

SecretaryMurl Nord, *DISTRICT 1*

TreasurerSharon Lembke, *DISTRICT 9*

Directors: Charlie Perkins, *DISTRICT 2*; Vacant, *DISTRICT 3*; Craig Gaasvig, *DISTRICT 4*; Robert Wallner, *DISTRICT 5*; Rick Coe, *DISTRICT 6*

President and CEOJared Echternach

Editor.....Angela Lyseng

Office Hours: 8:00 a.m. – 4:30 p.m.
Monday – Friday

Telephone: 218-444-2540 or
1-800-955-6083

Website: www.beltramielectric.com

Email: info@beltramielectric.com

MN STATE ELECTRICAL INSPECTORS

Any time you or an electrician does wiring or other electrical work at your home or farm, Minnesota state law requires a state wiring inspector to conduct a proper inspection of the work. A rough-in inspection must be made before any wiring is covered. A final inspection is also required. Please visit www.dli.mn.org for more information. Inspectors can be reached weekday mornings between 7 a.m. and 8:30 a.m.

BELTRAMI COUNTY:

Wade Koons | 218-255-3011
wade@koonsinspections.com

CASS & HUBBARD COUNTIES:

Tony Kohrs | 218-616-1554
kohrsinspection@paulbunyan.net

GOPHER STATE ONE CALL

1-800-252-1166 or 811
www.gopherstateonecall.org



Anyone who plans to dig is required by law to notify the state of their intentions at least 48 hours in advance. All digging requires the 48-hour notification so that buried telephone line, television cable, pipelines, utility electric lines, municipal water and sewer lines can be located to ensure that none will be severed or damaged.

OUR MISSION STATEMENT

To provide excellent value to our members through the safe delivery of reliable electric service, excellent member service and innovative energy solutions at fair and reasonable prices.

This institution is an equal opportunity provider and employer.



Beltrami Electric Cooperative Inc.

® Your Touchstone Energy® Cooperative

Connecting Communities.
Powering Life.



**HIGH SCHOOL JUNIORS...
WIN A WEEK IN
WASHINGTON, D.C.!**
June 18 - 23, 2024

**Application
Deadline:**
Feb. 23, 2024

The

ELECTRIC COOPERATIVE

YOUTH TOUR

- ★ Visit historic monuments and museums
- ★ Build lifelong friendships
- ★ Boost your community service and engagement
- ★ Meet with your U.S. Representatives and Senators
- ★ Learn about the Cooperative Difference



Applicant's parent or guardian must be a member of Beltrami Electric Cooperative

For more details or to apply online,
scan the QR code:

