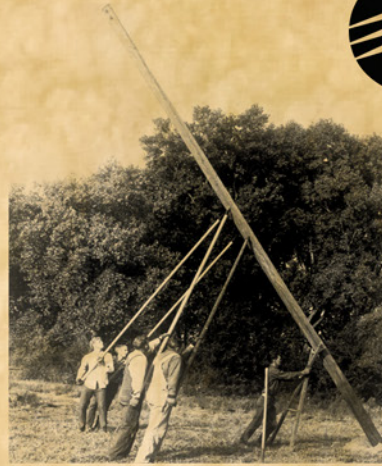


NORTHERN

L I G H T S

May 2015

 **Beltrami Electric
Cooperative Inc.**
® Your Touchstone Energy® Partner 



*75th annual meeting and anniversary
celebration open house June 24, 2015*

Northern Lights (USPS 016488), Vol. 62, No. 5 is published monthly by Beltrami Electric Cooperative Inc., 4111 Technology Drive N.W., Bemidji, Minnesota 56619-0488. Subscription rate \$5. Periodicals postage paid at Bemidji, MN 56601.

Postmaster: Please send address corrections to Beltrami Electric Cooperative Inc., P.O. Box 488, Bemidji, Minnesota 56619-0488.

Office Hours: 8 a.m. to 4:30 p.m.
Monday – Friday

Customer Service: 218-444-2540
or 1-800-955-6083

www.beltramielc.com

Board of Directors

President	Rick Coe, DISTRICT 6 (Square Butte Director)
Vice President	Jeff Nelson, DISTRICT 3
Secretary	Murl Nord, DISTRICT 1
Treasurer	Judy Honer, DISTRICT 9
Directors:	Lea Perkins, DISTRICT 2; Jerry Larson Sr., DISTRICT 4; Robert Wallner, DISTRICT 5; John Lund, DISTRICT 7; Terry Diffley, DISTRICT 8, (Minnkota Director)
General Manager	Lynette Nieuwsma
Editor	Angela Lyseng

Minnesota State Electrical Inspectors

Beltrami and Clearwater Counties
Davis Smid

507-227-2772 - mntristate@gmail.com

Cass and Hubbard Counties
Steve Schauland

218-652-2213 or fax 218-333-0451

These are the inspectors covering the area served by Beltrami Electric. They can be reached by phone Monday through Friday between 7 and 8:30 a.m. or by fax or email as indicated.

Gopher State One Call 1-800-252-1166 or 811

Anyone who plans to dig is required by law to notify the state of their intentions at least 48 hours in advance.

All digging requires the 48-hour notification so that buried telephone line, television cable, pipelines, utility electrical lines, municipal water and sewer lines can be located to ensure that none will be severed or damaged.

ON THE COVER: Beltrami Electric Cooperative will celebrate its 75th anniversary with an open house on Wednesday, June 24. We hope you are able to attend and celebrate with us.



Across ^{the} MANAGER'S DESK

Lynette Nieuwsma, General Manager

If you lived in the area served by Beltrami Electric Cooperative 75 years ago, you would have experienced darkness so complete it might have frightened you. Except for the feeble orange glow from a lantern carried by a farmer tending his chores, there was no light.

It was a time of great hardship for the people living outside the city limits. Your day began and ended with the rise and set of the sun. There was no indoor plumbing. Water had to be carried from a creek, lake or a shallow well. When nature called, one headed to the outhouse, where a daily battle was waged with wasps, spiders and snakes.

Imagine cooking on a wood stove today. Many housewives cooked with a lantern in one hand and a spoon in the other. What about laundry? Laundry day meant hauling more water, heating it in an iron kettle and then boiling the clothes in hopes of removing the grime. Clothes were then scrubbed on a corrugated washboard, taking care to not scrub the knuckles as well. The clean clothes were hung on a clothesline, outside in the summer, and wherever space could be found inside during the winter. Imagine having to break the ice off of your sheets before putting them back on the bed!

How many of you can remember the day the lights came on? I'm not talking about when you got power restored after the last severe storm. The day the lights came on in the rural areas of Minnesota was a great moment in our history.

As we approach our 75th anniversary in June, it is only appropriate to acknowledge the foresight and determination of our

original founding board members: John Wolden, Saum; Charles Moller, Pinewood; Peter J. Welter, Puposky; Emil Gustafson, Puposky; Lilly Bakkum, Bemidji; Emil E. Schulke, Tenstrike; Alma Gerlinger, Bemidji; Ben Goranson, Kelliher; and John A. Engberg, Blackduck. These nine people, along with help from the local county agricultural agent, Milton B. Taylor, held meetings and after a vote, it was determined that a rural electric cooperative should be formed. This meeting was 75 years ago, on June 20, 1940; our 2015 annual meeting will be a few days after this date on June 24, 2015.

They then took up the task of selling \$5 memberships to every rural family in Beltrami County who wanted electricity. They worked to obtain loans from the federal government, through REA to get started. Today, Beltrami Electric Cooperative, Inc. is their legacy.

There is an old saying that electric cooperatives were born in politics, and if they die, they will die in politics. One hallmark of those early pioneers was their willingness to get involved in this fight, whether it was taking on a representative, senator and even the president of the United States who tried to introduce legislation harmful to the cooperatives, or some state bureaucrat whose actions threatened to increase rates. They wrote letters, made phone calls and even showed up in person to rally behind their electric cooperative.

Today's electric cooperative faces similar challenges, both in Washington, D.C., and at our state capitol. It's a fact that virtually all of the rate increases

you have seen in recent years have been the result of new regulations affecting power supply.

You may not realize, but your electric cooperative pays an electric bill too. Each month, some 70 percent of the cooperative's revenue is used to pay for wholesale power. And the price for that power is greatly affected by regulations handed down from Washington, D.C.

We realize many of our members struggle paying even a small increase in electric rates. One of the most important things you can do as a member is get involved. I will continue to keep you informed on any upcoming legislation that will ultimately threaten the price you pay for electricity. It is our goal to make sure that any changes being proposed by Congress or the Environmental Protection Agency are both fair and affordable solutions in regard to energy generation both in the Minnkota system and across the country.

Would you have the strength and courage to do what those pioneers did in 1940? Could those of you here today turn darkness into daylight by wiring the countryside, even in the face of naysayers who said the job couldn't be done?

Those of you who do remember what it was like to live without electricity, please share your story with your children and grandchildren. Please share them with us as well, so we can share with other members (contact Angela Lyseng at 444-3689 or alyseng@beltramielectric.com). Don't let this great American success story be forgotten.

Please join us to celebrate our 75th anniversary on June 24, 2015. We will have our annual meeting early that afternoon, followed by an open house at our headquarters at 4111 Technology Dr. NW in Bemidji. There will be lots of events for kids and adults alike! We will also distribute our 75th anniversary cookbook to members in attendance (you must attend the meeting to receive a complimentary copy – limited to one per membership). Bring the whole family for an afternoon or evening of fun and prizes! Look for more details in next month's newsletter, which will also be our annual report to our membership. I look forward to seeing you there!

Lynette

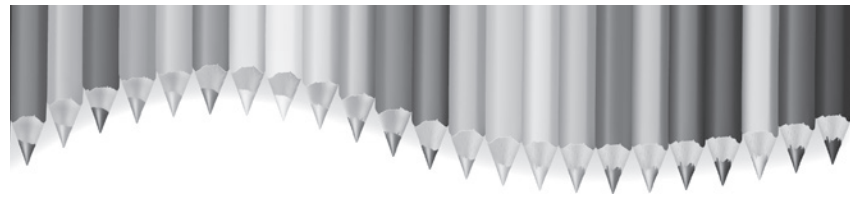
Annual meeting notice

The 75th annual meeting of the members of Beltrami Electric Cooperative, Inc. will be held at Beltrami Electric headquarters, 4111 Technology Drive NW, Bemidji, Minn., at 3:30 p.m. on Wednesday, June 24, 2015, for the following purposes:

1. To pass upon reports covering the previous fiscal year;
2. To elect three (3) directors of the cooperative in accordance with the Bylaws, one each in Districts 3, 7 and 9, each for a three-year term;
3. To transact such other business as may come before the meeting.

In order for members who are other than natural persons, such as a corporation, cooperative, school, church, township (or any other non-natural person) to *nominate* a representative to serve on the board of directors and *participate* in business matters, a form must be received by the secretary of Beltrami Electric Cooperative on or before the date of the members' meeting(s). To receive a copy of this form, please contact the co-op at 218-444-2540.

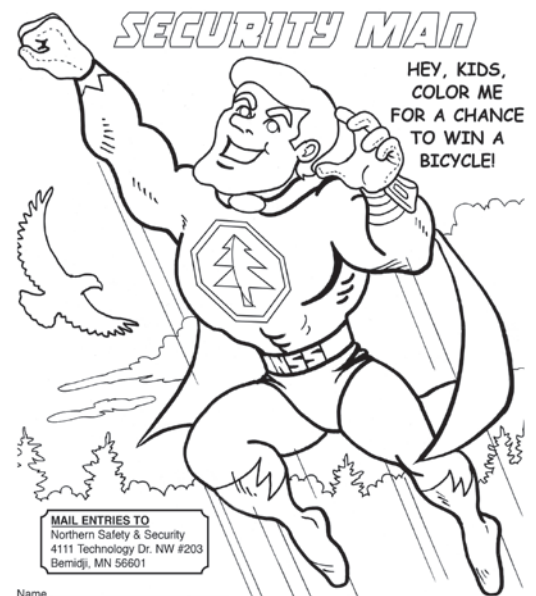
Murl Nord, Secretary
Beltrami Electric Cooperative, Inc.
Board of Directors



Hey kids!

Color Security Man for a chance to win a new bicycle!

Print out a coloring sheet of Security Man from www.northss.com or pick up a copy in the Beltrami Electric Cooperative lobby. When you are done with your artwork, please mail the sheet to Northern Safety & Security, 4111 Technology Dr. NW #203, Bemidji, MN 56601.



MAIL ENTRIES TO
Northern Safety & Security
4111 Technology Dr. NW #203
Bemidji, MN 56601

Name _____
Age _____
Address _____
Phone # _____

Must be 12 or younger to enter –
One winner drawn per cooperative

ENTRY DEADLINE:
must be postmarked by **MAY 22, 2015**
Prize Winners to be announced **MAY 29, 2015**

Please check which cooperative you belong to:
 Beltrami Electric Clearwater-Polk Electric
 Itasca-Maitrap Electric Paul Bunyan Communications
 PNM Electric Red River Valley Electric
 Roseau Electric Wild Rice Electric

All entries must be postmarked by May 22, 2015

Winners will be announced May 29

5 WAYS TO SPRING INTO



energy efficiency



Spring is a perfect time of year to make your home more energy efficient. Here are five quick tips that will save both energy and money. To learn about additional ways to cut your energy bill this spring, visit TogetherWeSave.com, or contact an energy expert at Beltrami Electric Cooperative at 218-444-2540.

1 Seal the cracks and gaps around your home.

Spring may be the right time to put away those storm windows, but it is also a good time to add weatherstripping and caulking around leaky window panes. TogetherWeSave.com shows how easy it is to use a caulking gun to seal up leaks around your house around doors, vents, ductwork and windows. A typical member of Beltrami Electric Cooperative can save more than \$200 annually.

2

Change filters regularly.

Furnace and air conditioner filters need to be changed monthly and this can really help lower monthly energy bills. Dirty filters can restrict airflow and reduce the overall efficiency of your cooling system and make it work even harder on hot summer days.

3

Clean the refrigerator inside and out.

Now is a good time to not only throw out the leftover fruit cake from the holidays, but also to check the temperature settings on your refrigerator. Ideally, a refrigerator's temperature should be between 37 and 40 degrees for maximum operating efficiency. When it's time to replace that old refrigerator, be sure to buy an ENERGY STAR® rated appliance. Energy-efficient appliances can save Beltrami Electric Cooperative members as much as \$100 a year based on calculations from the TogetherWeSave.com website.

4

Think sun block.

TogetherWeSave.com demonstrates that by pulling the shades on your windows this spring and summer, you could save about \$35 a year. Your local hardware or do-it-yourself stores has lots of inexpensive window coverings. Best of all, by blocking the sun during those warm summer months, your house will stay more cool and comfortable.

5

Enjoy the spring breezes.

Use a clothesline throughout the warmer months to let the sun and breeze dry clothes naturally. This will reduce energy bills, and add a genuine clean scent to your family's laundry.

Ayla Winskowski joins Beltrami Electric

Ayla Winskowski, daughter of Greg & Deni Winskowski, recently joined Beltrami Electric in the customer service department as a cashier/receptionist. Ayla is a 2014 graduate of Bemidji State University. She enjoys fishing, hunting and spending time with her family and friends. We are pleased to welcome her as the newest addition to our customer service team.



**Follow us
on Twitter!**

Click on the "Connect with BEC on Twitter" link at
www.beltramielctric.com



**Check us out
on Facebook!**

Click on the "Connect with BEC on Facebook" link at
www.beltramielctric.com

2015 power plant tours

June 11-12 and Sept. 10-11



Consider signing up for one of the two-day power plant tours offered by Beltrami Electric Cooperative. Tours are scheduled this year for June 11-12 and Sept. 10-11. As a Beltrami Electric member, you can attend one of these trips for only \$40 per person! These tours include motor coach travel, meals and lodging at the Baymont Inn & Suites in Mandan, N.D., where you will be provided a banquet dinner. The tour, which will stop at various locations in eastern and central North Dakota, includes a visit to Minnkota's offices in Grand Forks and a tour of the lignite-fueled Milton R. Young Station near the town of Center, N.D. The June tour will include a stop at Garrison Dam. The September tour will include a stop at the Ashtabula Wind Energy Center. Members who have not been on this trip are encouraged to go.



Power Plant Tour Registration Form

Names of Participants

Address

Telephone Number _____

June 11-12 _____ Sept. 10-11 _____

Number Attending _____

Number of Rooms 1 _____ 2 _____

MAIL TO: Beltrami Electric Cooperative, PO Box 488, Bemidji, MN 56619-0488

Terry Diffley receives Red Lantern Award



Terry Diffley, Beltrami Electric's representative on Minnkota Power's board of directors, was presented with the Red Lantern Award, recognizing his 10 years of service as a cooperative board member.

Beltrami Electric chooses Andrea Bunich for 2015 Youth Tour in Washington, D.C.



Beltrami Electric has selected Bemidji High School's Andrea Bunich as the cooperative's representative for the 2015 Electric Cooperative Youth Tour, where she will join hundreds of high school students representing their cooperatives on an all-expense-paid trip to Washington, D.C., June 13-18, 2015. This trip is a part of an annual Youth Tour sponsored by the National Rural Electric Cooperative Association (NRECA), the Minnesota Rural Electric Association (MREA) and Beltrami Electric Cooperative.

Ms. Bunich is very active in her school. Not only is she a member of the National Honor Society and the Math League, she also works with the high school's stage crew. She was a place winner at the Northern Minnesota Mathematics contest in 2013. She volunteers with the Hubbard County Homemakers, has participated in Sanford Bemidji Medical Center's Annual Walk to Remember and is active with her church youth group. In college, she plans to pursue a degree in Pharmacy.

The tour includes visits to several historic monuments and museums. Representatives will also spend a day on "The Hill" meeting with legislators and witnessing the day-to-day operations of the federal legislature. Andrea was selected based on her strong educational background and community involvements, qualities that Beltrami Electric Cooperative believes are important in our future community leaders. Andrea is the daughter of Christopher and Jennifer Bunich of Bemidji, Minn.

MEMORIAL DAY

The Beltrami Electric Cooperative offices will be closed on Monday, May 25, in observance of Memorial Day. Please remember those who sacrificed their lives

★ ★ ★ ★ for our freedom. ★ ★ ★ ★

Northern Lights

CLASSIFIEDS

For Sale:

1983 Lund Mr Pike 16' with 1986 70 hp Johnson. Has console, MinnKota trolling motor, Eagle depth finder and live well, \$3,500, 766-4082.

2008 Keystone Hornet LTD BL, 27 ft., no slide outs, sleeps 8, queen master bed, bathroom rarely used, built-in surround sound system, microwave, stove top and oven, AC/heat/fan, tons of storage, \$12,500, call 224-3247.

Interior door, 6 panel pine, 36 x 80, left in-swing, pre-hung, nice condition, includes lockset, \$60, 987-2308.

Mercury Quicksilver stainless steel prop, 40-70 hp, 13-tooth spline, new hub, not used, new, \$300 mint condition, asking \$100, 759-1956.

Single hospital bed and mattress, electric operation w/side rail, exc. cond. \$300, vintage (black) Arctic Cat snowmobile suits sizes 3 and 4 (adult), great shape \$15 each, 766-3436 or 586-2325, leave a message and phone number.

Two bedroom mobile home 14x60 located in Westwood Acres Mobile Home Park in Bemidji, \$7,500, 760-9415 to view this home.

2013 Chevy Impala LS, 4-door, 16,400 miles, excellent condition at \$13,000, 444-8032.

Trailers: (2) two-wheel utility trailers, boat trailer and 4'x8' enclosed all steel trailer, 854-7444 for details.

STX38 John Deere lawn mower for parts, new deck, 333-8830.

Small steel lift, \$150/obo, 701-213-7363.

Amana 23.7 cu.ft side-by-side white refrigerator/freezer with through-the-door ice service, however, ice cube maker does not work, \$150, 547-2240 (Walker).

Sears X-Cargo car top carrier, \$50/obo, 243-2528 and talk to Bill or Tom.

1999 21' Ameri-Lite travel trailer bumper-pull, stove, refrigerator, furnace, AC, full bath, sleeps four, \$4,000, 243-2857.

Two brown reclining love seats, exc. cond. \$200 each, after 5 p.m., 444-8312.

New Pocket Bike, black and white, 4-stroke engine \$300/obo, 224-3344.

Chevrolet 350 turbo hydramatic transmission, 4-wheel drive rebuilt, low mileage, \$325/obo, call or leave message, 308-4028.

1987 16-ft. Crestliner Angler SS with live well, depth finder, bow mount trolling motor, boat is on a yacht club trailer, 1997 Johnson 50 hp motor, \$3,500/obo, 586-2292.

2002 15' Old Town sport boat with 4 hp 4-stroke 2001 Yamaha outboard motor (serviced regularly), both used 3 times, excellent condition, \$1,500 or willing to sell separately for \$750 each, Gary at 243-2129.

Old pull-type road grader with 6'-0 blade, fair condition, good for maintaining driveway, \$225, 243-2316.

1½ squares of steel siding, wood grain, tan in color, \$100, Walmart TracFone, never activated \$10, 66" ATV plow, 218-987-2932.

2000 Toyota Tundra SR5 access cab 4.7 V8

4WD, Sunfire Red Pearl, low 119k miles, new timing belt, water pump, power steering assembly, front brakes, exhaust system, very good condition, \$10,900/obo, evenings 586-2541.

Rifle, 270 caliber, Remington 700 ADL, with case, sling and 3x9 scope, 368-2261.

Homecrest 8-piece patio furniture set, 1 oval (43x63) glass top dining table with umbrella hole, 1 chaise lounge, 6 padded rocker swivel chairs, this set has all steel frames and is in excellent condition, frame is white diamond in color, color photos upon request, \$695, 766-3059.

Satellite receiver with adjustable 40-ft. pole and control box, railroad ties, children and adult rain boots, 2 interior doors 28x80, interior glider window, ironing board, dishes, 8-pc. Mirro Cook-ware, like new, full size bed sheet set, 335-8945.

18-ft. Madsen Pontoon w/25 hp Evinrude outboard motor, pontoon and motor were completely rebuilt within the past year, \$1,150/obo, 224-2836.

9.6V Makita drill and sawzall \$25, round oak table \$25, tan love seat \$30, 2 kid bikes \$5 each, 2 vintage 3-speed bikes \$10 each, formica top table rectangle w/ leaf \$10, oak mantel 5ft. \$15, charcoal/gas grills \$10/\$15, Herend figurine \$50, Amager girl figurine \$50, 751-9311/368-9034.

Black ash rough sawed lumber, 1x6x8ft. \$3/each 1x8x8ft. \$5/each, 586-2426.

Women's golf clubs, Callaway Big Bertha driver; Pro Staff 1,3,5,7 fairway woods and sand wedge, 368-5477 or 243-3443.

Celotex Thermax sheathing for use as a heat shield and ½" wood paneling (mock birch), assorted lengths and widths, Steve 224-2699.

2000 Honda Goldwing, excellent condition, 2,120 miles. \$8,000, 835-7484.

Bunk bed system: desk, 6 drawers, and closet built in, lower drawer trundle bed can be used as additional drawer if mattress is removed and you only have use for one bunk, oak finish in great condition, original RP \$1,100, asking \$500, will include current mattresses as bonus, 987-2890.

2001 StarCraft pontoon 24', 125 hp, 2-stroke oil-injected Mercury, bunk style tandem axle Karavan trailer, new graphics, new upholstery and new bunks, \$10,500, 766-9220.

Several AC motors: from 1/16 hp to 2 hp, for fans, pumps, etc. 4-barrel Carb from a 307 olds \$30, 20-30 gal fuel or oil barrel made from pipeline pipe w/ drain plug, fill cap, fuel level hose, and 3/4" valve for gravity drain or pump \$40, 5 old hubcaps \$20 (1 Ford, 1 Olds, 3?), 760-4361.

17' touring Dagger Apostle kayak with accessories, excellent condition, \$750, 586-2612.

DAKA wood stove, \$300, 444-5783.

Quick Meal wood cook stove, mfg. 1934, almond in color with black trim, includes a backsplash with shelf, used very little, very, very clean in excellent 99% condition, \$1,995, 751-7206.

Saris two-bike carrier, hitch type, like new, \$150, 586-2612.

300-gallon fuel tank and stand, painted green \$200, 444-4796.

Oak drop leaf coffee table \$150, excellent shape, 6-ft. brass floor lamp (5 lights) \$50, 766-8781.

40' dock, \$200, 6" logs (flat on 3 sides), best offer, front load washer, \$200, dryer \$100, (nice set), 4 pieces of floating dock, \$100, 16' aluminum boat w/ trailer, \$400, unique kitchen table w/leaf and 4 chairs, \$350, refrigerator, \$75, elliptical, clean '96 Mustang V8, 90K (never driven in winter), 340-9010.

Homemade square, block, and star quilts: twin, full, queen, king, portable and cabinet sewing machines, Touch & Sew singers, \$20, others \$15, work good, desk chair, \$25, refinished oak 5-drawer highboy dresser, sewing rockers, wash stand, 44x44 dining room table, 6 chairs, matching, other misc. chairs, 243-2702.

Propane refrigerator, 15 cu. ft. upright freezer, 4 near new Goodyear Wrangler ST P225 75R16 tires (5 hole rims also), 32" Sony Trinitron flat screen TV, electric lake/irrigation pump, 556-9440.

Old upright piano - needs to be tuned; \$150, 751-5730.

1987 Suzuki LT80 kid's four-wheeler. New battery, runs great, automatic, electric start, good tires, weight max 110 lbs \$650, please call after 5 p.m., 766-9720 or 556-1955/Bruce.

Upright string bass ¼ size w/Mooradian case and carbon fiber bow \$850, Fluke electric ukulele \$150, Wintergreen anoraks unisex S, 3' rain stick, Eurorack 4-track tape recorder, Pentax ZX-30, 368-3349.

1989 Sea Ray 180 open bow, 135 hp Mercury outboard with 1989 EZ Loader trailer, nice boat, rear seats need work, \$4,000/obo, 242-0269.

Loader, to fit any small Ford tractor, 854-7318.

2014 Gulf Breeze 24-ft. travel trailer including hitch and sway bar, like new, used once, sleeps 4, queen bed, A/C, large bathroom, full shower, lots of storage, \$14,777, 444-2102, ask for Mike or leave message.

16-ft. Alumacraft Lunken boat, with Spartan trailer and Yamaha Kodiak 400 with extras, 497-0231.

2000 Aero-Lite 24-ft. 5th-wheel camper, air, awning, slide-out trailer and light hitch for boat, 444-6262.

1987 5'9" Young Chang Grand Piano, black glossy finish, excellent condition, \$5,600, 280-9602.

Woodtek 1 hp dust collector, \$150, 444-8620.

Two single-shot H&R youth 20-gauge with 1 interchangeable 30-30 barrel and spare parts \$200, distressed Wormwood armoire \$150/obo. 854-7354 evenings.

Wanted:

Two 12-inch round clay flower pots and eight 10-inch round clay flower pots, must be in good condition, no cracks or chips and reasonably priced, or will take free, in Laporte or Guthrie area, 224-2895 after 7 p.m.

Rhubarb roots, call 835-7719.

Room dehumidifier, 751-7693.

Blacksmith anvil, 243-2702.

Grader for ATV, log splitter, air compressor, ¾" Cylotex insulation, 987-2932.

Set of weights with bench press; prefer steel weights with bars, 751-5730.

Rear rims for 9N-2N Ford, 854-7318.

Yarn! (An interdenominational ladies group that meets at Trinity Lutheran Church, Laporte, the 1st and 3rd Monday of each month from 1-3 p.m., knit projects that are given to those in need.) We donate items to charitable organizations such as layette sets, lap pads, blankets, sweaters, caps, mittens, scarves, slippers, hand warmers and much more. If you have unused yarn to donate, please call and we will arrange to pick up or meet you. You may even want to join us. Mary at 333-3747.

Classified ads announcement

There will be no classified ads in the June issue of The Northern Lights (2014 Annual Report) due to space constraints. However, ad listings will resume in July with a June 1 submission deadline. Thank you for your understanding.

Classified ads rules

For sale and wanted items only. 50 words or 300 characters, maximum length. No rental, business, service, real estate or personal ads. Ads are published on a first-come, first-serve basis and are free to Beltrami Electric members. Due to space constraints, there is no guarantee your ad will appear. Limited to one "for sale" and one "wanted" ad per issue. Repeat ads are only allowed for three consecutive months. The ad deadline is the first of the month to be included in the next issue. For example, an ad received June 1 would be included in the July issue due out the end of June. An ad received June 2 would be included in the August issue due out the end of July. Ads are preferred to be submitted via the web at www.beltramielctric.com or via email at info@beltramielctric.com, but may be submitted by mail, phone or in person at the cooperative. All telephone numbers are presumed to have a 218 area code unless otherwise noted.

Co-op board of director nominations accepted at district meetings in May

Nominations will be accepted for director positions at district meetings scheduled in May. Beltrami Electric Cooperative is divided into nine districts, each represented by a director. This year, director positions are open for Districts 3, 7 and 9. The top two candidates as determined by popular vote will have their names on the general election ballot in June.

Persons eligible to become or remain a director of the cooperative shall be a member in good standing of the cooperative and receiving electric service at the member's primary residence in the district where nominated. If you have any questions regarding qualifications or responsibilities of board members, please contact Beltrami Electric Cooperative CEO Lynette Nieuwsma at 444-2540.

District 3: Thursday, May 7, 7 p.m.

St. John's Church,
27867 Irvine Ave. NE, Nebish, MN

Jeff Nelson is the incumbent director.

Townships in Beltrami County: West Alaska, East Alaska, Nebish, Durand, Maple Ridge, Roosevelt, Buzzle, Liberty and Turtle Lake

District 9: Monday, May 11, 7 p.m.

Laporte/Lakeport Firehall,
160 County 39 SW, Laporte, MN

Judy Honer is the incumbent director.

Townships in Cass County: Wilkinson (Sections 19 – 36), Otter Tail Peninsula – NW (Sections 19 – 36), Unorganized (T143N R30W), Leech Lake and Shingobee – North

Townships in Hubbard County: Hart Lake (Sections 19 – 36), Lakeport, Hendrickson and Steamboat River

District 7: Tuesday, May 12, 7 p.m.

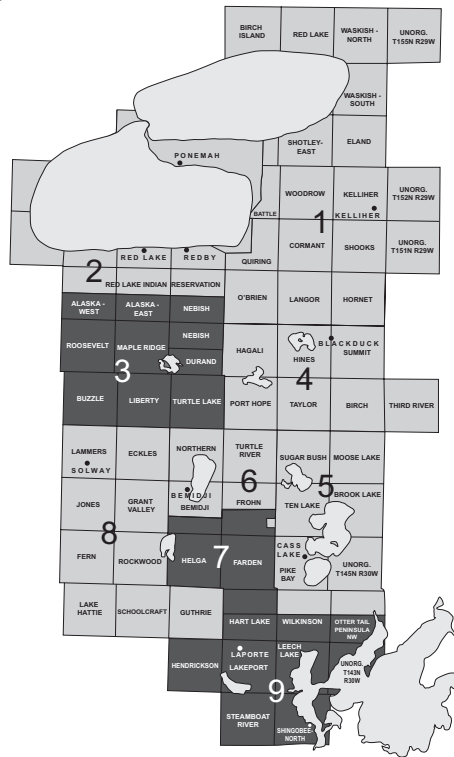
Nary Community Hall, Helga Township,
25895 County Road 9, Bemidji, MN

John Lund is the incumbent director.

Townships in Beltrami County: Bemidji (Sections 25 - 36), Frohn (Sections 19 – 36, except 25)

Townships in Hubbard County: Farden, Helga and Hart Lake (Sections 1 – 18)

District meetings are held each year in accordance with your cooperative's bylaws presenting the opportunity to place names on the ballot for director positions. The meetings also serve as a prelude to the upcoming annual meeting/75th anniversary celebration Wednesday, June 24, at Beltrami Electric Cooperative headquarters.



Beltrami Electric's board of directors conducted its monthly meeting Wednesday, March 25, 2015. All directors were present except Bob Wallner, who was excused. Also present were General Manager Lynette Nieuwsma, Director of Finance and Member Services Sid Sletten and Executive Secretary Kay Olson.

The following reports were given:

- The CEO made her monthly report, including discussion on February financials. She also discussed research on new automated meter infrastructure, wholesale accounts and energy policy legislation.
- Sid Sletten gave the financial and statistical report for February. He also reviewed the work order inventories and special equipment.
- Sam Mason discussed the Operation Round Up program.
- Arlene Hogquist gave an update on the service improvement team progress.
- Brian Stavenger of Eide Bailly, LLP presented the audit report.
- A delegate to Northern Safety & Security was discussed.
- The CEO and Rick Coe reported on the NRECA annual meeting.
- Terry Diffley reported on the last Minnkota board meeting.

The following actions were taken:

- Approved moving forward with the Operation Round Up program.
- Accepted the annual audit report as presented.
- Appointed Sam Mason as the delegate to Northern Safety & Security.


The next board meeting will be April 29, 2015, at 9 a.m.

We are looking for you!

Beltrami Electric is looking for **Barbara A. Ornelas** (Bemidji, Minn). Please call 218-444-2540 if you have any information.



Beltrami Electric Cooperative Inc.

Your Touchstone Energy® Partner 

4111 Technology DR NW
PO Box 488
Bemidji, MN 56619-0488
218-444-2540 • 800-955-6083
www.beltramielctric.com

BELTRAMI ELECTRIC MULTIVENDOR INDOOR GARAGE SALE



to benefit the United Way

\$1 entrance fee (12 & under are free)

Saturday, May 2, 2015

8 a.m. to 2:30 p.m. at Beltrami Electric (in the garage)
4111 Technology Dr. NW, Bemidji (near Paul Bunyan Communications)

- Access to 90 booths and the comfort of indoor shopping!
- Huge variety of NEW and USED merchandise!
- All fees (rent, entrance, food) go to the United Way!



Volunteer for Project GreenTouch

Invite your family and friends!

Saturday, May 2, 10 a.m. to 2 p.m., Lake Bemidji State Park
Tools, equipment, beverages and grilled lunch provided

For the 16th year, Beltrami Electric Cooperative and other Touchstone Energy® cooperatives throughout Minnesota have again joined together to spruce up our state parks through a program called GreenTouch.

You're invited to volunteer your time to plant trees, clean up trails, rake leaves and complete other general projects, all to help spruce up Lake Bemidji State Park for the 2015 season!

Come join us! No park sticker will be needed that day for volunteers. For more information visit www.beltramielctric.com or if you would like to volunteer, contact Angela at 444-3689 or alyseng@beltramielctric.com.

