

NORTHERN

L I G H T S

November 2016

OPERATION ROUND UP®



Beltrami Electric Cooperative Inc.

® Your Touchstone Energy® Cooperative 

awards \$39,391 to community programs



Seated: James Hess, Bemidji Area Schools; Brandon Mustful, Great River Rescue; Jim and Karen Corcoran, Friends of the Big Bog State Park; Joan Moorhead, Laporte School; Ginny Kurtzweg, Bemidji Early Childhood Initiative; Tammy Rogers, Jacob Rogers, Civil Air Patrol/Northland Composite Squadron

Standing: Tony Petrie, Beltrami County Sheriff's Office K9; Paul Yule, Susan Hazard, Pet Fixers; Darlene Morgenstern-Loch, Lutheran Social Services Senior Nutrition; Diane Huberty, Red Lake High School; Kelly Hanks, Bemidji Public Library; Sarah Markert, Community Resource Connections; Ray Ritchie, Confidence Learning Center; Lavon Weidenborner, Northome School PTO; Karen Holstein Bedeau, Northwoods Caregivers; Mary Knox-Johnson, Northern Artist Association/Gallery North; Barbara Pavek, Society of St. Vincent de Paul; Kristine Cannon, Bemidji Community Theater; Larry Ellingson, Adult Day Services; Jean Christensen, Minnesota Thrive Initiative; Kim Williams, Show Choirs of Bemidji; Carlyne and Rich Raymond, Hope Lutheran Church; Jack Judkins, Bemidji Community Food Shelf; Beltrami Electric Cooperative Trust Board Members Michelle Sand and Sharon Lembke



Thank you Beltrami Electric Cooperative members! See Operation Round Up details – page 3

Understanding right-of-way (ROW) clearing – page 5

Installing new meters to help serve you better – page 7

NORTHERN L I G H T S

Northern Lights (USPS 016488), Vol. 63, No. 11 is published monthly by Beltrami Electric Cooperative Inc., 4111 Technology Drive N.W., Bemidji, Minnesota 56619-0488. Subscription rate \$5. Periodicals postage paid at Bemidji, MN 56601.

Postmaster: Please send address corrections to Beltrami Electric Cooperative Inc., P.O. Box 488, Bemidji, Minnesota 56619-0488.

Office Hours: 8 a.m. to 4:30 p.m.
Monday – Friday

Member Service: 218-444-2540
or 1-800-955-6083

www.beltramielectric.com

Board of Directors

President	Rick Coe, DISTRICT 6 (Minnkota Director)
Vice President	John Lund, DISTRICT 7
Secretary	Murl Nord, DISTRICT 1 (Square Butte Director)
Treasurer	Judy Honer, DISTRICT 9
Directors:	Lea Perkins, DISTRICT 2; Charles Parson, DISTRICT 3; Jerry Larson Sr., DISTRICT 4; Robert Wallner, DISTRICT 5; Sue Kringen, DISTRICT 8
CEO	Jared Echternach
Editor	Angela Lyseng

This institution is an equal opportunity provider and employer.

Minnesota State Electrical Inspectors

Beltrami and Clearwater Counties

Davis Smid

507-227-2772 - mntristate@gmail.com

Cass and Hubbard Counties

Steve Schauland

218-652-2213 or fax 218-333-0451

These are the inspectors covering the area served by Beltrami Electric. They can be reached by phone Monday through Friday between 7 and 8:30 a.m. or by fax or email as indicated.

Gopher State One Call

1-800-252-1166 or 811

www.gopherstateonecall.org

Anyone who plans to dig is required by law to notify the state of their intentions at least 48 hours in advance.

All digging requires the 48-hour notification so that buried telephone line, television cable, pipelines, utility electrical lines, municipal water and sewer lines can be located to ensure that none will be severed or damaged.

ON THE COVER: Recipients representing 28 local projects and programs received grants from Operation Round Up in October.



Giving back and giving thanks, energy and politics and more

Jared Echternach, *CEO*

Giving back and giving thanks

Last month I wrote about the seven cooperative principles with one of these being Concern for Community.

7

CONCERN FOR COMMUNITY

While focusing on member needs, cooperatives work for the sustainable development of their communities through policies accepted by their members.



Cooperatives have given back to their communities for decades, and as we give thanks this month, I'd like to thank members who are participating in the Operation Round Up program. This is a great program in which members elect to round up their electric bill each month with the additional change placed into the Operation Round Up Trust. I'm proud to announce the Trust Board met Oct. 12 to make its first distribution of nearly \$40,000 to community organizations. I'd like to thank the Trust Board for their stewardship of this great organization, and more importantly, to those who volunteer in our communities to make these worthwhile projects happen. A list of organizations and the grants received are located in this issue of *Northern Lights*. I encourage nonprofit community organizations to apply for this program. The next application deadline is Dec. 31, 2016.

Energy and politics

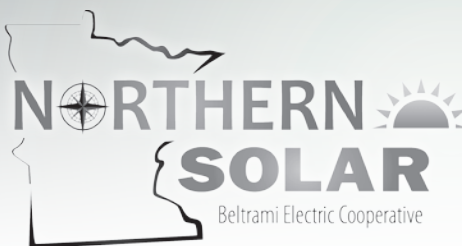
As you head to the polls this month, please take some time to check your candidate's position on energy issues. The last thing I will do is tell you who to vote for, but I will say this ... energy has become a key issue in elections at both the state and federal levels and will continue to play a pivotal role in our economy. Legislative and regulatory decisions made over the next year or two will have lasting effects on energy policy and ultimately the price we pay at the pump and on our electric bill.

Winter is approaching – time to check your heating system

As much as we might want to delay it, winter is fast approaching. Now is a good time to check your heating system to make sure it's operating in top form. Whether you are a do-it-yourselfer or you hire a contractor to inspect your system, the time and money is well spent to avoid a catastrophe during our long, cold winter.

Giving thanks

Finally, I'd like to thank you for being a member and I wish everyone a safe and joyous Thanksgiving. I hope you are able to enjoy the holiday with family and friends.



For more information, contact the co-op at 800-955-6083 or visit www.beltramielectric.com

Beltrami Electric Cooperative plans to build an 80-kW community solar array at co-op headquarters.

Community solar provides interested members an opportunity to purchase locally-produced, solar energy.

Contact Beltrami Electric Co-op to sign up today and become a part of the Northern Solar Community!

**Participation is limited!
Call today!**

Operation Round Up® awards \$39,391 to community programs



Thanks to the generosity of our members, the Beltrami Electric Cooperative Trust Board for Operation Round Up recently awarded 28 grants to area nonprofit and community organizations totaling \$39,391. Grant applications were received representing more than \$174,000 in local community projects.

Operation Round Up is a charitable program unique to electric cooperatives and is designed to give members a means of working together to use their small change to make a big impact in their local communities. The average amount a member will contribute is approximately 50 cents/month or \$6 per year. Donations are tax deductible and members will receive an annual summary of their contributions on their January billing statement.

As of today, more than 80 percent of Beltrami Electric Cooperative members participate in Operation Round Up. Their participation supports worthy programs and projects in our local communities.

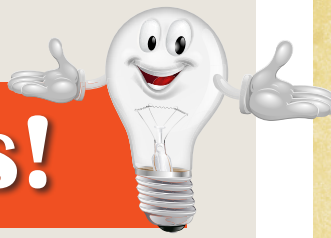
The Trust Board, made up of five volunteers from our community, meets quarterly to review applications for grants and disburse funds. The funding guidelines are as follows: Community Service, Economic Development, Education & Youth and Environment. The next quarterly application deadline is Dec. 31, 2016. Grant applications are available at the BEC office or by visiting our website at www.beltramielectric.com.

The following organizations have been awarded Operation Round Up grants:

ORGANIZATION	PROGRAM	GRANT
Adult Day Services	Assist in purchase of van to transport elderly residents to and from Adult Day Services	\$4,000
Beltrami County Sheriff's Office K9	Assist with purchase of second K9 and equipment	\$5,500
Bemidji Area Schools	One District - One Book program	\$1,000
Bemidji Community Food Shelf	Deep Winter Greenhouse	\$5,000
Bemidji Community Theater	Mary Poppins Spelling Bee	\$ 500
Bemidji Early Childhood Initiative	"MAP" (Movement and Play)	\$1,000
Bemidji Public Library	1,000 Books Before Kindergarten	\$ 350
Big Bog State Park/Friends of the Park	New wheelchair for park guests	\$ 550
Civil Air Patrol- Northland Composite Squadron	CPR/First Aid training	\$ 400
Civil Air Patrol- Northland Composite Squadron	Drug Demand Reduction presentation supplies	\$ 712
Civil Air Patrol- Northland Composite Squadron	Rocket Shoot - Aerospace education	\$ 149
Community Resource Connections (CRC)	Tummy Time Blanket Project	\$2,000
Confidence Learning Center (CLC)	Camp Confidence - Outdoor Education & Recreation for Individuals with Disabilities	\$ 440
Great River Rescue	Cat Area Enrichment - cat portals	\$ 500
Hope Lutheran Church	Christmas Food Boxes for families in need	\$1,000
Laporte School	Character Challenge Course activities	\$1,500
Lutheran Social Services	Weather-Emergency Meals for Beltrami County Seniors	\$1,440
Minnesota Finlandia Community Health Sports	Healthy Lifestyles for Youth/Adults- Sunday Ski School	\$ 750
Minnesota Thrive Initiative	Thrive Professional Education Series	\$ 600
Northern Artist Association/Gallery North	Warm Your Heart With A Little Art	\$ 750
Northome School PTO	Easter Egg Hunt	\$ 500
Northwoods Caregivers	Conference on Alzheimers/Dementia & Native American People	\$1,000
Pet Fixers-Spay Neuter Assistance Program	Low Cost/Low Income Spay & Neuter Assistance	\$1,000
Red Lake High School	Library Books	\$ 500
Red Lake Nation	Oshki-Bawaaajigan-Young Dreams Dance Troupe	\$1,000
Shield 616 Officer Support	Level IV Ballistic armor for officers	\$5,500
Show Choirs of Bemidji	Bemidji's All Show Choir Day	\$ 750
Society of St. Vincent de Paul	Walk for the Poor	\$1,000

Install an electric heating system or new electric water heater and take advantage of

rebate options!



\$20/kW rebate on new off-peak electric heating equipment *(valid through Dec. 31, 2016)*

- Must be the primary heating source
- Must be new equipment but can be used in existing off-peak system
- Must be on off-peak with qualified backup heating system
- Must be hard-wired and equipped with off-peak meter



Energy efficiency rebates

(See rebate forms for applicable rating criteria)

- Many residential and business rebates available for qualifying energy-efficient electric heating/cooling products like ground-source heat pumps, air-source heat pumps, furnace with an ECM blower and more!
- Energy-efficiency rating criteria applies. See rebate forms for details.
- Rebates can be combined for additional savings!



Electric water heater rebates

(valid through Dec. 31, 2016)

- Must be a **NEW** purchased electric water heater installed for a BEC member
- Must be connected to off-peak to qualify for rebate
- Must be at least 240 volts and hard wired
- Tankless and Hybrid heat pump water heaters **DO NOT QUALIFY**
- Multi-family dwellings **DO NOT QUALIFY** for rebate, however, exceptions will be considered on case-by-case basis



Some restrictions/limitations apply.

Contact our energy services department for details.

Reliable off-peak backup

system is a must!

Electric off-peak heating systems must be capable of 500 hours or more of interruption each heating season, although this year we are expecting less than that. To realize the full benefits of the load management program, it is very important that members work with a qualified heating contractor to ensure that they will have an automatic, adequate and well-maintained backup heating system.

The electric off-peak heating program continues to provide a great value to members today, just as it did when it began in the late 1970s. The winter heating season is here and Beltrami Electric is ready to assist our members with their electric heating options.

ATTENTION Members with dual fuel off-peak equipment

Remember to check your backup propane or fuel oil tank levels now and periodically during the winter. It is important to always have adequate fuel reserves so your backup heating system runs during times when off-peak electric heating systems are being controlled. Members can find when their off-peak electric heating systems are being controlled three ways:

1. Go to www.beltramielc.com and click on the orange Load Management Status button on our home page
2. Call the cooperative at 444-2540 or 800-955-6083
3. Check out PBTv channel 301

Understanding right-of-way (ROW) clearing

Beltrami Electric has more than 3,449 miles of overhead and underground power lines that are operated and maintained by the cooperative. We are dedicated to providing our members with safe and reliable electric service. Trees growing around power lines can cause electric faults and outages and can create a safety hazard for our crews and the general public. Beltrami Electric has adopted a 3-step right-of-way corridor maintenance cycle in an effort to ensure safer, more reliable electric service.

What is the right-of-way (ROW) corridor for an electric line?

A right-of-way (ROW) corridor for an electric line is a strip of land that an electric utility uses to construct, maintain, repair or replace an overhead or underground power line. The corridor allows the utility to provide clearance from trees, buildings and other structures that could interfere with the line installation, maintenance and operation. Beltrami Electric Cooperative requires a 30-foot clearance on each side of the poles, and a 15-foot minimum on each side of the poles, when approaching a residence.

Beltrami Electric's 3-step right-of-way corridor maintenance cycle

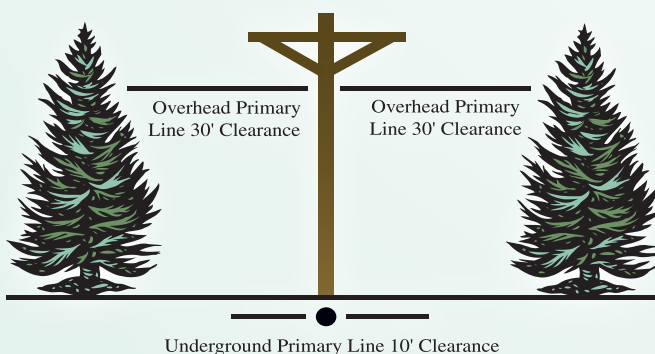
Step 1: Trees and brush removed from the corridor.

Step 2: Application of an EPA approved herbicide to control re-sprouting of trees and brush during the upcoming mid to late summer season.

Step 3: A review of any areas that may have been missed in prior herbicide treatments will follow 1-2 years after step 2. Subsequent maintenance cycles follow in 8-10 year increments, which will be less intensive due to the decreased amount of trees and brush.

SAFETY is the number one reason for cutting down trees around power lines. Electricity always seeks a path to the ground. Conductors of electricity include water, your body, tree branches, metal poles and ladders. When you become part of this path, you may be injured or killed.

SERVICE RELIABILITY, after safety, is a key responsibility of your electric cooperative; providing members with the best possible power quality. One tree on your property coming into direct contact with power lines not only affects your home, but it affects the power quality for hundreds of your neighbors. Proper clearance today prevents inconvenience tomorrow. Clearing lines reduces blinking lights, power surges and enhances power quality, which protects your electronics and appliances that could cost you thousands of dollars to repair or replace.



Why is access to lines important?

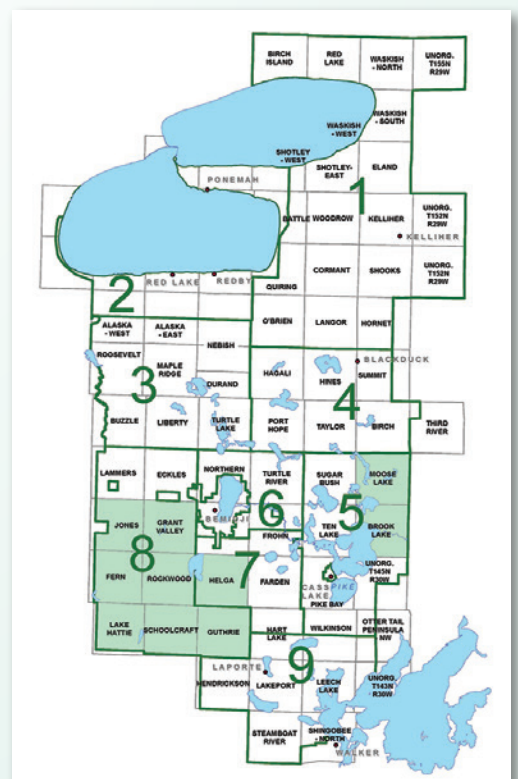
Imagine that a large storm with 80 mph straight-line winds has just swept through our service area, knocking out power to thousands of members. As our crews are dispatched to repair broken poles and downed lines, it's getting dark and conditions are very wet. In order to restore outages in the shortest amount of time, our linemen need to be able to drive our large trucks into the right-of-way. If there are obstructions such as trees or heavy brush, our crews are delayed in restoring electricity, thus leaving our members in the dark for an extended period of time. Please remember this when considering the reasons why it is important for your cooperative to have an aggressive tree-clearing program. We do it to keep your lights on, with limited interruption.

Please identify and notify Beltrami Electric Cooperative of possible hazards and/or sensitive items within the overhead corridor. Following are a few common examples:

- Septic systems should be identified (fenced, signed, etc.) to avoid damage when crews are on-site to clear trees or maintain overhead lines.
- Survey markers that are above-ground, need to be identified to ensure they are not destroyed.
- Wells and water lines.
- Personal property, such as vehicles and trailers, need to be moved from the corridor during the tree-clearing process.

With your help, we can make sure that our employees have ample access to Cooperative lines in case of needed repair. This will help ensure their safety and also make for shorter outage restoration times for our members.

Beltrami Electric will be removing trees and brush within the overhead corridor during the upcoming year in the townships highlighted in green.



Northern Lights

CLASSIFIEDS

Classified ads rules

- Ads may be submitted via our website at www.beltramelectric.com (preferred).
- All ads must be 50 words or less and typed or printed clearly.
- Members may only submit one **For Sale** and one **Wanted** or **Free** ad per issue.
- No real estate, rental, personal or commercial ads will be accepted.
- Ads are published at no charge as space permits on a first-received, first-printed basis, **with no guarantee your ad will appear.**
- Ads are only allowed to be repeated for **three consecutive months** and must be resubmitted to run additional months.
- Ads are due by the first of the month prior to publication of the next issue.
 - Ads submitted by Nov. 1 – will be published in December issue
 - Ads submitted by Dec. 1 – will be published in January issue
- Editor reserves the right to edit or reject any ad.
- All telephone numbers are presumed to have a (218) area code unless otherwise noted.
- Include name and Beltrami Electric account number on all submissions.
- Mail ads to: Beltrami Electric Cooperative, P.O. BOX 488, Bemidji, MN 56619.

For Sale:

Brand new, never used DAKA 521FB wood burning furnace \$800. 556-3900.

Browning automatic Mark II, 300 Winchester with scope. \$1,400. Call 224-3278. If no answer, leave message.

Counter height dinette set. Dark oak veneer with 4 padded chairs. Good condition. \$75. Also, external roof TV antenna with tripod. Very good condition. \$50. 755-9866.

Browning BLR 284, with Leopold 3x9x40 VXII scope, and 5 boxes of shells. \$800. Call or text 368-6284.

Shore master 2596 alum cantilever boatlift. 96" W x 118" L. 2,500 lbs. manual winch rated 5,000 lbs. Good shape with newer cables/pulleys, adjustable legs/pads, good front and rear cradles. Weighs 264 lbs. This lift has been well cared for and maintained. Covered with plastic over winter. No canopy/cover. \$999. Big Lake area. 651-274-3574.

Used room dehumidifier. 751-7693.

2002 Mazda B3000 4x4 extended cab pickup, V-6 5-speed, good tires, alum wheels, 137,000 miles, bed-liner, in good condition. \$4,200 firm. 766-6777.

5-pc bedroom suite: dresser, mirror, 5-drawer chest, headboard, nightstand, Mediterranean style dark wood \$400/obo, candlestick table

lamp w/shade \$30/obo, aluminum folding cot w/foam mattress \$25/obo, table lamps cream ceramic base w/shades \$60 pair/obo, walker w/o wheels \$5. Call 612-618-0422.

Older Weber 3-burner grill, works well, comes with extra grate. Propane tank not included. \$25. 835-7484.

Stihl chain saw 028 3 hp w/16" bar/chain, well kept. \$130. Metal deer stand, \$35. HeatMate kerosene heater with new wick still in pkg. \$50. Coleman tent heater, \$15. 3 hp Eskimo ice auger with 8" and 10" blades, one pull starting, \$130. Small Sentry safe 12"x12"x6", NIB, \$45. 224-2394.

3-piece Coaster dinette set, table is 36" round and drops down to 21" with 2 chairs, natural oak finish, excellent condition, \$125; also a lift chair only 1 year old, taupe color in faux suede, \$375, was \$700 new. 243-2312.

Nordic Bella 2-person hot tub/therapy spa. Use indoor or outdoor. Fits through standard doorway, comfortable raised seats, multiple jets, LED lighting, 83 x 34 wide x 38 deep. Excellent condition. \$1,500. Call for more information. Joe 821-5012 or Sharon 952-237-2792.

Men's Danner boots, brand new never worn (gor-tex) size 11½, asking \$65. Lady's Thermolite short boots, new never worn, size 5, asking \$20. Call 368-4973.

Duncan Pfiere table (plus 2 leaves), 6 chairs (1 captain and 5 chairs). Table measures 62x40. In good condition. Has protective pads. \$500. Call 333-3747 after 6 p.m.

PSE youth bow 40# peak, 23" draw length. Like new, \$65. True bull release, \$20. McKenzie 3D buck target, used very little, \$70. New in box. American shower and bath wall set. 32x60, \$75. 586-2662.

54" gang type reel mower - can be pulled by a 4-wheeler. 3 reels with 4 additional reels for parts. \$50, 308-1632.

"Elite Billiards" solid oak 4'x8' pool table, wine colored cloth, excellent condition, call for pricing, 224-2836.

Classic Eldorado Cadillac, 2-dr, 98K orig. miles, CD player, pale yellow, better than average condition for 1987, \$3,500. Williams portable room heater, 5,200 Btu, 1,500 watts. Call Mimi at 368-5469 or 497-0177.

Cabela's men's woodland blaze orange parka and bibs with thinsulate and Dry-Plus lining; size 2XL/regular; like new (worn twice). New \$390 for the pair; will sell for \$195. 250-gal. propane tank; purchased 3 years ago. Asking \$275. Call 243-2445 (please leave message if no answer).

Like new: Shop King heavy duty 4.5 inch angle grinder. 6.2 amp motor. \$40. 766-3228 or 647-8514.

Three numbered and signed artists prints done by Jim Kasper. "Autumn Challenge" "October Whittails" and "Pole Creek Encounter." All are professionally framed and matted and in excellent shape. Asking \$130 for each or \$375 for all three. 280-2537.

Delco engine stand, used one semester in auto class \$25, 72" black metal credenza in good shape used as a computer and schoolwork platform, very sturdy \$40. Formica w/wood trim kitchen island top 40' x 72" \$25, make a great top for hobby or craft table. Call Charlie at 444-3849.

Danish plates (B & G, Royal Copenhagen) \$6; oil lamps, 2 sizes, \$10-12. Call 766-7976.

Couch, orange/brown print, dark wood frame. \$75. Chair, \$40, rocking chair \$50, coffee table \$25 (all matching). Call 224-2483.

Maytag electric dryer; \$100. Call and leave message 243-2594.

2001 Dodge 3500 Truck- dually 4wd Laramie SLT, quad-cab, 5.9 turbocharged Cummins, 5-speed, headache rack, winch, diamond plate toolbox, 2 new batteries, 6 new tires. Arizona truck. \$11,000/obo. Call 760-2796.

Wheelchair: 2016 Invacare, new in box, never been used. Foldable, dual axle height adjustment, swing-away footrest with calf support. Must sell. \$100. If not in the house leave a message with your phone number. I will return call promptly. 647-8967.

Shop Smith wood worker's power tool. Super condition. Comes with all related knives and accessories. Photo available by email. \$495/obo. Will deliver to the Bemidji area for free. Call Paul: 507-380-4205.

1999 GMC 1500 Suburban SLE, V8, over-sized gas tank. Exc. cond, runs great, no rust, auto transmission, antilock brakes, cruise, privacy windows, AC/heat, dual air bags, power windows, locks, mirrors, doors and seats. AM/FM/CD/cassette player, class 3 hitch, luggage rack, engine block heater, keyless entry. Excellent tires. 127 K miles. \$8,500/obo. 368-4834.

Department 56 Dickens Village Series. Mint condition. 243-3443 or 368-5477.

Barronett grounder model 250 blood trail, camo hunting blind, 16 lbs, 5 hub design, 59" long, 75" wide, 67" high, storage bag included. Used once. \$100. 444-6165.

2-wheeled rubber tire driving or breaking cart. Well made out of steel. Bathtub-sized hot tub, beige. Call 835-7724, if no answer, leave message.

Emergency food-1½ years' worth. 30-year shelf life, 3 totes as seen on the Jim Baker show. 755-1951.

'02 Chrysler van, runs good, clean interior, \$1,200 or reasonable offer. 751-1009.

Rockwell 10" contractor's table saw, 220V on casters. \$500. 818-6653 or 224-2468.

Rifle dies 338 Fed, 30-06 and 7x57, \$18 ea. Ruger Hawkeye small action wood stock, pillar bedded, \$40. 467-3442.

8-ft of Class A stainless 8" chimney pipe with cap, \$175. Older Franklin fireplace, \$200. Barrel stove, \$50. MTD 21" single stage snowblower with electric start, \$125. 255-5808.

Timberline cast iron fireplace stove, \$500. Lincoln copper pennies, 1959-1982 rolled, sorted and dated. 1909 S VDB penny. 444-2134.

1998 Buick LeSabre, good working condition, \$1,200. Call 333-3594 or 556-6225.

Two 2003 Chevrolet Ventura vans, AWD, A/C, head gasket out on one, transmission out on other. Good for parts. \$500 each/obo. 1971 Bolens 1256 hydrostatic garden tractor w/ mower and snowblower. Kept inside mostly since new. Two Arctic Cat snowmobiles: 1989 Jag 440, liquid-cooled; El Tigre. Running when parked. No title. Good for parts. \$150 each. 444-8304 or 766-0409.

Good 15.5 x 38 tractor tire/tubes, \$100. Like new 215-60R16 Michelin passenger car tire, \$25. International 3pt brush mower, \$300. 586-2990.

Two 14-ft aluminum boats. 1 duck boat, 1 row boat, both in good condition. 1 boat trailer in fair condition. All 3 for \$500. 987-2432, ask for James.

Wanted:

Wood burning stove for small greenhouse. 218-308-4025.

For Recycling: E scrap, pianos, appliances, etc. *Picked up free of charge (may change). Can move heavier items also. Within 75 mile radius of Bemidji. 712-369-3291.

Lightly used brown leather sofa. 766-1758.

Professional office space available for lease

(Beltrami Electric's headquarters)



600-square-foot office suite – reception area with three separate office suites. Second floor location, elevator, meeting room, safe, clean, quiet, low-traffic area of well-maintained professional building. For further details contact Sam Mason, Beltrami Electric Cooperative, 218-444-3623.



mymeter

Track your energy usage on My Meter

We are Looking for you!

Beltrami Electric is looking for **Fraye (Roy) Knight** (Cass Lake, Minn.) and **Wayne G. Rosebear Sr.** (Redby, Minn.). Please call **218-444-2540** if you have any information.

Installing new meters to help serve you better

Beltrami Electric crews recently began implementation of our new metering system. As our existing metering system was installed in the mid-1990s, it has reached its end-of-life. The manufacturer is no longer supporting this old equipment. After a rigorous evaluation of metering systems, we have selected a system that will be capable of two-way communication and offers features such as remote connect, voltage readings, demand readings, blink counts, etc.

This project will occur over two to three years as we migrate to the new system in three phases. BEC will contract with a third party metering company to complete the remaining meter exchanges in 2017-2018. Their vehicles will have signage designating them as a BEC contractor so that our membership will know they are acting on behalf of BEC.

The impact of the installation is minimal. Co-op members can expect to lose power for a few minutes on the day of the installation. You may need to reset electronic devices such as digital clocks. In addition, the next bill will show two meter readings: one from the old meter and one from the new meter. We will not need access to your home or business, nor will you need to be on-site when crews perform this work.

Some additional benefits of the new meters are:

- **Improved Efficiency:** Members won't have to wait for a crew to drive to the location to reconnect, BEC will be able to restore power remotely. Also, we will be able to get a reading right away when a member is transferring out of a location, to calculate a final bill for them more quickly.
- **Improved Member Service:** The new system will allow BEC to offer members more timely information regarding their energy consumption, allowing them to make wise decisions about how they use energy.
- **Improved Reliability:** Having two-way communication with the AMI meters will enhance BEC's outage management system by narrowing the location of outages more quickly.
- **Improved Power Quality:** The AMI system will report variances in voltage and other line conditions that will help BEC maintain a more reliable power distribution system.

These features will help Beltrami Electric Cooperative improve efficiency and service reliability for our members.

Board Meeting Highlights

Beltrami Electric's board of directors conducted its monthly meeting Wednesday, Sept. 28, 2016. A quorum of directors was present.

The following reports were given:

- CEO Echternach gave his monthly report, including updates on Rural Utilities Service, net metering and the new meter system. He also gave an update on Operation Round Up and the 2014-2016 Strategic Plan.
- CEO Echternach presented a Resolution authorizing execution of agreements, permits and licenses for the cooperative by the CEO and Manager of Engineering.
- Sid Sletten gave the financial report for August, including review of work orders.
- Rick Coe reported on Minnesota Rural Electric Association and Minnkota Power Cooperative meetings.
- Murl Nord reported on Square Butte.
- John Lund and CEO Echternach reported on Cooperative Development, LLC.
- The NRECA Region 5 & 6 meeting and education classes were discussed.

The following actions were taken:

- Approved the consent agenda and work order inventories.
- Approved the Resolution as presented.

The next board meeting will be Oct. 31, 2016.

Member privacy Red Flags Rule

As many as nine million Americans have their identities stolen each year. As a result of that startling statistic, the Federal Trade Commission has developed a regulation called the "Red Flags Rule." The Red Flags Rule requires businesses to develop a program to detect, prevent and minimize the damage that could result from identity theft.

The data privacy of our members is important to us, and as a Beltrami Electric member, you may be asked to provide additional information and identification when you make inquiries on your account, such as verifying the last four digits of your social security number.


A member may complete an Authorized Contact Agreement form to allow us to give account information to anyone other than the member. This permits an Authorized Contact to make inquiries on the account to which they are authorized. The Authorized Contact must provide their name, date of birth and the last four digits of their social security number in order to receive account information. While these practices may seem intrusive, please understand that these procedures are in place to protect your member data and prevent the occurrence of identity theft.

Celebrate with savings

Buy energy efficient Christmas lights and decorations

LED Rebate

How to apply:



1. Purchase LED Christmas plug-in (not battery operated) lights and decorations in 2016.
2. Complete this rebate form and submit it to Beltrami Electric Cooperative by Dec. 31, 2016, with a copy of your sales receipt and the packaging showing the number of lights per string. ENERGY STAR® LEDs recommended.
3. Select appropriate rebate in the box below. Rebate cannot exceed 75 percent of cost. Maximum of 5 strings per customer.

Name _____ City/Zip _____

Account # _____ Phone # _____

Address _____

Number of Strings	Rebate per String	Total Rebate
Less than 99 lights	\$ 3	
100-199 lights	\$ 6	
200-299 lights	\$ 9	
Greater than 300 lights	\$12	

Mail to: Beltrami Electric Cooperative • P.O. Box 488 • Bemidji, MN 56619



Beltrami Electric Cooperative Inc.

Your Touchstone Energy® Cooperative 

4111 Technology DR NW
PO Box 488
Bemidji, MN 56619-0488
218-444-2540 • 800-955-6083
www.beltramielectric.com

Co-op Connections

Business Deal of the Month

Pine Ridge Service & Sales

10% discount on labor, purchase a used vehicle and receive two free oil changes



4289 Minnkota Ave. NW • Bemidji, Minn.
218-751-2355 • www.pineridgesales.com

The one card that does it all.



Help us decorate the mitten tree!

Drop off items at Cooperative Headquarters by Dec. 9

With the holiday season approaching fast, it's once again time to decorate Beltrami Electric's annual mitten tree! For the 16th consecutive holiday season, we will be accepting donations of **NEW AND HOMEMADE** mittens, gloves, hats or scarves for distribution to children in the area Head Start programs.

Since the program's inception in 2000, Beltrami Electric has collected and distributed 6,380 items! Last year, our members donated 532 garments.

If you'd like to help keep our area children warm and cozy this winter, please consider joining BEC in collecting these items.

Donations can be delivered to the Beltrami Electric office at 4111 Technology Dr. NW in Bemidji. Donations will be accepted until Friday, Dec. 9 and be distributed very soon after.




Beltrami Electric Cooperative will be closed on

Friday, Nov. 11,

in honor of Veterans Day and on

Thursday, Nov. 24,

as we celebrate Thanksgiving.

Our Honeywell Total Connect® Service allows you to easily control your security, lights, locks, thermostat, video and more!



Call Per Mar today at 218-444-3902 and receive 3 MONTHS FREE MONITORING!*

*3 months free home monitoring with activation of a new security system and minimum 3 year monitoring agreement. Promo code: 3 months. Offer expires 12/31/16.



PER MAR SECURITY SERVICES
Since 1953

permarsecurity.com

Honeywell
Authorized Security Dealer