

NORTHERN

L I G H T S

June 2017

2017 POWER PLANT TOUR

TUESDAY THROUGH THURSDAY, JULY 18-20



We are offering Beltrami Electric members an exceptional summer opportunity that is both fun and educational! This year's tour to Center, N.D., is scheduled for Tuesday through Thursday, July 18-20. It will feature stops at Minnkota Power Cooperative in Grand Forks, N.D., Infinity Wind near Valley City, N.D., and tours of the Milton R. Young Station, BNI Coal mines and the Garrison Dam on the Missouri River and more!

The cost to members for the three day trip is \$100 per person or \$175 per double occupancy, which covers the bus fare, hotel, tours and all meals. Space is limited, so reserve your spot by filling out and returning the registration form on page 7, complete with your check. Members who have not been on this trip in the past are encouraged to go. If you have any questions, please call 800-955-6083 or 218-444-2540.

(REGISTRATION FORM ON PAGE 7) _____



GreenTouch, garage sale and annual meeting recaps – page 3
Keeping you safe during and after summer storms – page 5



**Beltrami Electric
Cooperative Inc.**

® Your Touchstone Energy® Cooperative



NORTHERN

L I G H T S

Northern Lights (USPS 016488), Vol. 64, No. 6 is published monthly by Beltrami Electric Cooperative Inc., 4111 Technology Drive N.W., Bemidji, Minnesota 56619-0488. Subscription rate \$5. Periodicals postage paid at Bemidji, MN 56601.

Postmaster: Please send address corrections to Beltrami Electric Cooperative Inc., P.O. Box 488, Bemidji, Minnesota 56619-0488.

Office Hours: 8 a.m. to 4:30 p.m.
Monday – Friday

Member Service: 218-444-2540
or 1-800-955-6083

www.beltramielcric.com

Board of Directors

President	Rick Coe, DISTRICT 6 (Minnkota Director)
Vice President	John Lund, DISTRICT 7
Secretary	Murl Nord, DISTRICT 1 (Square Butte Director)
Treasurer	Judy Honer, DISTRICT 9
Directors:	Charlie Perkins, DISTRICT 2; Charles Parson, DISTRICT 3; Craig Gaasvig, DISTRICT 4; Robert Wallner, DISTRICT 5; Sue Kringen, DISTRICT 8
CEO	Jared Echternach
Editor	Angela Lyseng

This institution is an equal opportunity provider and employer.

Minnesota State Electrical Inspectors

Beltrami and Clearwater Counties

Davis Smid

507-227-2772 - mntristate@gmail.com

Cass and Hubbard Counties

Steve Schauland

218-652-2213 or fax 218-333-0451

These are the inspectors covering the area served by Beltrami Electric. They can be reached by phone Monday through Friday between 7 and 8:30 a.m. or by fax or email as indicated.

Gopher State One Call

1-800-252-1166 or 811

www.gopherstateonecall.org

Anyone who plans to dig is required by law to notify the state of their intentions at least 48 hours in advance.

All digging requires the 48-hour notification so that buried telephone line, television cable, pipelines, utility electrical lines, municipal water and sewer lines can be located to ensure that none will be severed or damaged.

ON THE COVER: The 2017 power plant tour will take place July 18-20 this year. Space is limited, so register today! See registration form on page 7.



Being prepared for storms, GreenTouch and more

Jared Echternach, CEO

Always be prepared

Summer is almost here, school is out, or soon will be, and families are gearing up for a few months of fun and relaxation. While summer brings much fun and activity to our service area, it can also bring the occasional severe storm. While we take great pride in our service reliability, occasionally severe storms can wreak havoc on your electric distribution system, as we experienced a year ago in the southern portion of our service area.

The major cause of most power outages comes from damage to power lines due to falling trees and branches. We work year-round – through our vegetation management program – to reduce the risk of power lines being damaged by trees, branches or other types of vegetation. We also have made major improvements to your distribution system, which is now 72 percent underground.

Despite our best efforts, during major storms, damage can occur to transmission lines, substations and distribution lines. When this happens, our first priority is to safely restore power to as many members as possible in the shortest amount of time.

We start by mobilizing our line crews and other critical staff. Several years ago we installed an Outage Management System to improve outage reporting, safety and response time. The system has worked well and we continue to look for improvements and enhancements with our new metering system.

When responding to outages, the big problems are handled first – like damage to transmission lines, which serve tens of thousands of people. These problems must be corrected before we can focus on other areas where more localized damage may have occurred.

Our line crews work from the substation out to determine if the problem starts there, or if there could be an issue down the line. Our Outage Management System helps us identify affected areas by using location information tied to the calls received. Next, line crews check the primary service lines that deliver power into neighborhoods and communities. Lastly, line crews inspect tap lines to restore individual outages. If you continue to experience an outage, please call

the co-op so crews have the most up-to-date information about your service location.

While we do our best to avoid power outages, sometimes Mother Nature has other plans. Be sure to check our website and social media on your smartphone for the latest updates during a power outage.

Lastly, as we head into storm season, it's a good idea to be prepared in case of an outage. First and foremost, stay away from downed power lines. Also, keep a flashlight handy around the house and make sure to update your phone numbers with Beltrami Electric. Our Outage Management System can recognize up to three phone numbers tied to your service location when you call to report an outage and this information expedites restoration.

Board reorganizes

Each year following the annual meeting, your board of directors holds its organizational meeting. I'd like to congratulate our board officers on their election: Rick Coe, President; John Lund, Vice President; Murl Nord, Secretary; and Judy Honer, Treasurer. These folks and all of your directors do a wonderful job for your cooperative.

GreenTouch

Thank you to all the local volunteers who attended Project GreenTouch May 6 at Lake Bemidji State Park. This was the 18th year Beltrami Electric members and employees have teamed up to complete several projects, including cleaning up debris in the campgrounds, picking up roadside trash, washing windows and raking leaves. This is a statewide effort by Touchstone Energy Cooperatives that helps our state park system prepare for the summer season.

Indoor garage sale

We had another successful indoor garage sale May 6. This annual fundraiser is in its 11th year and Beltrami Electric employees chipped in to help make it happen again and did a wonderful job. This year we raised \$5,900 for the United Way of Bemidji Area. Thank you to all who supported this project by having a booth, donating some items or shopping at the event.

BELTRAMI ELECTRIC INDOOR GARAGE SALE

RAISES \$5,900

*for the United Way of the
Bemidji Area*

The Beltrami Electric Indoor Garage Sale held Saturday, May 6, raised \$5,900 for the United Way of the Bemidji Area. The 11th annual event, which featured 91 booths, saw almost 1,500 bargain-hunters pay a \$1 entrance fee for access to the sale.

Special thanks go out to the following sponsors: Ross Lewis Signs, Bemidji National Guard Armory, Portable John Rental & Service, Dunn Brothers, Nei Bottling and Raphael's Bakery. In addition, thanks to all the vendors and volunteer workers, including the Northland Composite Squadron of Civil Air Patrol.

Next year's sale is tentatively scheduled for Saturday, May 5, 2018, at the Beltrami Electric Cooperative headquarters. This event is one of the single largest

fundraisers
for the United
Way of the
Bemidji Area.

United Way
of Bemidji Area



77th Annual Meeting Recap

Beltrami Electric Cooperative held its 77th annual meeting on Thursday, April 20, at the Bemidji High School. Around 625 members and guests were able to visit informational booths, receive a complimentary gift bag and enjoy a roast pork/roast turkey dinner prepared by Bemidji High School.

The meeting was opened with the pledge of allegiance, followed by the invocation, offered by board treasurer Judy Honer. Board president Rick Coe introduced Beltrami Electric's delegate for the 2017 Electric Cooperative Youth Tour, Mara Cobb, who will be attending a trip to Washington, D.C., in June. Randy Frisk, Vice President for the Beltrami Electric Cooperative Trust for Operation Round Up, presented on the success the program has seen in our communities during its first year. The meeting featured a financial update from Manager of Finance, Sid Sletten, as well as presentations from Beltrami Electric CEO Jared Echtermach and special guest speaker Robert "Mac" McLennan, president & CEO of Minnkota Power Cooperative.

The election results were as follows: In District 2, Donald (Charlie) Perkins, Sr. ran unopposed and received 1,791 votes. Charlie replaces Lea Perkins, who served as director since 2005, and has reached her term limit. The District 4 race saw Craig Gaasvig elected with 1,118 votes. Gaasvig replaces longtime director Jerry Larson, who served three stints as a director from 1978-84, 1990-2002 and 2011-2017, and did not seek reelection. In District 6, incumbent director Rick Coe ran unopposed and received 1,801 votes. Both Lea Perkins and Jerry Larson were recognized for their dedicated service to the cooperative.

Door prizes were drawn during the program, including several electric tools and small appliances, as well as a \$300 grand prize at the end of the event. Special thanks go out to the following vendors who donated prizes: Bemidji Co-op Association, National Information Solutions Cooperative (NISC), Paul Bunyan Communications, Dakota Supply Group (DSG) and Security Bank USA.

Next year's meeting is tentatively scheduled for Thursday, April 19, 2018, and will once again be held at Bemidji High School.

Lake Bemidji State Park hosts 18th annual Project GreenTouch

A beautiful spring day allowed Beltrami Electric Cooperative members, friends and park staff to help beautify Lake Bemidji State Park on Saturday, May 6, as part of Project GreenTouch. The 18th annual event, presented by Minnesota's Touchstone Energy® Cooperatives, saw volunteers rake leaves, clean up debris in the campgrounds, clean roadside ditches and wash windows all in preparation for the 2017 season.

Statewide, volunteers representing numerous cooperatives volunteered to join together for the coordinated State Park cleanup effort. Over the past 18 years, thousands of people have worked tens of thousands of hours, providing a great service to the parks people enjoy all summer long.

Minnesota's Touchstone Energy Cooperatives participating in Project GreenTouch are part of a group of rural electric cooperatives throughout the state. Touchstone Energy is a co-brand used by cooperatives all over the nation to market what local electric cooperatives stand for: Integrity, Accountability, Community Involvement and Innovation. The state park sponsorship fits well with the Touchstone Energy commitment.



Get more value for your energy dollar



Add comfort and energy efficiency to your home through rebate programs

Make your home more comfortable and energy efficient with help from the trusted energy advisors at Beltrami Electric Cooperative. Great incentives and rebate programs are available to assist you in the purchase and installation of qualifying heating and cooling systems, water heaters, lighting and other appliances. Not sure where to start? Check out the options below to see which rebates you qualify for and the appliances

and equipment that best fit your lifestyle. Contact Beltrami today to learn more about how you can get the most value out of your energy dollar.

Some restrictions apply. Offers may require inspection and are subject to change at any time.



Heating and cooling system rebate checklist

All systems must be on off-peak unless otherwise noted.

Electric plenum heaters

Easily converts your existing fossil fuel furnace into a dual-fuel heating system. You are able to use the most efficient, cost-effective heating source – fossil fuel or electricity – at any time.

Electric Heat rebate: \$20 per kilowatt (kW), maximum of \$600

PowerSavers rebate: \$500 if installed with ENERGY STAR®-rated air-source heat pump. Must modulate to allow ASHP to operate down to 5 degrees F., and be on off-peak.



Electric thermal storage heaters

Draws electricity during off-peak hours when it is cheaper. Heat is stored in specially designed bricks to provide comfort 24 hours a day.

Electric Heat rebate: \$20 per kW, maximum of \$600

Steffes ETS rebate: \$20 per kW, maximum of \$500 (expires Aug. 1, 2017)

PowerSavers rebate: \$500 if installed with ENERGY STAR-rated air-source heat pump. Must modulate to allow ASHP to operate down to 5 degrees F., and be on off-peak.

Beltrami rebate: \$30 per kW of new installed electric thermal storage heating equipment

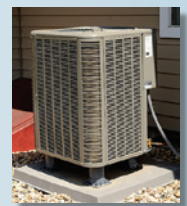


Air-source heat pumps (including mini-split ductless option)

Works just like a central air conditioner in the summer. In the fall and winter, they provide super-efficient supplemental heat.

Electric Heat rebate: \$100 per ton, maximum of \$600 (off-peak optional)

PowerSavers rebate: \$400-500 depending on efficiency ratings

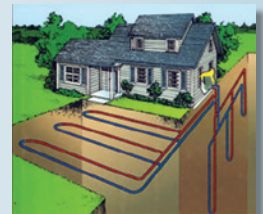


Geothermal heat pumps

Provides the highest efficiency for space heating and cooling available today. The system transfers heat to and from the earth using only small amounts of electricity.

Electric Heat rebate: \$200 per ton, maximum of \$600 (off-peak optional)

PowerSavers rebate: Open loop, \$200 per ton, maximum of \$2,500. Closed loop, \$400 per ton, maximum of \$5,000. Must meet program efficiency requirements.



Underfloor electric heating

A popular off-peak option because the system transfers consistently across the floor to reach people and objects, providing both comfort and efficiency. Applications include electric boiler with hydronic tubing, electric cables or mats.

Electric Heat rebate: \$20 per kW, maximum of \$600



Other electric heating systems

Options include electric baseboard, cove heaters and more.

Electric Heat rebate: \$20 per kW, maximum of \$600

BELTRAMI ELECTRIC IS OFFERING A REBATE ALLOWANCE IN ADDITION TO THE \$600 MAXIMUM FROM THE ELECTRIC HEAT REBATE



Electric water heater rebate checklist

Must be on off-peak

- 100 gallon or greater

Water heater rebate: \$200

PowerSavers rebate: \$150

(80 gallon or greater - rebate not available for under 80 gallon)

Beltrami rebate: \$200

(Must be on daily-cycled storage load control to qualify)

- 56-99 gallon

Water heater rebate: \$150

PowerSavers rebate: \$150

(80 gallon or greater - rebate not available for under 80 gallon)

Beltrami rebate: \$100

(Must be on daily-cycled storage load control to qualify)

- 55 gallon or less

Water heater rebate: \$100

- Bonus Rebates

Add \$100: If new building construction

Add \$250: If converting from natural gas/propane



CFL and LED light bulb rebate checklist

ENERGY STAR®-recommended.

- Replace incandescent bulb with screw-in CFL

PowerSavers rebate: Not to exceed 75% of the purchase price - \$2 max per bulb

- Replace incandescent bulb with screw-in LEDs

PowerSavers rebate: (40-60 watts) Not to exceed 75% of the purchase price - \$4 max per bulb

PowerSavers rebate: (65 watts or greater) Not to exceed 75% of the purchase price - \$8 max per bulb

PowerSavers rebate: Not to exceed 75% of the purchase price - \$8 max per install of fixture or replacement kit

- Install LED outdoor fixtures (dusk-to-dawn operation required)

PowerSavers rebate: (40 watts and under) Not to exceed 75% of the purchase price - \$20 max per fixture

PowerSavers rebate: (greater than 40 watts) Not to exceed 75% of the purchase price - \$40 max per fixture



Appliance rebate checklist

Must be ENERGY STAR®-approved

- Clothes washer

PowerSavers rebate: \$50 per unit

- Clothes dryer

PowerSavers rebate: \$50 per unit

- Refrigerator or freezer

PowerSavers rebate: \$25 per unit

Additional rebate for recycling/disposal of old unit: \$25

Other ways to save on heating and cooling:

- Install a furnace air handler with ECM blower. **PowerSavers rebate: \$100 per unit**
- Tune up your central air conditioner or air-source heat pump. **PowerSavers rebate: \$25 per unit**
- Install a programmable thermostat. **PowerSavers rebate: \$25 per unit**

Keeping you safe during and after summer storms

No one knows electrical safety better than the experts who practice it every single day. Beltrami Electric Cooperative encourages you to practice safety with these reminders - for during and after a summer storm:

AVOID WIRES AND WATER - When lightning strikes a home during a storm, the electrical charge can surge through pipes and utility wires. That means you can get zapped if you're touching water or any device that's plugged in, whether it's a landline phone or toaster.

SKIP THE MAKESHIFT SHELTER - During a storm, it's tempting to take cover under a picnic gazebo or golf cart, but in open-sided structures with no conductors to channel strikes, a bolt's path of least resistance to the ground could be you. On top of that, these structures raise your risk



of a lightning strike because of their height. Keep moving toward suitable shelter.

PORTABLE GENERATORS - Take special care with portable generators, which can provide a good source of power, but if improperly installed or

(continued on page 8)



BE PREPARED BEFORE A STORM STRIKES

In the event of a power outage, be prepared by keeping the following items in an easy-to-find emergency supply kit.



■ WATER

Three-day supply, one gallon per person per day.



■ TOOLS

Flashlight, extra batteries, manual can opener, battery-powered or hand-crank radio, NOAA Weather Radio with tone alert.



■ FIRST AID KIT AND PRESCRIPTIONS

First aid supplies, hand sanitizer and at least one week's supply of prescriptions and medications for the family.

Learn more at www.ready.gov



AMERICA'S ELECTRIC COOPERATIVES

Source: American Red Cross, Federal Emergency Management Agency.

Northern Lights

CLASSIFIEDS

Classified ads rules

- Ads are due by the fifth of the month prior to publication of the next issue.
 - o Ads submitted by May 5 – will be published in June issue.
 - o Ads submitted between May 6 and June 5 – will be published in July issue.
- Ads may be submitted via our website at www.beltramelectric.com (preferred).
- Include name and Beltrami Electric account number on all submissions.
- All ads must be 50 words or less and typed or printed clearly.
- Members may only submit one for sale and one wanted or free ad per issue.
- No real estate, rental, personal or commercial ads will be accepted.
- Ads are published at no charge as space permits on a first-received, first-printed basis, **with no guarantee your ad will appear.**
- Ads are only allowed to be repeated for **three consecutive months** and must be resubmitted each month.
- Editor reserves the right to edit or reject any ad.
- All telephone numbers are presumed to have a 218 area code unless otherwise noted.
- Mail ads to: Beltrami Electric Cooperative, P.O. BOX 488, Bemidji, MN 56619

For Sale:

Two-room tent, 6-8 person, NIB \$125. Tent heater, \$20. Vintage Coleman camp stove, \$45. Tackle Logic soft shell tackle box, \$25. Bushnell 10x50 binoculars, \$20. Sport 50 dog training collar, \$120. Wagner HD power paint sprayer, \$50. Pet crate med size, \$20. Heat-mate kerosene heater, great for greenhouse, \$40. 224-2394.

Small old wood cook stove, in very good, usable shape. \$475. Call 444-8441, please leave a message.

Cut and split oak firewood, \$125 per pickup load, you need to haul. 224-3240.

FUN RAFT with ladder, canvas cover, anchor, and padded mat. Like new! \$700. 16' Lund fishing boat, classic with bench seats. Great shape! \$600. Contact Steve at 224-2814.

1986 Ford Bronco II 4x4, V6, AC 112,594 miles, nonsmoker. Brought here from Calif.

no rust, very nice condition, upholstery like new, cream/root beer brown color. \$5,500. 556-8593.

2012 Harley Road Glide Ultra, black, one owner, excellent condition, dealer-maintained. 33,000 miles. \$15,800. Call 547-2612.

White tub/shower. 60W x 73H x 31D. Vanity w/marble top and faucet. Homestead finish. White toilet. \$300. Like new. 760-3298.

Drolet wood stove, Myriad model. Used one season. \$675. Call Bob at 443-0426.

One-touch Weber charcoal grill, silver, 22.15 in, round, 36 in, high, new in box. 335-8945.

1991 BMW K-75 Lowseat. Always garaged, very well maintained, one owner (local), never an accident. Runs great. Includes custom soft-side luggage, complete set tools and oil wrench, shop manual and add-on tail rack. Call 854-7483 (Becida).

2001 Dodge 4x4 extended cab 4-door sport pickup, white, 190,000 miles. Runs and drives nice, good tires, transmission rebuilt at 170,000. Asking \$2,800/obo. Call or text Jeff at 766-1096.

Noritake China in Savannah pattern. Service for 16, plus 12 soup/salad bowls and 12 fruit/dessert bowls, serving pieces, coffee server, sugar bowl and cream pitcher. \$700. 759-2322.

Howmar -12 sailboat with trailer, all sails and rigging. 60 sq. ft. main and 30 sq. ft. jib. 12 feet in length and 5 ft. beam. \$900. Excellent cond. 931-209-3260.

Used pull-behind 44" Swisher Rough Cut brush cutter. 12 hp B&S engine, good condition, asking \$650. Call 760-8266.

Copenhagen collectors blue plates. 586-2927.

New 5' pearl Whirlpool bathtub, both air and water jets. Retail for \$2,800, will sacrifice for \$1,300. Never been used. 766-0228.

Craftsman lawn tractor: 20 hp, 42", automatic transmission - \$400; 44" x 26" x 31" wooden rocking chair - \$25. Call Steve 214-1796.

Set of 4 "casual" dining chairs with padded seats - \$25. Call Sue at 255-1385.

Deckboat: 19 foot Princecraft, 115 hp Merc, w/trolling motor, 2006. Service records available since purchased new. Also Shore Master lift. 368-2261.

Napoleon "Advantage Plus", gold plated trim, DC remote control gas fireplace (wood insert) with vent, blower and thermostat. \$800. Call Gary 760-4666.

Haier 2-cu-ft washer/dryer combo. All-in-one front load washer and electric dryer, in white. Still in box, never been used or open. Retail \$989, asking \$500. Maytag window air conditioner, 115V, 60 hrz, 14,000 Btu, 12 amp. Like new, runs great. \$150. 214-1060.

Motorized wheelchair, small wheelchair, rolling walker with basket, walker, 4-panel white Anderson patio door, \$200. 766-1123.

2010 Honda Fury 1300 motorcycle. 16,125 miles, one owner, never dumped. Cobra sweepers, stage 1 kit. Gunmetal gray. \$6,800. 556-9603.

German Shepherd – 20 months old, black and tan longhair. House broke. \$600. 556-6319.

Rear wheel weights off Case LA tractor, \$250. 200,000 Btu Reznor overhead natural gas shop heater, good for large shop or pole barn, \$250. 255-5808.

Three-wheel scooter, w/basket, charger and manual. Runs good, but needs battery. \$50. 224-3157.

Graduation is coming! Why not give a beautiful, homemade quilt? 4, 5, and 6-inch block, crazy, star quilts: Twin \$35, Full \$40, Queen \$45, King \$55. Antique oak rocker \$65; parlor table \$70; dining room table, 44x44, \$125; set of 6 matching oak chairs \$120. Sewing machines, \$15 each. 243-2702.

Vermeer Rebel hay baler, new in 2005; Massey Ferguson haybine, new in 2005; 8-ft Brillion seeder w/rubber tires; International 12-ft grain drill and International field cultivator. 751-4286.

Twin captains bed w/2 twin mattresses, matching small vanity with mirror. Good condition, no scratches. \$250 firm. 444-4650.

Pickup camper, 1995 Angler, 14x7. Good shape. \$1,000. 751-4855.

Four P245/70R17 tires, \$50 for all. Call 444-9166.

Cylinder heads for C Farmall and 10-20 McCormick-full gasket set. 10-20- many engine parts for H&M Farmalls, seat light bars, belt pulleys, gas tanks, hoods, air cleaners, wheel weights, 1 tractor tire 11x24, too many items to list! Call 647-8775 or 556-9925.

1984 16.5-ft Crestliner w/25 hp electric start, stereo w/speakers, auto bilge pump, rod holders, 2 swivel seats, 16-ft trailer, starter battery, \$3,150/obo. 1992 16.5-ft Crestliner Fish Hawk boat, 89 hp Johnson motor w/tilt&trim, stereo/speakers, auto bilge pump, starter battery, on-board charger, 3 swivel seats, Shoreland'r trailer, 12V power to bow, exc. cond. \$4,995/obo. 835-4331.

Wanted:

Older Meyers plow mount to fit 1986 Ford. 255-5808.

Free:

Vintage RCA Victor stereo with cabinet. 586-2927.

To give away - Gecko. 751-5730.

Items for sale by bid



2009 F550 4x4 Ford, 6.4 liter diesel, motor was replaced at 183,485,

transmission replaced at 236,593, current mileage is 283,189. Fiberglass bins, mounted 40' Versalift bucket. Minimum bid \$15,000. Truck is as is. **All sales final. Can be viewed 6/5/17-6/9/17. All bids must be received by 3:30 p.m. on 6/9/17.**



1995 Towmaster T-30, 30,000 lb trailer, fold-down spring assist ramps, pintle hitch, electric brakes, current DOT, 19' deck, 5' beaver tail. Minimum bid: \$3,500, cash only. Can be viewed 6/5/17-6/9/17. **All bids must be received by 3:30 p.m. on 6/9/17.**



Grant Application Deadline June 30, 2017

To be considered at the July 2017 meeting, grant applications must be received by June 30, 2017.

Community organizations and groups may apply for an Operation Round Up® grant by completing and returning an application form.

Grant applications and guidelines are available at the BEC office or by visiting our website at www.beltramelectric.com.

We are looking for you!

Beltrami Electric is looking for **Harold R. Donnell** (Redby, Minn.). Please call **218-444-2540** if you have any information.

Power Plant Tour (July 18-20) Registration Form *(continued from article on page 1)*

Please print names of participants the way you would like them to appear on your name tags. Your payment will be refunded if the tour is cancelled or if you cancel your reservation **at least two weeks prior to the trip**. We will send further details prior to departure. Trip is limited to ages 12 and over. Return form with check for \$100 per person or \$175 per double occupancy to: **Beltrami Electric Cooperative, P.O. Box 488, Bemidji, MN 56619**

Names of participants: _____

Address: _____

Email: _____

Telephone number: _____ Account number: _____

Systemwide meter upgrade – installing new meters to help serve you better



Work continues on our system-wide meter upgrade and to date we have installed almost 5,000 new meters. Our existing metering system was installed in the mid-1990s and has reached its end-of-life, and the manufacturer is no longer supporting this old equipment.

BEC has contracted with a third party metering company, Allegiant Utility Services, who began work in April, to assist in completing the remaining meter exchanges. Allegiant Utility Services' vehicles have their logo, as well as signage designating that they are a

Contractor for Beltrami Electric on them. The contractors from Allegiant Utility Services also wear an ID badge with their name and photo.



The new meters will improve reliability and give you more tools and opportunities to manage and save energy. The impact of the installation is minimal. Co-op members can expect to lose power for a few minutes on the day of installation. You may need to reset your electronic devices, such as digital clocks. In addition, the next bill will show two meter readings: one from the old meter and one from the new meter. We will not need to access your home or business, nor will you need to be on-site when this work is performed.

Board Meeting Highlights

Beltrami Electric's board of directors conducted its regular monthly meeting Friday, April 28, 2017. A quorum of directors was present.

The following reports were given:

- The board congratulated directors Charlie Perkins, Craig Gaasvig and Rick Coe on their election to the cooperative board.
- CEO Echternach made his monthly report, including discussion on March financials and an update on the new meter system and the Northern Solar project.
- Sid Sletten gave the financial report and reviewed the first quarter budget performance and an update on the Red Flag process at our cooperative.
- Arlene Hogquist reviewed the first quarter Balanced Performance Scorecard.
- Dan Edens reviewed the Emergency Response Plan exercises and training at the cooperative.
- Sam Mason reported on the annual meeting held April 20, 2017.
- Round-table discussions were held.
- Directors and the CEO shared highlights of meetings attended on behalf of the cooperative and discussed upcoming meetings and educational conferences.

The following actions were taken:

- Elected Rick Coe as President, John Lund as Vice President, Murl Nord as Secretary and Judy Honer as Treasurer.
- Approved the consent agenda.
- Approved the work order inventories.
- Elected Charlie Parson as the voting delegate for the National Cooperative Services Corporation with Bob Wallner as alternate.
- Appointed Bob Wallner and John Lund to the union negotiations committee.
- Appointed Sue Kringen and Judy Honer to the policy committee and the Bylaw review committee.
- Appointed Lea Perkins as Trustee to the Operation Round Up® board.
- Elected John Lund as Governor to Cooperative Development, LLC.

The next regular board meeting will be Wednesday, June 28, 2017.

Statement of Operations 1st quarter: year-to-date

	Qtr 1: 2016	Qtr 1: 2017
Operating Revenue.....	\$ 15,243,008	\$ 15,013,252
Cost of Purchased Power.....	\$ 10,073,396	\$ 10,511,725
Other Operating Expenses.....	\$ 3,812,959	\$ 3,792,211
Total Cost.....	\$ 13,886,355	\$ 14,303,936
Operating Margin.....	\$ 1,356,653	\$ 709,316
Interest Income.....	\$ 56,561	\$ 107,335
Other Margins.....	\$ 116,990	\$ 59,977
Total Margins.....	\$ 1,530,204	\$ 876,628
kWh Purchased.....	152,237,087	151,711,589
kWh Sold.....	150,751,709	150,396,638
Meters Billed.....	20,675	20,873



Beltrami Electric Cooperative Inc.

® Your Touchstone Energy® Cooperative 

4111 Technology DR NW
PO Box 488
Bemidji, MN 56619-0488
218-444-2540 • 800-955-6083
www.beltramielctric.com



PAYING THE PRICE OF POWER THEFT

It's often an "invisible" crime. Someone illegally hooks into a power supply, hooks up a service that has been disconnected or tampers with a meter to avoid recording electricity usage.

Legitimate electricity consumers do not engage in these behaviors, so the impact of electricity theft – including the danger – is often unrecognized.

Power theft carries deadly risks. Many thieves pay for the power they steal with their lives. Electricity theft is not just dangerous for those who steal. If you are on the same power line as someone who steals electricity, you could pay the cost for their theft too. The power line could become overloaded with electric energy, which could harm your electronics and appliances that are designed to receive a certain, steady amount of electricity. Electricity theft makes power service less reliable and lower quality for paying members.

Electricity thieves may also unknowingly feed energy back into the power line. This is dangerous for line workers who may assume that the power line they are working on is de-energized.

Safe Electricity reminds us that everyone can help prevent and reduce power theft:

- Notify your electric utility immediately if you know of an illegally connected service.
- Do not cut the seal on your meter base or tamper with your own

meter for any reason. If a contractor performing work at your location needs to access the meter base, contact Beltrami Electric.

- Apply for a legal service connection if you do not have one.
- Remain aware of your surroundings and report any suspicious activities to your electric utility.

Most electrical theft crimes occur through meter tampering, bypassing meters and tapping power lines. Other less frequent crimes include tapping into neighboring premises, using illegal lines after being disconnected, self-reconnection without consent and electrifying fences. Possessing fraudulent electricity bills is also a federal crime and is punishable by law.

Everyone is affected by power theft, and detecting and reporting illegal activity will help reduce the price paid. Since everyone pays for lost power, please let us know if you suspect meter tampering. Contact Beltrami Electric at **800-955-6083** to report possible theft of service.



Keeping you safe during and after summer storms *(continued from page 5)*

operated, can become deadly. Do not connect generators directly to household wiring. Power from generators can back-feed along power lines and electrocute anyone coming in contact with them, including co-op line workers making repairs. It's best to hire a qualified, licensed electrician to install your generator and ensure that it meets local electrical codes.

FLOODED AREAS – Stay away from downed power lines and avoid walking through flooded areas. Power lines could be submerged and still live with electricity. Report any downed lines you see to Beltrami Electric by calling **218-444-2540** or **800-955-6083** immediately.

ELECTRICAL EQUIPMENT – Never use electrical equipment that is wet – especially outdoor electrical equipment, which could be a potential danger after a summer storm. Water can damage electrical equipment and parts, posing a shock or fire hazard.

Beltrami Electric is a proud member of Touchstone Energy Cooperatives®. Along with 750 electric cooperatives nationwide, we have partnered with Touchstone Energy to put safety as our number one concern. For a checklist to assess safety hazards around your home or to take a quick safety quiz, go to <http://www.togetherwesave.com/power-of-community/safety>. For more safety tips and information, visit www.beltramielctric.com.