

NORTHERN

L I G H T S

September 2018



ELECTRICAL SAFETY 101

Here are some lessons you can pass on to your school-age children, no matter their level of education. IT COULD SAVE THEIR LIVES.

Elementary School

- Don't play near or around power lines.
- Stay clear of pad-mount transformers (those big green boxes) or other electrical equipment.
- Don't put objects, such as pens or pencils, in electrical outlets.

According to the Electrical Safety Foundation International (ESFI), nearly seven children are

treated in hospital emergency rooms each day for electrical shock or burn injuries caused by tampering with a wall outlet.



High School

- If you drive to and from school, obey all traffic laws and practice safety when driving in areas where utility crews are working.
- If you're in an accident involving a downed power line, assume the line is energized. Remain in the vehicle and call 911. If you must exit the vehicle, jump out of the vehicle with both feet together and avoid contact with the vehicle and the ground at the same time. Then, keeping your feet touching and on the ground at all times, shuffle away with small steps to reduce the risk for electrical shock or electrocution.



College


- Don't overload electrical outlets. Most dorms or campus housing are not equipped to handle today's use of electronic appliances and gadgets.
- Keep all electrical appliances and cords away from bedding, curtains and other flammable materials.
- Extension cords are only for temporary use and can become overloaded. Consider using power strips with an over-current protector that shuts off power automatically if too much current is being drawn.
- Watch out for outlets that get too hot to touch. If an electrical outlet becomes hot, there is potential for a fire. Unplug everything from the outlet and notify your landlord or dorm officials immediately.



DON'T FORGET TO GRADUATE! BELTRAMI ELECTRIC COOPERATIVE SUPPORTS A 100% GRADUATION RATE!



Beltrami Electric Cooperative Inc.

Your Touchstone Energy® Cooperative 

2018 Power Plant Tour recap – page 3

Seeking nominations for 2018 Touchstone Energy Community Award – page 8

NORTHERN

L I G H T S

Northern Lights (USPS 016488), Vol. 65, No. 9 is published monthly by Beltrami Electric Cooperative Inc., 4111 Technology Drive N.W., Bemidji, Minnesota 56619-0488. Subscription rate \$5. Periodicals postage paid at Bemidji, MN 56601.

Postmaster: Please send address corrections to Beltrami Electric Cooperative Inc., P.O. Box 488, Bemidji, Minnesota 56619-0488.

Office Hours: 8 a.m. to 4:30 p.m.
Monday – Friday

Member Service: 218-444-2540
or 1-800-955-6083

www.beltramielc.com

Board of Directors

President	Rick Coe, DISTRICT 6 (Minnkota Director)
Vice President	John Lund, DISTRICT 7
Secretary	Murl Nord, DISTRICT 1 (Square Butte Director)
Treasurer	Judy Honer, DISTRICT 9
Directors:	Charlie Perkins, DISTRICT 2; Charles Parson, DISTRICT 3; Craig Gaasvig, DISTRICT 4; Robert Wallner, DISTRICT 5; Sue Kringen, DISTRICT 8
CEO	Jared Echternach
Editor	Angela Lyseng

This institution is an equal opportunity provider and employer.

Minnesota State Electrical Inspectors

Beltrami County

Ron Ditsch

218-779-6758 - rjditsch@gmail.com

Cass and Hubbard Counties

Steve Schauland

218-652-2213 or fax 218-333-0451

These are the inspectors covering the area served by Beltrami Electric. They can be reached by phone Monday through Friday between 7 and 8:30 a.m. or by fax or email as indicated.

Gopher State One Call

1-800-252-1166 or 811

www.gopherstateonecall.org

Anyone who plans to dig is required by law to notify the state of their intentions at least 48 hours in advance.

All digging requires the 48-hour notification so that buried telephone lines, television cables, pipelines, utility electrical lines, and municipal water and sewer lines can be located to ensure that none will be severed or damaged.

STAY CONNECTED!



Like our page
on Facebook



Follow us
on Twitter



Visit our YouTube
channel



Grid resiliency

Jared Echternach, *CEO*

Resiliency of the grid is one of the most popular concepts being talked about in the electric industry today. This concept recently made headlines in the wake of hurricanes that caused extraordinary damage to Puerto Rico's electric grid, resulting in the longest sustained outage in U.S. history. "Lack of resilience" became the phrase to describe Puerto Rico's grid.

Resiliency is many things – it's reliability in your electric service, it's our ability to efficiently restore power, it's being able to meet the demands of new technology and it's how we serve you with various generation sources without skipping a beat. Ultimately, resilience is how we deliver on our promise to improve the quality of life for our members.

When it comes to having a resilient electric grid, it begins with a system that is designed and built to withstand high winds, powerful storms, cybersecurity threats and other disruptions that could result in outages. A resilient grid is also flexible and adaptable by allowing different types of generation – such as wind, solar, coal and hydro – to seamlessly work together to provide you with safe and reliable power. The way our systems react to advancements in technology – from demand response investments to serving the needs of electric vehicles – all factor into the resilience of our grid.

Resiliency is a 24/7, 365-days-a-year task. Whether it's the power lines, substations or generation facilities on our grid, it takes proactive maintenance and investment to keep them running smoothly. With thousands of consumers without power for months, the lack of

resiliency in Puerto Rico's power grid wasn't solely caused by hurricane damage; it was the result of years of neglect in taking care of their system and preparing for a worst-case scenario.

In a similar way to how we maintain our vehicles with regular oil changes, inspections and tire rotations, a grid must also be properly maintained. Throughout the year, we regularly conduct pole and line inspections. Our goal is to find a problem before it becomes one. For example, if we find a weak pole that has damage, we replace that pole. Doing so ensures that pole is as strong – or as resilient – as it can be.

Living in Minnesota, we know that significant power outages can occur. This was the case in June when Minnkota Power Cooperative, our wholesale power provider, experienced a transmission outage affecting eight of our substations. Thirteen miles of bulk transmission line was destroyed. Fortunately, because resiliency was built into the transmission system, Minnkota was able to switch the feed and restore power much sooner than if we did not have resiliency built into the system. Because of this, we have confidence in the resiliency of our system to recover from outage situations with as little disruption as possible.

In the dictionary, resilience is defined as "the ability to bounce back, recover quickly and go back into shape or position after being stretched." When it comes to providing our members with resilient service, this is what we work toward – day in and day out.

Beltrami Electric Cooperative

A THREE-DAY TOUR

Outside the Milton R. Young Station



Oliver III Wind Energy Center



A guided tour of the Milton R. Young Station

Liberty Dragline



Thirty-seven Beltrami Electric Cooperative members, two tour hosts (Angela Lyseng and Michelle Anderson) and one bus driver (Bemidji Bus Line's Pete Hill) embarked on a three-day tour from

July 24-26, to learn more about where their energy comes from and what it takes to deliver it to their homes.

The first stop of the tour was at Minnkota Power Cooperative's corporate campus in Grand Forks, N.D., where we received a short presentation about Minnkota and viewed the control center, print shop and operations shops.

We continued our journey west to the Oliver III Wind Energy Center, located just northwest of Mandan, N.D. There we were greeted by NextEra Energy's site managers Jeremy Weyrauch and Chase Dauenhauer. They did a short presentation about NextEra Energy, the company that owns and operates the wind towers which produce renewable wind energy for Minnkota. They provided details about how the wind turbines work and what kind of maintenance they require and answered questions from our group. We then had the opportunity to go into the base of one of the turbines. We proceeded to the Comfort Inn & Suites in Mandan, N.D., where we concluded the first day with dinner and a short program by Mary Schneider from the Milton R. Young Station. She presented information about Minnkota, the history of our energy generation and how it has grown and changed over the past 78 years.

A beautiful morning greeted us on day two, with our group heading to the Milton R. Young Station. We listened to a detailed presentation about how the plant works and then took a guided tour of the plant, including both the Young 1 and Young 2 generating units. After the tour, we were joined on our bus by BNI Coal employee Courtney Doll, who then

Garrison Dam



carefully directed our bus driver into one of the open-pit lignite coal mines, where we were able to view the large Kress haulers and front-end loaders up close. We also learned about BNI Coal's commitment to the environment and their investment in the reclamation process of land that has been mined. We finished the tour with an opportunity to go up into the dragline, Liberty, which uses a massive 77-cubic-yard bucket to strip the overburden from the land.

After lunch, our group headed to the Garrison Dam and Powerhouse near Riverdale, N.D., where our hydroelectric power is produced. Members learned about the construction of the dam and were able to view the generating units, penstocks, turbine and shaft.

Our third and final day featured a visit to the Lewis & Clark Interpretive Center and Fort Mandan in Washburn, N.D. Members toured the many exhibits at both locations and listened to a presentation on how fly ash from an area coal mine was used in construction of the visitor center and how it is utilized in products like ceramic tiles, cultured stone, carpet, paint, ceiling and flooring tiles, shingles and roofing materials, bricks and masonry and more. After the tour, we started the trip back to Beltrami Electric.

We would like to thank our members who took the time to learn more about where our electricity comes from and what it takes to be able to flip that switch when we need it. We hope everyone had a fun and educational experience. We look forward to hosting another trip next July!

Air-source heat pumps



Is an air-source heat pump a better investment than a central air conditioner?

A central air conditioner (CAC) will cool and dehumidify your home, but that is the extent. It is a piece of equipment that will be utilized off and on for only a few months if we experience hot, humid weather.

An air-source heat pump (ASHP) will cool and dehumidify your home and will also provide you with approximately 50 percent of your home's heating needs. It's a piece of equipment that will be used more than 10 months per year. A standard ASHP is a self-contained unit that uses existing ductwork to both heat and cool.

The initial investment for an ASHP is greater than a CAC, but the payback on the additional investment will come in just a few years. This is possible because of the efficiency of the heat pump; an ASHP will operate at an average of 200 percent efficiency.

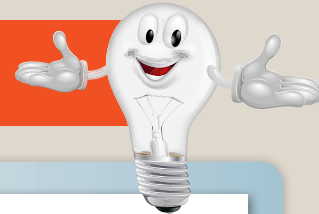
By adding a Warm-Flo plenum heater, the heat pump will provide a much

greater percentage of your home's heating needs. Couple this with a high efficiency fossil fuel furnace to take advantage of Beltrami Electric's off-peak electric rates and you'll have a very economical system. A system designed like this would equate to purchasing propane at 80 cents per gallon.

If you have a home that doesn't have ductwork, don't worry. A mini-split heat pump (MSHP) might be just the thing for you! Similar to a standard ASHP, a compressor is placed outside your home and is connected to an indoor unit typically mounted high on the wall of the room. It can be preset to run automatically or be adjusted with a remote control.

Be sure to check with our Energy Services department for information on rebates for qualified HVAC (heating, ventilation and air conditioning) systems as well as MSHPs. If you have any questions on HVAC equipment or available rebates, call us at 218-444-2540 or 1-800-955-6083.

Get more value for your energy dollar!



Heating and cooling system rebate checklist

All systems must be on off-peak unless otherwise noted

Electric plenum heaters

Easily converts your existing fossil fuel furnace into a dual-fuel heating system. You are able to use the most efficient, cost-effective heating source – fossil fuel or electricity – at any time.

Electric Heat rebate: \$20 per kilowatt (kW)

PowerSavers rebate: \$500 if installed with ENERGY STAR®-rated air-source heat pump. Must modulate to allow ASHP to operate down to 5 degrees F. and be on off-peak.

Electric thermal storage heaters

Draws electricity during off-peak hours when it is cheaper. Heat is stored in specially designed bricks to provide comfort 24 hours a day.

Electric Heat rebate: \$20 per kW

PowerSavers rebate: \$500 if installed with ENERGY STAR-rated air-source heat pump. Must modulate to allow ASHP to operate down to 5 degrees F. and be on off-peak.

Beltrami Electric rebate: \$30 per kW of new installed electric thermal storage heating equipment

Air-source heat pumps (including mini-split ductless option)

Works just like a central air conditioner in the summer. In the fall and winter, they provide super-efficient supplemental heat.

Electric Heat rebate: \$100 per ton (off-peak optional)

PowerSavers rebate: \$200-400 per ton, depending on efficiency ratings

Geothermal heat pumps

Provides the highest efficiency for space heating and cooling available today. The system transfers heat to and from the earth using only small amounts of electricity.

Electric Heat rebate: \$200 per ton (off-peak optional)

PowerSavers rebate: Open loop, \$200 per ton, maximum of \$2,500. Closed loop, \$400 per ton, maximum of \$5,000. Must meet program efficiency requirements.

Underfloor electric heating

A popular off-peak option because the system transfers consistently across the floor to reach people and objects, providing both comfort and efficiency. Applications include electric boiler with hydronic tubing or electric cables or mats.

Electric Heat rebate: \$20 per kW. Must be set up for storage.

Beltrami Electric rebate: \$30 per kW. Must be on off-peak.

Other electric heating systems

Options include electric baseboard, cove heaters and more.

Electric Heat rebate: \$20 per kW. Must be on off-peak

Understanding right-of-way (ROW) clearing

Beltrami Electric Cooperative operates and maintains more than 3,479 miles of overhead and underground power lines. We are dedicated to providing our members with safe and reliable electric service. As you will notice after any severe thunderstorms with high winds, trees growing around power lines can cause electric faults and outages and can create a safety hazard for our crews and the general public. Beltrami Electric has adopted a 3-step right-of-way corridor maintenance cycle in an effort to ensure safer, more reliable electric service.



What is the right-of-way (ROW) corridor for an electrical line?

A right-of-way (ROW) corridor for an electrical line is a strip of land that an electric utility uses to construct, maintain, repair or replace an overhead or underground power line. The corridor allows the utility to provide clearance from trees, buildings and other structures that could interfere with the line installation, maintenance and operation. Beltrami Electric Cooperative requires a 30-foot clearance on each side of the poles, and a 15-foot minimum on each side of the poles, when approaching a residence.

Beltrami Electric's 3-step right-of-way corridor maintenance cycle

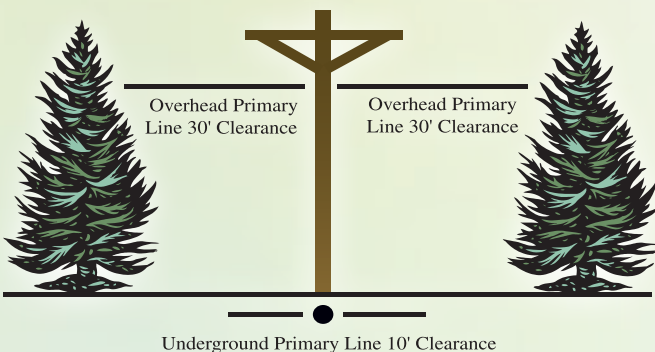
STEP 1: Trees and brush are removed from the corridor.

STEP 2: An EPA-approved herbicide is applied to control resprouting of trees and brush during the upcoming mid to late summer season.

STEP 3: A review of any areas that may have been missed in prior herbicide treatments will follow 1-2 years after step 2. Subsequent maintenance cycles follow in 8- to 10-year increments, which will be less intensive due to the decreased amount of trees and brush.

SAFETY is the number one reason for cutting down trees around power lines. Electricity always seeks a path to the ground. Conductors of electricity include water, your body, tree branches, metal poles and ladders. When you become part of this path, you may be injured or killed.

SERVICE RELIABILITY, after safety, is a key responsibility of your electric cooperative, providing members with the best possible power quality. One tree on your property coming into direct contact with power lines not only affects your home, but it also affects the power quality for hundreds of your neighbors. Proper clearance today prevents inconvenience tomorrow. Clearing lines reduces blinking lights, power surges and enhances power quality, which protects your electronics and appliances that could cost thousands of dollars to repair or replace.



Why is access to lines important?

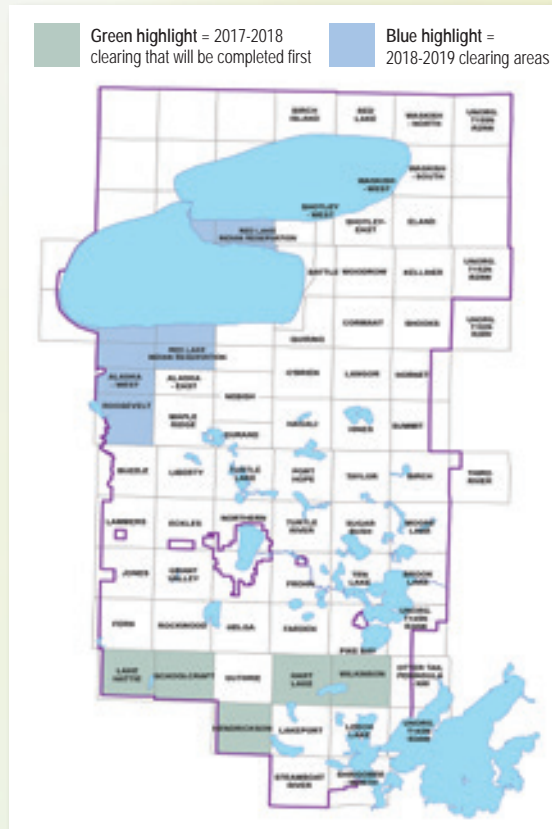
Imagine that a large storm with 80 mph straight-line winds has just swept through our service area, knocking out power to thousands of members. As our crews are dispatched to repair broken poles and downed lines, it's getting dark and conditions are very wet. In order to restore outages in the shortest amount of time, our linemen need to be able to drive our large trucks into the right of way. If there are obstructions such as trees or heavy brush, our crews are delayed in restoring electricity, thus leaving our members in the dark for an extended period of time. Please remember this when considering the reasons why it is important for your cooperative to have an aggressive tree-clearing program. We do it to keep your lights on with limited interruption.

Please identify and notify Beltrami Electric Cooperative of possible hazards and/or sensitive items within the overhead corridor. The following are a few common examples:

- Septic systems should be identified (fenced, signed, etc.) to avoid damage when crews are on site to clear trees or maintain overhead lines.
- Above-ground survey markers need to be identified to ensure they are not destroyed.
- Note wells and water lines.
- Personal property, such as vehicles and trailers, needs to be moved from the corridor during the tree-clearing process.

With your help, we can make sure that our employees have ample access to cooperative lines in case of needed repair. This will help ensure their safety and also make for shorter outage restoration times for our members.

Beltrami Electric will be removing trees and brush within the overhead corridor during the upcoming years in the townships highlighted in green and blue.



Northern Lights

CLASSIFIEDS

Classified ads rules

- Ads are due by the fifth of the month prior to publication of the next issue. Example: o Ads submitted by September 5 will be published in October issue.
- o Ads submitted between September 6 and October 5 will be published in November issue.
- Ads may be submitted via our website at www.beltramelectric.com (preferred).
- Include name and Beltrami Electric account number on all submissions.
- All ads must be **50 words or less** and typed or printed clearly.
- Members may only submit one for sale and one wanted or free ad per issue.
- No real estate, rental, personal or commercial ads will be accepted.
- Ads are published at no charge as space permits on a first-received, first-printed basis, **with no guarantee your ad will appear.**
- Ads are only allowed to be repeated for **three consecutive months** and must be resubmitted each month.
- Editor reserves the right to edit or reject any ad.
- All telephone numbers are presumed to have a 218 area code unless otherwise noted.

For Sale:

1954 Minneapolis Moline GB, excellent runner, 65 hp, new rear tires, \$1,500. 444-4796.

1973 Alumacraft 14 ft. boat, trailer, 18 hp Johnson Minn Kota Endura 30-lb. trolling motor, Eagle Magna locator, oars, swivel seats, cover. 333-0494 or 308-1580.

Western Hats from Cody WY. 2 MHT (Master Hatters brand) both size 7, color: Fawn or Brown. One Charley Horse brand size 7-1/8. Bone color. All new in exc. condition. Your choice \$40. Wire mesh pet carrier for large dog. Has solid galvanized bottom. \$40. Canning supplies: jars (pt, qt, 1 1/2 pt) w/rings, .50 cents. Food press, \$5. 586-2884.

Solid upright piano - \$100. Beautiful mahogany stereo - \$75 (can deliver). 209-1010.

25 hp Johnson outboard motor. 20-in. long shaft. \$500. Lift chair recliner, green vinyl \$200. 751-3127.

Beautiful flowers! Local organic flower farmer wants to deliver four weekly bouquets at one monthly price of \$85. Annuals, perennials and herbs. Every bouquet will surprise you. Call 556-0586.

High-top kitchen table and 4 chairs. Brown and black. Like new condition. \$175 firm. 864-871-3213 (Solway).

48" TV, \$50; Patio door in frame with windows both sides 80" tall, 138" wide, patio doors 68" \$100, 5" wheel hitch with catcher \$150, bagger and all attachment JD mower \$50, JD 14T baler with JD rake and mower 9' MC \$1,000 for all, Bowflex with all extras \$600. 209-1863.

PONTOON: Premier 25' with trailer. Honda motor - 50 hp, extra-large pontoons, trolling motor (new), bathroom (canvas, never used), pontoon cover and pontoon lift with metal roof. Call 224-2141 mornings.

Fishing boats (2) Crestliner/Lund 14' - \$250 each. Call 224-2483 mornings.

Yamaha Eb Alto Saxophone - used 2 years - \$450. 444-7389.

Heatmor wood boiler for sale. This boiler has been completely rebuilt. I am asking \$2,500. 835-5533.

T&C stainless 50 cal. black powder rifle \$225. 224-2460.

3500 Ram, 300,000 miles, good condition \$7,950. 18-ft. Willie heavy aluminum Alaska guide boat, 50 hp Yamaha with 4 hp Johnson kicker, good trailer, powerlift \$9,500. 766-8819 or 561-543-5651.

Newmans aluminum boat lift, 4,500 lbs., in the Walker area, 4 years old, excellent condition, green canopy, \$3,300. Contact Mike at 651-247-1478.

Queen size power lift bed with Beautyrest mattress, very nice condition \$1,000 (\$2,700 new). Two - LT245/75 R16 tires, mounted on 8 bolt Chevy van rims, like new, \$120 for pair. Call 368-8282.

RV windows, asst. sizes, \$5 each. Wood dining table, computer stand, washing machine, Philips TV, works good, small wood table with folding sides. Call 209-6759.

Sugar beet truck drivers - Oct. 1 until the end of harvest - CDL license not required - motel room provided. Ege-land farms - Fisher, Minn. 779-8252 or (701) 739-1783.

Grease-dumpster 38-in H x 5-ft L x 44-in W - 18x26-in fill lid, whole top opens \$300/obo. 751-5763 leave message.

265 John Deere garden tractor, snowblower and lawn mower. 949-929-5187.

16' Aluminum duck boat, 35 hp Evinrude, trailer, fold down blinds on sides and cover \$1,500. Approx. 30 duck decoys; 42 silhouette goose decoys; also full body goose decoys. 3 pt. 7' Erskine snow blower \$250. 3 pt. 7' blade \$75. 3 pt. rock puller \$200. 224-2844, leave message.

14' fishing boats, Lund, Mirrocraft, and Naden: \$275 - \$450/each. Call 760-8266.

15 hp Evinrude, 14-ft Crestliner, both older, \$450. Speed Shack XL Frabill 4-hole portable fish house, good condition, \$80. Honda pressure washer, no hose or wand, not used much, \$50. 586-2740 Ask for Terry.

2014 Crossroads 5" wheeler w/3 slide-outs, excel. cond. \$22,500; horse-drawn dump rake \$600; Lincoln stick welder w/all accessories \$150; Craftsman radial arm saw and stand \$75. All obo. Call or text 766-2200 or 766-2503. Can send pictures.

Mixed firewood. Cut, split and dried. \$55 standard pickup load. You haul. Kelliher area. 647-9003 or 320-256-7255.

Propane fridge/freezer, propane freezer only, med. size dog crate/kennel, electric irrigation pump. 556-9440.

3300 John Deere self-propelled combine and hydraulic rock picker. Gopher poisoning machine, 3PT Verminator, brand new. 759-0011.

Les Kouba original charcoal print, one-of-a-kind, no prints offered, beautifully framed 28" x 21," \$950. 647-8896.

4x8 trailer, wood sides, spare tire \$300. 444-0423.

Upright Whirlpool commercial freezer, Model EV201NXMQ04, \$50, you pick up. Call 556-8000.

2015 Ski-Doo MXZ TNT 600 E-TEC snowmobile, electric start, reverse, mirrors, skid plate, yellow/black, 121 inch track, 29XX miles. Showroom condition, reason for sale, wife's sled, she has decided not to snowmobile any longer. Blue book is \$7,368, Summer special \$6,400. 612-868-3807.

Sears portable kerosene tube heater, 115-volt, 30,000 Btu with thermostat; oak tool box with carrying handle and drawers H 12", W 9", L 20"; Minnesota S treadle sewing machine in wood cabinet; gray fiberglass screening 54' x 63' \$35. 547-1836.

18" or 20" Stihl MS291C 55cc easy start, used one time, cost \$789 will sell for \$700, includes case. Antique exam/delivery table \$1,000, Bowflex with all the extras \$1,000. Ceiling fan missing one screw \$15, Mower deck with bagger 425 JD \$75, patio table with four chairs great shape, \$100. 243-2663.

3-bedroom/2-bath mobile home, new shingled roof, new propane furnace, new water softener, new windows, appliances, new handicap shower never used. To be moved. 224-2369 or 820-1321 leave message.

Yard Machine MTD log splitter, 25 ton/6.5 hp, vertical/horizontal log splitter. \$700. Call Marv (cell#) 623-293-3723.

Like new Pack n' Play, \$50. Thick soft side zipper car top luggage carrier. 3 1/2 feet x 3 1/2 feet x 20" H, \$50. Both items excellent condition. 931-209-3260.

2005 GMC Safari van, 222K miles, starts and runs well, needs a little TLC, \$1,800. Benedict area. Call Dave at 651-324-5576.

1974 Chevrolet 454 engine. Complete from carburetor to oil pan. Running but currently installed in a vehicle. If interested, you can hear it run prior to purchase. No idea how many miles are on engine, it was in the car when I purchased it. This is a 2-bolt main bearing block, not a 4-bolt. Asking \$650. Any questions, call 444-2280, leave message.

2 Michelin tires, P235/55R17, \$35 ea. 751-1907.

Hay, square bales. \$3.50. 444-0622.

Case 930 Comfort King Cab, tires 184x34 at 85 percent, duals, needs work. \$2,500/obo. 751-5667.

Custom cedar log 4-ft round table with 4 matching swivel chairs, just like new. \$1,000. 586-2612

15 1/2' Spectrum boat, 50 hp Mercury motor w/trim, trailer with 13" tires, good cond. 12' boat with 3 hp Evinrude and trailer, in good cond. Heavy duty 2-axle utility trailer. 3-point adjustable blade. 444-2925.

Dog kennel, 4' long, 2' deep, 2' high, 2 rooms w/hinged covers for both rooms, homemade, good birthing kennel for small dog or starting kennel for puppy, built-in heat lamp. \$75. 224-2443, leave message if no answer.

Miscellaneous size tires for sale. 766-2132.

Antique chrome red top table, 1 leaf, 4 padded chairs. Very nice condition, \$400. Call 556-3290.

78 Corvette, rebuilt 350 motor and transmission, body decent. 751-1009.

Wanted:

Small piano, in Bemidji area. 444-8826.

John Deere M Series #51, 1950 Hay Mower 5-ft bar. 368-5808.

Will pick up for recycling: old appliances, pianos, LP tanks, E scrap, etc., FREE OF CHARGE. Will cut/haul larger items on a % basis. Cash for junk vehicles. 75 mile radius of Bemidji. 712-369-3291.

Trailer for 20-ft pontoon. Also, 6x10 aluminum utility trailer. 751-1009.

Free:

Windows out of our house with screens, some doors. Call 243-2663.

We are looking for you!

Beltrami Electric is looking for **Valerie L. May (Red Lake, Minn.)**. Please call **218-444-2540** if you have any information.

Are you a "snowbird"?

Do you close your home or cabin for the season and head to warmer regions? Do you have the post office forward your mail? Did you know that the USPS will forward your electric bills to your new location, but they will not forward your monthly Northern Lights newsletter? They send them back to the cooperative every month, and in turn, charge us a return fee for each issue.

A great solution for both you and your cooperative is to notify our member service department of your new address so they can set up a seasonal address for you. You can choose the date to start and stop forwarding, and you can even set up a recurring forwarding address to start and stop the same time each year.

By notifying us, you can ensure that you receive your member newsletter and also help the cooperative save by alleviating return postage fees every month. Contact our office at **218-444-2540** or toll-free at **800-955-6083**.

You also have the option to not receive a paper copy of the newsletter if you prefer to view it on our website at www.beltramelectric.com.



**Grant Application Deadline
Sept. 30, 2018**

To be considered at the October 2018 meeting, grant applications must be received by Sept. 30, 2018. Community organizations and groups may apply for an Operation Round Up® grant by completing and returning an application form. Grant applications are available at the BEC office or by visiting our website at www.beltramelectric.com.

Buena Vista Fall Colors Festival



Buena Vista Ski Area & Logging Village
(along with the Go & Whoa Harness Club)

Saturday, Sept. 15, 2018, 11 a.m. - 3 p.m.

Sunday, Sept. 16, 2018, 11 a.m. - 3 p.m.

Family fun, food, horses, wagon rides and more!

Music, crafts, square dancing, wood carving, kids' activities, historic display paintings in train car, walking tours, chainsaw carvings and blacksmith demonstrations!

Rates: \$6 (Ages 13 and over) • \$3 (Ages 5-12) • Free (Under age 5)

www.bvskiarea.com • 218-766-9919

(12 miles north of Bemidji on County Road 15)



Beltrami Electric Cooperative's office will be closed

Monday, Sept. 3,
in observance of the Labor Day holiday.



Board Meeting Highlights

Beltrami Electric's board of directors conducted its regular monthly meeting Wednesday, July 25, 2018. A quorum of directors was present.

The following reports were given:

- CEO Echternach made his monthly report, including discussion on the June financials, recent storm damage, Operation Round Up and legislative issues affecting the electric industry.
 - President Coe presented Resolutions as memorials for former Directors John Cronemiller and Robert Paine, who passed away.
 - CEO Echternach discussed the NRECA Commitment to Zero Contacts nationwide initiative.
 - Dan Edens and Lee Pemberton reported on the recent storms in our service territory.
 - Zach Stute gave a report to the board on the NRECA Youth Tour he attended recently.
 - Arlene Hogquist gave the financial report and presented the second quarter Balanced Performance Scorecard.
 - Directors and the CEO shared highlights of meetings attended on behalf of the cooperative and discussed upcoming meetings and educational conferences.
- The following actions were taken:*
- Approved the consent agenda and work order inventories.
 - Adopted Resolutions as memorials for former directors.
 - Adopted a Resolution to join the Commitment to Zero Contacts initiative.

The next regular board meeting will be Wednesday, Sept. 26, 2018.

Statement of Operations Year-to-date: June 2018

	June 2017	June 2018
Operating Revenue.....	\$ 26,717,976	\$ 29,045,464
Cost of Purchased Power.....	\$ 19,028,985	\$ 20,042,751
Other Operating Expenses.....	\$ 7,828,435	\$ 7,864,874
Total Cost.....	\$ 26,857,420	\$ 27,907,625
Operating Margin.....	\$ (\$139,444)	\$ 1,137,839
Interest Income.....	\$ 179,455	\$ 146,556
Other Margins.....	\$ 77,320	\$ 39,905
Total Margins.....	\$ 117,331	\$ 1,324,300
kWh Sold.....	257,453,090	277,540,594
Meters Billed.....	20,842	20,981

Join us for Electric Vehicle Day!

Are you interested in electric vehicles? Are you curious about the features, performance and handling of an electric vehicle? Then you need to attend Beltrami Electric's EV ride and drive event! Come out and test drive our Chevy Bolt, enjoy refreshments and learn more about the features and benefits of owning an electric vehicle. We also invite EV owners to contact Angela Lyseng at **218-444-3689** to sign up to attend with your vehicle and share your experience with others.

Tuesday, Sept. 11 | 4 - 7 p.m.

Beltrami Electric Cooperative
4111 Technology Dr NW, Bemidji



**BELTRAMI'S
EV RIDE &
DRIVE EVENT**



Beltrami Electric Cooperative Inc.

® Your Touchstone Energy® Cooperative 

4111 Technology DR NW
PO Box 488
Bemidji, MN 56619-0488
218-444-2540 • 800-955-6083
www.beltramielctric.com

Seeking nominations for the 2018 Touchstone Energy® Community Award



Do you know an organization that has made outstanding contributions to our local community?

Beltrami Electric is seeking applications for the Touchstone Energy® Community Award, which recognizes businesses, nonprofit and community groups that have shown a strong commitment to our community. Any organization that has helped make their community within the area served by Beltrami Electric a better place to live and work is eligible for the \$500 cash award.

Community members may nominate an organization, association or business by completing the Touchstone Energy Community Award application form available at Beltrami Electric Cooperative, 4111 Technology Dr NW, Bemidji, or online at www.beltramielctric.com. Questions may be directed to Angela Lyseng at 444-3689. The application will require a description of the project, program or event and the positive impact it made on the community. Completed applications must be received at Beltrami Electric's office by Oct. 31.

"As an electric cooperative serving this area, we have a high regard for community involvement," Beltrami Electric CEO Jared Echnernach said. "This award allows us to highlight and encourage those individuals or organizations that have shown an outstanding commitment to our community."

The award recipient will be announced Nov. 5, 2018, and will then contend for the statewide Touchstone Energy Community Award, which has a cash prize of \$1,000. The statewide award winner will be recognized at the Minnesota Rural Electric Association's annual meeting in February 2019.

The Minnesota Touchstone Energy cooperatives are part of a national alliance of more than 700 rural electric cooperatives that adhere to the values of integrity, accountability, innovation and commitment to community.

For more information and to download an application, please visit our website at www.beltramielctric.com.



2017 award winner: Bemidji Area Cross Country Ski Club

Past years' winners

- 2004 - Blackduck Tri Sigma General Federated Women's Club
- 2005 - Bemidji Area Task Force on Underage Drinking, Drugs and Gang Activity
- 2006 - Healthy Community Healthy Kids
- 2007 - The Sexual Assault Program of Beltrami, Cass and Hubbard Counties
- 2008 - The Radiothon to End Child Abuse
- 2009 - Bemidji Garden Club (Formerly Northwoods Garden Club of the Bemidji Area)
- 2010 - Bemidji Skate and Bike Association
- 2011 - Kelliher Resource Center Committee
- 2012 - Bemidji Area Take a Kid Fishing* (**Awarded statewide award*)
- 2013 - Blackduck Area Toys for Kids (**Awarded statewide award*)
- 2014 - Bemidji Area Reading Canines (BARC)*
- 2015 - Jack Pine Stables
- 2016 - Northland Composite Squadron - Civil Air Patrol
- 2017 - Bemidji Area Cross Country Ski Club