


NORTHERN

L I G H T S



**Beltrami Electric
Cooperative Inc.**

® Your Touchstone Energy® Cooperative 

July 2019

Live wire

MINNKOTA CREWS MAKING PROGRESS
ON BLINK OUTAGE PROJECTS

Looking up, the two lineworkers see wires carrying thousands of volts of electricity. Looking down, they see 45 feet between their boots and the grass.

This is not a job for the faint of heart, but for Minnkota Power Cooperative (our wholesale power provider) lineworkers, it has been a routine part of the summer construction season.

Crews have been working safely and efficiently as they move from pole to pole along the power delivery system that helps serve Beltrami Electric Cooperative members. Equipment is being installed to reduce the impact of blink outages – those one- to three-second losses of power caused by a lightning strike or other power line contact. About 107 miles of 69-kilovolt (kV) power lines in Beltrami Electric's area are the focus of an effort to improve system reliability in 2019. From 2015 to present, blink outage mitigation equipment has been installed on about 1,000 miles of the Minnkota system, specifically focused on the most vulnerable sections as identified by a comprehensive 2015 study. ~ *continued on page 4*

Scholarship recipients – page 3

Unclaimed capital credits – page 8

NORTHERN L I G H T S

Northern Lights (USPS 016488), Vol. 66, No. 7

Northern Lights is published monthly by Beltrami Electric Cooperative Inc., 4111 Technology Drive N.W., Bemidji, Minnesota 56619-0488. Subscription rate \$5. Periodicals postage paid at Bemidji, MN 56601.

Postmaster: Please send address corrections to Beltrami Electric Cooperative Inc., P.O. Box 488, Bemidji, Minnesota 56619-0488.

Office Hours: 8 a.m. to 4:30 p.m.
Monday – Friday

Member Service: 218-444-2540
or 1-800-955-6083

www.beltramielc.com

Board of Directors

Chair	Rick Coe, DISTRICT 6 (Minnkota Director)
Vice Chair	John Lund, DISTRICT 7
Secretary	Murl Nord, DISTRICT 1 (Square Butte Director)
Treasurer	Judy Honer, DISTRICT 9
Directors:	Charlie Perkins, DISTRICT 2; Charles Parson, DISTRICT 3; Craig Gaasvig, DISTRICT 4; Robert Wallner, DISTRICT 5; Sue Kringen, DISTRICT 8
President and CEO	Jared Echternach
Editor	Angela Lyseng

This institution is an equal opportunity provider and employer.

Minnesota State Electrical Inspectors

Beltrami County

Wade Koons

218-255-3011 - wade@kooninspections.com

Cass and Hubbard Counties

Steve Schauland

218-652-2213 – Fax: 218-333-0451

These are the inspectors covering the area served by Beltrami Electric. They can be reached by phone Monday through Friday between 7 and 8:30 a.m. or by fax or email as indicated.

Gopher State One Call

1-800-252-1166 or 811

www.gopherstateonecall.org

Anyone who plans to dig is required by law to notify the state of their intentions at least 48 hours in advance.

All digging requires the 48-hour notification so that buried telephone lines, television cables, pipelines, utility electrical lines, and municipal water and sewer lines can be located to ensure that none will be severed or damaged.

STAY CONNECTED!



Like our page
on Facebook



Follow us
on Twitter



Visit our YouTube
channel



Session ends quietly

Jared Echternach, *President and CEO*

Legislative update

The Minnesota legislative session ended with little fanfare in terms of energy legislation. As I reported at our annual meeting in April, we were working diligently to improve the state mandated Conservation Improvement Program that had become outdated, burdensome and costly to cooperatives and municipal utilities. Unfortunately, some legislators and the Minnesota Department of Commerce attempted to use our proposals for change as leverage to support the administration's agenda of 100% carbon-free energy by 2050 and clean Energy First legislation – both of which would have placed unfunded mandates on Minnesota's electric utilities. We also were able to avoid potentially harmful legislation that would have forced electric utilities in Minnesota to provide members' metering data to third parties. We pride ourselves in protecting your data and we will continue to oppose legislation that could be harmful to you, our members.

In the end, no major energy legislation passed this session ... and sometimes that's a good thing.

Capital credits



Capital
Credits

A major advantage of the cooperative business model is that any margins realized at the end of the year are allocated back to the membership in proportion to

their patronage over the year. These margins are used to invest in and maintain your electric distribution system and to reduce borrowing costs. Over time these allocations are retired (paid out) to our members. On page 8 you will see a list of former members who have not claimed their capital credits. If you know the whereabouts of any of these former members, please have them contact the cooperative so we can pay their capital credits.

New employees

We have a couple new faces at your cooperative. Ed Dreher joined Beltrami Electric as a mechanic in our shop. Dustin Steigauf has joined our team as a tree trimmer/groundman. Please join me in welcoming Ed and Dustin to our cooperative family.

Independence Day

By the time this newsletter hits mailboxes, Independence Day will



be upon us. As you gather with family and friends over the Fourth to celebrate America, please keep safety top of mind. I wish you a safe and enjoyable Fourth of July!

Congrats!

CLASS OF 2019 SCHOLARSHIP RECIPIENTS

Beltrami Electric Cooperative awards scholarships annually to students attending seven high schools within BEC's service territory. Beltrami Electric scholarships are funded with unclaimed capital credits that otherwise would be forfeited to the state. This year, the cooperative awarded \$1,000 scholarships to seven high schools in our service area. To be eligible, students' parent(s) or guardian must be a Beltrami Electric member and show proof of enrollment in a post-secondary education institution the following year. Each school selected the winners through committees or guidance centers.



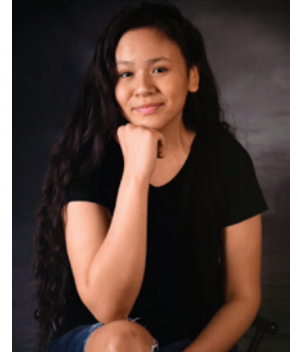
Kaitlyn Tennyson
Bemidji High School



Nolan Juelson
Blackduck High School



Enyssa Birt
Cass Lake-Bena High School



Shanelle Head
Kelliher High School



Kiah Reimer
Laporte High School



Jalen Kelly
Red Lake High School



Jensen Rice
Walker-Hackensack-Akeley High School



Summer Miller
*Voyageur's Expeditionary
High School*

AT-LARGE SCHOLARSHIP RECIPIENT

Beltrami Electric also awarded one \$1,000 At-Large Scholarship to a student who is a dependent of a BEC member attending a school other than the seven listed above. This scholarship was awarded based on a combination of academic achievement, work experiences, participation in school and community activities, submission of a 500-word essay and two written letters of recommendation by a third party.

Beltrami Electric is pleased to contribute to the further education of students each year. We wish them the best of luck in their studies and careers!



A Minnkota lineworker removes an old hanging lightning arrester on an energized 69-kilovolt (kV) line.

Live wire (cont'd)

MINNKOTA CREWS MAKING PROGRESS ON BLINK OUTAGE PROJECTS

“It’s not that the frequency of blink outages have necessarily been increasing in recent years, but rather that member standards for reliability continue to rise,” said Skylar Ertman, civil engineer on the project.

Ertman said studies are underway on some of the completed line sections to determine the effectiveness of the installed equipment.

On the job

While it is possible to de-energize a line to complete the work, there are instances when taking that line out of service would cause a widespread power outage. The alternative? Leave those transmission lines active while the necessary work is performed.

Some call it live-line maintenance.



A poletop helmet is installed on top of the structure to prevent birds from nesting and perching on the structure.

Others refer to it as hot-sticking or barehanding. No matter the name, it’s challenging work that requires specialized training and equipment.

“Working the wires live is kind of a fun, interesting job,” said Kelly Hebl, area lineworker. “That way we don’t disrupt service to the co-ops.”

On a typical job, one lineworker will ride up in a bucket truck with the necessary tools and equipment, while another lineworker will climb the wooden pole. Other crew members stay at ground level to serve as spotters, operating equipment and ensuring the work is being done safely.

“We have guys on the ground making sure everyone is keeping their required clearances from the energized line,” Hebl said.

The line work is completed with insulated fiberglass “hot sticks” with various attachments, including wrenches, clamps and ratchets. To create enough space to safely work on the energized line, lineworkers use their hot sticks to detach the line from the structure. A bucket truck with an insulated attachment atop the boom lifts the wires above the structure.

Communication is constant on-site. As equipment is removed and lowered to the ground, the line

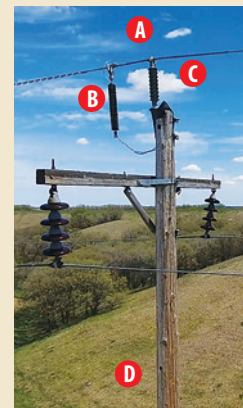
worker on top of the structure yells “Headache” to gain the attention of the crew members at ground level. They repeat the call to ensure everyone heard it.

The crew can complete about one pole per hour when the line is live, compared to about 30 minutes when it is taken out of service. Still, the extra time is worth it when de-energizing the line would impact a large number of homes, farms, schools and businesses.

“We always want to keep the substation going and the power on,” Hebl said. “When we’re hot-sticking, we’re able to do that.”

The basics of blink outage mitigation

To help reduce the frequency of blink outages, crews are installing four pieces of equipment:



A. New post-top insulators

Polymer post-top insulators are installed to replace the aging porcelain insulators. The post-top insulator is attached to the top phase wire at each structure, helping prevent the undesired flow of electricity to the ground.

B. Hanging lightning arresters

Hanging lightning arresters attach to the top phase wire and connect to the structure ground. This device routes a lightning strike around the electrical system and safely sends the current to ground.

C. Poletop helmet

A poletop helmet is a plastic cone-shaped device that deters birds and other animals from sitting on the structure, protecting them from the energized line.

D. Pole wrap

A pole wrap is a sheet of plastic that attaches around the base of the pole, creating a slippery surface that deters wildlife from attempting to climb the pole.

Safe use of generators

During a power outage, you may find yourself in the dark and unable to use your appliances for a period of time. A generator can provide temporary electricity that, depending on type, can power a few appliances or an entire building. While convenient during an outage, generators used improperly can also create safety hazards.

Before investing in a generator, think first about your electrical needs and usage. Know the difference between standby and portable generators.

Standby generators, like a Briggs & Stratton, are available from Beltrami Electric and are wired directly into the home and can be sized to match the electrical demands of the home or building. A permanently installed standby generator must have an approved transfer safety switch to avoid feeding electricity back into the electrical system outdoors, creating what's known as

“back-feed.” Back-feed is dangerous for lineworkers as well as anyone who may be near downed power lines.

Portable generators do not permanently attach to the home and can power only the appliances that are plugged into the generator, so consider essential electrical needs when choosing. To avoid back-feed into the utility electrical system, the portable generator should never be plugged directly into the home. Before using a portable



generator, read all manufacturer instructions.

Place the generator in an open, well-ventilated area away from the home or garage. Using your generator in a space that does not have adequate ventilation increases the risk of carbon monoxide (CO) poisoning from fumes. As an extra precaution, install CO detectors around the home and test them regularly. CO is odorless and colorless and can be deadly. Symptoms of CO poisoning include dizziness, nausea, and headaches. If you suspect a problem, seek fresh air immediately.

Before turning the generator on, make sure nothing is plugged in. Keep children and pets a safe distance from generators. After starting it, only plug appliances or those connected to heavy-duty extension cords directly into the generator. Never plug the generator into a wall outlet to avoid the risk of back-feed.

Generators pose electrical risks, especially when operated in wet conditions. Use a generator only when necessary during moist conditions. When possible, protect the generator by operating it under an open, canopy-like structure and on a dry surface where water cannot form puddles or drain under it.

It is recommended that a generator be operated once a month for 10 minutes to ensure it is running properly. Store a standby generator in an easily accessible, weatherproof area. Have enough fuel for at least 24 hours in case of a power outage.

When turning off your generator, take the time to do so safely. Unplug all appliances before turning off the power of the generator. In order to keep your generator in working order, you'll need to perform regular maintenance.

Purchase a GenerLink transfer switch to SAFELY connect a portable generator to your home



When you have lost power, a portable generator can temporarily provide needed electricity. However, it may present serious hazards if not used properly. A **GenerLink** device eliminates the use of extension cords and other connections that can be hazardous to members and utility personnel. GenerLink detects when a generator is operating and automatically disconnects from the utility grid, eliminating dangerous back-feed.



- The GenerLink is a 200-amp UL-listed transfer switch to safely connect a generator to your home.
- Purchase a generator that can provide the amount of power you expect to need during an outage.
- Beltrami Electric Cooperative's technicians will install the GenerLink device at your electric meter.
- GenerLink allows you flexibility and control to select what you want to run using your home's circuit panel.



For more information and current pricing, contact our Energy Services department today at 218-444-3622.

CLASSIFIEDS

Classified ads rules

- Ads are due by the first of the month prior to publication of the next issue. Example:
 - Ads submitted by July 1 will be published in the August issue.
 - Ads submitted between July 2 and August 1 will be published in the September issue.
- Ads may be submitted via our website at www.beltramelectric.com (preferred).
- Include your name and Beltrami Electric account number on all submissions.
- All ads must be **50 words or fewer** and typed or printed clearly.
- Members may only submit one for sale and one wanted or free ad per issue.
- No real estate, rental, personal or commercial ads will be accepted.
- Ads are published at no charge as space permits on a first-received, first-printed basis, **with no guarantee your ad will appear.**
- Ads are only allowed to be repeated for **three consecutive months** and must be resubmitted each month.
- Editor reserves the right to edit or reject any ad.
- All telephone numbers are presumed to have a 218 area code unless otherwise noted.
- Mail ads to: Beltrami Electric Cooperative, P.O. BOX 488, Bemidji, MN 56619.

For Sale:

Three boxes of teakwood flooring. Scaffolding, used once. Solid oak office chair. Low armless rocking chair. Old Norwegian trunk. Old pottery water bottle. New drill press. Call 651-485-2949.

1987 1710 4WD tractor, \$8,000 firm. 2004 Forester pontoon w/25 hp 4-stroke Mercury. \$5,000 firm. 368-3901.

1991 KZ100 Kawasaki motorcycle. Nice shape. It is a dual purpose, street or dirt. \$700/obo. 701-213-7363.

Birmingham wood burning stove – \$100, Lopi wood burning stove – \$250, Andersen 32" combo storm door, white, left side open – \$50, 6-panel pine closet bi-fold doors (two 36" x 79") \$75, 6-panel pine door/frame (24") – \$50. 763-607-0346.

2016 Wildwood 28DBUD camper. Master bedroom, TV, stainless appliances, spacious slide out, bunk beds, shower and bathtub, wireless leveling jacks, awning w/lights, ball hitch, spare tire, CD player, indoor/outdoor sound system. Lots of storage and cabinets. Sleeps at least 7-8. Very attractive, well maintained camper. Bought new and used very little. Stored every winter indoors. \$15,800/obo. Please call or text Chan 766-9745.

45ACP Brass, needs to be processed/cleaned, 1,000 rounds plus, \$60. Contact Don at 507-356-2276 or donmack6961@gmail.com.

Old pontoon boat, cheap, good pontoons. 45 hp Evinrude. 224-612-3685.

Dock, 20-foot, steel roll-in, 2x6. \$250. Blade grader 7 ft. three-point heavy duty, \$325. 368-2933.

Multi party garage sale: Furniture, lawn mowers, weed whips, shop-vacs, air compressors, over 100 blowtorches and soldering tools to be sold as one collection, vintage glass and bakeware, printer drawers, games, books. July 6. 8 a.m. - 4

p.m. 54262 Memory Lane NE, Waskish. FREE COFFEE and HOMEMADE DONUTS.

1999 John Deere 566 round baler. Makes a 60" wide bale up to 72" diameter/twine tie, with monitor, 8-ply hi-floatation tires, push-bar bale ejection, always stored under a pole barn. Very clean. \$6,500. Serial# E00566X145413. Call 766-3167.

Whirlpool electric range, used less than 5 years, white, good condition. Asking \$170. Call 333-8889 or text 766-5855.

John Deere model 666 3-pt. snowblower, good shape \$950, cash. One old-style H.D. leather jacket, size 44. One U.S.A. leather jacket, size LG, never worn. Call 587-5571 or 537-0595.

1982 Corvette, runs good, white T-top, \$5,900. Stair-stepper, \$20. Hose reel, 100-ft hose, \$30. Wayne 1 hp lawn sprinkler and utility pump, \$75. 586-2534.

2005 G3 Angler V185F 18-ft, 5-in, 4 seats, AM/FM radio, rod holders, full and road covers, depth finders: Eagle Fish Mark 480, Lowrance X125, Yamaha Motors: 150 hp and 8 hp T8, new batteries in 2018. MinnKota electric 65 thrust. 2011 EZ-Loader trailer, disc brakes, swing tongue, PVC load guides, spare tire, \$17,000 for package. 335-2986.

Dimension One hot tub. New heat pump last summer and cover is only a couple years old. New filters and all the chemicals included. It has a small leak so if you're a handyman, it could be an easy fix. Make an offer. 556-8507.

1966 Chevrolet Impala SS Convertible, rust free, straight car. Restoration started. Call for pictures and details. \$11,000/obo. 760-1095.

Beautiful flowers! Local organic flower farmer wants to deliver four weekly bouquets at one monthly price of \$85. Annuals, perennials and herbs. Every bouquet will surprise you! DIYers for special events call too. Call 556-0586.

Antique dark-stained cherry three-shelf bookcase with glass doors and three small enclosed cabinets across the top. 68" H x 42" W x 13" deep. \$700. 759-2099.

Cub Cadet LT 1042 lawn tractor. Bad motor, for parts only. Rest of tractor is in nice condition. \$75. 760-3800.

Women's 26" cruiser bike, single speed, coaster brakes, \$75. 987-2218.

ADCO SFS AquaShed truck camper cover, like new! Fits 8'-10' campers. \$100 firm. 243-3029, leave message.

American Econo Lift Model 20 loader for tractor with forks, \$400. Ford loader for tractor. Insulated tooth saws: 50", 52" and 56". Tractor tire, 18.4x38." 835-6449.

AKC registered Fox-Red shade and Yellow Labs. Come from excellent hunting bloodlines and make fabulous family companions. Text or call 244-7605 for more info.

Porta-Bote (portable fold-up 12-ft boat). Assembles easily into a usable boat with 3 seats and a transom. Outboard motors to 54 pounds may be used. Comes with stainless mounts and tote carries to use on an RV. Great for portaging to remote lakes or to carry on an RV to mountain lakes. Asking \$850/obo. Delivery may be possible. Phone 547-1744.

Auto transmission from 79 LeBaron \$100, left-handed golf club set \$100. 224-2307.

Boss power boat lift electric winch. Used two seasons, in excellent shape, sold lift and buyer didn't need. Key operated, 110-Volt, used on

a Shoremaster lift, but can be used on any lift. List dealer price \$1,025, asking \$500. Pretty firm. 612-868-3807.

2005 Harley Davidson FLHTCUI, red, great condition \$9,800 or make offer. Alumacraft F14S 14' fishing boat, 5 hp motor, MinnKota trolling motor 35, 2 batteries, fish locator, Lowrance 4 depth finder, oars, trailer, \$2,500, or make offer. Call John at 224-3186.

930 Case Comfort King tractor, good motor and tranny, tires 80%. Quit farming. No reasonable offer refused. 751-5667.

Craftsman 10" portable table saw, 12" band saw, 4,000-watt Coleman generator. Call 368-1942.

Hoyt compound bow, 40-50 lb, 2 releases, 33 carbon arrow, soft case, 2 quivers, 3 fletching jigs, misc. items. \$350. Call Don at 760-2254.

Old Wards wood stove. 5-gallon cream can. Old spittoon. 751-0863.

1975 Ford pickup, ¾-ton Super Cab, long box, auto transmission, 2 fuel tanks. One owner, all offers considered. 760-9001.

Jet 6" jointer, ¾-hp motor and factory stand, \$175. Craftsman contractor series 12½" planer/molder, \$325. Both in very good condition. Cash only. 835-6247.

14-ft Wenonah fiberglass canoe. \$400. 444-9166, leave message.

14-ft Alumacraft fishing boat, original owner. Includes oars and anchor, no trailer. Best offer takes it. Call 308-1085, leave message.

Craftsman wet/dry 16-gallon, 6.5 hp shop vac., \$50. Electrolux canister vac. cleaner, \$75. John Deere lawn mower, 6.75 hp OHV, \$50. Oak coffee table, \$45/obo. Oak dining set w/6 chairs, \$650/obo. 444-4744.

2005 Chrysler Town & Country, 3.8 V6, 145K, stow and go seats, new intake gaskets, radiator, front brakes, high-pressure power steering line. \$2,250/obo. Brute pressure washer, Honda 160 motor, with new pump, \$300/obo. 444-9422.

Wanted:

Low mileage SUV with AWD or 4WD in good condition. Price range under \$10,000. 751-7693.

RV trailer w/ramp in back, quadriplegic son with Duchenne muscular dystrophy needs room for special bed, with kitchen, generator for breathing machine and charging batteries. It would be nice to take him some place other than hospitals. I can modify trailer, but need the ramp (wheelchair 400lbs). 224-2959.

500-gallon propane tank. 835-4783.

Carousel slide projector. 766-6081.

Will pet sit at your home or mine. 766-6510, leave message.

We are looking for you!

Beltrami Electric is looking for **Rachelle L. Mitchell** (Bemidji, Minn.). Please call **218-444-2540** if you have any information.

Happy 4th of July!

Beltrami Electric will be closed Thursday, July 4, in observation of Independence Day.

BLACKDUCK WOODCARVER'S FESTIVAL

July 27, 2019 | 9 a.m. to 4 p.m.

Blackduck Wayside Rest

RAIN OR SHINE!

FOOD, FUN, CRAFTS, WOODCARVINGS

FREE ENTRY

Get more out of a modern cooling system.

Get year-round comfort.

Get top-notch efficiency.

GET AIR-SOURCE HEAT **PUMPED**.



Air Conditioner

Cooling during warm summer days

Absorbs inside heat and expels it from your home, then creates chilled air to push back into your home

Wall units **lack efficiency**, as they only provide spot cooling and air can leak through window seals. Central air units are comparable to ASHPs in summer

- Smaller upfront cost, but does not offer heating
- No installation rebates offered

VS



Air-Source Heat Pump

Up to **\$500/ton** in rebates!

CAN I USE IT YEAR-ROUND?

✓ **Heating and cooling** through every season

IS IT VERSATILE?

✓ Works like an air conditioner in the summer, but offers the **versatility** of the reverse process to heat your home in the winter

IS IT EFFICIENT?

✓ **Super energy efficient**, as the unit moves both cooled and heated air throughout the home

CAN I SAVE MONEY?

- **Large rebates** available for unit installation
- **Sustained savings** through energy efficiency

Bonus Winter Benefit:

Electric ASHP heating is **much more efficient** and **cost-effective** than fuel heat technology, delivering up to three times more energy than the electricity it uses.

PUMP UP YOUR SAVINGS WITH AN AIR-SOURCE HEAT PUMP!

Contact our Energy Experts at **800-955-6083** for more information.

BOARD MEETING HIGHLIGHTS

Beltrami Electric's board of directors conducted its regular monthly meeting Wednesday, May 29, 2019. A quorum of directors was present.

The following reports were given:

- President and CEO Echternach presented changes to service standards of the cooperative and made his monthly report, including the April financials, employee updates, auditor services and legislative issues affecting the electric industry.
- Arlene Hogquist gave the financial and statistical report and reviewed work orders for April. The first quarter Balanced Performance Scorecard was reviewed. She also presented the long-range financial forecast for the cooperative.
- Jamie Overgaard, Minnkota Power, presented the Integrated Resource Plan.
- President and CEO Echternach presented several required documents of CoBank and Security Bank USA of Bemidji.
- Chair Coe appointed Jared Echternach as the delegate to the National Cooperative Services Corporation (NCSC).
- Directors and the president and CEO shared highlights of meetings attended on behalf of the cooperative and discussed upcoming meetings, educational classes and conferences.
- The regular board meeting in July was rescheduled to July 24, 2019, and the regular board meeting in December was rescheduled to December 18, 2019.

The following actions were taken:

- Approved the consent agenda.
- Approved the Integrated Resource Plan.
- Approved authorized signatures on all required CoBank and Security Bank USA forms as necessary.
- Approved revised BEC Financial Policy 201.

The next regular board meeting will be Wednesday, July 24, 2019.

Welcome Beltrami Electric Cooperative's new hires



Ed Dreher

Ed Dreher joined Beltrami Electric's mechanic shop in February. Ed graduated from Northome High School and attended Hibbing Vocational-Technical College, specializing in heavy equipment repair. Ed has extensive experience working on a variety of equipment and will be responsible for servicing and maintaining the cooperative's fleet, including pickups, trucks, heavy equipment and more. Ed enjoys spending time outdoors, hunting, fishing and snowmobiling in the winter. Ed lives in Bemidji with his wife, Katherine. Welcome, Ed!



Dustin Steigauf

Dustin Steigauf recently joined Beltrami Electric as a tree trimmer/groundman with our operations department. Dustin will work with crews to assist in clearing distribution lines of trees and brush, along with aiding members in safely removing trees near overhead lines that run to their homes and meters. Dustin grew up in the Bemidji area, graduating from Bemidji High School. He attended the University of Minnesota-Crookston where he received a degree in Natural Resources Management. Dustin enjoys hunting, fishing, trapping and spending time with his family. Dustin lives north of Bemidji with his wife, Megan, and daughters. Welcome, Dustin!



Beltrami Electric Cooperative Inc.

Your Touchstone Energy® Cooperative 

4111 Technology DR NW
PO Box 488
Bemidji, MN 56619-0488
218-444-2540 • 800-955-6083
www.beltramielctric.com

Unclaimed capital credits list

These former members may contact Beltrami Electric Cooperative by calling the office at 218-444-2540 or 1-800-955-6083 or via email at info@beltramielctric.com.

AAKER, RANDY, PACE, FLA.
ABDELKHALEQ, BASSAM, BLACKDUCK, MINN.
ADAMS, GUY E., PLYMOUTH, MINN.
ADKINS, KEVIN, LAKEVILLE, MINN.
ALBRECHT, HERBERT N. JR., BEMIDJI, MINN.
ANDERSON BIRGIT, BEMIDJI, MINN.
ANDERSON SARAH, CROOKSTON, MINN.
ANDERSON SARAH, CROOKSTON, MINN.
ANDERSON GARY E., BEMIDJI, MINN.
ANDERSON, LEONARD E., HOLMEN, WIS.
ANDERSON SARAH, CROOKSTON, MINN.
ANDERSON, SCOTT, WALKER, MINN.
ANYWAUSH, DAVID, COLUMBIA FALLS, MONT.
ARNEBERG ESTATE - MARY J., CORYTON, TENN.
ARNOLD, JOSEPH, LA GRANGE PARK, ILL.
ASHBY, WILLARD E., BEMIDJI, MINN.
BACKMAN ESTATE - VANETTA R., WALKER, MINN.
BACKMAN, JOHN, BEMIDJI, MINN.
BACON, AL, LANCASTER, CALIF.
BARR, M. D., ROGERS, ARK.
BARSCH ESTATE - RONALD, LONGVILLE, MINN.
BARTA ESTATE - GEORGE H., BELLEVUE, NEB.
BARTLEY, FRANCIS R., GREELEY, COLO.
BECK ESTATE - HARVEY L., MESA, ARIZ.
BEISWENGER, TIMOTHY R., HILLSBOROUGH, N.C.
BELT ESTATE - VERA, MORTON, MINN.
BENDIX AUTOMOTIVE SYSTEMS, SOUTH BEND, IND.
BENSON ESTATE - JOSEPH, GLENWOOD, MINN.
BERG, GREGORY A., OLATHE, KANS.
BERGE, NORMAN R., SOLDOTNA, ALASKA
BERRETH, ALBERT J., PIERRE, S.D.
BLACK, NOVEMBER, GUTHRIE, MINN.
BODLUND, ROBERT, MCHENRY, ILL.
BOWSTRING ESTATE - THOMAS, CASS LAKE, MINN.
BRACE ESTATE - DEBRA M., COTTAGE GROVE, MINN.
BROUILLARD ESTATE - MICHAEL J., BEMIDJI, MINN.
BROWNE ESTATE - JAKE L., BEMIDJI, MINN.
BRYANT, KATHALENE M., CROSBY, TEXAS
BURNETTE, RANDALL E., BEMIDJI, MINN.
CALDWELL ESTATE - ETHA, CASS LAKE, MINN.
CALHOON ESTATE - HELEN; COREY, LAPORTE, MINN.
CARLSON, ELIZABETH, WILLMAR, MINN.
CAVE ESTATE - CAROL, LADYSMITH, WIS.
CHRISTENSON ESTATE - MAYNARD O., SAINT PAUL, MINN.
CIELINSKI ESTATE - JERRY, WHEELING, ILL.
CIROCCO, CAROL J., LINDSTROM, MINN.
CLARK ESTATE - DAVID A.; ANN CLARK, BECIDA, MINN.
CLOUD, ALFREDA, PONEMAH, MINN.
COCHRAN, KEITH L., SHEVLIN, MINN.
COMSTOCK ESTATE - DELPHA, THIEF RIVER FALLS, MINN.
COOK, WAYNE A.; COLLEEN M., BAXTER, MINN.
CORNELIUS, MICHAEL, ADA, OKLA.
CRAMER, JESSIE M., BEMIDJI, MINN.
CRAMPTON, SCOTT; TAMMY MOEN, BEMIDJI, MINN.
CUTBANK STARR, ANGELA; LAWRENCE D., STARR, CASS LAKE, MINN.
DADCO FOOD PRODUCTS, EAU CLAIRE, WIS.
DAUGHERTY ESTATE - DANIEL R., BEMIDJI, MINN.
DAVIS ESTATE - MAURICE, HACKENSACK, MINN.
DEER COUNTRY, INC. - EILEEN LINDSEY, NISSWA, MINN.
DELORME, GREGORY R. SR., BURNSVILLE, MINN.
DENICE, JOHN J. JR., HICKSVILLE, N.Y.
DOW, LINDA S., FARMINGTON, MINN.
DROWN ESTATE - VIRGINIA L., MINNEAPOLIS, MINN.
ECK, DEBBIE, GONVICK, MINN.
EDWARDS, SCOTT R., GRANITE FALLS, MINN.
ELSNER ESTATE - IMOGENE, MINNEAPOLIS, MINN.
ENGEL, JOEL, HANOVER, MINN.
ERICKSON, JEFFREY A.; JEANNETTE, HINES, MINN.
EVANS, ROY, BRAINERD, MINN.
FABER, GERALD A.; JEANNETTE, ORR, MINN.

FAIRBANKS ESTATE - CHARLES S., BEMIDJI, MINN.
FAIRBANKS, MICHELLE, REDLAKE, MINN.
FISHER ESTATE - HERBERT; JEANNETTE L., WALKER, MINN.
FLINT ESTATE - DAWN J., BEMIDJI, MINN.
GEVING ESTATE - ROBERT L., BEMIDJI, MINN.
GILMORE ESTATE - DANIEL A., CATHEDRAL CITY, CALIF.
GLADEN ESTATE - EBBA L., JUNEAU, ALASKA
GOHL, LYNDY, MONROE, WASH.
GOKEN, CAROL J., DYSART, IOWA
GOODWIN ESTATE - KATHERINE, CASS LAKE, MINN.
GOTTHELF ESTATE - HARRY E., WAYZATA, MINN.
GRAVES ESTATE - RHONDA S., DETROIT LAKES, MINN.
GREENLEAF ESTATE - PETER, BEMIDJI, MINN.
GREENLEAF, JENNIFER L., BEMIDJI, MINN.
GROEHLER ESTATE - NORMAN A., KELLIHER, MINN.
GROSZ, JON D., BEMIDJI, MINN.
GUENTHER, SUSAN, MCINTOSH, MINN.
GUSTAFSON, MICHAEL J., BEMIDJI, MINN.
HAMILTON, LAWRENCE, KELLIHER, MINN.
HEAD, GREGORY J. SR., REDBY, MINN.
HEGLAND SIGN CO., BEMIDJI, MINN.
HEIKKILA ESTATE - ALBERT, BOVEY, MINN.
HESS, TODD M., INVER GROVE HEIGHT, MINN.
HIGMAN, BRIAN K., KINGSTON, WASH.
HOLMGREN, STEVE C.; TARA L. GRASS, BLAINE, MINN.
HOOF, PAM, FARGO, N.D.
HORN ESTATE - CHIC, TEQUESTA, FLA.
HUTTO ESTATE - FREDDY L., BLACKDUCK, MINN.
IPIPSCH ESTATE - BETTY, CHAMPLIN, MINN.
JACIUS, GUY, PALOS PARK, ILL.
JACKSON ESTATE - RENAE L., GRAND RAPIDS, MINN.
JOHNSON, BEN E., OWATONNA, MINN.
JOHNSON ESTATE - DENNIS D.; MAUREN P., DURANGO, COLO.
JOHNSON ESTATE - HELEN A., PARK RAPIDS, MINN.
JOHNSON ESTATE - LARRY W., OAK GROVE, MINN.
JOHNSON ESTATE - LOWELL E., BEMIDJI, MINN.
JOHNSON, TIMOTHY R., FARMINGTON, MINN.
JONES, REX L., WINDOW, MINN.
JONES, WILLIAM E. SR., BEMIDJI, MINN.
JOURDAIN ESTATE - BERNICE, REDBY, MINN.
JUDD, JANICE C., SAINT PAUL, MINN.
KAICHEN, MARK D., PARAMOUNT, CALIF.
KAVANAGH, KENT, BEMIDJI, MINN.
KEARNEY, LARRY W., JANSEN, NEB.
KEELEY, WILLIAM A.; DEB K., BEMIDJI, MINN.
KELTO ESTATE - DELBERT G., ROCHESTER, MINN.
KERN, LINDA D., BEMIDJI, MINN.
KIELTY, F. W., GRAND FORKS, N.D.
KLASEN, LAUREL A., BEMIDJI, MINN.
KLEVEN, LEONARD R., THE VILLAGES, FLA.
KNAEBLE ESTATE - ERLING, BLACKDUCK, MINN.
KNOX, DUWAYNE, BEMIDJI, MINN.
KOBES, RONALD, BLACKDUCK, MINN.
KOEHLMOOS, GREGORY E., CONCORD, CALIF.
KRAMER ESTATE - EVELYN B., WILTON, MINN.
KREBES ESTATE - JOHN P., ALGONQUIN, ILL.
KUHRKE, JOHN T., MONTICELLO, KY.
LAGRAVE ESTATE - FRANK W., BEMIDJI, MINN.
LANG, MIKE L., CASS LAKE, MINN.
LARSEN, ROBERT, AUBERRY, CALIF.
LARSON BRIAN E., BACKUS, MINN.
LAVALLEE, LORENE, BEMIDJI, MINN.
LEUCH, RICHARD E., CINCINNATI, OHIO
LINDAHL, DORIS M.; T. SCHLINK, LAPORTE, MINN.
LUEKEN, JUDY L., BEMIDJI, MINN.
LUTGEN, TAMMY; GLENN JR., RHOME, TEXAS
M O CHRISTENSON, INC., WALKER, MINN.
MARION, LOUIS, KENT, OHIO
MASON, MARK, BIG LAKE, MINN.
MATHIASON, ELMER, GRAND FORKS, N.D.

MATTFIELD, HOWARD A. JR., PAVILLION, WYO.
MCCARTHY, MAUREN, MINNEAPOLIS, MINN.
MCCARTNEY, TIMOTHY J.; CATHERINE E., BEMIDJI, MINN.
MCGRAW ESTATE - GAIL, REDBY, MINN.
MCKENNETT, RODNEY, CASS LAKE, MINN.
MERGENS, PAMELA A., ROCHESTER, MINN.
MIDWEST CABLE COMM, INC., BEMIDJI, MINN.
MILLER, WILLIAM M., WALKER, MINN.
MILLS, JEANEN, WOLSEY, S.D.
MILLSAPS, DAVID L., WALKER, MINN.
MOE, ROY M., OLYMPIA, WASH.
MONDT, GORDON E., BEMIDJI, MINN.
MORGAN, CHRISTINA M., CASS LAKE, MINN.
MORROW ESTATE - MARILYN A., CASS LAKE, MINN.
MORROW ESTATE - MARILYN A., CASS LAKE, MINN.
NATHE, STEVEN H., VILLA PARK, ILL.
NEADEAU ESTATE - ALVIN, REDBY, MINN.
NEADEAU ESTATE - MYRON D., REDLAKE, MINN.
NEHASIL ESTATE - JAMES, CARBONDALE, COLO.
NELSON, DONALD C., BEMIDJI, MINN.
NELSON ESTATE - PAUL A., SUPERIOR, WIS.
NELSON, JOHN; LARRY HANSON, MCINTOSH, MINN.
NELSON, JUDITH M., CASS LAKE, MINN.
NENNIG, NICK, GRAND JUNCTION, COLO.
NERUD, ELAINE M., WALKER, MINN.
NESS, FREDERICK K., NEMO, S.D.
NOETZELMAN, WARREN, BEMIDJI, MINN.
OAKGROVE ESTATE - JULIUS B., HARLINGEN, TEXAS
OBRIEN, JOSEPH J., AITKIN, MINN.
OHOTTO ESTATE - LILLIE M., CAMBRIDGE, MINN.
OLSON, DENELL, BEMIDJI, MINN.
OLSON, JAMIE W., TENSTRIKE, MINN.
OLSON, KENNETH R., WAUKON, IOWA
OLSON, REBECCA L., SARTELL, MINN.
OTTERKILL, NORMAN D., BAGLEY, MINN.
OVERBEEK ESTATE - JEANNETTE, BEMIDJI, MINN.
PARANT, JUDITH, WORTH, ILL.
PEACOCK, THOMAS D., CASS LAKE, MINN.
PEDERSON, RONALD H., BEMIDJI, MINN.
PEMBERTON, JOHN C., CASS LAKE, MINN.
PEOPLES NATURAL GAS, BEMIDJI, MINN.
PETERSEN, LEE F., WACONIA, MINN.
PETERSEN, TIMOTHY M., CORONA DE TUCSON, ARIZ.
PETERSON, DUANE C., OWOSSO, MICH.
PETERSON, RAYMOND, BURNET, TEXAS
PHILLIPS, RICHARD D., SNOHOMISH, WASH.
POLLEX, DEBBIE, BLACKDUCK, MINN.
POWELL, KRISIE D., ELK RIVER, MINN.
QUADERER, BRANDYCE, BEMIDJI, MINN.
RAINVILLE ESTATE - JAMES T., SUN CITY, ARIZ.
RATZLAFF, DAWNETTE, BEMIDJI, MINN.
REICHERT DONN; LOREN, BOWSTRING, MINN.
RIVERS, PATRICK J., LAKELAND, MINN.
ROBERTSON, STEVE S., BEMIDJI, MINN.
ROCKMAN, TAMMY L., JORDAN, MINN.
ROWLEY, SHARON, PUPOSKY, MINN.
RUBIN, KRISTINE L.; PATRICK OSHEA, BRAINERD, MINN.
RUPP, DAVID, JUNEAU, ALASKA
SAZESH, JULIE, LENGBY, MINN.
SCHARRER, MICHAEL, DETROIT LAKES, MINN.
SCHMIDT, STEVEN W., BLOOMER, WIS.
SCHNEIDER, LOIS A., MAPLEWOOD, MINN.
SCHOENBORN, BRYAN, REDLAKE, MINN.
SCHULTZ, JOHN, MINNETONKA, MINN.
SCHULTZ, JOHN J., WAUBUN, MINN.
SEELYE, TRACI; DEER RIVER, MINN.
SEIDEL ESTATE - LEROY, SAINT PAUL, MINN.
SHEPPARD, ROBERT C., LORADO, W.VA.
SHOUGH, DEBORAH K., BREMERSTON, WASH.
SICKEL, GLENN A., SAINT LOUIS, MO.

SKOW, STEVE, WILLISTON, N.D.
SLONE ESTATE - CATHY, BEMIDJI, MINN.
SMITH, ANITA S., BEMIDJI, MINN.
SMITH, DANA B., NEW ULM, MINN.
SMITH ESTATE - WALTER J.; ANTOINETTE L., WOODBURY, MINN.
SMITH, FRANCIS D., SHOREVIEW, MINN.
SMITH, JEFFREY A.; ESTHER S., PUEBLO, COLO.
SMITH, KAREN S., REDLAKE, MINN.
SMITH, LOUISE, NEVIS, MINN.
SMITH, RICHARD W., BEMIDJI, MINN.
SMITH, WILBERT A., BAXTER, MINN.
SOKALSKI ESTATE - LILLIAN I., MENASHA, WIS.
SOLI, KATHY, BEMIDJI, MINN.
SORENSEN, PALMER A.; GEORGENE M., CHANHASSEN, MINN.
SPEARS, CAROL J., REDLAKE, MINN.
STANGEL ESTATE - JERRY A., BENA, MINN.
STAPLES, EILEEN, ROSCOE, MINN.
STEINER, MARK, WALKER, MINN.
STEINMETZ, DAVID T., BEMIDJI, MINN.
STENSLAND, KEVIN, CASS LAKE, MINN.
STODDARD, ALVIN L., SHAWNEE MISSION, KANS.
STOKES, JOSEPH P., GILFORD, N.H.
STOREY, KIM, BEMIDJI, MINN.
SULLIVAN, JACK W., SAINT PAUL, MINN.
SWAFFORD, ROBERT H.; REBECCA, BEMIDJI, MINN.
SWANSON ESTATE - ARTHUR B.; DONNA L., CASS LAKE, MINN.
SWANSON, JOHN C., NAPLES, FLA.
SWINHART ESTATE - RODNEY A., SQUAW LAKE, MINN.
TANGEN, ARLIN D. JR., BEMIDJI, MINN.
TEPLEY, TAMMY J., BEMIDJI, MINN.
TEW ESTATE - DONALD, SOLWAY, MINN.
THOMAS, ROGER, BEMIDJI, MINN.
THOMAS, STEVEN L.; KIMBERLY G., CASS LAKE, MINN.
THOMPSON, FRANK R., PARK RAPIDS, MINN.
THOMSON ESTATE - ROBERT P., BEMIDJI, MINN.
THORSON, GERALD, BEMIDJI, MINN.
TILL, DARYL, CASS LAKE, MINN.
TIMMERMAN, TIM W., NORTH PORT, FLA.
TROSHYNSKI, THOMAS, POCATELLO, ID
VANZO, ROBERT L.; BEVERLY A., VENETA, ORE.
VILLAGE LIVING, LLC., WAVES, N.C.
VILLEBRUN, WILLIAM, CASS LAKE, MINN.
WALKER, D. AND P., BALDWIN, WIS.
WALLACE, MARK, SAINT PAUL, MINN.
WALSTAD, LEE, LAPORTE, MINN.
WEBB, WILLIAM A., BEMIDJI, MINN.
WEBER, JIM, BEMIDJI, MINN.
WEISE, BRAD, KELLIHER, MINN.
WHALEN, ROBERT, HAMILTON, MONT.
WHEELER, JUDY H., BILOXI, MISS.
WHITE, AGNES J., MINNEAPOLIS, MINN.
WHITEHOUSE ESTATE - MURIEL L., FALLS CITY, NEB.
WICKLUND, KELLY J., BEMIDJI, MINN.
WIDMAN, FLORIAN E., CLEARWATER, MINN.
WILLERT, HOWARD A.; KATHRYN A., BLAINE, MINN.
WILLIAMS ESTATE - CLYDE, EDEN PRAIRIE, MINN.
WILLIAMS, GEORGE H. JR., BEMIDJI, MINN.
WILLIAMS, RICHARD E., BEMIDJI, MINN.
WILSON, BARBARA, GROVE CITY, MINN.
WILSON ESTATE - CHARLES R.; BARBARA, SURREY, N.D.
WILSON, ROY L., NOKOMIS, FLA.
WITTNER, RANDY C., CASS LAKE, MINN.
WOLFGARTH, HERBERT, BEMIDJI, MINN.
WOLFGRAM, LLOYD, RED WING, MINN.
WOLFE, THOMAS, LA CROSSE, WIS.
WROBEL, ANDREW J., DELAVAN, WIS.
WRW, INC. - WAYNE ECKSTEIN, BEMIDJI, MINN.
YOCUS, KRIS M., MESA, ARIZ.
YOUNG, KORY; MERRY D. CHARLES, MESA, ARIZ.
ZAWADSKI, KATHY M., WALKER, MINN.