

# NORTHERN

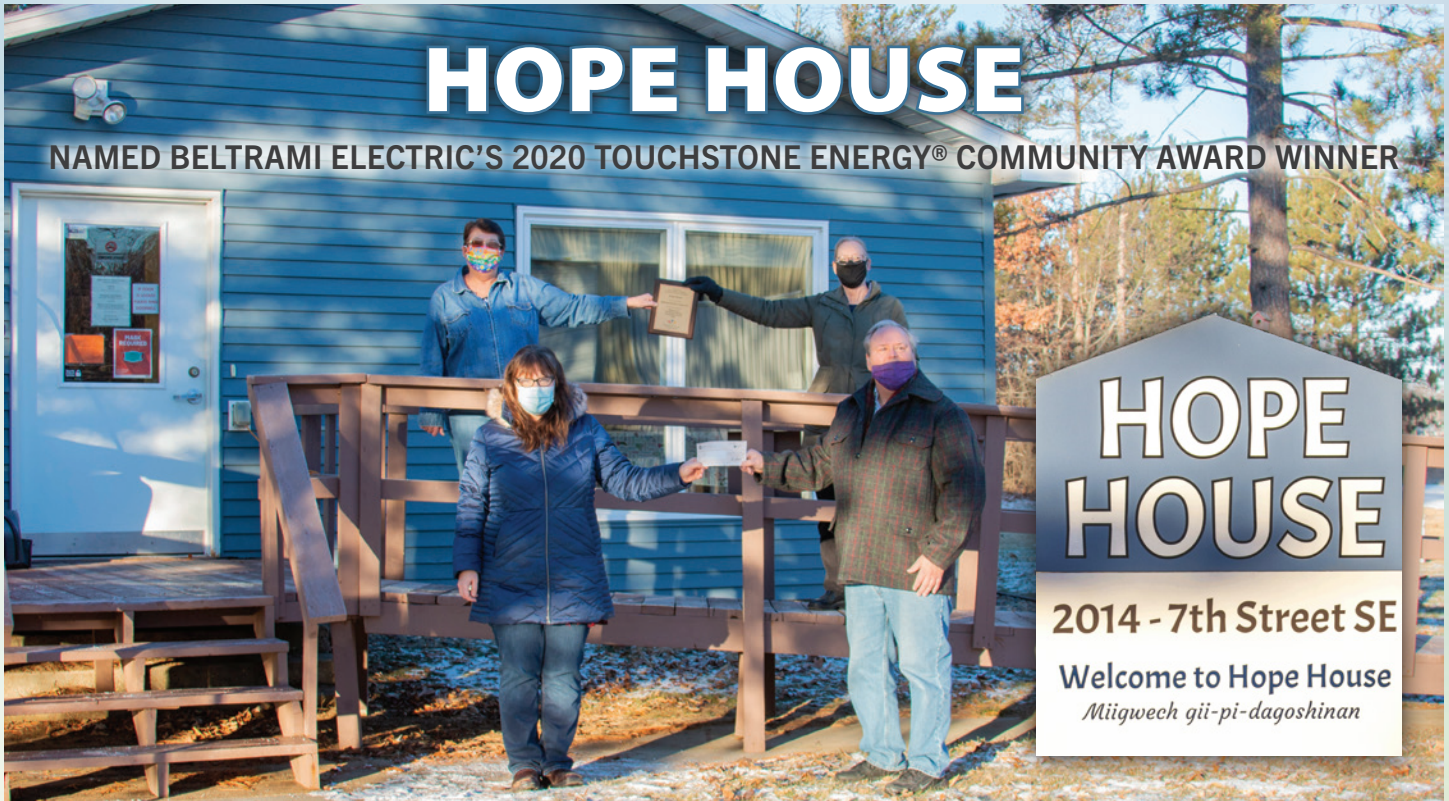
## L I G H T S



**Beltrami Electric  
Cooperative Inc.**

® Your Touchstone Energy® Cooperative 

January 2021



Accepting the local 2020 Touchstone Energy® Community Award for Hope House – Front: Katrina Pink, ARMHS worker; Jim Aakhus, board member. Back: Jody Yerbich, secretary/activities coordinator; Robin Wold, director. Not pictured are staff members Joe Cook, Brenda Epeneter and Stephanie Chupp; board members Missy Bohlman, Dave Johnson, Jeanne Thompson (board chair) and Louis Erdrich.

Beltrami Electric Cooperative has selected Hope House as the winner of the local 2020 Touchstone Energy® Community Award from a pool of excellent and worthy nominations. The award recognizes Hope House for showing a strong commitment to our community and comes with a \$500 cash award and an engraved Touchstone Energy® Community Award plaque.

Hope House is a nonprofit organization that helps people with long-term or serious mental illness regain their lives. As a drop-in center, Hope House provides diagnostic assessments, Adult Rehabilitation Mental Health Services (ARMHS), one-to-one assistance, skills training, social

support, family support, medication management, employment specialists and outreach.

Established in 1980, Hope House has served nearly 1,000 people with long-term mental illness, most of whom now no longer need the services because they are doing well in the community. Prior to Hope House, most clients were hospitalized – now 90-95% remain hospital-free, 98% have stable housing and 80-85% have no problems with drugs or alcohol.

“We are honored to receive Beltrami Electric’s 2020 Touchstone Energy Community Award,” said Robin Wold, Hope House director. “To be selected reminds us that our daily

work is having a noticeable impact for people with mental illness within our community. We are humbled to be included with the great past and future organizations who have and will receive this award. Thank you, Beltrami Electric board, staff and members!”

The efforts of Hope House have seen a ripple effect, providing stability not only for their 100-150 clients each year, but reaching extended family and friends, as well as our community. Hope

~ *article continued on page 7*

**Plug in ... and plow out – page 4**  
**Power through the pandemic – page 5**

## Northern Lights (USPS 016488), Vol. 68, No. 1

Northern Lights is published monthly by Beltrami Electric Cooperative Inc., 4111 Technology Drive N.W., Bemidji, Minnesota 56619-0488. Subscription rate \$5. Periodicals postage paid at Bemidji, MN 56601.

**Postmaster:** Please send address corrections to Beltrami Electric Cooperative Inc., P.O. Box 488, Bemidji, Minnesota 56619-0488.

**Office Hours:** 8 a.m. to 4:30 p.m.  
Monday – Friday

**Member Service:** 218-444-2540  
or 1-800-955-6083

[www.beltramielectric.com](http://www.beltramielectric.com)

### Board of Directors

Chair	John Lund, DISTRICT 7
Vice Chair	Sue Kringen, DISTRICT 8
Secretary	Murl Nord, DISTRICT 1 (Square Butte Director)
Treasurer	Judy Honer, DISTRICT 9
Directors:	Charlie Perkins, DISTRICT 2; Charles Parson, DISTRICT 3; Craig Gaasvig, DISTRICT 4; Robert Wallner, DISTRICT 5; Rick Coe, DISTRICT 6 (Minnkota Director)
President and CEO	Jared Echternach
Editor	Angela Lyseng

### Minnesota State Electrical Inspectors

*Beltrami County*

**Wade Koons**

218-255-3011 - [wade@kooninspections.com](mailto:wade@kooninspections.com)

*Cass and Hubbard Counties*

**Anthony Kohrs**

218-255-1046 - [kohrsinspection@paulbunyan.net](mailto:kohrsinspection@paulbunyan.net)

*These are the inspectors covering the area served by Beltrami Electric. They can be reached by phone Monday through Friday between 7 and 8:30 a.m. or by email as indicated.*

**Gopher State One Call 811**  
1-800-252-1166 or 811  
[www.gopherstateonecall.org](http://www.gopherstateonecall.org)

Anyone who plans to dig is required by law to notify the state of their intentions at least 48 hours in advance.

All digging requires the 48-hour notification so that buried telephone lines, television cables, pipelines, utility electrical lines, and municipal water and sewer lines can be located to ensure that none will be severed or damaged.

### Mission of Beltrami Electric Co-op

*To provide excellent value to our members through the safe delivery of reliable electric service, excellent member service and innovative energy solutions at fair and reasonable prices.*

*This institution is an equal opportunity provider and employer.*



## Good, yet challenging year

Jared Echternach, *President and CEO*

### A good yet challenging year

Your cooperative had a good yet challenging year in 2020. We finished the year financially sound, we completed the final year of our four-year construction work plan and crews constructed 275 new services and performed nearly 70 service improvements for our membership as your cooperative continues to grow. We experienced modest service growth in 2020 yet decreased energy sales.

We were fortunate to avoid major storms in 2020, and of the outages we did experience, our crews did an outstanding job restoring power safely and quickly. In addition, our employees helped members access more than \$2 million in assistance program funds to help with their electric bills. All of this was done while operating during a pandemic, which placed hardships on many of our members. Your board of directors authorized an early capital credit retirement in June to help members during the pandemic.

I'm very proud of our employees for all they accomplished in 2020, for their dedication to serving our members, and most importantly, for their commitment to safety.

### Budget approved – rates stable

Your board of directors approved the 2021 budget last month with no rate increase planned for 2021. This is the third consecutive year rates have remained stable as your board and employees work hard to control internal costs for our members.

This year will be another busy year for your cooperative, with projects scheduled for Moose Lake, West Windigo Drive, Beltrami County Road 403, Red Lake and Puposky. We expect to build another 250 new services and perform 75 system improvements.

### Strategic plan

Your board and employees will continue to deliver on our strategic plan, focusing on four strategic themes, including:

- Enhance Beneficial Electrification to Control Costs
- Increase Positive Member Engagement
- Leverage Technology for the Benefit of Our Members
- Continue to Improve Our Safety Culture

### Touchstone Energy® Community Award

Congratulations to Hope House on winning our local Touchstone Energy® Community Award. Their dedication to helping those in need is simply remarkable, and we're pleased to recognize them in some small way for all they do for families in our area.

### What can you get for \$1?



### 96 hours of television on an LED TV

Your electricity is a bargain. Did you know you can watch 96 hours of movies on your LED TV using just \$1 of kilowatt power? That means the latest flick on your list could cost less than TWO CENTS to stream! Pop some more popcorn and enjoy your evening of inexpensive entertainment.





# Electric cooperatives prepared for MN legislative session

COVID-19 response, budget issues to be addressed

**A**s the 2021 Minnesota legislative session begins, there is no question that lawmakers will be focused on dealing with the effects of the COVID-19 pandemic as they negotiate a new relief package.

Compromise will be the key strategy as Minnesota has the only divided legislature in the country. Gov. Tim Walz (DFL) will need to work with the DFL-controlled House and the Senate, which holds a Republican majority.

Political engagement is embedded in the history of electric cooperatives. It has often been said that electric cooperatives were born in politics. Over the years, Beltrami Electric Cooperative has partnered with other electric cooperatives around the state to develop an effective grassroots political outreach program to ensure member voices are heard on important energy issues.

Here are three priorities that Beltrami Electric Cooperative will be pursuing during the 2021 legislative session.

## **Advocate for ECO act**

Electric cooperatives are encouraging passage of the Energy Conservation and Optimization (ECO) act, which modernizes and reforms the state's outdated Conservation Improvement Program (CIP).

Minnesota's current CIP regulations, which were established in 2007, require utilities to reduce electricity usage by 1.5% annually and spend 1.5% of gross operating revenues doing so. The program does not recognize the benefits of efficient electrification of end-use processes, such as the adoption of electric vehicles and other emerging technologies. The ECO act emphasizes end-use total energy efficiency rather than narrowly focusing on reducing electricity use. Members will still see great programs to help them install new electric technologies, save money and use energy wisely.

## **Address load control receiver requirements**

Load management equipment allows utilities to reduce demand for electricity during peak usage times,

which reduces the cost for consumers and provides environmental benefits. The Department of Labor and Industry (DOLI) now requires electric co-ops to file a permit and be subject to inspection each time they replace a load control receiver, even though co-ops were not required to do so in the past. While DOLI has agreed to lower the cost of the permit to \$20 (from the original \$36) and has also agreed not to require permits for some installs, the new fee will be cost prohibitive and could put cooperatives' load management programs at risk.

## **Monitor Clean Energy First and carbon-free energy proposals**

Electric cooperatives will be closely monitoring potential legislation that would require 100% of a utility's generation portfolio to be carbon-free and other standards that would dictate that utilities must select carbon-free resources before any other resources. Any decisions regarding the energy transition must include electric cooperatives and take into account technological capabilities, reliability and affordability.





## Add an electric snow blower to your winter tool kit

Your new partner for fighting Minnesota winters is light, compact, quiet and low maintenance – but packs a punch after a snowfall.

Electric snow blowers are becoming a sought-after option for those who want to quickly and easily clear driveways and sidewalks without the need for hauling a gas can. With an all-electric corded snow shovel or cordless snow blower, homeowners can avoid the common challenge of storing a gas-powered machine with the fuel still in the tank. Justin Johnson, store manager of Ace on the Lake in Bemidji, says his team has seen consumers start to purchase the electric option to avoid having to worry about maintenance like they do for the gas-powered options.

There are many electric models on the market and Ace on the Lake carries the EGO™ brand, which offers a nice 5-year warranty. “Our most popular model so far is the EGO™ 56-volt Power+ Single-Stage Snow Blower, which provides a 21-inch clearing width and features two bright LED lights on the frame,” Johnson said. “Plus, the EGO 56-volt batteries are compatible with other EGO equipment, such as a leaf blower, chainsaw, lawn mower and trimmer/edgers.

“This is our second season carrying EGO™ electric snow blowers,” he said. “The single-stage snow blower has been popular due to its light weight and being portable enough to carry onto a deck or patio, or even clear off a roof. We are

excited to see the new two-stage option this year, which is heavily built and features a self-propelled, variable-speed auger. Both models are brushless, which increases their power and longevity.”

EGO™ is the industry’s first cordless snow blower with the power and performance of gas but without the noise, fuss and fumes. Because of their efficient construction, electric snow blowers are incredibly easy to store when garage space is limited. Their smaller size often gives them a lower available clearing width and intake height than their gas counterparts, but that doesn’t mean they can’t get the job done.

Cordless snow blowers run on a powerful rechargeable battery and the corded snow shovels are fitted with an extension cord that remains flexible in the bitter cold. Both options ring up a smaller “fuel” bill than a gas blower and don’t require the same annual service maintenance. The biggest question he has received is regarding estimated run time, which varies on many factors such as depth and density of snowfalls. He encourages consumers to do their research on the many options available to find a unit that will fit their needs.

### Popular electric snow blower models (courtesy of Ace on the Lake-Bemidji)



**EGO™ Power+ 56-Volt Single-Stage Snow Thrower (\$599.99)**

- 21-inch clearing path
- 35-foot throwing distance
- Includes (2) 5.0 Ah 56V ARC Lithium Batteries and Rapid Charger
- Clear a 10-car driveway on a single charge



**EGO™ Power+ 56-Volt Two-Stage Snow Blower (\$1,299.99)**

- 24-inch clearing path
- 50-foot throwing distance
- Includes (2) 5.0 Ah 56V ARC Lithium Batteries and Rapid Charger
- Clear an 18-car driveway on a single charge

# Power through the pandemic

Enhance your at-home experience with off-peak heating



When the coronavirus first sent many of us home to work and learn remotely, our region was just entering the warmer days of spring. Now, many months later, COVID still has us living the stay-at-home life as we transition back into the coldest winter months.

Prepare now for the uncertainty ahead by investing in the reliable, affordable and convenient comfort of off-peak electric heating and cooling.

Your cooperative's off-peak program allows you to save more as

you spend more time at home. When electric demand is high, off-peak technologies – such as **air-source heat pumps**, **electric plenum heaters** and **thermal storage room units** – automatically switch from electricity to a supplemental heating source like fuel oil.

There is no interruption to your cozy comfort. In exchange for helping your cooperative distribute its energy more efficiently in times of high need, you enjoy a super-low off-peak electricity rate – around half

of the regular rate. The savings add up fast!

The year 2020 was a time to rethink how we collaborate with co-workers, educate our children and socialize with friends. We know more will be done using technology in our homes, so now's the time to shift how you use your electricity as well.

Contact the energy experts at Beltrami Electric Cooperative today to learn how you can start saving more with off-peak electricity.

## Heating Heroes Unmasked



Rebates Available!

### Air-source heat pump



- Sized to meet the needs of any home
- Efficiently moves heat instead of generating it
- Also cools home in the summer
- Easy installation and minimal maintenance

### Plenum heater



- Easiest, most cost-effective route to off-peak
- Converts existing oil or gas system to dual-fuel
- Safer and cleaner than fossil-fuel heat alone
- Extends the life of your furnace

### Thermal storage room unit



- Best choice for homes without ductwork
- Efficiently stores off-peak heat in bricks
- Evenly delivers heat to any size room
- Stores heat, so does not require a separate backup fuel source



# CLASSIFIEDS

## Classified ads rules

- Ads are due by the first of the month prior to publication of the next issue. Example:
  - Ads submitted by December 1 will be published in the January issue.
  - Ads submitted between December 2 and January 1 will be published in the February issue.
- Ads may be submitted via our website at [www.beltramielc.com](http://www.beltramielc.com) (preferred).
- No real estate, rental, personal or commercial ads will be accepted.
- All ads must be 50 words or less and typed or printed clearly.
- Editor reserves the right to edit or reject any ad.
- Members may only submit one for sale and one wanted or free ad per issue.
- Ads are published at no charge as space permits on a first-received, first-printed basis, **with no guarantee your ad will appear.**
- Ads are only allowed to be repeated for **three consecutive months** and must be resubmitted each month.
- Include name and Beltrami Electric account number on all submissions.
- All telephone numbers are presumed to have a 218 area code unless otherwise noted. You may need to dial the 2-1-8 prefix, depending on where you live.

## For Sale:

Cabela's 7" black and white underwater viewing system. IR light on camera, 65 ft of cable with case, \$45. 854-7453.

1989 16' Alumacraft boat, 40 hp Mariner motor, Shoreland'r trailer, 3 swivel seats, live well and storage compartment, good/fair condition, \$1,700. 751-6210.

3 pairs of cross country skis (62", 66", 76"), \$100 per pair; Morrow Wildflower snowboard, \$75; 1 pair of Morrow grey snowboard boots, \$60; 1 ski bag (holds 2 pairs of skis), \$25; 2 sets of ski poles, \$10 per set; 1 pair of ski goggles, \$20. Used little, excellent condition. 751-9357.

Books: "These Old Boots from Farm to Forest" by James O. Lowmaster; "Growing up on a Farm in the Great Depression"; "WWII Radio News of that Time"; "What a Forester Really Does"; "His Hitch in the U.S. Marine Corps". If interested, please call 586-2492.

7-ft Kasson pool table, slate bed, plus all accessories, like new, \$500. Dining room chandelier, five white inverted tulip globes with gold branches and chain, nice. \$20. 243-2635.

1944 Allis B tractor, electric start with 5-ft log splitter. Extra parts: block, head, radiator, gas tank, 3 carbs, 2 magnetos, water pump and more. \$2,000/obo. 368-1073.

Homemade quilts: 4-5-6-inch Block, Crazy, Star. Twin, \$35; Full, \$40; Queen, \$55; King, \$60. Sewing machines, \$15 each. 243-2702.

Colt match completion AR 15 - 223 cal., never fired, asking \$2,000. Genesis Remington arms 50 cal. black powder percussion, everything needed to shoot, like new condition, asking \$250. Text 218-209-1863.

Spin Doctor bike repair stand. Never used. Adjustable height. Easy to set up or fold. \$20. 444-7778.

1985 Arctic Cat Cougar 500. Good body, track and feet. Needs carburetor work. Don't miss this classic cat! \$275. Call 751-7864.

Square hay bales, no rain. \$3.50. 444-0622, leave message.

Set of 4 fiberglass TV trays, with stand, \$20. Waiting for the school bus shelter, 3.5' x 6', w/picture window and inside bench, \$90. 586-2884.

Clam X2 Pro 1800 Denier thermal ice shelter, model 9770, 2 swivel seats, travel cover, mounted on sled with steel runners for towing, like new condition, \$650. 547-8702.

New queen size bed, used only a few times, too firm for me. Paid \$800, will sell for \$450. 766-8781.

Youth bow with practice arrows and hard case. Excellent cond. \$275. Low-profile tires Nexen 235/40R19 Set of four \$100. 368-4834.

Self defense pocket model Taurus 38 SP, 5-shot, nickel, w/laser sight, trigger lock, wood case, HP ammo. Registered. New. \$550 firm. Permit to buy will be checked. Test fire only on range w/ear drum protection. Not a toy. 760-9608.

White enclosed ski rack, attaches to roof rack, keeps skis, sleds, snowboards, toboggans, or luggage safe, clean and dry. Asking \$500. Wilkening wood-burning fireplace with blower, 18-ft of chimney. Purchased about 3 years ago, changing to gas fireplace. Very good condition. Call Don 444-2893.

Med-lift mobility lift chair, new condition, brown fabric, used for one month, asking \$600/obo. Colt AR 15 - 223 cal., never fired, \$1,800/obo. Coffee table: oak Mission style, lift top 54"x28", matching end table 24"x18", good condition, \$100. La-Z-boy chocolate brown leather good condition \$50/obo. Text 218-209-1863.

## Wanted:

American Girl doll accessories and clothes. Good to excellent condition. No big items. 586-2544.

Ammo, 30-30 shells, 243 shells, 22 shells. 751-6210.

Cross-country skis, snowshoes, or figure skates (size 9 or 9.5). Call or text Luke at 218-556-0553.

Pickup truck with manual transmission. 224-2739.

Looking for canning jars and lids. Please contact 751-2172 or 308-4615.

## Free:

Whirlpool cooktop without ceramic cover. Four burners, one dual. Could be modified for use in a tent or outdoors where electricity is available. 444-7778.

## BOARD MEETING HIGHLIGHTS

Beltrami Electric's board of directors conducted its regular monthly meeting Wednesday, Nov. 25, 2020. A quorum of directors was in attendance.

### The following reports were given:

- Chair Lund presented Memorial Resolutions for former directors Clarence Lindseth and Emmet Weidenborner who passed away recently.
- President and CEO Echemnach discussed the October financials and provided an update on the cooperative's response to the COVID-19 pandemic.
- Arlene Hogquist gave the Financial and Statistical report for October and discussed unclaimed capital credits.
- CEO Echemnach and the management team reviewed the preliminary 2021 budget and work plan.
- Chair Lund appointed Charlie Parson as the MREA voting delegate and Charlie Perkins as the alternate.
- Chair Lund presented a Resolution of Appreciation for former Beltrami Electric Cooperative Trust Board directors Randy Frisk and Sherry Billups who served from 2016 to 2020.
- Sue Kringsen and Murl Nord presented nominations to serve as directors on the Beltrami Electric Cooperative Trust Board of directors.
- Directors and President and CEO Echemnach shared highlights of educational classes and meetings attended on behalf of the cooperative.

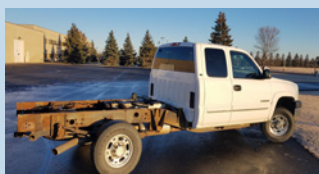
### The following actions were taken:

- Approved the consent agenda.
- Approved Memorial Resolutions for former BEC directors.
- Approved scholarships paid out of unclaimed capital credits.
- Approved a year-end employee bonus.
- Approved Appreciation Resolution for former Beltrami Electric Cooperative Trust Board directors.
- Approved nominations of Kay Mack and Miriam Osborn-Dougherty to the Beltrami Electric Cooperative Trust Board.

The next board meeting will be Wednesday, Jan. 27, 2021.

## ITEM FOR SALE BY BID

Item is available for viewing at Beltrami Electric, on the east side of the building, in front of BEC's garage area from January 12-15, between 8:00 a.m. and 4:00 p.m. Bids will be accepted during this time as well. Item sold "as-is." Cash only. Successful bidder is responsible for all taxes, license and transfer fees.



2004 Chevrolet Silverado 2500 HD 4x4, extended cab, 6.0 liter, 181,587 miles, no bed included. Minimum bid: \$1,500.

## We are looking for you!

Beltrami Electric Cooperative is looking for **Ralph E. Cloud** (Red Lake, Minn.) and **Daryl Stillday** (Ponemah, Minn.). Please call 218-444-2540 if you have any information.

## Electrical contractor continuing education classes to be held **online-only** in January



Minnkota Power Cooperative and Beltrami Electric Cooperative will again provide an opportunity for area electricians to obtain credits for license renewal by attending one of seven continuing education classes.

As a precaution against the spread of COVID-19, the classes will be offered online-only this year. Attendees will be required to have a computer or tablet with a strong internet connection and a web camera that must stay on during the course.

The registration fee is \$50 for eight code credits. Taking the class on multiple days will not qualify for 16 code credits. Registration must be completed at least seven days prior to the seminar.

This marks the 33<sup>rd</sup> year of the successful program, which is aimed at providing area trade allies with the latest information on electrical code and practices. For more information about the program, call (701) 795-4292 or email questions to [contractortraining@minnkota.com](mailto:contractortraining@minnkota.com).



## Need help paying your electric bill?

*The Energy Assistance Program (EAP) helps pay for home heating costs and furnace repairs for income-qualified households. We urge you to contact them immediately to avoid disconnection if you feel you are eligible for aid. (Eligibility is based on energy costs, household size and the three most recent months of income.)*

*Are you a senior living on a fixed income or suffering from a temporary financial shortfall? Then the following agencies may be able to assist you with your electric bill.*

### Bi-CAP in Bemidji

6603 Bemidji Ave N, Bemidji, MN 56601  
218-751-4631

### Bi-CAP in Walker

8245 Industrial Park Rd NW,  
Walker, MN 56484  
218-547-3438

### KOOTASCA

201 4<sup>th</sup> St. NW, Suite 130,  
Grand Rapids, MN 55744  
218-999-0824

### Leech Lake

115 6<sup>th</sup> St. NW, Cass Lake, MN 56633  
218-335-3783

### MAHUBE-OTWA

120 North Central Ave,  
Park Rapids, MN 56470  
218-732-7204

### Red Lake

15525 Mendota Ave, Redby, MN 56670  
218-679-3350

**EAP services may include:** payment of energy bills, help with utility disconnections or fuel deliveries, repair or replacement of homeowner's broken heating systems, energy efficiency and more.

### 2021 Maximum EAP Income Guidelines

Household Size	3-month Maximum	Household Size	3-month Maximum
1	\$7,066	5	\$15,763
2	\$9,240	6	\$17,937
3	\$11,415	7	\$18,345
4	\$13,589	8	\$18,753

Visit <https://mn.gov/commerce/consumers/consumer-assistance/energy-assistance/> for more EAP income guidelines and program information.

### Class Dates

Tuesday, Jan. 5  
Wednesday, Jan. 6  
Tuesday, Jan. 12  
Wednesday, Jan. 13  
Tuesday, Jan. 19  
Wednesday, Jan. 20  
Tuesday, Jan. 26

### Technology Requirements

- Computer or tablet with strong internet connection
- Download of GoTo Meeting software (free)
- Web camera is on at all times

### Registration

- Online registration and payment at [Minnkota.com](http://Minnkota.com)
- Link to the course and materials will be provided via email following registration

### Class Schedule

7:15 - 8 a.m. – Virtual sign-in  
8 a.m. - noon – Workshop  
Noon - 1 p.m. – Lunch break  
1 - 5 p.m. – Workshop

# HOPE HOUSE

NAMED BELTRAMI ELECTRIC'S 2020 TOUCHSTONE ENERGY® COMMUNITY AWARD WINNER

~ article continued from page 1 ~

House has inspired clients to work who did not think they could work. Clients have demonstrated leadership through serving on the Beltrami County Local Advisory Council, Hope House Board and Region II Mental Health Initiative, and have prepared information to talk with legislators.

Their mission is to provide community support services to individuals with serious and persistent mental illness, so they can live in the community in the least restrictive setting, function at their best level and reduce the need for involuntary hospitalization. For members wishing to learn more about Hope House, visit their website at <https://www.hopehousebemidji.org> or find them on Facebook at Hope House Bemidji.

The Hope House application will be submitted for consideration to the statewide Minnesota Touchstone Energy® Community Award committee. The statewide award recipient will be selected from numerous local award winners throughout Minnesota and the overall winner will receive \$1,000 toward a community cause of their choice.







# Beltrami Electric Cooperative Inc.

® Your Touchstone Energy® Cooperative 

4111 Technology DR NW  
PO Box 488  
Bemidji, MN 56619-0488  
218-444-2540 • 800-955-6083  
www.beltramielctric.com



## ATTENTION: Class of 2021

Beltrami Electric Cooperative scholarships available

### Good for technical school, college or university

Beltrami Electric Cooperative will be offering \$1,000 in scholarship money to deserving students of BEC members attending seven area high schools. If you are a high school senior and are interested in applying for a scholarship from BEC, please contact your high school's designated guidance office or scholarship committee for additional information and applications. The scholarship selection process is handled through each school's designated career guidance office or scholarship committee.

As a co-op, Beltrami Electric returns excess revenue to members as capital credits. When capital credits are unclaimed, they are deposited into a separate fund for education and are used to offer scholarships for the children of co-op members.

#### Eligibility – Who can apply?

Students graduating from high school in 2021 are eligible to apply. You must be:

- A dependent of a Beltrami Electric Cooperative member. A parent/guardian must be named on account.
- Must be a high school senior who plans to enroll as a full-time student at an accredited two-year or four-year college, university or vocational/technical school.
- Must be graduating from one of the seven schools listed below.

*Bemidji High School  
Blackduck High School  
Cass Lake High School  
Kelliher High School*

*Laporte High School  
Red Lake High School  
Walker-Hackensack-Akeley High School*

### Beltrami Electric Cooperative At-Large Scholarship

Beltrami Electric will award one \$1,000 at-large scholarship to a Beltrami Electric Cooperative member or a dependent of a Beltrami Electric member who plans to enroll as a full-time student in their first year of study at an accredited two-year or four-year college, university or vocational/technical school.

The at-large scholarship program is for students who do not attend one of the seven schools listed under Beltrami Electric's High School Scholarship program. Information and applications can be found at [www.beltramielctric.com](http://www.beltramielctric.com). Applications must be received by **April 1, 2021**, for consideration.

### Energy Efficiency Tip of the Month

Replace standard power strips with advanced power strips to save energy. Advanced power strips look like ordinary power strips, but they have built-in features that are designed to reduce the amount of energy used by standby electronics that consume energy even when they're not in use (also known as phantom load).

The National Renewable Energy Laboratory (NREL) estimates that the average home loses \$200 annually to energy wasted by phantom load.

Source: [www.nrel.gov](http://www.nrel.gov)

