

NORTHERN

L I G H T S October 2021

OCTOBER IS *National Co-op Month*




Beltrami Electric Cooperative (BEC) will be spending the month of October celebrating with our cooperative member-owners (like you!) and reflecting on what makes cooperative communities great. To mark the occasion, we want to supply you with some facts about co-ops – and why you should be proud to be a member of BEC.

National Cooperative Month has been celebrated every October since

1964.



Rural electric cooperatives were born in **1935**, when President Franklin D. Roosevelt created the Rural Electrification Administration (REA). Farmers used the support to band together and build electric systems for their rural communities.



Electric co-ops put their members first. On average, co-ops scored **higher** than all other electric companies on the 2021 American Customer Satisfaction Index assessment.



Cooperatives electrify around **56%** of the U.S. landmass – that's a lot of ground to cover!

Rural electric cooperatives differ from investor-owned utilities in two major ways:

1

Co-ops are **not-for-profit organizations**. Revenue is used to keep power flowing or returned to cooperative members.

2

Co-op decisions are **made by co-op members**. Members elect a board of their neighbors to help guide the co-op on their behalf.

Your cooperative is becoming more environmentally responsible every year. We now distribute **42% carbon-free** energy from resources like wind and hydropower.



Across the nation, co-ops serve **42 million** people in **2,500+** counties, including **92%** of persistent poverty counties.

BEC is part of a system of **11 co-ops** that receive electricity generated by Minnkota Power Cooperative. We partner with our co-op family to find more efficient, reliable and affordable ways to serve the region.



To learn more about your cooperative and all of the services we provide, visit www.beltramielectric.com.

Northern Lights (USPS 016488), Vol. 68, No. 10

Northern Lights is published monthly by Beltrami Electric Cooperative Inc., 4111 Technology Drive N.W., Bemidji, Minnesota 56601-5128. Subscription rate \$5. Periodicals postage paid at Bemidji, MN 56601.

Postmaster: Please send address corrections to Beltrami Electric Cooperative Inc., P.O. Box 488, Bemidji, Minnesota 56619-0488.

Office Hours: 8 a.m. to 4:30 p.m.
Monday – Friday

Member Service: 218-444-2540
or 1-800-955-6083

www.beltramielectric.com

Board of Directors

Chair	John Lund, DISTRICT 7
Vice Chair	Sue Kringen, DISTRICT 8
Secretary	Murl Nord, DISTRICT 1 (<i>Square Butte Director</i>)
Treasurer	Sharon Lembke, DISTRICT 9
Directors:	Charlie Perkins, DISTRICT 2; Michael Monsrud, DISTRICT 3; Craig Gaasvig, DISTRICT 4; Robert Wallner, DISTRICT 5; Rick Coe, DISTRICT 6 (<i>Minnkota Director</i>)
President and CEO	Jared Echternach
Editor	Angela Lyseng

Minnesota State Electrical Inspectors

Beltrami County

Wade Koons

218-255-3011 - wade@koonsinspections.com

Cass and Hubbard Counties

Anthony Kohrs

218-255-1046 - kohrsinspection@paulbunyan.net

These are the inspectors covering the area served by Beltrami Electric. They can be reached by phone Monday through Friday between 7 and 8:30 a.m. or by email as indicated.

Gopher State One Call 811
1-800-252-1166 or 811
www.gopherstateonecall.org

Anyone who plans to dig is required by law to notify the state of their intentions at least 48 hours in advance.

All digging requires the 48-hour notification so that buried telephone lines, television cables, pipelines, utility electrical lines, and municipal water and sewer lines can be located to ensure that none will be severed or damaged.

Mission of Beltrami Electric Co-op

To provide excellent value to our members through the safe delivery of reliable electric service, excellent member service and innovative energy solutions at fair and reasonable prices.

This institution is an equal opportunity provider and employer.



THE CEO'S REPORT

It's a Matter of (Co-op!) Principles

by Jared Echternach, president and CEO

ACE Hardware, Affinity Plus, Bemidji Cooperative Association, Harmony Foods, Carpet One, TruStar, Land O'Lakes, Paul Bunyan Communications and Beltrami Electric all share something in common: We're all cooperatives.

We may be in different industries, but we all share a passion for serving our members and helping our communities to thrive. In fact, all cooperatives adhere to the same set of seven principles that reflect our core values of integrity and honesty, accountability, dedication to safety and a commitment to our employees and the greater community good. October is National Co-op Month, so this is the perfect time to reflect on these principles that have stood the test of time but also provide a framework for the future. Let's take a look at the first three cooperative principles.

Voluntary and Open Membership

Just like all co-ops, Beltrami Electric Cooperative was created out of necessity – to meet a need that would have been otherwise unmet in our community. So in 1940, a group of neighbors banded together and organized our electric co-op so everyone in our rural community could benefit. For a modest membership fee to the co-op, any farmer could get electricity brought to his farm. Neighbors came together to tackle a problem that they all had but couldn't solve alone. They worked together for the benefit of the whole community, and the newly established

electric lines helped power economic opportunity in our community.

While this history may be forgotten, key parts of that heritage remain – the focus on our mission and serving the greater good. In this, we include everyone to improve the quality of life and economic opportunity for the entire community. Membership is open to everyone in our service territory, regardless of race, religion, age, disability, gender, language, political perspective or socioeconomic status.

Democratic Member Control

Our co-op is well suited to meet the needs of our members because we are locally governed. Each member gets a voice and a vote in how the co-op is run, and each voice and vote are equal. Beltrami Electric Cooperative's leadership team and employees live right here in our communities. Our board of directors, which helps set long-term priorities for the co-op, also lives locally on co-op lines. These board members have been elected by neighbors just like you. We know our members have a valuable perspective, and that's why we are continually seeking your input and encourage you to weigh in on important co-op issues and participate in co-op elections.

Our close connection to our communities ensures we get a firsthand perspective on members' priorities, thereby enabling us to make more informed decisions on long-term investments, such as community solar programs, equipment

**Community born.
Community led.
Focused on YOU.**

October is
National Co-op Month!

and technology upgrades, electric vehicle programs, etc.

Members' Economic Participation

As a utility, our mission is to provide safe, reliable and affordable energy to our members. But as a co-op, we are also motivated by service to our communities, rather than profits. Members democratically control and contribute equitably to the capital of Beltrami Electric Cooperative.

At least part of that capital remains the common property of the cooperative. Members allocate surpluses for co-op programs, initiatives, capital investments and supporting other activities approved by the membership.

Because we are guided by seven cooperative principles, it's not just about dollars – it's about opportunity for all and being fair when engaging with our

members. The cooperative way is a values-based business model.

Beltrami Electric Cooperative is a reflection of our local communities and their evolving needs. We view our role as a catalyst for good and making our corner of the world a better place. And by the way, that sums up the seventh co-op principle, "concern for community?"

17TH ANNUAL BELTRAMI ELECTRIC TOUCHSTONE ENERGY® OPEN RAISES \$10,750 FOR UNITED WAY OF BEMIDJI

The 17th Annual Beltrami Electric Touchstone Energy® Open was held Friday, Aug. 20, 2021, at Castle Highlands Golf Course, and raised \$10,750 for the United Way of Bemidji Area. The four-person scramble featured scheduled tee times for players and a boxed lunch from Big Apple Bagels in Bemidji.

"Beltrami Electric's Touchstone Energy Open golf tournament has been a staple event for the United Way of Bemidji Area. Not only has the tournament given hundreds of participants the opportunity to support their community, it's also helped thousands of people in our community to thrive. This event has raised more than \$154,320 since its inception," said Denae Alamano, executive director for the United Way of Bemidji Area. "We can't thank Beltrami Electric and their staff enough for the impact their event makes year after year!"



First place went to the team of Arnold Pemberton, Jr. with a net score of 53 in the 4-person team scramble tournament. Pictured from left: Brenden Beaulieu, Arnold Pemberton, Jr., Tammy Cartwright and Brent Pemberton, Sr.



The Bemidji Collision Center team also had a net score of 53, tying for first and per USGA tie-breaking rules, secured **second place** in the tournament. Pictured from left: Tim Gullickson, Gary Cartwright, Lee Pemberton and Tom Riewer.



Third place in the tournament went to the team of Paul Bunyan Communications with a net score of 55. Pictured from left: Dane Jones, Don Dale, Bob Lindberg and Brian Bissonette. Congratulations to the teams that placed.

Beltrami Electric would like to give a sincere thank you to the business sponsors, the 96 golfers and the tournament volunteers on behalf of the United Way of Bemidji Area. This event wouldn't be possible without their continued support!



THANK YOU TO THE FOLLOWING SPONSORS



- Bank Forward - Insure Forward
- Beaver Pride (BSU Alumni & Foundation)
- BEC Board of Directors
- Bemidji Collision Center
- Border States Electric Supply
- Brady Martz & Assoc.
- Castle Highlands Golf Course
- Choice Therapy, PA
- Coca-Cola Bottling
- Countryside Restaurant
- Darrell's Auto Glass
- Dondelinger GM
- Giovanni's Pizza
- Irby Utilities
- Jake Bluhm Insurance Agency

- Karvako
- Keith's Pizza
- Kraus Anderson
- Lakes Concrete Plus
- Land O' Lakes Wood Preserving
- Liquor Lodge
- Lyseng Logging
- Marco
- Miller McDonald
- National Inform. Systems Co-op (NISC)
- Nei Bottling / Northern Lakes Vending
- NFP Corporate Benefits
- Norenberg & Associates
- North Central Door Co.
- Northern Paving

- Okonite
- Otter Tail Power Co.
- Paul Bunyan Broadcasting/Hubbard
- Pinnacle Marketing Group
- Reed & Reed Well Drilling
- Renew PowerClean Inc
- RESCO
- Riverwood Bank/Financial
- Sanford Health Bemidji
- Sathre Title, Inc.
- Slim's Bar & Grill
- Stittsworth Meats
- Your QFM

SAFETY | RELIABILITY | AFFORDABILITY

VEGETATION MANAGEMENT PROGRAM

Here in the Northwoods, trees beautify our yards, provide us with shade and naturally attract climbing children. However, when trees grow to interfere with power lines, they become safety hazards, and are among



the most common causes for utility outages. Our **Vegetation Management Program (VMP)** is the process we use to clear trees/vegetation that extend into the right-of-way corridor.

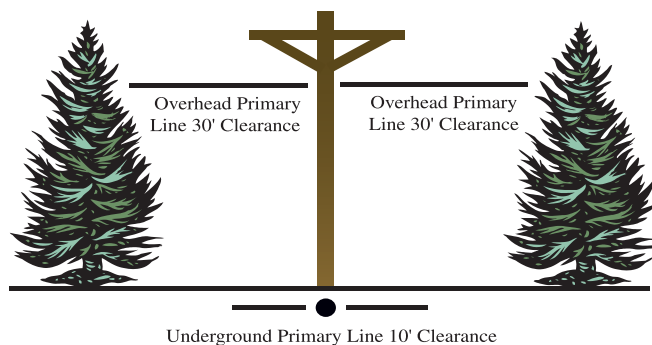
With more than 3,500 miles of electric lines that provide power to your homes and businesses

throughout our service area, there are numerous trees growing near or into lines that require trimming and management. Usually, it's because a tall-growing tree was planted directly under or too close to the line. It might have grown taller than the person who planted it expected. Whatever the reason, it is crucial they are a safe distance from the lines.

WHAT IS AN ELECTRIC LINE RIGHT-OF-WAY (ROW) CORRIDOR?

To understand why we do what we do, you first need to understand what it is we are talking about. An electric or power line right-of-way (ROW) corridor is a strip of land that an electric utility uses to construct, maintain, repair or replace overhead and underground power lines. The ROW allows the utility to provide clearance from trees and other things that could interfere with line installation, maintenance and operation.

Beltrami Electric requires a 30-foot clearance on each side of the poles and a 10-foot clearance on each side of underground lines.



Beltrami Electric will be removing trees and brush within the overhead corridor during the upcoming year in the Red Lake area.

Beltrami's 3-step right-of-way corridor maintenance cycle

STEP 1: Trees and brush are removed from the corridor.

STEP 2: Selective spot treatment of an EPA-approved biodegradable herbicide is completed where there are unwanted trees, brush and noxious weeds. This includes poison ivy around the utility poles and trees and brush that will eventually interfere with electrical service, reliability or accessibility. *(This does not include areas near gardens or mowed areas.)*

STEP 3: A review of any areas that may have been missed in prior herbicide treatments will follow 1-2 years after step two. Subsequent maintenance cycles follow in 8-10 year increments, which will be less intensive due to the decreased amount of trees and brush.

WHY DO WE CLEAR RIGHTS OF WAY?

We clear rights of way for three main reasons – to maintain the safety, reliability and affordability of your electric service. Line crews need proper clearance to be able to drive their trucks and equipment into the right of way to safely perform maintenance and repair work.

SAFETY

Your safety is a top priority of your electric cooperative. A tree that is growing too close to a power line creates a potentially deadly hazard. It provides a clear path for a child to climb from safety into the danger zone. Danger increases when trees and power lines make contact, but the tree does not even need to be touching the line to cause deadly results. Electricity can jump, or arc, from the power line to a nearby conductor, such as a tree. An effective right-of-way program helps keep our littlest members safe.

RELIABILITY

Service reliability, after safety, is a key responsibility of your electric co-op. You hear thunder rumbling in the distance. A storm is coming. Do you know that your chances of receiving uninterrupted service through a storm are greatly increased if your electric cooperative maintains clear rights of way? Wind and ice buildup can cause trees and limbs to fall on power lines. An effective VMP keeps many of the potential problems away from power lines and improves reliability for you and your neighbors down the line. One tree growing too close to your neighbors' power lines can knock out power for hundreds of others – including you. Proper clearance today prevents inconvenience tomorrow, reducing blinks and power surges.

AFFORDABILITY

An electric cooperative is a not-for-profit business, which means we provide a service and cover costs. When trees grow too close to power lines, the potential for costly repairs also grows. Suddenly, minor restoration efforts become major restoration efforts. In order to safely restore outages in the shortest amount of time, our lineworkers need to be able to drive our large trucks into the right of way. If there are obstructions such as trees or heavy brush, our crews are delayed in restoring electricity, thus leaving our members in the dark for an extended amount of time.

GUARDING THE GRID

Electric co-ops innovate to stay in front of cybersecurity

Through the decades, electric cooperatives have found countless ways to innovate in meeting the needs of their members. Most recently, information technology has been used to improve electric reliability, enhance member communication and empower consumers to make smarter energy choices.

But it has also given hackers and other bad actors new targets to exploit.

As essential service providers, electric utilities are the focus of significant cyber threats. This past year has already seen more than a fair share of attacks and breaches, including the high-profile Colonial Pipeline cyberattack. And for every incident that makes headlines, there are countless others that are thwarted, unreported or even unnoticed by the victims themselves.

Beltrami Electric Cooperative and its wholesale power provider, Minnkota Power Cooperative, work closely together to meet these challenges head on. As we recognize Cybersecurity Awareness Month in October, here are some of the ways in which your cooperative network helps guard the grid.



YOUR CO-OP NETWORK HELPS GUARD THE GRID

Technology

Beltrami Electric Cooperative's digital defense strategy includes a complex set of network systems, firewalls and other protective applications. A "defense-in-depth" technology strategy is used to create layers of security for a hacker to go through. Each layer presents a potential fail point where an anomaly could be noticed.



Training

While technology is important, it is quickly becoming a smaller part of protecting against cyberattacks. Most hackers are not trying to outsmart the technology, but instead focus on tricking people into providing the information they need to access the system – an act commonly referred to as phishing. Fraudulent emails, scams and other deceptive online practices are becoming much more prevalent. That's why your cooperative conducts continuous training to ensure employees understand the risks and how to avoid them.



Testing

Cooperatives promote a culture where every employee understands the role they play in keeping the organization secure. Intense testing of technology, procedures and response strategies are conducted on a routine basis to ensure the cooperative is ready in a worst-case scenario. Third-party audits are also performed regularly.



Cooperation

Not surprisingly, cooperation is a critical part of Beltrami Electric Cooperative's cybersecurity strategy. By using secure information sharing systems, electric cooperatives are alerted to emerging threats from other utilities and governmental entities. Additional support is provided for research and development, which helps cultivate cybersecurity partnerships with other vital sectors.



SMARTER AND STRONGER ENERGY SYSTEM

Cybersecurity is not a checklist task. It evolves and becomes more complex with each passing year. **Beltrami Electric Cooperative** is committed to collaborating and innovating as it works to build a smarter and stronger energy system to meet the needs of the membership.

CLASSIFIEDS

Classified ads rules

- Ads are due by the first of the month prior to publication of the next issue.
 - Ads submitted by October 1 will be published in November issue.
 - Ads submitted between October 2 and November 1 will be published in December issue.
- Ads may be submitted via our website at www.beltramelectric.com. (preferred)
- No real estate, rental, personal or commercial ads will be accepted.
- All ads must be 50 words or less and typed or printed clearly.
- Editor reserves the right to edit or reject any ad.
- Members may only submit one for sale and one wanted or free ad per issue.
- Ads are published at no charge as space permits on a first-received, first-printed basis, with no guarantee your ad will appear.
- Ads are only allowed to be repeated for **three consecutive months** and must be resubmitted each month.
- Include name and Beltrami Electric account number on all submissions.
- **NOTE: As of April 24, 2021, anyone with a telephone number from the 218 area code will need to dial 10 digits (area code + telephone number) for all local calls.**

For Sale:

Three Granite Ware roasting pans, two 19" pans and one 13" pan. All with covers. 12-quant Merrell brand aluminum pressure cooker. Will do pressures up to 15 lbs. All items in great shape, almost like new. Adult folding wheelchair, used only once. Has footrest and all leather cover. Very light weight. Arm rests are movable. More details call 218-444-1662.

Marquette 180-amp AC welder. Old but with all copper windings and in very good condition. \$175 with wheels, \$150 without. Cash only. No calls after 8 p.m. 218-854-7444.

Canoe, 17' fiberglass core craft, \$275/obo. Call 218-760-8266.

1980 Ford 7000, 140K miles, 2½-ton flatbed, 429 V8, 9-speed manual. Comes with 18-ft 5" wheel trailer w/new tires, ramps, needs new deck. \$3,800/obo. Call Dave 218-467-3555.

Two beautiful wood rockers over 100 years old, one has a leather seat, one has a wood seat. Pictures available. \$125 each or will sell the pair for \$225. Cash only. 218-444-7308.

Firewood, cut and split. Soft wood, \$50 per pickup load. Hard wood, \$75 per pickup load. You haul. 218-586-2839.

Solid oak dining set with 6 chairs upholstered in dark brown, \$400. All in fabulous shape. I can text or email pictures. Leave message 218-243-2805.

Beautiful dark oak china hutch. Excellent condition. \$500 firm. 218-751-2003.

Quantum J6 tilt power wheelchair, like new. \$1,000. Older Franklin parlor stove, never used, good condition, \$200 complete. Three - 10 R22.5 drive tires, new. Best offer. One - 900 R20 drive tire, new. Best offer. 218-407-7247

Blizzak tires with rims, p215-70R16. Tread is at 9/32 seconds, traded in Honda CRV these winter tires were used on. \$500 for tires and rims. Call or text 218-760-3955.

Model 880 Daisy BB gun, make a great Christmas gift, two well-padded beautiful bar stools, call for details on both 218-444-1662.

1955 Remington semi-auto 30-06 model 740. Beautiful gun, great condition. With period 4X Unertl Hawk scope, dot reticle. \$700/obo. Remington model 760 30-06 pump, good condition, 3x9 Nikon Buckmaster scope, ready to hunt. \$550/obo. Ruger LCR lightweight 5 shot revolver, 3 in barrel, Houge grips, \$450/obo. 218-428-6258.

John Deere 3-bottom plow - F145 semi-mount.

Rear tire and hydraulic lift. \$900/obo. 952-432-1675.

14-ft camo fishing boat, with trailer, cover, oars, anchor, electric trolling motor, and battery - \$800 firm. Baby Trend 3-wheel stroller \$25, 10 duck decoys and 6 floating goose decoys, all for \$175, 2009 Mazda 5 minivan, 173K miles, good tires, runs well, \$2,900/obo. 218-444-2336.

Custom oak baby cradle, built by local craftsman. Beautiful piece. \$150. 218-556-0805.

Sheet of heavy-duty solid copper (no alloys), 12" W x 70" L for home improvement or arts/crafts projects, \$35. Two-drawer metal file cabinets, \$20 each. Rustic wall coat rack, deer antler hooks on brown stained driftwood, \$90. Assortment of winter hunting/fishing jackets, pants, boots, \$5-\$30. 218-586-2884.

Tractor wheel weights, F&H# W-161, \$75. 30' Creosote power pole, like new, \$75. 20-ton MTG log splitter in very good shape, \$750. F20 Farmall tractor, does not run, \$500. Old 14' aluminum boat, \$100. 218-255-5808.

Portable Winco generator on trailer, 35 kVA. Three-axle trailer house frame, 9' x 55'. 218-647-8474, if no answer, leave message.

Homemade quilts: 4-5-6 Block, Crazy, Star. Twin \$40, Full \$45, Queen \$65, King \$70. New super-all grip 700-15 L.T. Tubeless tire, \$40. Three-drawer dresser, 44" L x 19" D, 1 drawer 4" deep, 2 drawers are 39" long, 8" deep, been restored, \$75. Sewing machines, \$15 each. 218-243-2702.

Fixed and climbing deer stands, \$65 each. Three Bridgestone Dueler A/T P275/65 R18 tires, \$90. Fish spear, \$25. Torque wrench, ½" drive, 50-250ft/lbs., plus 3 sockets, like new, \$110. McKesson wheelchair, good shape, \$90. 218-586-2617.

6' x 6½" hot tub, has 4 jets with decking around the tub, needs plumbing work. You haul. \$150. 218-751-7864.

6.5 Creedmoor AR-10 w/Vortex Viper PST 6-24x50 scope. \$3,800/obo. 218-766-5951.

La-Z-Boy recliner, excellent condition, wine color, \$300. 218-243-2635.

Mixed firewood: cut, split, seasoned. Near Kellier. \$55 standard pickup load; you haul. Can deliver. Call Mike 320-256-7255 or 320-557-8080.

Wanted:

Looking for OLD issues of Beltrami Electric Cooperative's Northern Lights newsletter, between the 1940s-1960s. Please contact Angela at Beltrami Electric or call 218-444-3689.

Taking orders for keepsake memory bears, dogs or rabbits. 218-766-6510.

Looking for a wood planer or jointer, call or text Luke at 218-556-0553.

German Shepherd puppy. 218-835-4998.

2006 to 2009 Toyota Prius. Dead or bad battery a must. 218-214-2611 or 218-835-7843.

Single cab, 8-ft bed, low mileage, 4-wd truck, 150 series, years 2006-2016. Husqvarna 445 chainsaw w/valve decompression in operating condition. Call 218-835-7785, leave clearly spoken message.

Free:

1989 RCA counsel, TV works, in good shape. Lots of American Rifleman magazines. 218-255-5808.

We are looking for you!



Beltrami Electric Cooperative is looking for **Roxanne R. McDermott (Bemidji, Minn.), Elisa M. Sailor (Cass Lake, Minn.)** and **Samuel T. Theisen (Blackduck, Minn.)**. Please call **218-444-2540** if you have any information.

UNITED STATES POSTAL SERVICE (All Periodicals Publications Except Requester Publications)

Statement of Ownership, Management, and Circulation

1. Publication Title: NORTHERN LIGHTS

2. Issue Frequency: 12 Times year

3. Issue Date: 9/10/2021

4. Issue Periodicity: 12

5. Annual Subscription Price: \$5.00

6. Complete Mailing Address of Known Office of Publication (Not printer): Angela Lyng, PO Box 488 4111 Technology Drive NW Bemidji Beltrami MN 56619-0488

7. Complete Mailing Address of Headquarters or General Business Office of Publisher (Not printer): PO BOX 488 Bemidji MN 56619-0488

8. Full Names and Complete Mailing Addresses of Publisher, Editor, and Managing Editor (Do not leave blank): Beltrami Electric Cooperative Inc PO Box 488 Bemidji MN 56619-0488

9. Full Names and Complete Mailing Addresses of Publisher, Editor, and Managing Editor (Do not leave blank): Angela Lyng PO Box 488 Beltrami MN 56619-0488

10. Owner (Do not leave blank): Beltrami Electric Cooperative Inc PO Box 488 Bemidji MN 56619-0488

11. Known Bondholders, Mortgagees, and Other Security Holders Owring or Holding 1 Percent or More of Total Amount of Bonds, Mortgages, or Other Securities. (None, check box)

12. Tax Status (For completion by nonprofit organizations authorized to mail and nonprofit news outlets):

13. See back of this form for instructions regarding completion of this form.

14. Publication Title: NORTHERN LIGHTS

15. Issue Frequency: Newsletter

16. Issue Date: September 2021

17. Issue Periodicity: 12

18. Annual Subscription Price: \$5.00

19. Complete Mailing Address of Known Office of Publication (Not printer): Angela Lyng, PO Box 488 4111 Technology Drive NW Bemidji Beltrami MN 56619-0488

20. Complete Mailing Address of Headquarters or General Business Office of Publisher (Not printer): PO BOX 488 Bemidji MN 56619-0488

21. Full Names and Complete Mailing Addresses of Publisher, Editor, and Managing Editor (Do not leave blank): Beltrami Electric Cooperative Inc PO Box 488 Bemidji MN 56619-0488

22. Full Names and Complete Mailing Addresses of Publisher, Editor, and Managing Editor (Do not leave blank): Angela Lyng PO Box 488 Beltrami MN 56619-0488

23. Owner (Do not leave blank): Beltrami Electric Cooperative Inc PO Box 488 Bemidji MN 56619-0488

24. Known Bondholders, Mortgagees, and Other Security Holders Owring or Holding 1 Percent or More of Total Amount of Bonds, Mortgages, or Other Securities. (None, check box)

25. Tax Status (For completion by nonprofit organizations authorized to mail and nonprofit news outlets):

26. See back of this form for instructions regarding completion of this form.

UNITED STATES POSTAL SERVICE (All Periodicals Publications Except Requester Publications)

Statement of Ownership, Management, and Circulation

1. Publication Title: NORTHERN LIGHTS

2. Issue Frequency: Newsletter

3. Issue Date: September 2021

4. Issue Periodicity: 12

5. Annual Subscription Price: \$5.00

6. Complete Mailing Address of Known Office of Publication (Not printer): Angela Lyng, PO Box 488 4111 Technology Drive NW Bemidji Beltrami MN 56619-0488

7. Complete Mailing Address of Headquarters or General Business Office of Publisher (Not printer): PO BOX 488 Bemidji MN 56619-0488

8. Full Names and Complete Mailing Addresses of Publisher, Editor, and Managing Editor (Do not leave blank): Beltrami Electric Cooperative Inc PO Box 488 Bemidji MN 56619-0488

9. Full Names and Complete Mailing Addresses of Publisher, Editor, and Managing Editor (Do not leave blank): Angela Lyng PO Box 488 Beltrami MN 56619-0488

10. Owner (Do not leave blank): Beltrami Electric Cooperative Inc PO Box 488 Bemidji MN 56619-0488

11. Known Bondholders, Mortgagees, and Other Security Holders Owring or Holding 1 Percent or More of Total Amount of Bonds, Mortgages, or Other Securities. (None, check box)

12. Tax Status (For completion by nonprofit organizations authorized to mail and nonprofit news outlets):

13. See back of this form for instructions regarding completion of this form.

BELTRAMI ELECTRIC COOPERATIVE BOARD REORGANIZES

Each year following the annual meeting, your board of directors holds its organizational meeting. Congratulations to our board officers on their election: John Lund, chair; Sue Kringen, vice chair; Murl Nord, secretary; Sharon Lembke, treasurer. John Lund was also elected to serve on the Cooperative Development's board of governors.



John Lund
Chair



Sue Kringen
Vice Chair



Murl Nord
Secretary



Sharon Lembke
Treasurer



Need help paying your electric bill?

The Energy Assistance Program (EAP) helps pay for home heating costs and furnace repairs for income-qualified households. We urge you to contact them immediately to avoid disconnection if you feel you are eligible for aid. (Eligibility is based on energy costs, household size and the three most recent months of income.)

Are you living on a fixed income or suffering from a temporary financial shortfall? Then the following agencies may be able to assist you with your electric bill.

Bi-CAP in Bemidji

6603 Bemidji Ave N, Bemidji, MN 56601
218-751-4631

Bi-CAP in Walker

8245 Industrial Park Rd NW,
Walker, MN 56484
218-547-3438

KOOTASCA

201 4th St. NW, Suite 130,
Grand Rapids, MN 55744
218-999-0824

Leech Lake

115 6th St. NW, Cass Lake, MN 56633
218-335-3783

MAHUBE-OTWA

120 North Central Ave,
Park Rapids, MN 56470
218-732-7204

Red Lake

15525 Mendota Ave, Redby, MN 56670
218-679-3350

EAP services may include: payment of energy bills, help with utility disconnections or fuel deliveries, repair or replacement of homeowner's broken heating systems, energy efficiency and more.

2022 Maximum EAP Income Guidelines

Household Size	3-month Maximum	Household Size	3-month Maximum
1	\$8,809	5	\$19,651
2	\$11,520	6	\$22,362
3	\$14,230	7	\$22,870
4	\$16,941	8	\$23,378

Visit <https://mn.gov/commerce/consumers/consumer-assistance/energy-assistance/> for more EAP income guidelines and program information.

IS YOUR OFF-PEAK SYSTEM

Ready for Winter?



It's hard to believe winter is right around the corner. Since weather conditions and future wholesale power prices make the amount of load control hard to predict, we encourage all members with off-peak heating systems to have a **reliable, automatic backup heating system** in place and ready to use when needed.

TO ENSURE YOUR TOTAL COMFORT THIS WINTER, CONSIDER THE FOLLOWING QUESTIONS:

1. *Is your backup heating system sized to heat your entire home or business and does it maintain an adequate comfort level?* If not, consider upgrading.
2. *Is your backup system propane/fuel oil?* Be sure to fill your propane or fuel oil tank at the beginning of the season, and make sure your tank is large enough to hold an adequate supply. If your propane tank gets low during extreme cold temps, it may not work properly.
3. *Is your backup system wood?* Ensure you have an adequate supply of firewood available when needed.
4. *Is your backup heating system working properly?* Make sure to change your furnace filter regularly. Contact a heating/ventilation/air conditioning (HVAC) professional to inspect/maintain your system as needed.

Contact our Energy Experts today at **(218) 444-2540** to find out more about how off-peak heating works and the incentives available for the installation of new off-peak electric heating equipment. If your electric heating equipment isn't operating properly, contact our office to learn more about our electric heat maintenance program.

BOARD MEETING HIGHLIGHTS

Beltrami Electric Cooperative's board of directors conducted its regular monthly meeting Wednesday, Aug. 25, 2021. A quorum of directors was present.

The following reports were given:

- The board congratulated Mike Monsrud and Sharon Lembke on their election to the board.
- President and CEO Echernach made his monthly report, including discussion on the cooperative financials, employee updates, the upcoming board retreat and legislative issues affecting cooperatives.
- Arlene Hogquist gave the financial report for July.
- Sam Mason discussed the annual meeting held Aug. 11, 2021.
- Chair Lund appointed the CFC voting delegate.
- A Resolution of Appreciation recognizing Charlie Parson for his years of service as a director of the Beltrami Electric Cooperative board of directors was presented to the board.
- An appointment to the Beltrami Electric Cooperative Trust board was discussed.
- Directors and the president and CEO shared highlights of meetings attended on behalf of the cooperative and discussed upcoming meetings and events.

The following actions were taken:

- Elected John Lund as chair, Sue Kringen as vice chair, Murl Nord as secretary and Sharon Lembke as treasurer.
- Elected John Lund as governor to Cooperative Development, LLC.
- Approved the consent agenda.
- Approved scheduling the 2022 annual meeting on Aug. 10, 2022, at the Beltrami County Fairgrounds.
- Adopted Resolution of Appreciation as presented.
- Appointed Sharon Hadrava to the Beltrami Electric Cooperative Trust board.
- Approved the director and president and CEO expenses.

The next board meeting will be Wednesday, Oct. 27, 2021.



Beltrami Electric Cooperative Inc.

® Your Touchstone Energy® Cooperative 

4111 Technology DR NW
PO Box 488
Bemidji, MN 56619-0488
218-444-2540 • 800-955-6083
www.beltramielectric.com



The 2020 Touchstone Energy Community Award recipient was Hope House, a nonprofit organization that helps people with long-term or serious mental illness regain their lives.

Beltrami Electric Cooperative seeking nominations for the Touchstone Energy® Community Award

Do you know an organization that has made outstanding contributions to our local communities?



Touchstone Energy®
The power of human connections®

Beltrami Electric is seeking applications for the Touchstone Energy® Community Award, which recognizes nonprofit and community groups that have shown a strong commitment to the community. Any organization that has helped make their community within the areas served by Beltrami Electric a better place to live and work is eligible for the \$500 cash award.

Community members may nominate an organization by completing the application form, available at Beltrami Electric Cooperative, 4111 Technology Dr NW, Bemidji, or online at www.beltramielectric.com. Questions may be directed to Angela Lyseng at **218-444-3689**. The application will require a description of the project, program or event and the positive impact it brought to the community. Completed applications must be received at Beltrami Electric's office by **Oct. 29, 2021**.

"As an electric cooperative serving this area, we have a high regard for community involvement," president and CEO of Beltrami Electric Jared Echernach said. "This award allows us to highlight and encourage those organizations that have shown an outstanding commitment to our community."

The award recipient will be announced in November and will then contend for the statewide Touchstone Energy Community Award, which has a cash prize of \$1,000. Minnesota Touchstone Energy cooperatives are part of a national alliance of more than 750 rural electric cooperatives in 46 states that adhere to the values of integrity, accountability, innovation and commitment to community.

PAST YEARS' WINNERS

- 2004 - Blackduck Tri Sigma General Federated Women's Club
 - 2005 - Bemidji Area Task Force on Underage Drinking, Drugs and Gang Activity
 - 2006 - Healthy Community Healthy Kids
 - 2007 - The Sexual Assault Program of Beltrami, Cass and Hubbard Counties
 - 2008 - The Radiothon to End Child Abuse
 - 2009 - Bemidji Garden Club (Formerly Northwoods Garden Club of the Bemidji Area)
 - 2010 - Bemidji Skate and Bike Association
 - 2011 - Kelliher Resource Center Committee
 - 2012 - Bemidji Area Take a Kid Fishing*
 - 2013 - Blackduck Area Toys for Kids
 - 2014 - Bemidji Area Reading Canines (BARC)*
 - 2015 - Jack Pine Stables
 - 2016 - Northland Composite Squadron - Civil Air Patrol
 - 2017 - Bemidji Area Cross Country Ski Club
 - 2018 - Ruby's Pantry of Bemidji
 - 2019 - Village of Hope
 - 2020 - Hope House*
- (* Awarded statewide award)