

NORTHERN

L I G H T S

December 2021



Capital Credits – a **BENEFIT** of **YOUR** cooperative membership!

It **PAYS** to be a member-owner of Beltrami Electric! Earning and receiving capital credits is just one of the benefits of membership in your cooperative!

Beltrami Electric Cooperative is a member-owned, not-for-profit cooperative. While investor-owned utilities return profits to investors and stockholders, we allocate excess revenue to members as "capital credits," and retire – or pay – them when the co-op's financial condition permits.

This year the board of directors for Beltrami Electric has approved retiring and paying more than \$1.4 million in capital credits to current and former members in 2021. In addition, the cooperative paid out more than \$200,000 in estate retirements, which brings the total capital credits paid in 2021 to more than \$1.6 million.

If you were a member of the cooperative prior to 2021 and have an active billing account, you will receive your capital credit refund as a credit to your bill in late November or early December (*depending on your billing cycle*). The credit will be applied to your primary service location that is listed on your membership and will be displayed as **"Apply Capital Credit Retirement"** under the Account Detail. Members without allocated capital credits between the years of 1995-2020 will not receive a general retirement.

HOW CAPITAL CREDITS WORK



Thank you for your membership!

Northern Lights (USPS 016488), Vol. 68, No. 12

Northern Lights is published monthly by Beltrami Electric Cooperative Inc., 4111 Technology Drive NW, Bemidji, Minnesota 56601-5128. Subscription rate \$5. Periodicals postage paid at Bemidji, MN 56601.

Postmaster: Please send address corrections to Beltrami Electric Cooperative Inc., P.O. Box 488, Bemidji, Minnesota 56619-0488.

Office Hours: 8 a.m. to 4:30 p.m.
Monday – Friday

Member Service: 218-444-2540
or 1-800-955-6083

www.beltramielectric.com

Board of Directors

Chair	John Lund, DISTRICT 7
Vice Chair	Sue Kringen, DISTRICT 8
Secretary	Murl Nord, DISTRICT 1 (<i>Square Butte Director</i>)
Treasurer	Sharon Lembke, DISTRICT 9
Directors:	Charlie Perkins, DISTRICT 2; Michael Monsrud, DISTRICT 3; Craig Gaasvig, DISTRICT 4; Robert Wallner, DISTRICT 5; Rick Coe, DISTRICT 6 (<i>Minnkota Director</i>)
President and CEO	Jared Echternach
Editor	Angela Lyseng

Minnesota State Electrical Inspectors

Beltrami County

Wade Koons

218-255-3011 - wade@kooninspections.com

Cass and Hubbard Counties

Jeff Overmeyer

218-252-0919

These are the inspectors covering the area served by Beltrami Electric. They can be reached by phone Monday through Friday between 7 and 8:30 a.m. or by email as indicated.

Gopher State One Call 811
1-800-252-1166 or 811
www.gopherstateonecall.org

Anyone who plans to dig is required by law to notify the state of their intentions at least 48 hours in advance.

All digging requires the 48-hour notification so that buried telephone lines, television cables, pipelines, utility electrical lines, and municipal water and sewer lines can be located to ensure that none will be severed or damaged.

Mission of Beltrami Electric Co-op

To provide excellent value to our members through the safe delivery of reliable electric service, excellent member service and innovative energy solutions at fair and reasonable prices.

This institution is an equal opportunity provider and employer.



2021-2022 Heating Season

by Jared Echternach, president and CEO

Members to receive more than \$1.6 million in capital credits

I am pleased to report that your board of directors has authorized a general capital credit retirement of more than \$1.4 million to current and former members in 2021. In addition, the cooperative paid out more than \$200,000 in estate retirements, which brings the total capital credits paid in 2021 to more than \$1.6 million. Credits will appear on the bills members receive in late November or early December, depending on the billing cycle. Checks to former members are scheduled to be mailed in mid-December, just in time for the holiday season.

Each year since 1984, your board of directors has authorized a retirement of capital credits to the membership. This year your board of directors once again authorized a hybrid method, retiring 100% of the remaining co-op allocation from 1994 to wholesale accounts, 100% of the remaining co-op allocation from 1995 excluding wholesale accounts and 5% of the co-op allocation from all remaining unretired years excluding wholesale accounts. Under the hybrid method of retirement, more members and newer members realize one of the great benefits of membership and experience the cooperative difference.

As a member of Beltrami Electric Cooperative, you are also an owner. Any margins realized at the end of the year are allocated to the members based on their patronage. We credit this amount on an annual basis to a patronage allocation account in your name. This allocation is held by the cooperative as equity, which allows us to reduce borrowing costs while maintaining your distribution plant. To date, more than \$29 million has been returned to members in the history of the cooperative.

Budget and rate outlook

Your board of directors is in the process of reviewing the 2022 preliminary budget and rates. We expect wholesale power costs to remain stable in 2022. This is good news since nearly 70% of our total costs are comprised of wholesale power costs. We will continue to work hard internally to control costs while maintaining safe, reliable electric service and excellent

member service. According to our preliminary budget projections, no rate increase will be necessary in 2022. This is great news considering the rising price of other energy sources (see below). Your cooperative's last retail rate adjustment occurred in 2018.

Electricity prices remain stable as other energy costs rise

In Minnesota, the cost of energy matters. We use significantly more energy per capita than the average U.S. citizen with our cold winters and long-distance travel. The cost of heating and transportation fuels are on the rise, but we forecast stable electricity pricing in 2022.

Members who participate in the off-peak electric heating program have seen rates remain flat in recent years, while fossil fuel prices fluctuate up and down consistently. In exchange for the discounted off-peak electric rate (about half the retail rate), members voluntarily allow electric heating systems and other interruptible loads to be temporarily turned off or switched to a backup fuel source during periods of high demand for electricity across the region. By utilizing the off-peak program, Minnkota Power Cooperative, Beltrami Electric Cooperative's wholesale power provider, avoids purchasing high-priced energy from other utilities or the energy market during peak demand periods.

The off-peak program proved extraordinarily valuable during the electric grid challenges experienced in February 2021, when widespread power outages and high market prices impacted Texas and other areas of the country. Minnkota and Beltrami Electric Cooperative were able to strategically use the program to shield you from price volatility and other system issues.

As you plan for this winter season, we want to make sure our members know what to expect and are prepared for how increasing fuel costs have the potential to impact your home heating strategy.

What can you expect this winter?

- **Higher propane, fuel oil and natural gas prices**

Expect to see the cost of home heating fuels much higher this winter compared to previous years. Propane prices are

near double the cost compared to this time last year and are forecasted to remain high throughout the winter. Fortunately, the cost of electricity will stay stable this winter. For members that have off-peak electric heat, this is excellent news!

- **Stable electricity prices**
Natural gas price increases have contributed to wholesale electricity market prices being twice as high as they were last year. Your cooperative and Minnkota are able to avoid these issues because our power supply consists of coal, wind and hydro, which are not susceptible to fuel price spikes. The off-peak/load control programs can also be used to avoid the costly wholesale electricity market.
- **Potential for more off-peak load control hours**
With more wholesale electricity market volatility, members should expect the potential for more off-peak load control

hours than in previous years. More than 200 hours of load control is possible during the winter season depending on wholesale power market prices and weather conditions.

What can you do to prepare?

- **Switch to off-peak electric heating**
If you have a dual-fuel furnace, it is time to switch to off-peak electricity and use propane or fuel oil as a backup. This strategy will limit your usage of higher-priced heating fuels. Contact our energy experts today to find out more about how off-peak heating works and the incentives available for the installation of new off-peak electric heating equipment.
- **Fill your propane or fuel oil tank**
Be sure to fill your propane or fuel oil tank as soon as possible, and make sure your tank is large enough to hold an adequate supply. If your propane tank gets low during extreme cold temperatures, it may not work properly.

Remember, prices typically rise as demand increases during the heating season.

- **Check your furnace**
Make sure to change your furnace filter regularly. Contact a heating/ventilation/air conditioning (HVAC) professional to inspect/maintain your system as needed. Early attention to maintenance can help prevent failures in the heart of heating season.

Members will undoubtedly have to spend more on energy to heat their homes and for transportation this year, but the good news is that the price you pay for electricity is forecasted to remain flat. If you have questions about how to save on your winter heating bills or are having issues making payments, please contact our offices. We are here to help and can connect you with the right resources, no matter the situation.

BELTRAMI EMPLOYEE NEWS

Welcome, new hires!



Becky Theis – Beltrami Electric welcomes Becky Theis to our cooperative team as a general accountant. She has a bachelor's degree in accounting from Bemidji State University and 25 years of accounting experience. She enjoys spending time with family and friends, gardening, reading and being outdoors. Becky and her husband Donald live in Bemidji and have a son Elliott (19), and two daughters, Lexi (22) and Lindsey (19). Welcome, Becky!



Stacie Leeper – Beltrami Electric welcomes Stacie Leeper to our cooperative team as an engineering and operations representative. Stacie has several years of experience in the gas/oil and construction industry. Stacie and her husband Buck live in Guthrie and have a son, Kade (20), and daughter, Brie (15). She enjoys fishing, gardening and spending time with family and friends. Welcome, Stacie!

BOARD MEETING HIGHLIGHTS

Beltrami Electric Cooperative's board of directors conducted its regular monthly meeting Wednesday, Oct. 27, 2021. A quorum of directors was present.

The following reports were given:

- President and CEO Echernach and the board discussed recent safety successes and observations.
- Jessica Delaney, secretary of the Beltrami Electric Cooperative Safety Committee, gave an update to the board.
- President and CEO Echernach made his monthly report, including discussion of economic developments, employee updates, Cooperative Development update, COVID situation update at the cooperative and legislative issues affecting cooperatives.
- Arlene Hogquist gave the financial report for September and reviewed the third quarter Balanced Performance Scorecard.
- Alison Deelstra, Cooperative Financial Corporation (CFC), presented the Key Ratio Trend Analysis (KRTA) for Beltrami Electric Cooperative.
- Sam Mason gave a solar self-supply update.
- Murl Nord reported on Square Butte.
- Rick Coe reported on Minnkota Power and Minnesota Rural Electric Association.
- Mike Monsrud reported on a class he attended.
- Chair Lund appointed the Cooperative Network voting delegate.

The following actions were taken:

- Approved the consent agenda.
- Adopted Resolutions as presented.
- Approved the director and president and CEO expenses.

The next board meeting will be Wednesday, Dec. 29, 2021.

Statement of Operations Year-to-date: September 2021

	September 2020	September 2021
Operating Revenue.....	\$ 42,063,457	\$ 42,394,783
Cost of Purchased Power.....	\$ 27,793,189	\$ 27,531,875
Other Operating Expenses	\$ 11,848,252	\$ 12,238,616
Total Cost.....	\$ 39,641,441	\$ 39,770,491
Operating Margin	\$ 2,422,016	\$ 2,624,292
Other Margins	\$ 586,391	\$ 797,981
Total Margins.....	\$ 3,008,407	\$ 3,422,273
kWh Sold	358,517,265	355,474,998
Average Meters Billed	21,463	21,717

Value during volatility

Minnkota and its members expect active off-peak season spurred by volatile energy markets

Last winter, a polar vortex event sent energy market prices soaring. Fewer resources across the country were able to generate electricity in the historic cold, and demand was high for the few resources that were generating enough to sell into the electric grid.

Utilities are experiencing those high market prices again – but it's not because of a single major weather event this time. It's the climbing cost of natural gas.

“Natural gas is one of those resources that typically help manage the variability in electricity generation, and we're seeing prices that are significantly higher than what we've seen in the past 10-15 years,” explained Todd Sailer, senior manager of power supply & resource planning for Minnkota Power Cooperative (Beltrami's wholesale power provider). “We're seeing prices double and triple what they were last year, or even over the last couple of years.”

While the energy markets soared for only 7-10 days in February 2021's polar vortex, Sailer says this volatility could last throughout the winter season, or longer. That's good insight for cooperative members on the demand response – or off-peak – program, which allows the co-op to temporarily interrupt service to a participant's off-peak loads (electric heating, large-capacity water heaters, electric vehicle chargers, etc.) in exchange for a lower electric rate.

“The projection is that these high prices will likely drive our demand response more than we've seen in the past years,” Sailer said.

Minnkota's energy marketers are preparing for 200 hours of off-peak load control this winter, but Sailer says that could rise if natural gas prices continue to climb. He also notes that load control could be spread out over more days and not always coincide with major weather events.

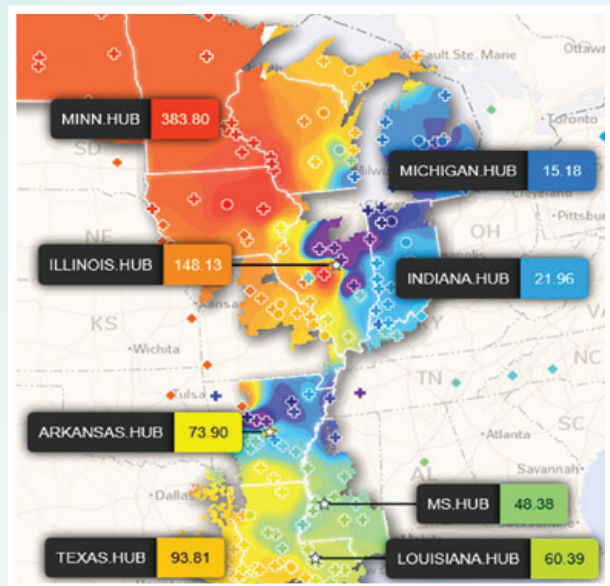
“If we have days of low intermittent resources in the region, like wind power, the expectation is that the markets will respond and you'll see higher markets, which will result in more off-peak control,” he said.

Ultimately, the cooperative will deploy off-peak

load control when it needs to protect itself from buying high-price energy from the market. This system was established years ago to avoid building more generation facilities for peak need that only arises a few days out of the year. That, in turn, keeps rates low for consumers. By being a part of the off-peak load control program, consumers can also take advantage of an even lower electric rate without any disruption in comfort.

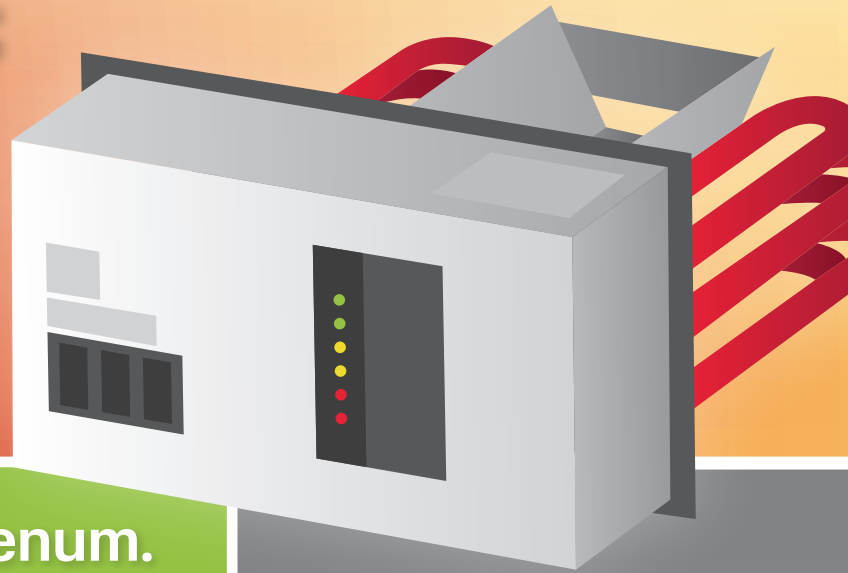
As we enter the winter, Sailer urges those who are a part of the off-peak program to make sure they have adequate backup fuel supply now. When the cooperative runs its load control tests before the peak of the cold season, confirm that all parts of your heating system are running smoothly.

“It's not just natural gas – it's propane, it's all fuel sources that have seen an increase in cost. Which leads to people reliant on their off-peak system,” Sailer said. “Members should be making sure their system works.”



This image of the Midcontinent Independent System Operator (MISO) energy markets on Feb. 13, 2021, shows a swath of red, where market prices in our region climbed to about 25 times higher than recent averages. With natural gas prices high, any dip in intermittent resource generation – like wind – can send costs soaring.

Scared of propane prices?



Protect yourself with a plenum.

The costs of fuels used to heat our homes in the winter are rising, and they're rising fast. Propane prices entered this year's cold season nearly 100% higher than they were at the same time last year. In a state as frigid as ours, heating with only propane can quickly take a chunk out of your holiday shopping budget – and beyond.

Protect yourself from the volatile price of propane by utilizing a dual-fuel electric plenum heater on our popular off-peak program. The cost of off-peak electricity has remained low and stable for more than a decade, unlike the seasonal swings of propane. If you already have a plenum, make sure it's turned on and working smoothly to take advantage of enormous savings.

A plenum pairs easily with your existing oil or propane forced-air system. It uses the furnace fan you already have to move air across heater elements to heat your home, as well as the same thermostat and ductwork. Most of the fall and winter

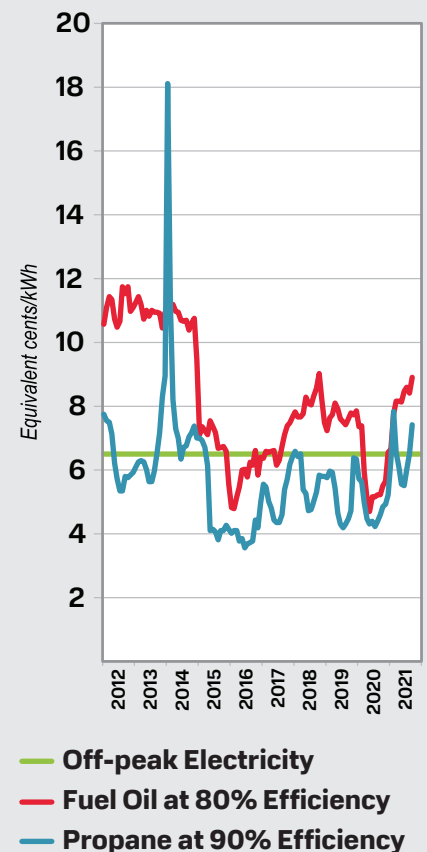
season, the plenum will deliver reduced-cost off-peak electric heat to keep your space cozy and comfortable. When your cooperative finds it necessary to lower the electric demand on its system (usually 100-200 hours per year, often during extreme cold), it will remotely switch your heat to a backup fuel, like propane. You notice no difference in comfort – but you'll notice a big difference on your energy costs!

Plenums are a safe and clean way to warm your home, and they allow you to receive the off-peak heating rate – about 50% of the standard rate – as well as a large rebate on installation. Plus, installing a plenum heater will have you relying less on your gas furnace, which can help increase the furnace's lifespan. In many cases, a plenum can be installed in conjunction with an air-source heat pump, which brings additional benefits.

Propane prices are projected to remain high throughout the winter, so call Beltrami today to find out how you can get started with a plenum heater.

This 10-year snapshot shows how volatile propane and fuel oil prices can be over time, as off-peak electricity rates stay low and steady. Around 2013, propane followed an upward trend that peaked nearly three times higher than off-peak electricity, and it is currently on the rise again.

Average Home Heating Prices
(Last 10 years)



CLASSIFIEDS

Classified ads rules

- Ads are due by the first of the month prior to publication of the next issue.
 - Ads submitted by December 1 will be published in January issue.
 - Ads submitted between December 2 and January 1 will be published in February issue.
- Ads may be submitted via our website at www.beltramelectric.com. (preferred)
- No real estate, rental, personal or commercial ads will be accepted.
- All ads must be 50 words or less and typed or printed clearly.
- Editor reserves the right to edit or reject any ad.
- Members may only submit one for sale and one wanted or free ad per issue.
- Ads are published at no charge as space permits on a first-received, first-printed basis, **with no guarantee your ad will appear.**
- Ads are only allowed to be repeated for **three consecutive months** and must be resubmitted each month.
- Include name and Beltrami Electric account number on all submissions.
- **NOTE: Anyone with a telephone number from the 218 area code will need to dial 10 digits (area code + telephone number) for all local calls.**

For Sale:

2012 Can Am 1,000 Limited Commander. 3,600 miles, in good shape and runs well. Blue in color with power steering and on-board air compressor and GPS. Call for pictures, \$10,995/obo. Polaris 550 Trail 2 up, air cooled oil injection engine with only 1012 miles. Ran last year and runs good, has reverse. \$4,000/obo. Call Wayne for pictures. 701-741-9731.

Four beautiful formals, size small, colors are darker red, candy apple red, chocolate brown, and shades of pastel colors. \$25 each. Please call 218-751-9357.

Youth bow includes arrows and hard case, excellent cond., \$250. Set of four low-profile Nexen 235/40R19 used tires, good cond., \$80 total. 218-368-4834.

19th Century Rosemaled, immigrant trunk dated 1898; Telemark District of Norway; clean, very good condition. \$495/obo. 218-586-2776.

7.62x39 bullets, \$55 for box of 50, have several. 218-766-8037.

Black 2001 5-speed, 4-cylinder, 4-door Honda Civic LX sedan with new water pump, timing belt, spark plugs, crankshaft position sensor, oil pan gasket, and recent cooling system flush. Runs great. Amazing gas mileage. Single person owner since brand new. Well maintained. \$6,000/obo. Serious callers only if interested: 218-553-1110.

6-ft 3-point Erskine snow blower completely rebuilt, \$750. 1,000 gallon plastic septic tank, new never used \$550. Call Joe 218-586-2101.

Cargo/bike rack for a 2" hitch receiver, 20"x60" with a 2" ball extender, holds up to 3 bikes. \$75/obo. Call 218-760-8266.

Ultra-lightweight folding wheelchair, never been used. \$120. 218-556-7550.

7x16 plus 4' V front wheel fish house: all aluminum tube frame above the steel trailer frame, spray foamed no bunks. Knotty pine interior not quite finished. I have more pine to throw in, nice house, I'm tired of projects. First \$4,500 takes it. Eight holes with covers. 218-766-6238.

New all items, Bandolino boots 8, \$149/\$55, Earth Origins 7 1/2 and 8, \$130/\$60, Emu boots 8, \$199/\$90, boy's jacket 14-16, \$30, full sz. flannel sheets \$80/\$35, king bedspread \$140/\$40, men's shoes 9, \$130/\$60, and 8 1/2, \$130/\$50, men's London Fog coat L, \$35, call 218-368-4973 leave message.

Farm tractor chains from Ford 9N tractor, \$250. Six-foot Hunk of Love Vermont teddy bear, \$100. Large men's Outback Bush Ranger duster, \$125. Fifty Shades Vermont teddy bear, \$40. Itech hockey bag, \$40. 218-759-0186.

Older Franklin parlor stove, never used, good condition. Best offer. 218-407-7247.

Top-of-the-line airline golf club case, rolls with 1-finger. Used once, half price, \$100. Luggage, hard or soft sides, backpacks, duffels, carry-ons, totes. Portable fish house on a sled, \$60. Airplane jigs and gaff hooks, \$5. Large sled for moving heavy items or fish houses in winter, \$20. Artificial outdoor holiday tree, \$10. Assorted ornaments. 218-586-2884.

Old Maytag wringer washer, with extra tub, like new, \$100. 32-ft aluminum extension ladder, \$325. Two metal storage cabinets 60" H and 55" W, 16" D, can be locked, \$200 each. Davenport, 8-ft, stored, medium gray, like new \$300, other furniture available. 218-224-2483.

Hoyt Protec compound bow package: pristine, mint condition. Adjustable 26.5-29" draw length. Fully outfitted with top quality components. Sight, rest, release, case and arrows. New strings when stored away after stopped bowhunting. \$475, 218-444-6014.

Kimball electric organ, 2 keyboards, left foot pedals, lovely wood. \$100. 218-751-7792.

Mattress topper, in original package. King size, 75" x 78" x 1.5." Gel memory foam. 5-zone head/neck/shoulders, back, hips, legs, super comfy! Very briefly used. New \$120. Sell for \$49. Cash only. 218-987-2009.

Magazines: Woodworker, WorkBench, and other early '80s and '90s, \$25. 218-586-3464.

Wanted:

Looking for OLD issues of Beltrami Electric Cooperative's Northern Lights newsletter, between the 1940s-1960s. Please contact Angela at Beltrami Electric or call 218-444-3689.

ATV pull-behind disc, tine drag, or harrow. Text or call Luke at 218-556-0553.

Pet sitting: Retired teacher will take care of your pet, your home or mine. 218-766-6510, leave a message.

Looking for '65-'75 Volkswagen Camper Van for parts, pushup top, any conditions. 218-751-6667.

Reloading equipment for high-powered rifles, including powder, bullets, primers, brass, etc. Call 218-760-8266.

Free:

Oreck 8-pack XL vacuum bags. Please email if interested. Kmzy21@paulbunyan.net.



Need help paying your electric bill?

The Energy Assistance Program (EAP) helps pay for home heating costs and furnace repairs for income-qualified households. We urge you to contact them immediately to avoid disconnection if you feel you are eligible for aid. (Eligibility is based on energy costs, household size and the three most recent months of income.)

Bi-CAP in Bemidji

6603 Bemidji Ave N, Bemidji, MN 56601
218-751-4631

Bi-CAP in Walker

8245 Industrial Park Rd NW, Walker, MN 56484
218-547-3438

KOOTASCA

201 4th St. NW, Suite 130, Grand Rapids, MN 55744
218-999-0824

Leech Lake

115 6th St. NW, Cass Lake, MN 56633
218-335-3783

MAHUBE-OTWA

120 North Central Ave, Park Rapids, MN 56470
218-732-7204

Red Lake

15809 High School Dr., Red Lake, MN 56671
218-679-3350

2022 Maximum EAP Income Guidelines

Household Size	3-month Maximum	Household Size	3-month Maximum
1	\$8,809	4	\$16,941
2	\$11,520	5	\$19,651
3	\$14,230	6	\$22,362

Visit <https://mn.gov/commerce/consumers/consumer-assistance/energy-assistance/> for more EAP income guidelines and program information.

Give the gift of electricity this holiday season!

For that cooperative member who is hard to shop for, or that someone you would like to surprise with a special gift this year, consider making a payment on their Beltrami Electric account! Simply stop into our office to make the payment and receive a nice printed gift receipt to give or send to the recipient.

A gift for you!

A credit has been applied to your Beltrami Electric account!



Member
From: _____
Date Applied: _____
Cert# _____

Cert#

NOTE: Daily cycling of electric storage heat

Members heating with electric thermal storage on the off-peak program, such as thermal storage room units, thermal storage furnaces and slab/in-floor heating, should turn on their heating system prior to Nov. 15 to allow a heat reservoir to build up before daily cycling of loads begins. The actual date daily cycling begins varies each season. Thermal storage heating is controlled each day from 7 a.m. to noon and 5 p.m. to 11 p.m.



We are looking for you!

Beltrami Electric Cooperative is looking for **Sharron E. Pearsall** (Bemidji, Minn.). Please call **218-444-2540** if you have any information.



Beltrami Electric Cooperative will be closed on

Friday, Dec. 24, 2021,
for Christmas Day,

— and on —

Friday, Dec. 31, 2021,
for New Year's Day.

This is hockey territory.

We know the more sticks you have on the ice, the stronger your power play becomes.

That's why we start every season with a deep bench of energy resources.

We're all in on all-of-the-above energy.



ALL IN



ALL-OF-THE-ABOVE ENERGY



Feel the Warmth. See the Savings!

AFFORDABLE, COMFORTABLE, AND RELIABLE

ELECTRIC THERMAL STORAGE HEAT

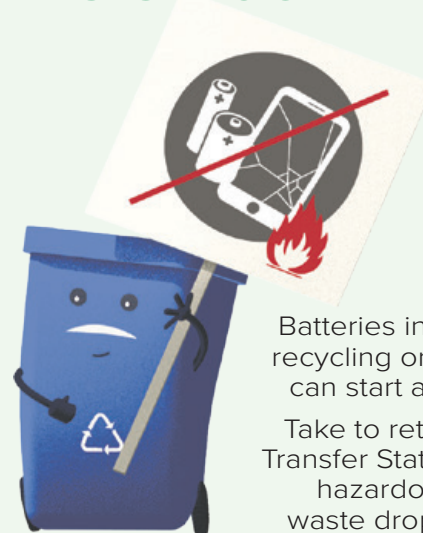
- Efficiently stores warmth in bricks for when you need it
- Comfort Plus Forced Air and Hydronic furnaces
- Provides consistent and uniform heat for any size of room
- Room units eliminate the need for ductwork
- Up to \$75/kW in rebates available



RELAX... IT'S OFF-PEAK HEATING

Contact the energy experts at Beltrami Electric Cooperative, your certified Steffes dealer, to find out how Steffes ETS heat can add efficiency to your home and save you money!

BATTERIES DON'T BELONG IN YOUR HOME RECYCLING OR TRASH!



Batteries in your recycling or trash can start a fire.

Take to retail or Transfer Station for hazardous waste drop-off.

www.co.beltrami.mn.us
click on **Solid Waste** tab



Beltrami Electric Cooperative Inc.

® Your Touchstone Energy® Cooperative 

4111 Technology Dr NW
PO Box 488
Bemidji, MN 56619-0488
218-444-2540 • 800-955-6083
www.beltramielectric.com



THINK ELECTRIC

This Holiday Season

Believe it or not, the holiday season is here and it's time to start gathering gift lists. Whether you're looking for stocking stuffers or the big box under the tree, electric gadgets are always a winner. While things like TVs, video games, smartphones and computers are obvious electric choices, we've put together a list of emerging products that can help your friends and family ditch their old, gas-powered equipment in favor of new electrified technologies. Tools and equipment operated by electricity are often safer, quieter and less costly to operate. **Check out these five electrified gift ideas and feel free to pass the list along to Santa.**



1

ELECTRIC LAWN CARE TOOLS - AVERAGE PRICE POINT: \$75-200

Have you heard the buzz? Electric lawn care tools – like trimmers, edgers and leaf blowers – are quietly proving to be just as mighty as many of their gas-powered counterparts. These items share the same rechargeable battery, which helps cut the stress out of your yard cleanup activities.



2

ELECTRIC PRESSURE WASHER - AVERAGE PRICE POINT: \$150-200

With their lightweight design, quiet operation and low maintenance requirements, an electric pressure washer is a great gift for the DIYer on your list.



3

ELECTRIC SMOKER - AVERAGE PRICE POINT: \$200-300

Who doesn't want a gift that can produce perfect ribs, chicken, brisket or salmon? An electric smoker is easy and safer to use compared to its propane and charcoal counterparts. Even heating and clean operation makes cooking the ideal meal a breeze!



4

ELECTRIC SNOW BLOWER - AVERAGE PRICE POINT: \$500-1,000

Removing snow is part of life in Minnesota/North Dakota. That doesn't mean it needs to be back-breaking work. With an electric snow blower, you don't need to worry about gas, oil or regular maintenance. Instead, you pop in the battery and start it up – making it a great gift for the practical person.



5

ELECTRIC BICYCLE - AVERAGE PRICE POINT: \$500-1,000

An electric bicycle provides the best of both worlds when it comes to outdoor activities. It can be used as a regular bike, or the rider can use the electric motor to reach speeds north of 20 mph without the need to pedal. There are many popular models for commuting, trail riding and other off-road activities.

