

NORTHERN

L I G H T S October 2022

18TH ANNUAL BELTRAMI ELECTRIC TOUCHSTONE ENERGY[®] OPEN RAISES \$11,500 FOR UNITED WAY OF BEMIDJI AREA

The 18th Annual Beltrami Electric Touchstone Energy[®] Open was held Friday, Aug. 19, 2022, at Castle Highlands Golf Course, and raised \$11,500 for the United Way of Bemidji Area. The event saw 24 teams compete in the four-person scramble tournament.

“Beltrami Electric’s Touchstone Energy Open golf tournament has been a staple event for the United Way of Bemidji Area. Not only has the tournament given hundreds of participants the opportunity to support their community, it’s also helped thousands of people in our community to thrive,” said Denae Alamano, executive director for the United Way of Bemidji Area. “We can’t thank Beltrami Electric and their staff enough for the impact their event makes year after year!”

“This event has raised more than \$165,900 for the United Way of Bemidji Area since its inception,” said tournament organizer Angela Lyseng. “We are extremely pleased and grateful to our community, sponsors and participants for their continued support of this wonderful fundraising event.”



FIRST PLACE went to the team of Arnold Pemberton, Jr. with a net score of 52. **Pictured from left:** Brent Pemberton, Sr., Tammy Cartwright, Arnold Pemberton, Jr., and Dan Johnson.



SECOND PLACE went to the team of Paul Bunyan Communications with a net score of 54. **Pictured from left:** Paul Snider, Brian Bissonette, Dane Jones, and Don Dale.



THIRD PLACE went to the team of Brady Martz & Associates with a net score of 55. **Pictured from left:** Matt Wrolstad, Dan Monson, Zach Plante, and Mike Johnson.

Beltrami Electric would like to give a sincere thank-you to the business sponsors, the 92 golfers and the tournament volunteers on behalf of the United Way of Bemidji Area. This event wouldn't be possible without their continued support!



THANK YOU TO THE FOLLOWING SPONSORS!



Bank Forward/Insure Forward
BEC Board of Directors
Bemidji Collision Center
Bemidji State University
Big Apple Bagels
Bill & Cindy Noren
Bob Lowth Ford
Border States Electric
Brady Martz & Associates
Choice Therapy, PA.

Chrysler Center-Bemidji Cooperative Finance Corp.
Countryside Restaurant
Dondelinger GM
Giovanni's Pizza
Gish Construction
Hill's Heating & A/C
IRBY Utilities
Itasca-Mantrap Co-op
Jake Bluhm Insurance Agency
King of the Road Trailers

Kraus Anderson Construction
Krigbaum & Jones
L&M Fleet Supply
Lakes Concrete Plus
Lake Country Power
Land O' Lakes Wood Preserving
Liquor Lodge
Lyseng Logging
Marco
Miller-McDonald

MIX 103.7 FM
National Information Systems Co-op
Nei Bottling/Northern Lakes Vending
Norenberg & Associates
North Central Door Co.
Okonite
Paul Bunyan Broadcasting/HBI
Paul Bunyan Communications

Pinnacle Marketing Group
Raphael's Bakery
Renew PowerClean
RESCO
Riverwood Bank/Riverwood Financial
Sanford Health Bemidji
Security Bank USA
Slim's Bar & Grill
Stittsworth Meats
Top Shelf Hockey
Your QFM

NORTHERN

L I G H T S

Northern Lights (USPS 016488), Vol. 69, No. 10

Northern Lights is published monthly by Beltrami Electric Cooperative Inc., 4111 Technology Drive NW, Bemidji, Minnesota 56601-5128. Subscription rate \$5. Periodicals postage paid at Bemidji, MN 56601.

Postmaster: Please send address corrections to Beltrami Electric Cooperative Inc., P.O. Box 488, Bemidji, Minnesota 56619-0488.

Office Hours: 8 a.m. to 4:30 p.m.
Monday – Friday

Member Service: 218-444-2540
or 1-800-955-6083

www.beltramielectric.com

Board of Directors

Chair	John Lund, DISTRICT 7
Vice Chair	Sue Kringen, DISTRICT 8
Secretary	Murl Nord, DISTRICT 1 (<i>Square Butte Director</i>)
Treasurer	Sharon Lembke, DISTRICT 9
Directors:	Charlie Perkins, DISTRICT 2; Michael Monsrud, DISTRICT 3; Craig Gaasvig, DISTRICT 4; Robert Wallner, DISTRICT 5; Rick Coe, DISTRICT 6 (<i>Minnkota Director</i>)
President and CEO	Jared Echternach
Editor	Angela Lyseng

Minnesota State Electrical Inspectors

Beltrami County

Wade Koons

218-255-3011 - wade@koonsinspections.com

Cass and Hubbard Counties

Brandon Disselbrett

218-640-0187 - disselbrett@hotmail.com

These are the inspectors covering the area served by Beltrami Electric. They can be reached by phone Monday through Friday between 7 and 8:30 a.m. or by email as indicated.

Gopher State One Call 811
1-800-252-1166 or 811
www.gopherstateonecall.org

Anyone who plans to dig is required by law to notify the state of their intentions at least 48 hours in advance.

All digging requires the 48-hour notification so that buried telephone lines, television cables, pipelines, utility electrical lines, and municipal water and sewer lines can be located to ensure that none will be severed or damaged.

Mission of Beltrami Electric Co-op

To provide excellent value to our members through the safe delivery of reliable electric service, excellent member service and innovative energy solutions at fair and reasonable prices.

This institution is an equal opportunity provider and employer.



Celebrating Membership

October is National Co-op Month

by Jared Echternach, president and CEO

Fall is a busy time, and October is a particularly eventful month with school, community and sports activities in full swing. It's also when all cooperatives celebrate National Co-op Month.

When I say Beltrami Electric Cooperative celebrates Co-op Month, it really means we are celebrating you! After all, our co-op wouldn't exist without you, our members.

Our core business purpose is to serve as your electricity provider, but the larger mission of the co-op is to help make our corner of the world a better place. "Concern for community" is one of seven guiding principles that all co-ops share.

Similar to how our wires run through our service territory, our concern for community flows through all of our decisions—because being a co-op means being a responsible partner and good neighbor.

Beltrami Electric Cooperative works to help our communities thrive through initiatives led by our employees and local board that's comprised of neighbors who live right here in our community. Because we're local, we understand our communities' unique needs and strive to help meet them.

We're proud to support local youth through our Youth Tour and scholarship programs. With your help, we offer our Operation Round Up® program to provide assistance to nonprofit organizations making great impacts in our local communities.

The word "cooperative" is close to "cooperation," meaning people working together toward a common goal—mutually benefitting one

another and the larger community. That's the essence of the cooperative spirit. Our employees and member-elected board members are invested in the communities in which we live and serve.

Above all, as a co-op we put our members' priorities first. As your trusted energy partner, we know that saving energy and money is important to you. That's why we have numerous programs in place to help, including MyMeter, home electrical evaluations and our electric heat warranty program.

We want to empower you to manage energy use at home. If you haven't already, I encourage you take a moment and download our SmartHub or MyMeter apps. Through these apps, you can conveniently monitor and manage your energy use. And we're of course here to help, so give us a call if you have questions about your energy bills.



Focused on YOU.

Electric cooperatives were created to serve their members. Because we're a co-op, we're able to adapt and meet the unique needs of our communities. That's the power of co-op membership.

OCTOBER IS NATIONAL CO-OP MONTH

Beltrami Electric Cooperative is continuously examining ways to operate more efficiently while continuing to provide the highest level of friendly, reliable service you expect and deserve. After all, we're your local co-op. We were built by the members we serve.

DON'T FALL FOR CYBER SCAMS

For many of us, the fall season is associated with falling leaves, falling temperatures and falling onto a couch with a warm and cozy blanket. But one thing you shouldn't fall for is cyber scams. October is Cybersecurity Awareness Month and Beltrami Electric wants to share four ways to help protect you from cyber risks. There are several things you can do to be safer online in both your personal and professional life.



WHAT YOU CAN DO to protect yourself from cyber risks

USE TWO-FACTOR AUTHENTICATION



Adding layers of security to access your online accounts has proven to be one of the best ways to protect yourself from malicious cyber activity. Two-factor or multi-factor authentication allows users to confirm who they really are online. Two-factor authentication may come in many forms, including a confirmation text code, an email or even a separate authenticator app.

CONSIDER USING A PASSPHRASE



A new practice for creating strong passwords includes using "passphrases." A passphrase is usually longer than a typical password and includes at least 14 characters with spaces between words. An example of a passphrase could be "secure passw0rds w0rk Great!". Since passphrases are longer and composed of more characters, they are stronger than typical passwords.

DON'T GET TRICKED BY A LINK



Open links and attachments sent to you with caution. If you receive a text message or email that is too good to be true or threatens you if immediate action isn't taken, it is more than likely a scam. If an email comes from a friend or co-worker that seems odd, call the sender and see if they really meant to send the message. Taking the time to verify this information can keep you from being tricked by a link!

INSTALL SOFTWARE UPDATES



Make sure to complete all software updates promptly. Often the updates include protection against the latest security risks. Remember that updates come from apps and not from emails or social media links. If you get an email saying you have a software update, check the app's website to verify if there is one available.

BOARD MEETING HIGHLIGHTS *Beltrami's board conducted its regular monthly meeting Wednesday, Aug. 31, 2022. A quorum of directors was present.*

The following reports were given:

- President and CEO Echternach made his monthly report, including an employee update, legislative candidate meeting, strategic planning and legislative issues affecting the cooperative.
- Arlene Hogquist presented the July financial report.
- Mike Birkeland discussed the annual meeting held Aug. 10, 2022.
- Youth Tour delegate, Ashley Pirkil, spoke about her recent trip to Washington, D.C.
- Mike Birkeland presented the Northern Solar update.

• Angela Lyseng presented on Minnkota's MemberSource website.

• Bob Gregg presented the Incremental Pricing Plan.

• President and CEO Echternach presented on large load and service agreements.

• Vonda Johnson presented on the Retirement Security and 401(k) Pension Plan.

• President and CEO Echternach and the directors shared highlights of meetings attended on behalf of the cooperative and discussed upcoming meetings and events.

The following actions were taken:

- Elected John Lund as chair, Sue Kringen as vice chair, Muri Nord as secretary and Sharon Lembke as treasurer.
- Elected John Lund as governor to Cooperative Development, LLC.
- Approved the consent agenda.
- Approved scheduling the 2023 annual meeting on Aug. 9, 2023, at the Beltrami County Fairgrounds.
- Approved rate schedules and service agreements.
- Adopted a resolution authorizing the amendment and restatement retirement security and 401(k) pension plans.

• Approved to hold December's board meeting on Dec. 19, 2022.

• Approved President and CEO and director expenses.

• Chair Lund appointed John Lund as the RESCO voting delegate with Jared Echternach as the alternate.

The next board meeting will be held Wednesday, Oct. 26, 2022.

AVOID HIGH NATURAL GAS AND PROPANE PRICES WITH OFF-PEAK ELECTRIC HEATING

Minnesota households that relied on natural gas or propane to keep them warm through last year's cold season faced volatile prices that sent their heating bills soaring unexpectedly. One year later, natural gas and propane costs remain high – with the potential to climb higher through the winter.

If the possibility of another price spike has you nervous, there's an easy way to prepare now. Simply incorporate electricity into your heating system and enroll in Beltrami Electric Cooperative's voluntary off-peak program. You'll receive electric heat at nearly half the standard electric rate, which brings your cost for heating well below the cost for natural gas or propane. Plus, the off-peak electric rate has remained stable for nearly a decade, so there are no worries about sudden swings in the market that you didn't work into your budget.

How the valuable off-peak program works:

Beltrami Electric members voluntarily sign up for off-peak, which allows Minnkota (your co-op's wholesale power provider) to temporarily turn off electric heating, water heating, vehicle chargers and commercial account service during times of high regional demand. During these "control periods," most consumers are automatically switched to a backup heating system, generator or stored heat so there is no interruption in comfort.

Electric heat system

An electric heating system on the off-peak program consists of an electric heat source as its main component and a supplemental heating source (such as fuel oil or propane) that will typically operate 250-300 hours per year during times of peak electrical demand in the region. The program can also be utilized in storage heat technologies, in which heat is collected and stored during low-demand times of day and deployed when needed.

Water heater

A water heater on the off-peak program will warm the contents of the tank during lower-demand times of day (often overnight), and that water will remain hot until it is needed in the home.

Popular electric options eligible for the off-peak program:

AIR-SOURCE HEAT PUMP



- Can be used with a backup fuel source for off-peak program
- Eligible for low off-peak rate
- **\$450-\$650 per ton rebate**

ELECTRIC PLENUM



- Backup energy source is necessary for the off-peak program
- Eligible for low off-peak rate
- **\$25 per kW rebate**

THERMAL STORAGE



- Backup fuel source is not needed for the off-peak program
- Eligible for low off-peak rate
- **\$75 per kW rebate**

ELECTRIC WATER HEATER



- Backup fuel source is not needed for the off-peak program
- Eligible for low off-peak rate
- **Up to \$500 in rebates**



Learn more about off-peak by scanning this code or call your cooperative at 800-955-6083.

BUSINESS MEMBER SPOTLIGHT

Beltrami Electric recently welcomed a new member business, Bemidji Steel Company at their new location, south of Bemidji off Highway 71. Bemidji Steel Company manufactures precision metal parts and assemblies with next-generation laser cutting machines, press brakes and more. A growing company investing in tomorrow's technology, they currently have over 30 employees, including sales, client support, manufacturing and trucking.

Beltrami Electric's Business Development team worked with Chief Operations Officer Alex Grasdalen to complete a business lighting rebate and visited about energy efficient heating options for future expansions. For more information about business rebates, contact our office at **218-444-2540**.



Business Development Manager Bob Gregg presents an energy efficiency rebate check to COO Alex Grasdalen and CFO Jane Grasdalen.

ARE YOU READY FOR WINTER?

Last winter was brutal. Countless blizzards and extreme cold weather were made worse by rapid increases in the price of home heating fuels, such as propane, fuel oil and natural gas. With the price of those fuels expected to remain high, it's a good time to consider switching to off-peak electric heating. Off-peak provides your home or business with comfortable, efficient heating, while also protecting you from heating fuel price spikes. The off-peak electric heating rate is remarkably stable in comparison to the alternatives.

So, how does it work? The off-peak program is voluntary for members who allow for their electric heating system to be temporarily controlled and switched to an automated backup resource (like propane or electric storage) during times of peak demand for electricity in the region. In exchange, members receive a discounted electric heat rate, which is about 50% less than standard electricity rate.

Here are a few things we want you to know before the winter season begins.

1) There's still time to switch to off-peak heating

Call our Energy Services Department at **218-444-2540** to discuss your options for adding off-peak electric heating equipment to your home or business. The process is typically simple and straightforward, and your electric cooperative provides great rebates, incentives and other programs to significantly lower installation and equipment costs.

2) There is a potential for earlier-than-normal off-peak load control hours

From now until mid-December, Minnkota Power Cooperative, your electric cooperative's wholesale power provider, will have its largest power plant offline for scheduled maintenance. With this plant not producing electricity, Minnkota may need to utilize off-peak load control to avoid costly electricity purchases from others on the grid. The savings from this practice are passed on to you through the low off-peak rate.

3) Fill your propane or fuel oil tank

Be sure to fill your propane/fuel oil tank as soon as possible, and make sure your tank is large enough to hold an adequate supply. If your propane tank gets low during extreme cold temps, it may not work properly. Remember, prices typically rise as demand increases during the heating season.

4) Check your furnace

Make sure to change your furnace filter regularly. Contact a heating/ventilation/air conditioning (HVAC) professional to inspect/maintain your system as needed. Early attention to maintenance can help prevent failures in the heart of heating season.

Members have had to spend more on energy to heat their homes and for transportation this past year, but the good news is that the price you pay for electricity is forecasted to remain stable. If you have questions about how to save on your winter heating bills or are having issues making payments, please contact our office. We are here to help and can connect you with the right resources, no matter the situation.

CLASSIFIEDS

Classified ads rules

- Ads are due by the first of the month prior to publication of the next issue.
 - o Ads submitted by May 1 will be published in June issue.
 - o Ads submitted between May 2 and June 1 will be published in July issue.
- Ads may be submitted via our website at www.beltramelectric.com. (preferred)
- No real estate, rental, personal or commercial ads will be accepted.
- All ads must be 50 words or less and typed or printed clearly.
- Editor reserves the right to edit or reject any ad.
- Members may only submit one for sale and one wanted or free ad per issue.
- Ads are published at no charge as space permits on a first-received, first-printed basis, with no guarantee your ad will appear.
- Ads are only allowed to be repeated for three consecutive months and must be resubmitted each month.
- Include name and Beltrami Electric account number on all submissions.

For Sale:

Mixed firewood, cut, split, seasoned, near Kelliher. \$60 standard pickup load, you haul. 320-266-1780.

Mixed firewood. Cut in approx 20" pieces. Stack is 20' long, 6 feet high, 7' wide. You load and haul. \$450 cash. 319-327-0063.

Cut and split firewood. Softwood \$60 per pickup load and hardwood \$75 per pickup load, you haul. 218-586-2839.

Mixed hardwoods, all cut, split, seasoned, you load haul, \$75 standard pickup load. 11 miles from Sanford hospital. 218-751-5959.

Mixed Alfalfa bales first cutting 4 1/2 by 5 ft bales, \$40. 218-224-2633.

4' x 5' round bales for sale. Alfalfa and mixed grasses. Good quality. \$55 per bale. You haul. Call 218-751-8191 before 8 p.m.

Diamond compound bow. Bow, case, 9 arrows, quick release, archery target. \$295. 218-556-1205.

Darton SL50 compound bow. 45/60#, 29 1/2"-31" pull, Mongoose 3 pin site, stabilizer, a few target arrows, bow sleeves, cloth case (torn), a few other accessories. \$65. 218-760-3614 leave message.

Youth bow for ages 4-10. Includes practice arrows and hard case. Exc. cond. \$250. Also, Nexen tires, 235/40R19. Set of four tires \$80. Good cond. 218-368-4834.

Martha Stewart 54" glass top outdoor octagon table, antique bronze with brown umbrella (never used), stand and 4 high back mesh chairs (2 still in box), was \$900 new, asking \$350. Call 218-444-9794.

Hardwood twin bed, head/footboard, complete. Folding Queen bed w/mattress. Butcher's meat saw. 2-wheel walker w/tray. New 4-wheel walker w/seat. New Tote dolly w/bag. 10-quart canning jars. Folding lawn chair w/cup holders. Call for details. 218-444-1662.

Graco Tablefit highchair \$80. Very gently used. Bought for my grandchild to use when visiting. 218-766-3834.

Snow blade Bobcat 8ft \$1,500/obo. 218-255-5371.

Like new sleeper sofa (Flexsteel) for sale. Good for country cottage style. Floral with peach, cream and wine colors. Used very little. Nearly \$900 new, asking \$200. Call before 8 p.m. to 218-751-8191.

Riding lawn mower, tractor style 42" cut, runs good, \$700. Also, 14' Crestliner boat, 6 hp Johnson Sea Horse outboard motor, and Snowco trailer, \$1,150. Call 218-760-8266.

1996 14' Lil' Jon Carolina skiff flat bottom boat, great condition! Single seater, army green, utility trailer included. Great for upcoming duck season or wild ricing. Will include 10 duck decoys with purchase! \$1,500, call 218-751-6210.

Yamaha P95 88 key digital piano, stand, bench, used little, exc. condition, \$450. Schwinn bike trailer for kids \$75. Call 218-444-2336.

Beautiful King mission oak bedroom set: king bed, 2 side tables, dresser, chest, \$1,500. 2-10' Pelican kayaks/paddles, \$150 each. 17' Old Town Penobscot canoe, 2 paddles, \$500. Call 701-740-1916.

Weber side burner grill. Hooks up to your natural gas line. No propane tanks needed! We moved into a house that does not have a natural gas hook up. Works great. \$200/obo. Contact Ann at 218-766-1837.

Gas stove 24" wide \$50. Headboard, nightstand, dresser matching, \$200. 14' boat, \$350. Extension ladder, 32', \$175. Thermador 36" outdoor gas barbecue, \$100. 218-224-2483.

1989 Ford F250 4x4, exc. cond., w/8 ft Western Pro plow. \$7,500. 17-ft Grumman canoe and 17-ft fiberglass canoe, \$450 each. 12-ft rowboat w/battery box up front, \$375. Ion 40V ice auger, \$175. Clam ice shacks, \$125. 9.9 older Evinrude, \$425. 7.5 older Evinrude, \$375. Two 15-pound boat anchors, \$15 each. 1,800-pound winch for boat, \$40. Antique cross-cut saw, \$95. 218-214-3159.

Minn Kota Powerdrive foot pedal, \$50. Log headboard and footboard: King, \$280; Full, \$220; Twin, \$200. Lefthand Matthews featherlight compound bow and accessories, \$350. Misc. cabinet hardware (knobs, hinges, pulls) \$20. Handcrafted river table cutting boards. \$55-\$75. Rustic log bench, \$70. 218-368-1895.

John Deere F145 3 bottom semi-mount plow Cat II. Includes hydraulic cylinder. \$600 cash. 612-384-4619.

Gas ice augers: Jiffy 8" model 30, \$100, Jiffy 8" Stealth STX, \$175. New GM running boards for a 4-door truck, black, \$400. 8 1/2 x 10' Sled Bed aluminum snowmobile trailer, \$900. Call 701-335-3010, Bemidji area.

Intermediate Pet Porter \$40. Insulated Pet Porter jacket \$30. Cabela's foldable shooting bench \$70. 218-368-1931.

Octane Elliptical Fitness Machine. The Elliptical machine is the only exercise equipment you need for both legs and arms fitness. Avoid wood ticks, rain and snow and exercise in the comfort of your own home. Stay healthy! Will sell for \$900. 218-759-9339.

WEIHRAUCH Bounty Hunter 44 magnum, holster, cartridge belt, new condition. \$400. 218-760-4700.

30-30 Winchester Model 94. Pre 1964 hardly used. \$900 cash. 218-547-0067.

Snapper LT16 lawn tractor, with front mount snow blower, tire chains, rear weights, and mower deck. Engine runs great, blower works well, deck needs some work. \$400. 218-760-5097.

Thompson Contender Encore 209, 50 cal. black powder rifle, walnut stock, new, w/powder, primers, bullets, and access. \$750. Ruger M77, 270 cal. rifle, 3x9 Leupold scope, etc. cond. \$975. Ruger M77 22-250, 6.5x20 Leupold Vari III scope, new Ruger barrel, tang safety, exc. cond. \$1,250 218-444-2958.

Yakima bike rack for 4 bikes. Slide projector w/carousels. New Dan Bost cowboy boots, new lace up cowboy boots. Leather front end cover and tire cover fits Jeep Liberty. 2 Trek 800 bicycles and helmets. Call 218-556-7997.

John Deere snowblower. Like new. 300 series. 44". Includes weight bracket kit. \$1,200. Call or text 218-556-9418.

Nice walnut finish table, 60" long x 42" wide, + two 18" wide leaves. \$75. Cash only. Call 218-243-2472. Leave message with phone number if no answer.

All new items: Men's Columbia jacket (L) \$120/\$50. Men's bass shoes (8 1/2) \$130/\$50. Men's Levi's jacket (m) \$160/\$55. Boys jacket (14-16) \$85/\$30. Ladie's new shoes: Earth origins (8) \$130/\$60; Born (7 1/2) \$140/\$55; St. John's Bay, black (8) \$100/\$40; Emu boots, black (8) \$199/\$99; Anne Klein (7 1/2), brown \$129/\$55; Bandolino, brown (8) \$149/\$60; Coach, black (8) \$358/\$100. 218-368-4973.

Hunting/fishing clothing: jackets, pants or bibs, coveralls; raingear, rubber boots, caps and scarves, underwear-red, camo, white, reasonable. Game calls, \$10. Case of clay pigeons. Shop vac, \$20. Portable vac for camper or motor home, \$20. Full size cedar chest, \$80. Small chest with decorative duck carving on front, \$30. Small side table, \$10. 218-586-2884.

Homemade quilts: 4-5-6-inch Block, Crazy, Star, Twin, \$40. Full, \$45. Queen, \$65. King, \$70. 3 drawer dresser, been restored. 44" L x 19 1/2" D. (1 drawer is 4" D, 2 drawers are 39" L, 8" D). Sewing machines, \$15 each. Oak rocker, restored, \$75. 218-243-2702.

1920's antique brown wicker sofa and matching brown chair, yellow seat cushions \$400. 218-556-2313 if no answer please leave message.

NordicTrack Act commercial elliptical. Stride adjustment, exc. condition. \$750. 218-766-4435.

Original owner no longer needs DeWALT planer DW733, used not abused, good unit, only \$140. Also, DW7331 dust hood to fit NIB, \$35, take both. Text please 218-391-8204.

Gollie puppy (Golden Retriever/Border Collie). He's six months old and has a super sweet temperament. He's bright and eager to please. He would make a great service dog. I would consider helping train him for this. He'd also make a wonderful family pet. Please call 218-760-3095.

AKC Registered Labrador Retriever puppies. Parents are genetically cleared and OFA certified. Make excellent hunting and family companions. Contact 218-244-7605 for more details.

Wanted:

Used 5' pull behind brush cutter for tractor. 218-835-7484.

Antique bedroom set and antique washstand. 218-835-6591.

Free houseplants. 218-556-2743.

530 John Deere baler or 853 New Holland baler for parts. 218-224-2633.

20-foot-long by 48-inch diameter culvert. Call/text Jason 218-209-0185.

Looking for free magazines by Stampington Company or other art type magazines. Please call 218-987-2499.

Free:

Radial arm saw, DeWALT 12" contractor; on a stand with casters. Table saw, DeWALT 10" contractor, on a floor stand. Power miter box 9". Contact Lynn 218-766-4722.

White snap-on lids for 5-gallon buckets. Call 218-243-2472.

Baldwin piano. 218-760-3963.

4 vintage sewing machines in cabinets. 218-766-9497.

Free piano. Call 218-556-6074.

Free to good homes - KITTENS - Grey; grey and white, or black. Small re-homing fee. Please call 218-760-3095.



Need help paying your electric bill?

The Energy Assistance Program (EAP) helps pay for home heating costs and furnace repairs for income-qualified households. We urge you to contact them immediately to avoid disconnection if you feel you are eligible for aid. (Eligibility is based on energy costs, household size and the three most recent months of income.)

Are you a senior living on a fixed income or suffering from a temporary financial shortfall? Then the following agencies may be able to assist you with your electric bill.

Bi-CAP in Bemidji

6603 Bemidji Ave N, Bemidji, MN 56601
218-751-4631

Bi-CAP in Walker

8245 Industrial Park Rd NW, Walker, MN 56484
218-547-3438

KOOTASCA

201 4th St. NW, Suite 130,
Grand Rapids, MN 55744
218-999-0824

Leech Lake

115 6th St. NW, Cass Lake, MN 56633
218-335-3783

MAHUBE-OTWA

120 North Central Ave, Park Rapids, MN 56470
218-732-7204

Red Lake

15809 High School Dr, Red Lake, MN 56671
218-679-3350

EAP services may include: payment of energy bills, help with utility disconnections or fuel deliveries, repair or replacement of homeowner's broken heating systems, energy efficiency and more.

2022-23 Maximum EAP Income Guidelines
Program year is Oct. 1, 2022 through Sept. 30, 2023

Household Size	3-month Maximum	Household Size	3-month Maximum
1	\$7,643	5	\$17,050
2	\$9,994	6	\$19,401
3	\$12,346	7	\$19,842
4	\$14,698	8	\$20,283

Visit <https://mn.gov/commerce/consumers/consumer-assistance/energy-assistance/> for more EAP income guidelines and program information.

We are looking for you!



Beltrami Electric Cooperative is looking for **Alexander J. Monson** (Bemidji, Minn.), **Patrick L. Urrutia** (Red Lake, Minn.) and **Scott R. Kelley** (Coeur D Alene, ID). Please call **218-444-2540** if you have any information.

VEGETATION MANAGEMENT

A responsible approach to safe, reliable power

The formula for making your electricity reliable includes more than just strong power poles and cutting-edge technology. Trees and other greenery near our energy infrastructure also play a large role – and your co-op, your neighbors and YOU must all work together to keep that vegetation from damaging power lines and cutting off electricity flow.

It's called VEGETATION MANAGEMENT.

Vegetation management creates, promotes and conserves sustainable plant communities while discouraging plants that pose safety and security concerns. Beltrami Electric Cooperative monitors and maintains growth around our power lines to meet regulatory and environmental compliance requirements.

We use vegetation management within and near our line's **RIGHT OF WAY** – or the land under and immediately left and right of the power line. The right of way is a corridor in which no woody vegetation (like trees or shrubs) is allowed to ensure it doesn't grow tall and affect the line. Along the edges of the right of way, we use trained contractors to safely trim any hazardous tree that may grow into the right-of-way corridor. We also occasionally use EPA-approved biodegradable herbicide to clear out brush or noxious weeds that could interfere with service.

Beltrami Electric Cooperative always puts safety first, and that's why proper vegetation management is so important to us! Improperly maintained trees and plants that grow into the right of way can spark fires, create power outages and stop crews from making important and timely repairs.



Plant Trees Safely

Before you dig, call 811 to locate buried utility lines.

LOW TREE ZONE

Avoid planting within **30 ft.** of power lines. If planting is unavoidable, only plant shrubs and small trees that reach a mature height of 15 ft. or less.

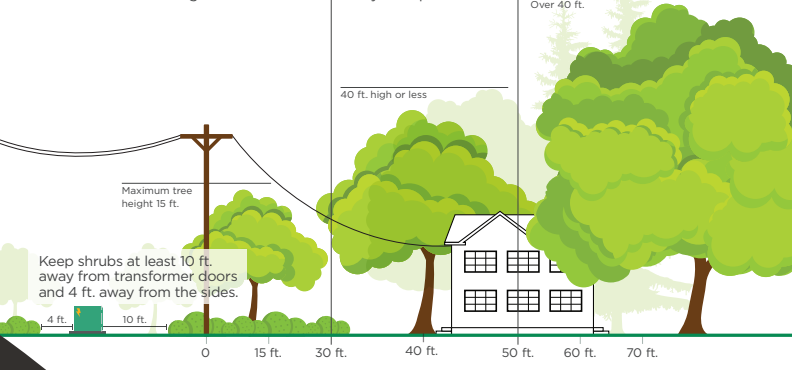
MEDIUM TREE ZONE

Plant medium trees (under 40 ft. when mature) **at least 40 ft.** away from power lines.

LARGE TREE ZONE

Plant large trees (over 40 ft. when mature) **at least 50 ft.** away from power lines.

Over 40 ft.



If you are a landowner, here are some things you should always remember about vegetation management.

- Never try to trim or remove tree limbs if they are anywhere near power lines.
- If you think a tree is growing too close to a line and could be a hazard, or if a tree is diseased, dying or unstable, call your co-op to coordinate a clearing.
- In an emergency, your co-op may need to perform vegetation maintenance without much warning. We will do our best to notify you as soon as possible.
- When planting trees and plants, always look up. Consider how large they will grow and remember that lines can sag on hot days and sway in the wind. The clearance distances required for power lines vary depending on the line voltage – the higher the voltage, the greater the distance.

If you have any questions about vegetation management practices in your area, please give us a call at **218-444-2540 or 800-955-6083!**



Beltrami Electric Cooperative Inc.

Your Touchstone Energy® Cooperative

4111 Technology Dr NW
PO Box 488
Bemidji, MN 56619-0488
218-444-2540 • 800-955-6083
www.beltramielctric.com

Beltrami Electric Cooperative seeking nominations for the 2022 Touchstone Energy® Community Award

Do you know an organization that has made outstanding contributions to our local community?



The 2021 Touchstone Energy Community Award recipient was the Blackduck Community Library Board. The library provides a safe place for area children to spend their spare time while learning new things.

Beltrami Electric is seeking applications for the Touchstone Energy® Community Award, which recognizes businesses, nonprofit and community groups that have shown a strong commitment to their community. Any organization that has helped make their community within the areas served by Beltrami Electric a better place to live and work is eligible for the \$500 cash award.

Community members may nominate an organization, association or business by completing the application form, available online at www.beltramielctric.com or at Beltrami Electric's office. Questions may be directed to Angela Lyseng at **218-444-3689**. The application will require a description of the project, program or event and the positive impact it brought to the community. Completed applications must be received at Beltrami Electric's office by Oct. 31, 2022.

"As an electric cooperative serving this area, we have a high regard for community involvement," president and CEO of Beltrami Electric Jared Echternach said. "This award allows us to highlight and encourage those organizations that have shown an outstanding commitment to our community."

The award recipient will be announced in November and will then contend for the statewide Touchstone Energy Community Award, which has a cash prize of \$2,000. Minnesota Touchstone Energy cooperatives are part of a national alliance of more than 750 rural electric cooperatives in 46 states that adhere to the values of integrity, accountability, innovation and commitment to community.

To see the complete list of past winners, please visit www.beltramielctric.com/touchstone-energy-community-award.



Touchstone Energy® Cooperatives of Minnesota

Statement of Ownership, Management, and Circulation for NORTHERN LIGHTS, dated 9/9/2022. Includes contact information for Angela Lyseng at Beltrami Electric Cooperative Inc.

Table with 2 columns: Category and Amount. Rows include: Total Number of Copies, Paid Distribution, Free Distribution, Total Distribution, and Total Copies (Net of 100,000).

Statement of Ownership, Management, and Circulation for NORTHERN LIGHTS, dated 9/9/2022. Includes signature of Angela Lyseng and date.