

NORTHERN

L I G H T S



**Beltrami Electric
Cooperative Inc.**

Your Touchstone Energy® Cooperative 

July 2023



SAVE THE DATE!

Beltrami Electric's 83rd Annual Meeting BEC Night at the Fair – Wednesday, Aug. 9, 2023



NIGHT AT THE FAIR EVENTS FREE CONCERT IN THE GRANDSTAND | 6:30-8 P.M.

- Annual meeting (5 p.m.) at the Marilyn Shutter Stage
 - * Register for the meeting by 6 p.m. to receive BEC Food Bucks to spend at food vendors that night until 8 p.m.
- Bucket truck rides for kids
- Meet Touchstone Energy® mascots LED Lucy/Solar Sam
- Watch a live high-voltage electrical safety demo by BEC's lineworkers
- FREE parking plus shuttles to the stage

From southwestern North Dakota, the Waddington Brothers have been performing together since 2004. They have performed with such notable artists as the Kruger Brothers, Ron Block and Bobby Hicks. The Waddington Brothers spent many years touring the United States and Canada with their family (nine of them in all) as the Waddington Family, performing gospel music. Music has been in these men's blood since early childhood. In 2009 Ethan won second place in the National Bluegrass Banjo Championship in Winfield, Kansas. Since then, the brothers have performed at Silver Dollar City in Branson, Missouri, they have been featured guests on "Dakota Air, the Radio Show" on Prairie Public Radio and performed for North Dakota Governor Jack Dalrymple's inaugural ball in 2013. The Waddington Brothers are a versatile acoustic group with a musical style that ranges from hard driving bluegrass to the mellow sound and dynamic western harmonies reminiscent of Bob Nolan and the Sons of The Pioneers.



Please join us at the annual meeting

by Jared Echternach, president and CEO

One of my favorite events is coming up on Wednesday, Aug. 9, when Beltrami Electric Cooperative will host our annual meeting for you, the members we proudly serve. I always look forward to this event because it's a great opportunity for us to talk with our members and hear what's on their minds.

We hope you'll join us for the annual meeting, which will take place at the Beltrami County Fairgrounds, under the Marilyn Shutter Country Stage in conjunction with Beltrami County Fair. We made this change several years ago as part of our strategic plan to better engage with our members. The feedback we've



received on the new format and location has been very positive, and it has been a great partnership with the Beltrami County Ag Association.

During the annual meeting, we'll share a few brief business updates including financial reports, information updates and more. But we're going to have a lot of fun too! Greet Touchstone Energy® mascots LED Lucy and Solar Sam, watch our line crews put on a high-voltage electrical safety demonstration and bring your kids for a ride up in the bucket of a line truck. Register by 6 p.m. to receive Food Bucks (vouchers) to use at the numerous food vendors that night until 8 p.m.

Spending time with you and hearing your take on our community's energy future is so important to us. In fact, it's essential because everything we do is shaped by the members we serve. As I'm sure you know, the energy industry is in the midst of massive transformation. Consumer needs and changing

technology impact nearly every aspect of how we manage and deliver energy to local homes, schools and businesses.

As we navigate major changes in the coming years, we need to hear from you and your neighbors to inform our planning as we strive to meet the long-term needs of all Beltrami Electric Cooperative members.

You have a say

You may be wondering if your opinion really makes a difference, and yes, it does! Gaining guidance and perspective from our members and board helps set priorities for the co-op and guide future decisions. That's why we periodically survey our members to understand what's important to them. We then use that information to help guide our strategic planning process.

The annual meeting is also a time for members to vote on the co-op's board of directors. Our board of directors is comprised of nine members who live and work right here in our local service area, so they are in the best position to know where community investments are most needed.

Investing in our communities

Every year, we invest funds to make updates to our distribution system, which helps maintain safety, reliability and grid resilience. By making these investments in our local system, we can ensure you have reliable power for everyday life.

Most members likely don't equate active involvement with their electric company with helping their community. But Beltrami Electric Cooperative is not an ordinary utility company. We're a co-op, and our business model is meant to serve the members and our communities in which it operates.

Our core purpose and mission are to provide safe, reliable and affordable power. But as a co-op, we're also motivated by service to our community, rather than profits. We hope you'll exercise the benefits of your co-op membership and join us for the annual meeting on Wednesday, Aug. 9, 2023, at 5 p.m.

We look forward to seeing you!

OFFICIAL NOTICE OF ANNUAL MEETING

The 83rd annual meeting of the members of Beltrami Electric Cooperative, Inc. will be held at the Marilyn Shutter Stage on the Beltrami County Fairgrounds on Wednesday, August 9, 2023, at 5 p.m., for the following purposes:

1. To pass upon reports covering the previous fiscal year;
2. To elect three (3) directors of the cooperative in accordance with the Bylaws, one each in Districts 2, 4 and 6, each for a three-year term;
3. To transact such other business as may come before the meeting.

Murl Nord, Secretary
Beltrami Electric Cooperative, Inc.
Board of Directors
July 1, 2023

NOTE: *In order for a member corporation, etc., to participate in business matters, a form must be received by the secretary of Beltrami Electric Cooperative on or before the date of the members' meeting(s). To receive a copy of this form, please contact the cooperative at **218-444-2540**.*

BELTRAMI ELECTRIC EMPLOYEE NEWS

Welcome new hire



Adam Huot, son of Mark and Leslie Huot of Solway, recently joined our operations department as a journeyman lineworker. Adam is a graduate of Bemidji High School and Minnesota State Community and Technical College

in Wadena, Minn., where he completed the electrical lineworker program. He previously worked at Red River Valley Co-op Power in Halstad, Minn. Adam enjoys hunting, fishing, golfing and fourwheeling.

Welcome summer intern



Maggie Marcotte, daughter of Jim and Cathy Marcotte of Bemidji, recently joined BEC as a digital media intern. Maggie is a graduate of Bemidji High School and Midland University in Fremont, Neb.,

with a degree in business management and digital marketing. Maggie enjoys hanging out with friends and spending time with her family and her dog, Maple.

Beltrami Electric Cooperative is pleased to announce the addition of two seasonal apprentice lineworkers to our operations department.



Robby Strand, son of Rob and Michele Strand of Bemidji, recently joined BEC in the operations department as a seasonal apprentice lineworker. Robby is a graduate of Bemidji High School and Northwest Lineman College

in Boise, Idaho, where he completed the electrical lineworker program. Robby enjoys hunting, fishing and wake surfing.



Michael Fenwick, son of Michael and Pam Fenwick of Bemidji, recently joined the operations department as a seasonal apprentice lineworker. Michael is a graduate of Bemidji High School and Minnesota

State Community and Technical College in Wadena, Minn. Michael enjoys snowmobiling, dirt biking, and hanging out with friends and family.

Unclaimed capital credits list

These former members may contact Beltrami Electric Cooperative by calling the office at 218-444-2540 or 1-800-955-6083 or via email at info@beltramielectric.com.

ADAMS ESTATE, GUY E.; PLYMOUTH, MINN.
ADAMS, STACY M.; WILLIAMS, MINN.
ALLEN, PHILOMENE; RED LAKE, MINN.
ALLEN, ROGER W. AND NANCY J.; INTERNATIONAL FALLS, MINN.
ALTRINGER ESTATE, PAUL C.; EGAN, MINN.
ALVARADO, DERRICK W. AND CHRISTINE M.; WAUBUN, MINN.
ANDERSON, DIANE; ROSEAU, MINN.
ANDERSON ESTATE, PATSY; BEMIDJI, MINN.
ANDERSON, JEANETTE M.; INVER GROVE HEIGHT, MINN.
ANDERSON, JOANNE; EVELETH, MINN.
ANDERSON, OLIN M. AND CHRISTINE A.; BECIDA, MINN.
APPLIED CONCEPTS COMPUTING; BEMIDJI, MINN.
ARCHER, JOHN; HERMANTOWN, MINN.
ARMBRUST ESTATE, HARVEY; TRIMONT, MINN.
ARNOLD, ROBERT W. AND LINDA; BAGLEY, MINN.
AYDT, DIANE M.; LONGVILLE, MINN.
BACKMAN ESTATE, VANETTA R.; WALKER, MINN.
BAHR, LORI; PINEWOOD, MINN.
BAKER ESTATE, DONALD R.; BEMIDJI, MINN.
BANASZEK ESTATE, JEAN; BAGLEY, MINN.
BAROTT, JAMES A. AND LAURA J.; ELY, MINN.
BAROTT, JAMES A.; ELY, MINN.
BEALL, STACY L. AND TARA; BEMIDJI, MINN.
BEAULIEU ESTATE, BRENDA E.; CASS LAKE, MINN.
BEAUMONT, BERT AND ARLENE; BRAINERD, MINN.
BECKSTRAND ESTATE, ROGER W.; BAGLEY, MINN.
BELT ESTATE, VERA; MORTON, MINN.
BEMIDJI BUILDING CENTER; BEMIDJI, MINN.
BENAISE, MARILYN; REDBY, MINN.
BENSON ESTATE, JOSEPH; GLENWOOD, MINN.
BERG, CHERYL A.; BEMIDJI, MINN.
BEVER, KENT A.; ALEXANDRIA, MINN.
BEYER, TIM S. AND CARRIE A.; BEMIDJI, MINN.
BIXBY, TRACY M.; BEMIDJI, MINN.
BLACK, IDA; REDBY, MINN.
BLAKE, REBECCA S.; BEMIDJI, MINN.
BLAKELY ESTATE, PHILLIP E.; WALKER, MINN.
BLASHILL, RENEE A.; WALKER, MINN.
BLUE ESTATE, ROBERT D.; CASS LAKE, MINN.
BLY, ROBERT; MOOSE LAKE, MINN.
BODIN, TODD A.; DEER RIVER, MINN.
BOHN ESTATE, RANDY; RED LAKE, MINN.
BOMBARDIR, BRAD AND HEATHER; WOODBURY, MINN.
BOOMGAARDEN, LARRY W. AND KATHY E.; GRAND RAPIDS, MINN.
BORGSTROM ESTATE, RICHARD; TOWER, MINN.
BOSANKO, JENNIFER L.; BLACKDUCK, MINN.
BOSSART, MARY JO; WALKER, MINN.
BOURCY, MICHAEL; BEMIDJI, MINN.
BOWSTRING ESTATE, THOMAS; CASS LAKE, MINN.
BRACE ESTATE, DEBRA M.; COTTAGE GROVE, MINN.
BRAMBRINK, ANGIE F.; ISLE, MINN.
BROWN, CHARLES L.; PRIOR LAKE, MINN.
BROWN, JANICE M.; BEMIDJI, MINN.
BRUCE ESTATE, BONITA; WALKER, MINN.
BRUNS VIDEO; RED LAKE, MINN.
BUIENWERF, ERIC J.; BEMIDJI, MINN.
BURGESS, LARRY C.; RAMSEY, MINN.
BURNHAM, GARY A. AND LISA M.; BURNSVILLE, MINN.
BUSH, ROBERTA A.; BEMIDJI, MINN.
CALDWELL ESTATE, ETHA; CASS LAKE, MINN.
CALHOON ESTATE, HELEN; CALHOON ESTATE, COREY; LAPORTE, MINN.
CARLSON, ELIZABETH; WILLMAR, MINN.

CARTER, VERNON W. AND BETTY J.; FARMINGTON, MINN.
CHAPMAN, SHANE L.; BEMIDJI, MINN.
CHENEY, THOMAS H. AND DOROTHY A.; BEMIDJI, MINN.
CHINOOK VENTURES; BEMIDJI, MINN.
CHIPPEWA BIBLE CHURCH; CASS LAKE, MINN.
CHOUNARD ESTATE, ROY Z. AND CHOUNARD ESTATE, BEVERLY J.; TWIN VALLEY, MINN.
CHRISTENSON ESTATE, MAYNARD O.; ST. PAUL, MINN.
CHRISTIANSEN, SHERI L.; BEMIDJI, MINN.
CIROCO ESTATE, CAROL J.; LINDSTROM, MINN.
CLARK ESTATE, CLARK, DAVID A. AND ANN; BECIDA, MINN.
COCHRAN FAMILY; BURNSVILLE, MINN.
COCHRAN, KEITH L.; SHEVLIN, MINN.
COLEMAN ESTATE, KEN J. AND COLEMAN ESTATE, NORMA P.; DETROIT LAKES, MINN.
COLEMAN, KIMBERLY K. AND BRATSCHE, JODY; NEW LONDON, MINN.
COLEN, MARY C. AND LESTER A.; HINES, MINN.
CONNOR, JONATHAN; CASS LAKE, MINN.
COONS, JAMEY AND KOLSTAD, SALLI M.; BEMIDJI, MINN.
COPE, JULIE A.; INTERNATIONAL FALLS, MINN.
CORONA, ROBERT W.; RED LAKE, MINN.
CORRICK ESTATE, LESLIE; WALKER, MINN.
CORRIGAN, MICHAEL L.; MINNEAPOLIS, MINN.
CRAMER, JESSIE M.; CASS LAKE, MINN.
CUMMINGS, MONICA A.; BEMIDJI, MINN.
CURD, RICHARD D. AND TERESA M.; PLYMOUTH, MINN.
CURTIS, CAERA AND GREER, PATRIC; NISSWA, MINN.
CUTBANK, BONNIE L.; PENNINGTON, MINN.
CUTHBERT PAYNE, VALORY; WALKER, MINN.
DAHL, EARL D.; ROSEVILLE, MINN.
DAHLKE LEWIS, SANDY; BEMIDJI, MINN.
DANIELSON, ROGER M. AND DONNA K.; BEMIDJI, MINN.
DAVIS ESTATE, CLARA J.; BEMIDJI, MINN.
DEGROOTE, HOLLI L.; PENGILLY, MINN.
DEMARCO, BLANCA; BEMIDJI, MINN.
DEMARIS ESTATE, BERTUS E.; DELANO, MINN.
DENNIS, JASON T.; BAKER, MINN.
DEVRIES, ADAM; WALKER, MINN.
DEWAELE ESTATE, ANTHONY AND DEWAELE ESTATE, JOAN; OAKDALE, MINN.
DINGMAN, LEA ANN; LITCHFIELD, MINN.
DONNELL ESTATE, GORDON A.; RED LAKE, MINN.
DOUBET, MICHAEL R. AND KAMI L.; BEMIDJI, MINN.
DRELLACK, CURTIS; BEMIDJI, MINN.
DROWN, TINA R.; BEMIDJI, MINN.
DROWN ESTATE, VIRGINIA L.; MINNEAPOLIS, MINN.
DUNBAR, JOHN; BEMIDJI, MINN.
DUTWIGHT HEATING & AC, INC.; WALKER, MINN.
EARL, STEPHAN H.; CHAMPLIN, MINN.
ECK, DEBBIE; GONVICK, MINN.
ECKENRODE, REED F. AND RENAE L.; BEMIDJI, MINN.
EISCHIED ESTATE, MARGARET JEAN; WALKER, MINN.
ELOFSON, GARY L. AND MARIANNE; NORTHFIELD, MINN.
ENGSTROM, LEROY; COKATO, MINN.
ERDMAN, DON C. AND RUTH M.; ELK RIVER, MINN.
ERDRICH, RALPH D.; RED LAKE, MINN.
ERICKSON ESTATE, MANFORD E.; BEMIDJI, MINN.
ERICKSON, JAMES CARL; HINES, MINN.
ERICKSON, JOHN E.; TENSTRIKE, MINN.
ERICKSON, LEIZA K.; BEMIDJI, MINN.
ESTEY, PATRICK H.; BEMIDJI, MINN.

EVANS ESTATE, LYLE R. AND EVENS ESTATE, BARBARA E.; PINEWOOD, MINN.
FAIRBANKS ESTATE, CHARLES S.; BEMIDJI, MINN.
FAWCETT, CHRIS E.; MINNEAPOLIS, MINN.
FAY ESTATE, NANCY J.; CASS LAKE, MINN.
FEDA, DEBRAL L.; BEMIDJI, MINN.
FINCKBONE, LISA M.; BEMIDJI, MINN.
FINEDAY ESTATE, SHARON A.; DULUTH, MINN.
FINEDAY, PATRICIA; DETROIT LAKES, MINN.
FINEDAY, PATRICIA J.; DETROIT LAKES, MINN.
FINNEGAN, MICHAEL AND PAULETTE; COOK, MINN.
FISHER ESTATE, HERBERT AND FISHER ESTATE, JEANETTE L.; WALKER, MINN.
FLECK, ELWIN O.; SAUK RAPIDS, MINN.
FLINT ESTATE, DAWN J.; BEMIDJI, MINN.
FOX, ROGER A.; ANDOVER, MINN.
FUCHS, ROXANN R. AND FLEDHEGE, THOMAS R.; WALKER, MINN.
FUHRMAN, CHARLES D.; SLEEPY EYE, MINN.
GARDNER, SHARON; DEER RIVER, MINN.
GARNETT, R. BRUCE; BEMIDJI, MINN.
GELLINGS, JAMES; MAHNOMEN, MINN.
GEVING ESTATE, ROBERT L.; BEMIDJI, MINN.
GILLUM, JERRY AND KYEA; BEMIDJI, MINN.
GOODBUFFALO, SUSAN; BEMIDJI, MINN.
GOTTHELF ESTATE, HARRY E.; WAYZATA, MINN.
GRANLY, MARGIE E.; BEMIDJI, MINN.
GRAVES ESTATE, RHONDA S.; BEMIDJI, MINN.
GRAVES, JULIE A.; BEMIDJI, MINN.
GREENLEAF, DENNIS; PONEMAH, MINN.
GROSH, KATHERINE A.; BEMIDJI, MINN.
GROSZ, JON D.; BEMIDJI, MINN.
GROTT, BRIAN J. AND CATHY; MONTICELLO, MINN.
GUERNSEY, CYNTHIA A.; CASS LAKE, MINN.
HACKEY, VICKIE A.; BEMIDJI, MINN.
HAGGE, ROBERT P. AND JILL E.; BEMIDJI, MINN.
HALL, TODD D. AND SHEILA; BEMIDJI, MINN.
HALSNE ESTATE, DALE E. AND HALSNE ESTATE, KRISTENE V.; TYLER, MINN.
HAMANN, DONALD P. AND THERESA; WALKER, MINN.
HAMBURG, NICK; BAGLEY, MINN.
HAMLIN, CHRISTA; MOORHEAD, MINN.
HAMMOND ESTATE, RUSSELL, HAMMOND, SOLVEIG; FOREST LAKE, MINN.
HANEVOLD, MARY L.; BEMIDJI, MINN.
HANSON, LISA A. AND CUMMINGS, SHELDON; BEMIDJI, MINN.
HANSON, LISA A.; BEMIDJI, MINN.
HARDISON, MICHAEL J.; BEMIDJI, MINN.
HARRIS, JOHN W.; STILLWATER, MINN.
HAWK, EDITH M.; BEMIDJI, MINN.
HAZELDINE, GABRIEL A. AND BECKY A.; BEMIDJI, MINN.
HEBERT, DANIEL C.; LAPORTE, MINN.
HEIKKILA, LOIS S.; SHEVLIN, MINN.
HELM ESTATE, LOIS; RED LAKE FALLS, MINN.
HENDRICKSON, JEFFREY A.; CASS LAKE, MINN.
HENSEL, SHERRIE; TOWER, MINN.
HERMAN, MARTEE L.; BEMIDJI, MINN.
HERR, JASON; BEMIDJI, MINN.
HIGHT, KIVOK; BEMIDJI, MINN.
HILDE, AARON L. AND LAURA J.; OWATONNA, MINN.
HINMAN, ROB A. AND GILBERT, CARLINE; BEMIDJI, MINN.
HIRDLER ESTATE, LEROY W.; WALKER, MINN.
HJELM, JEFFREY A.; BENEDICT, MINN.
HOCKEMEYER, MARVIN G.; ST. PAUL, MINN.
HOFLAND, ANN C.; BEMIDJI, MINN.
HOGAN, CHRIS P.; DULUTH, MINN.
HOLLER, RENE L.; WALKER, MINN.
HOLM, CHARLES J. AND SHELLEY R.; BEMIDJI, MINN.

HOLTZ ESTATE, PHYLLIS M.; LITCHFIELD, MINN.
HOULE, SHERRY L.; CASS LAKE, MINN.
HOWARD, BRIAN; BLACKDUCK, MINN.
HOWER, BRIAN B.; BLACKDUCK, MINN.
HUD PROPERTY DISP; BEMIDJI, MINN.
HUGHES, ROXANNE; BLACKDUCK, MINN.
HUTCHINS, SHERRY; RED LAKE, MINN.
HUTKOWSKI, TODD; BEMIDJI, MINN.
HUTSON ESTATE, RONNIE T. AND HUTSON, SHARON; BEMIDJI, MINN.
HUTTO ESTATE, FREDDY L.; BLACKDUCK, MINN.
HYLAND, JOHN R. AND LINDA K.; BEMIDJI, MINN.
HYLAND, LYNDA K.; BEMIDJI, MINN.
ICYEMAN, DONALD; PONEMAH, MINN.
IMAGES - JOB STRIDE; RED LAKE, MINN.
ISHAM, FERN M.; CASS LAKE, MINN.
JACKSON ESTATE, CAROLE E.; MINNEAPOLIS, MINN.
JACOBSON ESTATE, JEAN; OWATONNA, MINN.
JAKOBSEN ESTATE, PAUL N.; BECIDA, MINN.
JENSEN, DAVID F.; PARK RAPIDS, MINN.
JOA, DAVID E. AND JOELLEN E.; EAGLE BEND, MINN.
JOHNSON, ADRIA A.; CASS LAKE, MINN.
JOHNSON, DANIEL C. AND TAMMY M.; BEMIDJI, MINN.
JOHNSON, DENNIS A.; MADELIA, MINN.
JOHNSON ESTATE, BILLIE D.; BEMIDJI, MINN.
JOHNSON ESTATE, LORENA M.; CASS LAKE, MINN.
JOHNSON ESTATE, MITCHELL L.; BLACKDUCK, MINN.
JOHNSON ESTATE, WARREN, W. AND JOHNSON ESTATE, BEVERLY M.; CASS LAKE, MINN.
JOHNSON, LARRY E.; BEMIDJI, MINN.
JOHNSON, TONY O.; BEMIDJI, MINN.
JOHNSON, VICKY L.; PONEMAH, MINN.
JOHNSON, WILLIAM L.; CHASKA, MINN.
JONES, DEAN M. AND BETH D.; ANOKA, MINN.
JONES ESTATE, RUSSELL A.; CASS LAKE, MINN.
JONES, MILTON J.; BEMIDJI, MINN.
JORDAN ESTATE, GARY, LEE AND JORDAN ESTATE, CONSTANCE I.; BEMIDJI, MINN.
JORDAN, JON; ROGERS, MINN.
JOURDAN, JON K.; NORTHOME, MINN.
JOURDAN, MAUREEN A.; BEMIDJI, MINN.
JUNGMAN, EDWARD J.; CASS LAKE, MINN.
KAAR, GERALD H.; GRAND RAPIDS, MINN.
KANGAS, MATTHEW; CASS LAKE, MINN.
KEELEY, WILLIAM A. AND DEB K.; BEMIDJI, MINN.
KEITH, DAVID; BEMIDJI, MINN.
KENNE, KERRY RAYMOND; DOVER, MINN.
KERBY ESTATE, JANE Z.; MINNEAPOLIS, MINN.
KIGER, DIXIE LEE; SOLWAY, MINN.
KINGBIRD ESTATE, SANDRA JEAN; PONEMAH, MINN.
KITTELSON, JERRY; FOREST LAKE, MINN.
KITZMAN, MARK AND SANDY; FERGUS FALLS, MINN.
KLARAS, MICHAEL F.; BEMIDJI, MINN.
KNOPPS, JOSEPH AND MEYERS, KINDRA; BEMIDJI, MINN.
KNOX, DUWAYNE; BEMIDJI, MINN.
KONDOS, GREGORY C. AND KIMBERLY K.; BEMIDJI, MINN.
KOSKI, MARK AND RICK, NICHOL N.; ST. LOUIS PARK, MINN.
KRAMER ESTATE, EVELYN B.; WILTON, MINN.
KREMER ESTATE, ROMAN R.; SARTELL, MINN.
KULZER ROPP ESTATE, CARMEN M.; BEMIDJI, MINN.
KURTH, PAUL AND HEATHER; BEMIDJI, MINN.
LAFRANCE, JAMES; BEMIDJI, MINN.
LAKE ESTATE, MARY P.; MINNEAPOLIS, MINN.
LAKE REGION PROPERTIES, WATSON, RICK; BEMIDJI, MINN.
LARSEN, CELESTE S.; CASS LAKE, MINN.
LARSEN ESTATE, ROBERT M.; BELLE PLAINE, MINN.
LARSON, MICHAEL R.; ST. CLOUD, MINN.
LASALLE, LLC; WALKER, MINN.
LAWRENCE, JOHN R. AND JEAN, LAKE GEORGE, MINN.

LEE ESTATE, JOSEPHINE L.; CASS LAKE, MINN.
LENTZ, MARY E.; GOOD THUNDER, MINN.
LEPLEY, CLARK L.; PINE RIVER, MINN.
LILLIE ESTATE, DICK L.; WALKER, MINN.
LINC, FRANK; HOPKINS, MINN.
LINDAHL, JANELLE E.; FREEPORT, MINN.
LINDAHL, STAN E.; BEMIDJI, MINN.
LINDAHL, STAN E. AND JANELLE E.; BEMIDJI, MINN.
LINGEN ESTATE, GARY; WILTON, MINN.
LIPPINCOTT, TODD L.; CASS LAKE, MINN.
LITTLE, BUSTER B. AND BONNIE L.; DETROIT LAKES, MINN.
LOEKEN, LYNDA; MORA, MINN.
LOKEN ESTATE, DIANA; WANNASKA, MINN.
LOXTERCAMP, DANIEL; SAUK CENTRE, MINN.
LUCAS, ROBIN AND ANDERSON, JASON D.; NEVIS, MINN.
LUEKEN, JUDY L.; BEMIDJI, MINN.
LUNDEEN, CHARLES E.; WEST ST. PAUL, MINN.
LUSSIER ESTATE, BARBARA R.; BEMIDJI, MINN.
LUSSIER, FRANK; MOOSE LAKE, MINN.
LUSSO ESTATE, LONNA M.; ST. CLOUD, MINN.
LYONS, FRANCIS J. AND HEIDI J.; CASS LAKE, MINN.
M O CHRISTENSON, INC.; WALKER, MINN.
MABEY, M. JONAS AND LAKOSKY, SARAH; GRAND MARAIS, MINN.
MADSEN, RENE D.; SHEVLIN, MINN.
MAGNUSON, JONATHAN J.; BEMIDJI, MINN.
MANKOWSKI, JACQUELYN; COOK, MINN.
MARDEN, JOANNE; BEMIDJI, MINN.
MARIZ, PATRICIA A.; KERRICK, MINN.
MARLATT, MATTHEW M. AND VALERIE G.; BEMIDJI, MINN.
MARTIN ESTATE, THERESA L.; RED LAKE, MINN.
MARTINSON, NICOLE R.; BEMIDJI, MINN.
MASON, KATHRYN M.; BEMIDJI, MINN.
MATTHEWS, GARY C.; BEMIDJI, MINN.
MATTHEWS, MATT R.; BLACKDUCK, MINN.
MATTSON, CRYSTAL D.; TOWER, MINN.
MAUK, BETTY; MINNEAPOLIS, MINN.
MAVISON ESTATE, GARY; BEMIDJI, MINN.
MCARTHUR, JERRY; APPLE VALLEY, MINN.
MCGAHEE ESTATE, WANDA; BLOOMINGTON, MINN.
MCKAY, MARK P. AND DEBRA M.; BEMIDJI, MINN.
MCKAY, MARK P.; HIBBING, MINN.
MCKENNA, SHANNON MARIE; RED LAKE, MINN.
MCKENNETT ESTATE, RODNEY; CASS LAKE, MINN.
MCKENNETT, NINA C.; OTTERTAIL, MINN.
MILLER ESTATE, WILLIAM M.; WALKER, MINN.
MILTON, PETER A. AND ANN M.; MANKATO, MINN.
MITCHELL, PAMELA K.; NEWFOLDEN, MINN.
MJOLSNES, ALAN D. AND BETTY J.; BLOOMINGTON, MINN.
MOONEY, KAREN M.; BEMIDJI, MINN.
MOORE ESTATE, SALLY G.; EDINA, MINN.
MOORE, JENNIFER S.; BEMIDJI, MINN.
MORNINGSTAR, KATE; BEMIDJI, MINN.
MORRIS, WADE; BEMIDJI, MINN.
MOUNTAIN SR, CARSON LEE; DULUTH, MINN.
MURPHY, DEAN; BAXTER, MINN.
NASON ESTATE, CHARLES W.; BEMIDJI, MINN.
NEADEAU ESTATE, ALVIN; REDBY, MINN.
NEADEAU ESTATE, MYRON D.; RED LAKE, MINN.
NEESE, MARY J.; CLEARBROOK, MINN.
NELSON, AMY AND BJERUM, DEBRA; BEMIDJI, MINN.
NELSON ESTATE, ANGELA S.; MINNEAPOLIS, MINN.
NERUD ESTATE, ELAINE M.; WALKER, MINN.
NESS, WALTER; LAPORTE, MINN.
NICHOL, TODD; NORTHFIELD, MINN.
NICOLAI, CHRIS; BEMIDJI, MINN.
NIGHTINGALE, DIANE M.; BEMIDJI, MINN.
NOLDEN ESTATE, ELMIRE M.; NORTH BRANCH, MINN.
NORENBERG, MYRON; RICHFIELD, MINN.
NORTHBIRD, BRAD S. AND HUMPHREY, BILLIE JEAN; BEMIDJI, MINN.

NSH NORTH; BEMIDJI, MINN.
OAKGROVE, JULIA L.; REDBY, MINN.
OBRIEN ESTATE, JOSEPH J.; AITKIN, MINN.
OFTHELIE DAVIS, DIANE; BEMIDJI, MINN.
OHOTTO ESTATE, LILLIE M.; CAMBRIDGE, MINN.
OLD COYOTE, BARNEY AND CHERYL; MINNEAPOLIS, MINN.
OLDING ESTATE, JULIE M.; BEMIDJI, MINN.
OLEARY, MARIA S.; MINNEAPOLIS, MINN.
OLSON, ALAN M.; BEMIDJI, MINN.
OLSON, ANTHONY N. AND YVONNE M.; CASS LAKE, MINN.
OLSON ESTATE, TERRY AND OLSON, CONNIE; BLACKDUCK, MINN.
OLSON ESTATE, HENRY N.; PLYMOUTH, MINN.
OLSON, REBECCA L.; SARTELL, MINN.
ONSTAD, CHARLES; BEMIDJI, MINN.
OVERBEEK ESTATE, JEANETTE; BEMIDJI, MINN.
PARKER ESTATE, EILEEN C.; ST. CLOUD, MINN.
PARSON, VALERIE M.; GRAND RAPIDS, MINN.
PAULSON, CHRISTOPHER J. AND NEELI R.; BEMIDJI, MINN.
PEDERSON, CARMELLA H.; BEMIDJI, MINN.
PEDERSON, PATRICIA A.; BEMIDJI, MINN.
PEELER ESTATE, JERRY R.; CASS LAKE, MINN.
PEMBERTON ESTATE, JOHN C.; CASS LAKE, MINN.
PETERFISH, REBECCA; BEMIDJI, MINN.
PETERSEN ESTATE, LEE F.; WACONIA, MINN.
PETERSON, BRIAN A. AND TINA; BEMIDJI, MINN.
PETERSON, CHAD AND WENDY; BEMIDJI, MINN.
PETERSON, HEATHER E.; MOORHEAD, MINN.
PETERSON, JAMES R. AND DONNA M.; TRACY, MINN.
PIERCE, ROBERT E.; GLENCOE, MINN.
PLUMAGE, TONY P. AND BELL, DOREEN S.; BEMIDJI, MINN.
POLTA, THOMAS; SPRING LAKE PARK, MINN.

POTTER, WARREN F. AND VIRGINIA M.; CHISHOLM, MINN.
POUR WILLIES, VOELKER, STEVE; EAST GRAND FORKS, MINN.
RAHJA, ERIC D.; CALUMET, MINN.
RAISCH, HEATHER L.; CASS LAKE, MINN.
RASTAD ESTATE, LUCILLE; WALKER, MINN.
RED LAKE VFW POST 6889; RED LAKE, MINN.
REESE, RONALD AND KAREN; AITKIN, MINN.
RICH, RODNEY; BEMIDJI, MINN.
RIST, ROSE; BEMIDJI, MINN.
RITCHIE, JACEE J. AND RANDY W.; TENSTRIKE, MINN.
ROBERTS ESTATE, EDWARD B. AND ROBERTS ESTATE, GLENDA J.; RED LAKE, MINN.
ROBERTS ESTATE, WILMA J.; BECIDA, MINN.
ROBINSON, ANGELA C. AND JAMES R.; BEMIDJI, MINN.
ROBINSON ESTATE, EDWARD E.; BEMIDJI, MINN.
ROMAN ESTATE, WILLIAM L. AND ROMAN ESTATE, CHERYL R.; BLACKDUCK, MINN.
ROSIER, JANIE L.; BEMIDJI, MINN.
ROTH ESTATE, MYRTLE C.; BLACKDUCK, MINN.
ROY ESTATE, PAULA.; RED LAKE, MINN.
RUBIN, KRISTINE L. AND OSHEA, PATRICK; BRAINERD, MINN.
RUSSELL, GINA R.; BEMIDJI, MINN.
SALMONSON, JAMIE R.; BEMIDJI, MINN.
SANDER, JAMES A. AND LAURIE A.; BEMIDJI, MINN.
SANDERS, WILLIAM N.; MINNEAPOLIS, MINN.
SCHMIDT, DAVID M.; BEMIDJI, MINN.
SCHMIDT ESTATE, ROBERT A.; WALKER, MINN.
SCHMIDT ESTATE, WILLIAM G.; BEMIDJI, MINN.
SCHNEIDER ESTATE, LOIS A.; MAPLEWOOD, MINN.
SCHROEDER, WILLIAM T.; WILTON, MINN.
SCHULZ, TOM A. AND JULIE; BEMIDJI, MINN.

SCHWARTZ ESTATE, KATHY A.; VIRGINIA, MINN.
SCHWEITZBERGER, A. D. AND PATRICIA; MENAHA, MINN.
SEDERSTROM, GINA A. AND HILL, JASON; DETROIT LAKES, MINN.
SEELYE, TRACI AND CRAIG; DEER RIVER, MINN.
SEIDEL ESTATE, LEROY; ST. PAUL, MINN.
SEITZ, DERRICK S. AND ANGELA M.; BEMIDJI, MINN.
SHERIDAN, DAROLD J.; ISANTI, MINN.
SIEVERTSON ESTATE, STANLEY; SPRING PARK, MINN.
SIMPKINS, MICHAEL; BEMIDJI, MINN.
SKUNES, RON W.; CASS LAKE, MINN.
SLONE ESTATE, CATHY; BEMIDJI, MINN.
SMALL, DONALD; DEER RIVER, MINN.
SMITH, CLYDE; WALKER, MINN.
SMITH, DANA B.; NEW ULM, MINN.
SMITH ESTATE, ROBERTA J.; PENNINGTON, MINN.
SMITH ESTATE, WALTER J. AND SMITH, ANTOINETTE L.; WOODBURY, MINN.
SMITH ESTATE, WILBERT A.; BAXTER, MINN.
SMITH, LARRY G.; ANOKA, MINN.
SMITH, LISA M.; BEMIDJI, MINN.
SMITH, PAMELA; CASS LAKE, MINN.
SMITH, TROY W. AND MARTINSON, KIM; WALKER, MINN.
SOLEY ESTATE, CLARENCE; BEMIDJI, MINN.
ST ONGE, SUSANNA M.; BEMIDJI, MINN.
STELLIK, ALICE; WALKER, MINN.
STILLDAY, LOREN; PONEMAH, MINN.
STILLDAY, REBECCA L.; RED LAKE, MINN.
STONE ESTATE, CHERYL M.; BEMIDJI, MINN.
STONE, STEVE G. AND JESTINA M.; HOPKINS, MINN.
STORE, VICKIE L.; GLENWOOD, MINN.
STRADTMANN, MICHAEL F.; ST. CLOUD, MINN.

STRIEBEL, WAYNE A. AND JERLENE S.; WALKER, MINN.
STRINGER, HAROLD; MOORHEAD, MINN.
STRONG ESTATE, CAROL ANN; REDBY, MINN.
SWANSON ESTATE, EMMY E.; BABBITT, MINN.
SWANSON ESTATE, GEORGE M.; EDINA, MINN.
SWANSON ESTATE, ROBERT A.; BEMIDJI, MINN.
SWANSON, LEONARD R.; FERTILE, MINN.
SWENSON, SHAWN M. AND CRAIG A.; BEMIDJI, MINN.
SWIGGUM, MARVIN H.; LAPORTE, MINN.
SWINEHART ESTATE, RODNEY A.; SQUAW LAKE, MINN.
TEW ESTATE, DONALD; SOLWAY, MINN.
THEIS, JOE C.; BEMIDJI, MINN.
THIEL, REGGIE L. AND ROXANNE; OTTERTAIL, MINN.
THOMAS, ROGER; BEMIDJI, MINN.
THOMPSON, KIMBERLY J.; DULUTH, MINN.
THOMPSON, SHANE U. AND REBECCA D.; BEMIDJI, MINN.
THOMSON ESTATE, ROBERT P.; BEMIDJI, MINN.
THORNE ESTATE, JANET R.; BLOOMINGTON, MINN.
TILL ESTATE, DARYL; CASS LAKE, MINN.
TIX, GREG J.; SOLWAY, MINN.
TOMPSON, ERRANE; BEMIDJI, MINN.
TOSTENSON ESTATE, C. B. AND TOSTENSON, JEAN R.; ALBERT LEA, MINN.
TOUPIN, GREGORY A. AND CAROLYN L.; BEMIDJI, MINN.
TRIPLETT, WILLIAM J.; CASS LAKE, MINN.
TVERSTOL, HAROLD A.; BEMIDJI, MINN.
URCH, JARED M.; ARLINGTON, MINN.
URSETH, WILLIAM; PRIOR LAKE, MINN.
VARNEY, JOELEEE; BEMIDJI, MINN.
WALKER ESTATE, DON AND WALKER, BONNIE; OWATONNA, MINN.

WALSH, DAVID H.; MOORHEAD, MINN.
WALTMAN, GARY A.; BEMIDJI, MINN.
WAMBHEIM, BRUCE; NORTHFIELD, MINN.
WEBB, WILLIAM A.; BEMIDJI, MINN.
WELTER, CRAIG; BEMIDJI, MINN.
WEPSALA, MICHAEL A.; WALKER, MINN.
WESTERN RELOCATION; BEMIDJI, MINN.
WHIPPLE ESTATE, VIRGIL L.; ROCHESTER, MINN.
WHITE, AGNES J.; MINNEAPOLIS, MINN.
WHITE ESTATE, FRED R.; ONAMIA, MINN.
WHITE ESTATE, RAMONA J.; CASS LAKE, MINN.
WHITE, SHANNON R.; CASS LAKE, MINN.
WIDMAN ESTATE, FLORIAN E.; CLEARWATER, MINN.
WIEBBECKE, EARL AND ASPENSON, BEVERLY; LITTLE CANADA, MINN.
WIEST, HENRY L. PUPOSKY, MINN.
WILDE ESTATE, TRAVIS J. AND WILDE, SARA A.; MAPLE GROVE, MINN.
WILKENS, GARY D.; BLACKDUCK, MINN.
WILLERT ESTATE, HOWARD A. AND WILLERT, KATHRYN A.; BLAINE, MINN.
WILLIAMS, LLOYD; TRUMAN, MINN.
WILLIAMS, RICHARD E.; BEMIDJI, MINN.
WILSON, CHRIS; BEMIDJI, MINN.
WILSON, JACK L. AND SUZANNE M.; ROCHESTER, MINN.
WIRTANEN, ROBIN A.; FOLEY, MINN.
WITTNER, MILLESSA A.; CASS LAKE, MINN.
WOLFE, TAMARA A.; MANKATO, MINN.
WOOSLEY, RAY D. AND MARIE; LAPORTE, MINN.
WRIGHT, GREGORY R.; CASS LAKE, MINN.
WRW INC., ECKSTEIN ESTATE, WAYNE; BEMIDJI, MINN.
YANKOWAK, TOM; MORA, MINN.
YELLOW, TOBIAS; RED LAKE, MINN.
ZELESKE, HARRY L.; MINNEAPOLIS, MINN.
ZENO ESTATE, WARNER; PRIOR LAKE, MINN.
ZILKA, RICHARD L.; MINNEAPOLIS, MINN.

BUSINESS MEMBER SPOTLIGHT

The Party Store



Partystorebemidji.com

Your Premier Party Rental Source in Northern Minnesota!

Beltrami Electric's business development team recently welcomed business members Michael and Lisa Kiewatt, owners of The Party Store, located at 3501 Laurel Dr. NW, in Bemidji. Established in 2014, the business was formerly located on Bemidji Ave., and moved to their new location in April 2018. The Party Store focuses on event planning and rentals, for everything from graduations, birthdays, anniversaries, weddings and more! They have a huge selection of rentals to make your event/party special!

- Tables & chairs
- Table linens and chair covers
- Event decor
- Food service equipment
- Concessions
- Lights and sound system
- China & tableware, barware
- Dance floors
- Photo booths
- Popcorn, cotton candy, slushy, hotdog roller, nacho cheese equipment

They have tents available from 10' x 10' up to 60' x 120'. They are one of three businesses in the midwest to have an exclusive sailcloth tent, for a natural and elegant feel to your wedding or event. They feature beautiful cherry finished woodgrain center and side poles rather than aluminum poles that the standard tents use.

New additions to their rental options include a large selection of inflatables to provide hours of entertainment for kids and adults alike. They have bounce houses, an 18' water slide, an obstacle course, human foosball, a Rock'em Sock'em joust and many more! They invite you to stop by their showroom and let their rental experts help make your special event one to remember.



Classifieds

Classified ads rules

- Ads are due by the first of the month prior to publication of the next issue.
 - Ads submitted by July 1 will be published in August issue.
 - Ads submitted between July 2 and August 1 will be published in September issue.
- Ads may be submitted via our website at www.beltramelectric.com. (preferred)
- No real estate, rental, personal or commercial ads will be accepted.
- All ads must be 50 words or less and typed or printed clearly.
- Editor reserves the right to edit or reject any ad.
- Members may only submit one for sale and one wanted or free ad per issue.
- Ads are published at no charge as space permits on a first-received, first-printed basis, **with no guarantee your ad will appear.**
- Ads are only allowed to be repeated for **three consecutive months** and must be resubmitted each month.
- Include name and Beltrami Electric account number on all submissions.

For Sale:

14' Crestliner aluminum boat with 6 hp Johnson Sea Horse Outboard motor, and Snowco trailer, \$1250. Also other 14' aluminum boats including Lund, MirroCraft, and Alumacraft. Call 218-760-8266.

1997 16.5' Lund Angler SS, 60 hp Evinrude, trailer and cover \$8,000. ShoreStation boat lift \$500. 218-556-0775.

Garage doors two-inch insulated aluminum nine by seven green color excellent condition includes all hardware: overhead springs, tracks, jamb seals, headers. Made by North Central Door Company. Asking \$500 each, new cost is \$1,300. 218-760-7111.

2018 Rockwood GEOPROG19FD Camper, just over 23' in length, 3,000 lbs unloaded, 400-lb hitch wt, no issues with appliances or fixtures, newer tires, in good shape, 2 propane tanks, 1 battery included, recently resealed roof, bathroom fan cover included, \$18,500 excellent condition. 218-556-3277.

14-ft charger sailboat and trailer. Good condition \$600. 813-786-9026.

Fishing equipment, also asst lures (many never used) \$5 ea. Golfing equipment, shag balls, 10 cents ea. Mens' golf shirts, XL, \$5 ea. Exercise weights. Full size cedar chest, \$50. Small decorative storage chest w/duck motif, \$30. Quart jars for hot water bath canning, 25 cents ea. Wooden tomato cages, \$5. 218-586-2884.

1966-1979 Ford F-150 or Ford Bronco to restore. Please call 218-368-4923.

Assorted three-point implements used with 1940's Ford 9N tractor – rear snowblower \$300 – front end loader w/pump \$300 – PTO log splitter \$150 – (rear bucket scoop – 5' disc – 2 bottom plow \$100 each) (6' blade – lift arm \$75 each) 218-854-7453.

Graco Ready2Grow Click Connect Double Stroller – Whitmore. Like new. Purchased from Target. \$75. Photo available upon request. 218-586-2686.

Tropical hardwood about 175pcs, narrow shorts, S4S, reddish brown, hard and heavy. Stored indoors. Some have hard sap bleed. Take all \$85. Text please 218-391-8204.

2 wood classic dressers dark color \$75 each. Queen size mattresses/box spring \$100. 8' tan davenport \$75. 218-224-2483.

2 Peavey amps, 1 large and 1 small, Fender acoustic guitar with stand and digital tuner, brand new never played. More music equipment, call for details, 218-444-1662.

Cedar decking for repurposing: 2 x 6 or 2 x 8 lengths. Make an offer. 218-760-3955.

Engine hoist with new cylinder \$90, air hoses for tools, painting, etc. 2 hoses, \$20 each. 4-jack stands, \$10 each. Mr. Heater Big Buddy used once \$75. 4 Seasons AC compressor fits 96 thru 80 Chevrolet pickups, NIB \$125. Call Steve 218-444-2280.

Generator 8750W elec. start wheels and battery included, like new \$550. 2 pine corner china/curio cabinets, glass on top, 1 drawer, bottom doors. \$180 each or \$350 for both. Small pine roll top desk 4 drawers \$135. Boat bookshelf 4 shelves 7.5' tall very nice \$350. 218-839-4641.

Antique Composition Boudoir doll, 29" tall. Was my mom's. \$50. 218-835-7484.

Youth bow, 3 arrows, hard case. Great for kids 4-10 approx. Can be used for practice and deer hunting. Original owner. Exc. cond. \$150. Also have one set of 4 Nexen tires, 235/40R19. Good cond. \$40. 218-368-4834.

Local, raw honey. \$10/lb. Call Heidi 218-766-6386.

2000 Honda 500 Magnum 4-wheeler, \$2,400. John Deere single stage snowblower, electric start, \$175. 218-766-0437.

Remington Woodmaster model 742 Pelux .30-06 SPRG. With 3-9x40mm Crimson

Trace BrushLine scope with case and one box of shells. \$800. 218-209-6136, please leave message.

Gas pressure washer, 2700 psi, \$175. 21" Insignia Smart TV, \$25. Buzz saw, \$50. Small 6' homemade wood boat, \$50. Call 218-255-7612.

Two new ST175/80R13 five-hole tires. One P205/75R14 six hole. 218-766-2126.

Toshiba e-STUDIO306LP photocopier (like new). Prints with blue ink that can be erased with additional eraser unit included. User guides and new toner cartridge included. \$950/obo. 218-547-1080.

Dining room table with one leaf, \$50. Patio heater, new. \$100. 218-556-8507.

ATV tires, various sizes, \$85/single tire with a good rim. Please call 218-368-9243.

F1 Goldendoodles. Ready now, \$700. Males and females available. Vetted. Cream color. (Mom AKC Golden Retriever/Dad Standard Poodle). 218-766-5031.

Hoyt Xtec bow: Draw 40-80 lbs. 310 fps, 75% let off, mech release, quiver, stabilizer, sights, 9 arrows, broadheads and field tips, soft padded and hard plastic cases, block target. Package: \$400. Collectable: Fred Bear leather quiver, 19 cedar arrows, hunting and field tips, \$100. Lawrence X-51 depth finder/transducer, \$20. 218-243-3375.

Homemade quilts: 4-5-6 Block, Crazy, Star. Twin: \$40, Full: \$45, Queen: \$65, King: \$70. Sewing machines, \$15 each. 3-drawer dresser 44"L x 19½" D. Been restored. \$75. 218-243-2702.

Wanted:

Used tandem axle scissor lift pontoon trailer. Call 218-760-8266.

Need a handyperson to fix mobile home roof after tree fell on it. Email or call. Need as soon as possible. Call 218-751-0213 or email breanalm86@gmail.com.

Older fridge with freezer on top, in good condition. Size-around 20 cu. ft. Preferably a Sears Coldspot or something similar. Also, preferably with a flat/square bottom (no hump/mound in the bottom rear, compressor and components completely underneath). 218-556-5454.

Looking for free purple elephant ear plants. 218-556-2743.



BOARD MEETING HIGHLIGHTS

Beltrami Electric Cooperative's board conducted its regular monthly meeting Wednesday, May 31, 2023. A quorum of directors was in attendance.

The following reports were given at the meeting:

- President and CEO Echternach and the board discussed recent safety successes and observations.
- President and CEO Echternach gave his monthly report, including March and April's financials, employee updates, legislative issues affecting the cooperative, NRECA update, a member concern and the Cooperative Family Fund.
- Arlene Hogquist presented March and April's financial report.
- Arlene Hogquist presented the cooperative's Balanced Performance Scorecard.
- Lee Pemberton reviewed the Rural Electric Safety Achievement Program (RESAP).
- Chair Lund appointed President and CEO Echternach as the CoBank voting delegate.
- President and CEO Echternach and the board shared highlights of meetings attended on behalf of the cooperative and discussed upcoming meetings and events.

The following actions were taken at the meeting:

- Approved the consent agenda.
 - Approved a memorial resolution.
 - Approved a resolution supporting Jared Echternach as a candidate for the CFC Board of Directors.
 - Approved a contribution to the CFC Integrity Fund.
 - Approved a donation to the NRECA International Fund program.
 - Approved director and President and CEO expenses.
- The next board meeting will be held Friday, July 28, 2023.*

The average home in our area can be powered for about \$5 a day – the price of a bottle of sunscreen.

VALUING EVERYTHING THAT POWERS YOUR DAY.

VALUE OF ELECTRICITY

THAT'S THE VALUE OF ELECTRICITY.

HAPPY 4th of July

Beltrami Electric will be closed Tuesday, July 4, in observance of Independence Day

Congratulations

Class of 2023 Beltrami Electric Cooperative scholarship recipients!

Beltrami Electric Cooperative awards scholarships annually to students attending seven area high schools within BEC service territory. To be eligible, the student's parent(s) or guardian(s) must be a Beltrami Electric member and the student must show proof of enrollment in a post-secondary education institution the following year. Each school selected the winners through committees or guidance centers. Beltrami Electric scholarships are funded with unclaimed capital credits that otherwise would be forfeited to the state.



Casey Rupp

Bemidji
High School
(Parents: Corey &
Stephanie Rupp)



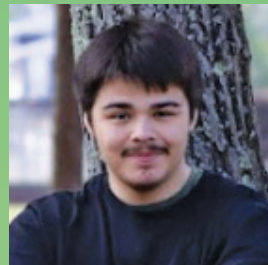
Ella Larson

Blackduck
High School
(Parents: Scott & Rachel
Larson)



Christian Haugen

Blackduck
High School
(Parents: Becky & Craig
Haugen)



Kaydn Lord

Cass Lake-Bena
High School
(Parents: Roberta &
Leland Lord Sr.)



Caraira Jensen

Cass Lake-Bena
High School
(Parents: Trevor & Lisa
Jensen)



Nakomis Mitchell

Cass Lake-Bena
High School
(Parents: Lisa & Jaime
Mitchell)



Evan Waldo

Kelliher
High School
(Parents: Sarah Waldo &
Scott Waldo)



Harley Lahr

Laporte
High School
(Parents: Maria Staples
& Richard Lahr)



Mikaela Howard

Red Lake
High School
(Parent: Jeff
Stately)



Ella Dykema

Walker-Hackensack-
Akeley High School
(Parents: Benjamin & Lisa
Dykema)

**At-large scholarship recipient*

Beltrami Electric also awarded one at-large scholarship to a student who is a dependent of a BEC member, who attends a school other than the seven listed above. This scholarship was awarded based on a combination of academic achievement, work experiences, participation in school and community activities, submission of a 500-word essay and two written letters of recommendation by a third party.



***Mason Derby**

Trek North
(Parents: Marc & Kristi Derby)

Beltrami Electric is pleased to contribute to the further education of students each year. We wish them the best of luck in their studies and careers!

NORTHERN

L I G H T S

JULY 2023 | VOL. 70 | NO. 7

Northern Lights (USPS 016488)

Published monthly by Beltrami Electric Cooperative Inc., 4111 Technology Drive NW, Bemidji, Minnesota 56601-5128. Subscription rate is \$5. Periodicals postage paid at Bemidji, MN 56601.

POSTMASTER: Send address corrections to Beltrami Electric Cooperative Inc., P.O. Box 488, Bemidji, Minnesota 56619-0488.

OFFICERS AND DIRECTORS

ChairJohn Lund, *DISTRICT 7*

Vice Chair Sue Krigen, *DISTRICT 8*

Secretary Murl Nord, *DISTRICT 1*

TreasurerSharon Lembke, *DISTRICT 9*

Directors: Charlie Perkins, *DISTRICT 2*; Michael Monsrud, *DISTRICT 3*; Craig Gaasvig, *DISTRICT 4*; Robert Wallner, *DISTRICT 5*; Rick Coe, *DISTRICT 6*

President and CEOJared Echternach

Office Hours: 8:00 a.m. – 4:30 p.m.
Monday – Friday

Telephone: 218-444-2540 or
1-800-955-6083

Website: www.beltramielectric.com

Email: info@beltramielectric.com

MN STATE ELECTRICAL INSPECTORS

Any time you or an electrician does wiring or other electrical work at your home or farm, Minnesota state law requires a state wiring inspector to conduct a proper inspection of the work. A rough-in inspection must be made before any wiring is covered. A final inspection is also required. Please visit www.dli.mn.org for more information. Inspectors can be reached weekday morning between 7 a.m. and 8:30 a.m.

BELTRAMI COUNTY:

Wade Koons | 218-255-3011
wade@koonsinspections.com

CASS & HUBBARD COUNTIES:

Brandon Disselbrett | 218-640-0187
disselbrett@hotmail.com

GOPHER STATE ONE CALL

1-800-252-1166 or 811

www.gopherstateonecall.org



Anyone who plans to dig is required by law to notify the state of their intentions at least 48 hours in advance. All digging requires the 48-hour notification so that buried telephone line, television cable, pipelines, utility electric lines, municipal water and sewer lines can be located to ensure that none will be severed or damaged.

OUR MISSION STATEMENT

To provide excellent value to our members through the safe delivery of reliable electric service, excellent member service and innovative energy solutions at fair and reasonable prices.

This institution is an equal opportunity provider and employer.



Beltrami Electric Cooperative Inc.

® Your Touchstone Energy® Cooperative

Connecting Communities.
Powering Life.

What does it cost? IT ALL ADDS UP!



Investing in a reliable electric system

The electric co-op industry is capital intensive. We will be featuring a different item each month to help put into perspective some of the costs that go into providing reliable electric service for our members.

How much does it cost to install a standard pole?

a. \$3,500

b. \$700

c. \$2,500

d. \$1,000



Answer: A

* BEC has 19,197 poles on our system. We test and check them annually to ensure they are sound and in good condition. **DO NOT** ever attach anything to poles as this could present a serious safety hazard for lineworkers if a nail or staple snags or tears the gear that keeps them safe. **DO NOT** burn near power poles. Burning poles can cause widespread outages and could be costly for the individual who set the fire.