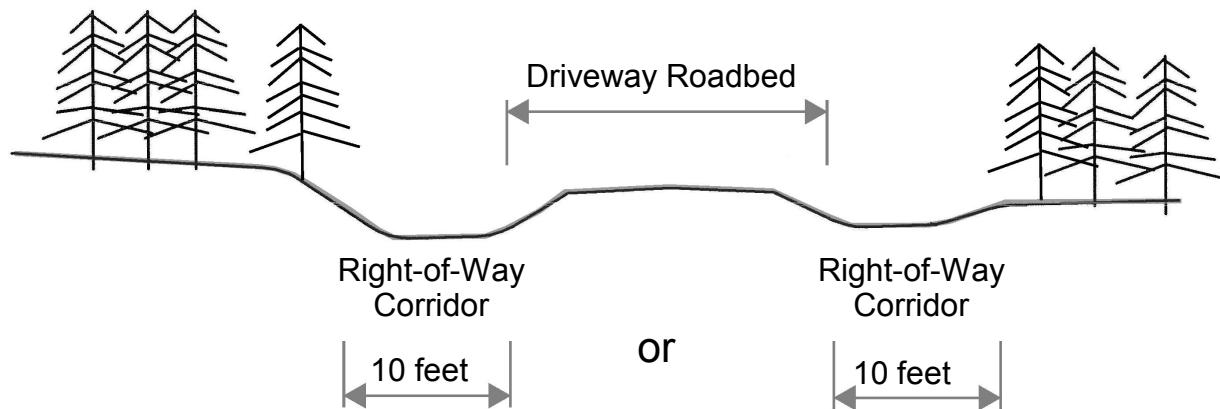


Exhibit A

Typical Cross Section of Driveway & Right-of-Way Corridor



Create a Right-of-Way Corridor

A 10-foot wide Right-of-Way Corridor located on one side of your driveway roadbed is required for the installation of your new electric service.

It is your responsibility to:

- Remove all trees and stumps from the right-of-way corridor
- Ensure that all excavation and embankment of your driveway is close to finished grade.

The cooperative is not responsible for damages to private facilities such as survey markers, cable TV, private electrical, water, sewer, telephone, gas or sprinkler system lines. It is the owner's responsibility to locate and expose their private facilities before construction takes place. Any water lines buried deeper than 48 inches do not have to be exposed. If no locate has been done by the private landowner, the cooperative shall bear no liability if such lines are damaged during construction.