

NORTHERN

L I G H T S

May 2024

ALWAYS STEER CLEAR OF OVERHEAD AND UNDERGROUND POWER LINES



Always look up and look out for overhead power lines. If you or an object you are touching contacts or gets too close to a power line, you could be seriously injured or killed.

Regardless of the task, always keep a 10-foot minimum clearance between you or an object you are holding and an overhead line, including the drop-down service line.

Power lines are buried and run underground as well. Always call 8-1-1 or visit [call811.com](https://www.call811.com) before digging to get underground utilities marked.



Safe
Electricity.org

BE MINDFUL OF POWER LINES WHEN COMPLETING THESE TASKS:

- **Home maintenance:** Examples include cleaning gutters, being on the roof or using extended tools to wash windows or skim a pool.
- **Yard work:** Examples include trimming trees, carrying ladders and digging.
- **Transporting tall objects:** Ladders are not the only extended objects people use outdoors. Be careful any time you move a tall object or tool.
- **Contracted and DIY projects:** If you are planning any project that requires digging, ensure underground utilities are marked.

Look up and look out for overhead power lines and think about what is below them. Contact can happen in an instant.

If there is a damaged/downed power line or padmount transformer (green box), do not go within 50 feet of it.



**Beltrami Electric
Cooperative Inc.**

® Your Touchstone Energy® Cooperative



The value of member engagement

by Jared Echternach, president and CEO



BOARD MEETING HIGHLIGHTS

Beltrami Electric Cooperative's board conducted its regular monthly meeting Wednesday, March 27, 2024. A quorum of directors was in attendance.

The following reports were given at the meeting:

- President and CEO Echternach and the board discussed recent safety successes and observations.
- President and CEO Echternach made his monthly report, including February financials, legislative visits and issues affecting the cooperative, interconnections, USDA Rural Economic Development Loan and Grant program, and the construction work plan.
- Matt Laughlin, Brady Martz & Associates, presented the 2023 audit report giving Beltrami Electric Cooperative a clean audit opinion.
- Arlene Hogquist presented February's financial report.
- Arlene Hogquist presented the 2023 patronage capital margins and allocation.
- President and CEO Echternach reviewed the updates to the Cooperative Service Standards.
- President and CEO Echternach presented a rate analysis.
- Directors and President and CEO Echternach discussed upcoming meetings and events.

The following actions were taken at the meeting:

- Approved the consent agenda.
- Approved the 2023 audit report.
- Approved the 2023 patronage capital allocation.
- Appointed Murl Nord as the alternate governor for Cooperative Development.
- Appointed John Lund to attend the National Rural Utilities Cooperative Finance Corporation (CFC) Forum.
- Approved director and President and CEO expenses.

The next board meeting will be held on Wednesday, May 29, 2024.

Most consumers would not equate active involvement with their electric company with helping their community. But Beltrami Electric Cooperative is not an ordinary utility company. We're a co-op, and our business model is meant to serve the members and the community in which it operates – not to make a hefty profit for investors five states away. Beltrami Electric Cooperative has members, not customers. There's a big difference!

Our core purpose and mission is to provide safe, reliable and affordable power to our members. But as a co-op, we are motivated by service to the community, rather than profits. After meeting our annual expenses, we invest the extra money back into the co-op and the wider community. We depend on the guidance and perspective of our members and board to help set priorities for the co-op and guide governance decisions. At our annual meeting, our members elect directors to represent them. Our board of directors is comprised of nine members who live and work in our service area, for they are in a position to know where community investments are most needed.



Beltrami Electric Cooperative is controlled by members who actively participate in setting policies and making decisions. This is why we value your participation in our annual meeting, scheduled for Aug. 7, 2024, which will

be held again in conjunction with the Beltrami County Fair. I hope you will consider running for the board of our co-op. Beltrami Electric has numerous ongoing programs that impact the community. Every summer, for example, we participate in Youth Tour and send one local high school student to the nation's capitol to meet with lawmakers, enabling students to learn firsthand how our democracy works. We have a scholarship program for graduating high school seniors. In addition, we support events in the local communities we serve. But the decisions and criteria for determining these programs are based on member guidance and feedback.



We recognize the vital role Beltrami Electric Cooperative plays in energizing our local economy. But to continue to innovate and more effectively serve the community, we rely on you, our members, to provide guidance. We value your perspective, and we cannot operate effectively and help our community thrive without you. Please let your voice be heard. Attend the annual meeting, consider joining our board of directors or participate in one of the many community events. For more information about how you can become more involved, please contact me at 218-444-2540.

2024 DISTRICT MEETINGS

TO BE HELD IN LATE JUNE

District meetings are held each year in districts whose directors are up for election. District meetings for members of Beltrami Electric Cooperative will be held in June for Districts 3, 7 and 9. The meetings inform members of current issues and programs associated with the cooperative.

Official business will be conducted at the district meetings, including the nomination of a director candidate. Nominations for qualified candidates from your district to Beltrami Electric's board of directors will be accepted at this meeting. The top two candidates as determined by popular vote will have their names on the general election ballot in August.

If you are interested in seeking a directorship position with Beltrami Electric Cooperative and desire more information, please contact Jared Echternach at **(218) 444-2540** and request a director candidate packet.

***NOTE:** Members seeking to run for the board of directors shall, not less than five (5) business days prior to the district meeting in which there is a director election, submit to the corporate office a completed candidate packet, as provided by the cooperative, by which the cooperative will verify said member's qualifications to be an eligible candidate for the director position.

See the list below for townships in Districts 3, 7 and 9:

DISTRICT 3: Alaska (East and West), Buzzle, Durand, Liberty, Maple Ridge, Nebish, Roosevelt, Turtle Lake

DISTRICT 7: Bemidji (Sections 25 through 36), Frohn (Sections 19 through 36, except 25), Farden, Hart Lake (Sections 1 through 18) and Helga

DISTRICT 9: Leech Lake, Otter Tail Peninsula – NW (Sections 19 through 36), Shingobee – North, Unorganized (T143N R30W), Wilkinson (Sections 19 through 36), Hart Lake (Sections 19 through 36), Hendrickson, Lakeport, Steamboat River

What does it mean to be a director?

As an electric co-op, Beltrami Electric is guided by an elected board of directors which represent its members' best interest when making important decisions. Being a member of the co-op's board is an incredibly important position in our community. A director's decisions will impact issues, such as service rates, rights of way and work plans. This position holds great responsibility and requires men/women who understand their community's needs and serve the cooperative members' best interest. Visit beltramielectric.com/what-does-it-mean-be-director or scan this QR code.



3 **DISTRICT 3**
Vacant
Thurs., June 27
6 p.m.
Beltrami Electric Community Room
4111 Technology Dr NW, Bemidji

7 **DISTRICT 7**
Incumbent John Lund
Wed., June 26
6 p.m.
Nary Community Hall, Helga Township
25895 Hubbard County 9, Bemidji

9 **DISTRICT 9**
Incumbent Sharon Lembke
Mon., June 24
6 p.m.
Lakeport Fire/Township Hall
160 County 39 SW, Laporte







PITCH IN
FOR OUR PARK



A VOLUNTEER EVENT HOSTED BY BELTRAMI ELECTRIC COOPERATIVE

Join us at Lake Bemidji State Park
Thursday, May 16, 3:30 - 7:30 p.m.

-  **Raking, picking up tree debris, cleaning windows, highway cleanup, and more!**
-  **Volunteers are asked to bring their own work gloves and a rake if they have one to use.**
-  **Picnic meal served for volunteers at 5:30 p.m.**
-  **Volunteers can RSVP to Angela at 218-444-3689 or alyseng@beltramielectric.com**

BUSINESS MEMBER SPOTLIGHT

MIDNIGHT SUN POOLS N' SPAS



Established in the early 1990s to cater to the Leech Lake area's need for hot tub services, Midnight Sun Pools n' Spas, under the leadership of CEO Philip Nyhusmoen, has since grown into a thriving enterprise. Phil's journey began in Fargo, N.D., where his skills in electronics and mechanics led him to work for a spa manufacturer. In 1994, he ventured into his own business, servicing pool and hot tub products in Park Rapids, Walker and Bemidji.

The company's humble beginnings started with Phil setting up a hot tub showroom in a tent behind his mother Susan's store, Liten Hus. With a clever deal struck with the tent owner, the showroom soon expanded. By the fall of 1994, the tent was removed, and Midnight

Sun constructed its first showroom and opened in the spring of 1995, marking the beginning of its journey.

Phil's father, Pastor Ken, played a crucial role, hauling hot tubs from Fargo to Walker, merely for a cup of coffee. The company's expansion continued with a temporary store in Bemidji's Paul Bunyan Mall and the leasing of a property from Bemidji businessman Steve Hill.

In 2001, Midnight Sun expanded to the Brainerd market, acquiring an existing business and steadily growing its presence.

Further expansions led to the establishment of a warehouse and distribution facility in Bemidji in 2018 and a state-of-the-art facility in Duluth opening in 2023. When you visit



The Nyhusmoen family: Morgan, Reagan, Phil, Jude, and Abbey.

Midnight Sun today, you will not only find exquisite hot tubs, pools and swim spas, but you will also find a variety of saunas, billiard tables, foosball and other games, patio furniture, a full-service team and so much more.

Jacuzzi named Midnight Sun "Dealer of the Year" in 2023, recognizing Phil and Abbey's passion and dedication to their customers and their team of employees.

Today, led by President Abbey Nyhusmoen, a former registered nurse, Midnight Sun continues to prioritize customer satisfaction and staff development. With a commitment to excellence and a heart-of-a-teacher approach, the company continues to thrive as a small business, dedicated to serving its customers and nurturing its team. Abbey says, "We love being a small business and we believe our customers and staff love that as well."



MIDNIGHT SUN POOLS N' SPAS CO-OP CONNECTIONS OFFER:

10% off chemicals

www.mnspas.com

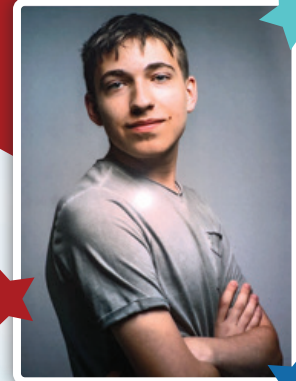
Bemidji Location

(218) 759-8518





Beltrami Electric Cooperative selects **HUNTER WRIGHT** of Laporte as the 2024 Youth Tour Representative



Beltrami Electric Cooperative is excited to announce Hunter Wright of Laporte as its Youth Tour representative for 2024. A junior at Laporte High School, Hunter is the son of Ryan and Holly Wright. He will join hundreds of high school students representing their cooperatives on an all-expense-paid trip to Washington, D.C., June 18-23.

Hunter's selection as the Youth Tour representative showcases his dedication to academics and community service. His application highlighted his strong commitment to both, demonstrating a solid understanding of the benefits of membership in an electric cooperative. Hunter is active in various school activities, including student council, yearbook staff, and National Honor Society, and he contributes to community events and fundraisers for organizations like the Laporte-Benedict Lions Club and the Laporte Fire Department. He is a volunteer for the Lakeport First Responders and enjoys esports, strategy-based games, visual design, 3D arts and printing, and interior design.

Angela Lyseng, Youth Tour coordinator for Beltrami

Electric Cooperative, expressed excitement about Hunter's opportunity to engage with the legislative process firsthand. The Youth Tour not only offers educational benefits but also provides a platform for students to build lasting friendships and develop leadership skills. Participants will undergo leadership training, learn more about electric cooperatives, interact with U.S. Representatives and Senators, and explore Washington, D.C.'s memorials and museums.

For over 57 years, the Electric Cooperative Youth Tour has empowered high school students to explore the nation's capital and gain valuable insights into the cooperative movement. Selection for this esteemed program is conducted by local electric cooperatives, serving as a shining example of the cooperative principles of commitment to community and youth education.

Beltrami Electric Cooperative members are proud to support Hunter as he represents his electric cooperative in our nation's capitol. Congratulations and best wishes for an enriching experience!

Ayla Kranz completes Certified Key Account Executive Program



Congratulations to Ayla Kranz, Beltrami Electric's Business Development Coordinator, on earning her Certified Key Account Executive (CKAE®) certificate. Offered by the National Rural Electric Cooperative Association (NRECA), this program equips key account executives with the skills to manage large commercial and industrial member accounts effectively. Ayla's certification establishes her expertise in key account management, including setting business goals, identifying account profiles, sales management and decision-making. To achieve this, Ayla completed coursework, passed an exam, and submitted business and member engagement plans evaluated by an outside professional for strategic acumen.

Classifieds

Classified ads rules

- Ads are due by the following dates:
 - o **JUNE ISSUE:** Submit by May 6
 - o **JULY ISSUE:** Submit between May 7 and June 5
- Ads may be submitted via our website at www.beltramelectric.com. (preferred)
- NO real estate, rental, personal or commercial ads will be accepted.
- All ads must be 50 words or less and typed or printed clearly.
- Editor reserves the right to edit or reject any ad.
- Members may only submit one for sale and one wanted or free ad per issue.
- Ads are published at no charge as space permits on a first-received, first-printed basis, **with no guarantee your ad will appear.**
- Ads are only allowed to be repeated for **three consecutive months** and must be resubmitted each month.
- Include name and Beltrami Electric account number on all submissions.

For Sale:

2018 Jayco Greyhawk Prestige motorhome, 32' w/2 slides, like new, 7,000 miles, double fridge, 3 TVs, and many extras, below book, \$89,900. For rent: (May-Oct 15, 2024), 20-ft covered boat slip with electric in a protected harbor on Kabekona Bay near Erickson's Landing, \$1,200. Call Gary at 970-901-2605.

Two chocolate brown Flex Steel sofas. Sofas are in excellent condition and recline with power buttons located on the sides. Requires electrical outlets. \$700/sofa obo. TOKAI Upright Black Walnut Piano \$50. 218-759-9339.

8-foot-long, 4-foot-wide flatbed trailer for sale. \$1,000. Call 218-766-4852.

Treadmill, PreCor model #9.21. Well taken care of, 1-15% incline, up to 10 mph. \$125. 218-766-4210.

Day old ringneck pheasant chicks, available last week of May, \$3 each, 218-586-2839

(4) Michelin Primacy LTX 245/50R20 all-season tires. 9/32 tread (very few miles) depth left. \$500/obo. You pick up, you haul. 218-766-2126.

(4) 275/65 18" tires and wheels off 2013 Ford F-150, \$250. (3) P195/65 14" Bridgestone, like new, \$25 each. (4) 15x8 Chev rally wheels, \$120, cash only. 218-243-2497.

Hunter green storm door with full-length glass and screen, 2 hydraulic closers, 2 keys, all hardware included. \$75/obo. 770-500-5057.

Craftsman 5-horse, electric start 22-inch snowblower, \$80. Electric Smith Corona typewriter, \$30. 218-243-3112.

2003 Mercury 25-hp 4-stroke Bigfoot boat motor. Runs great, current service info available. \$3,200. 218-243-3029, lv msg.

ShoreStation boat lift, 3,600# capacity. 9 ft x 9 ft, Lake Beltrami. You move. Make offer. Echo self-propelled lawn and garden vacuum/blower/chipper w/rare flower bed attachment, 8 hp \$575. White desk, stackable 3-shelf unit and storage drawer \$150, Great shape. 320-583-0471.

Beautiful, local, organic flowers. Join our Bouquet CSA. Receive weekly delivery for one monthly price of \$120. (Must be in Bemidji area.) June through September. DIYers call with questions. Call or text for more information. 218-556-0586.

Four family sale. Friday May 10: 9 a.m. to 6 p.m. Saturday, May 11: 9 a.m. to 6 p.m. Port Hope Town Hall, 9779 Hillcrest Dr NE, Turtle River. Various household items. Men's, women's, and kids' clothes. Tools, toys, movies, exercise equipment, plus much more.

Petmate Pet Porter \$35. Insulated kennel jacket \$30 (fits Large Pet Porter). 218-368-1931.

2001 Anniversary Edition Honda Goldwing. Lots of extras, high mileage, etc. cond. \$2,500/obo. 218-556-4662.

Pair of wooden speakers with cords, wall mount, light-colored, \$20. Old AFX Hot Wheels car track set, \$10. Men's golf shirts, L and XL, \$5 each. Golf balls, 10 cents. Shop Vac, \$10. Fishing equipment: rods, reels, baits, landing nets, gaff hooks and more. 218-586-2884.

Onkyo Home Theater Receiver – Model TX-NR757 – never used in box – 180 w/ch – 7.2 ch – 4K UltraHD – \$300. 218-368-7320.

1988 Goldwing GL1500 \$2,500/obo. 60-inch Swisher pull-behind finish mower \$1,200/obo. 218-467-3280.

Must sell due to health: 2 table & chair sets – your choice. Hutch. "Ginny" brand portable oven. Queen-size bed & nightstand. Large T.V. stand. 2 sets of fine China & accessories (white & silver). Call anytime 218-368-3819, leave message and number if no answer.

Great condition – round rug. Mostly brown, tan, and rust. 58x53, \$20. 218-766-8781.

New set (4) of rims/tires (O.E.M.) from 2024 Honda Pioneer side by side. Fronts 25x8-12, rears 25x10-12. \$250. 218-556-9603.

Remington 338 ultra mag. Synthetic stock with Leupold scope, mint. Grey and silver sweet-looking gun. \$1,400. 218-308-1618.

Two beautiful, tufted, tan velvet armchairs. Caning on the sides adds visual interest. Asking \$100/obo per chair. King mattress & box springs: \$600. King bedframe, carved headboard & footboard: \$600. Buy whole set: \$1,000. 218-759-9339.

Wenzel dome tent, great shape, 10' x 12', 5' 10" H, sleeps 4, reinforced polyethylene floor, fly full-screen door, \$55. Brand new, never used. Used aluminum prop, Mercury Spitfire M8026600, 12", 19 Pitch. \$175. 218-760-7111.

16x7 metal garage door. Not insulated, good shape, \$145. Tenstrike. 701-213-9252.

Men's Durango boots, black, new 10½ EE, \$100. 701-636-4169.

2002 19-ft Sea Ray, model 190. Snap covers, Bimini top, 2022 Shoreland'r dual axle trailer. Less than 500 hrs, excellent condition. Not on a boatlift. 218-766-0437.

Wanted:

A camper – an older travel trailer. Around \$1,000 or less. 218-760-1429.

Help needed with yard work, digging flower beds, moving straw, some weeding, and possibly mowing. Would be several hours each week. Near the Becida Bar. 218-854-7333.

Looking for an Ashley (or comparable brand) cabinet-style wood stove in usable condition. Call Ron at 218-556-9350.

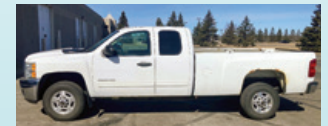
35-46 Dodge pickup or 58-60 Ford pickup, good body with title, running is a plus. Call 218-751-6667.

Free:

Religious VHS tapes. Call 218-751-3632.

Murray Riding mower 13 hp. 40-inch cut, starts and runs well. Leaks some oil. 763-533-1176.

ITEM FOR SALE BY BID



2012 Chevrolet Extended Cab 2500HD work truck. 6.0L, 185,437 miles. **Minimum bid: \$5,000.**

Items are available for viewing at Beltrami Electric's office, 4111 Technology Dr. NW, Bemidji, on the east side of the building, in front of BEC's garage area between **May 13-15, between 8 a.m. and 4 p.m.** Bids will be accepted during this time as well. BEC does not offer any written or implied warranties and reserves the right to reject any or all bids. Items sold "as-is." Cash only. The successful bidder is responsible for all taxes, license, and transfer fees.



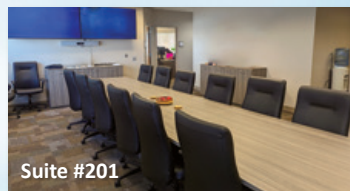
Beltrami Electric's offices will be closed on Monday, May 27, in observance of Memorial Day.

TWO PROFESSIONAL OFFICE SPACES AVAILABLE FOR LEASE

Suite #201: 1,315-square-foot office suite, includes three offices, including a beautiful, bright corner office, reception area, small kitchenette, storage room and a large workspace.

Suite# 203: 923-square-foot office suite, includes three separate offices and a large workspace.

Both are located in a second-floor location, elevator, with an adjacent conference/meeting room. Located in a safe, clean, quiet, low-traffic area of a well-maintained professional building. Will modify these spaces to suit. For further details on these two spaces, contact Mike Birkeland, Beltrami Electric Cooperative, **218-444-3672.**



Suite #201



Suite #203

Beltrami Electric Cooperative's headquarters

Operation Round Up® helps local organizations



The Beltrami Electric Cooperative Trust Board met in April to review Operation Round Up® grant applications, receiving 42 requests amounting to over \$117,650. Following a thorough review, the board awarded \$41,272 to support 26 nonprofit programs and organizations within our communities

- On average, participating members contribute \$0.50 monthly or \$6 annually, with a maximum yearly donation of \$11.88.
- Contributions are tax-deductible and will be reflected on your billing statements.
- Participation is voluntary, and members can opt out or back in at any time by contacting our office.

HERE ARE SOME IMPORTANT DETAILS TO KNOW ABOUT OPERATION ROUND UP:

- The program is run by a board of directors made up of five co-op member volunteers.
- 100% of member donations are used to support local community organizations and improve the quality of life in our region.

Operation Round Up serves as a member-driven initiative by Beltrami Electric Cooperative, allowing individuals to pool their spare change for significant community impact. The next application deadline is **FRIDAY, SEPT. 20, 2024.**

The following organizations were awarded Operation Round Up grants in April:

ORGANIZATION	PROGRAM	GRANT
Bemidji Area Take a Kid Fishing	2024 Bemidji Area Take a Kid Fishing Event	\$ 1,000
Bemidji Career Academies	Bemidji Career Academies and Exploring Program	\$ 3,000
Bemidji Community Theater Starbridge Academy	Play in the Park – Children’s theater	\$ 300
Bemidji Early Childhood Collaborative	Movement and Play program	\$ 1,000
Bemidji High School Marching Band	Parade Weekend – food and lodging	\$ 1,500
Bemidji Middle School Robotics Club	BMS Robotics – Worlds Competition April 2024	\$ 1,250
Blackduck Area Senior Center	Replace flooring in center	\$ 3,000
Blackduck Woodcarvers Festival	Woodcarver’s Festival Community Project	\$ 1,000
Buena Vista Ski Patrol	Toboggan transport device	\$ 2,000
Concordia Language Villages	Bemidji Area – Fourth- and fifth-grade essay contest	\$ 1,000
Evergreen Youth & Family Services, Inc.	Evergreen Youth Shelter security system upgrade	\$ 1,600
Great River Rescue	Electronic communication and record-keeping equipment replacement	\$ 1,300
Headwaters School of Music and the Arts	Enhancing Community Mobility: Installation of permanent secure bike stand at Headwaters Music & Arts	\$ 500
Headwaters Science Center	Augmented reality sandbox	\$ 2,000
Heartland Christian Academy	Fire safety upgrade	\$ 2,000
Kelliher Mustang Golf Team	Golf team / Community golf simulator	\$ 1,000
Kelliher Kids Childcare Center	Summer program for school-age kids	\$ 1,217
Kelliher Library & Information Center	Kelliher Days – Marching band for the kids parade	\$ 705
Level Ground – The Door	New entrance deck for The Door Homeless Shelter	\$ 2,500
North Beltrami Heritage Center / City of Kelliher	The New Deal: Speaker and WPA exhibit	\$ 600
Northstar Shooting Sports Club	Rebuild club roadway	\$ 1,500
Oak Hills Christian College	AED for the athletic field	\$ 1,500
Society of St Vincent de Paul-St Phillip’s Conference	Hope in Bemidji program	\$ 3,000
The Nature Connection	Educational materials for the Nature Connection	\$ 800
United Way of Bemidji Area	Backpack Buddies Expansion to Serve	\$ 3,000
United Way of Bemidji Area	Wheels to Work: Fueling Opportunities to Thrive	\$ 3,000

SMALL CHANGE makes a Big Difference!

WAIT!



! Do not overload power strips by plugging in appliances that consume more watts than the cord can handle. This can cause the power strip to overheat or start a fire.

DON'T PLUG THESE 15 THINGS INTO A POWER STRIP

It is fine to plug some things into a power strip, such as computers, lamps, phones and other light-load electronics.

However, appliances that require a lot of power should not be plugged into a power strip. Do not use a power strip with the following appliances:

IN THE KITCHEN

- ✗ Refrigerators
- ✗ Microwave ovens
- ✗ Toasters
- ✗ Coffee makers
- ✗ Slow cookers
- ✗ Rice cookers

IN THE LAUNDRY ROOM

- ✗ Washing machines
- ✗ Dryers

IN THE BATHROOM

- ✗ Hair dryers
- ✗ Curling irons
- ✗ Other hairstyling tools

ANYWHERE

- ✗ Sump pumps
- ✗ Space heaters
- ✗ Portable air conditioners



NORTHERN

L I G H T S

MAY 2024 | VOL. 71 | NO. 5

Northern Lights (USPS 016488)

Published monthly by Beltrami Electric Cooperative Inc., 4111 Technology Drive NW, Bemidji, Minnesota 56601-5128. Subscription rate is \$5. Periodicals postage paid at Bemidji, MN 56601.

POSTMASTER: Send address corrections to Beltrami Electric Cooperative Inc., P.O. Box 488, Bemidji, Minnesota 56619-0488.

OFFICERS AND DIRECTORS

ChairJohn Lund, *DISTRICT 7*

Vice ChairSue Kringen, *DISTRICT 8*

SecretaryMurl Nord, *DISTRICT 1*

TreasurerSharon Lembke, *DISTRICT 9*

Directors: Charlie Perkins, *DISTRICT 2*;
Vacant, *DISTRICT 3*; Craig Gaasvig,
DISTRICT 4; Robert Wallner,
DISTRICT 5; Rick Coe, *DISTRICT 6*

President and CEOJared Echternach

EditorAngela Lyseng

Office Hours: 8:00 a.m. – 4:30 p.m.
Monday – Friday

Telephone: 218-444-2540 or
1-800-955-6083

Website: www.beltramielectric.com

Email: info@beltramielectric.com

MN STATE ELECTRICAL INSPECTORS

Any time you or an electrician does wiring or other electrical work at your home or farm, Minnesota state law requires a state wiring inspector to conduct a proper inspection of the work. A rough-in inspection must be made before any wiring is covered. A final inspection is also required. Please visit www.dli.mn.org for more information. Inspectors can be reached weekday mornings between 7 a.m. and 8:30 a.m.

BELTRAMI COUNTY:

Wade Koons | 218-580-8589
wade.koons@state.mn.us

CASS & HUBBARD COUNTIES:

Tony Kohrs | 218-616-1554
kohrsinspection@paulbunyan.net

GOPHER STATE ONE CALL

1-800-252-1166 or 811

www.gopherstateonecall.org



Anyone who plans to dig is required by law to notify the state of their intentions at least 48 hours in advance. All digging requires the 48-hour notification so that buried telephone line, television cable, pipelines, utility electric lines, municipal water and sewer lines can be located to ensure that none will be severed or damaged.

OUR MISSION STATEMENT

To provide excellent value to our members through the safe delivery of reliable electric service, excellent member service and innovative energy solutions at fair and reasonable prices.

This institution is an equal opportunity provider and employer.



Beltrami Electric Cooperative Inc.

® Your Touchstone Energy® Cooperative

Connecting Communities.
Powering Life.

ASK THE EXPERT!



CAN YOU EXPLAIN THE CHARGES ON MY BILL? (PART 3 OF 3)



Leslie Huot
Member Service Representative

Yes! Simply put, your bill is split into two parts: **fixed cost** and **variable cost**. We shared details about the fixed cost in the March Northern Lights and the variable cost in the April Northern Lights.

Other charges members will see on their bill include **sales tax** collected for state, county and city. Sales tax applies to most retail sales of goods and some services in Minnesota, including the purchase of electricity.

Members may also see a **Bemidji Franchise Fee**, which is a direct pass-through charge from the city of Bemidji for all electric services located within the city limits.

DID YOU KNOW?

Electricity sold for residential use in Minnesota is not taxable for the billing months of November through April when sold to members who use electric heat as their primary heat source. Members with an off-peak meter are only exempted from sales tax on the electricity that is recorded on the off-peak meter.

If you have additional questions, please contact our office at **218-444-2540** or email info@beltramielectric.com.



Scan the QR code to learn more about the Electric Heating Sales Tax Exemption or visit beltramielectric.com/residential-electric-heat-sales-tax-exemption.