

NORTHERN

L I G H T S

June 2024

JOIN US FOR CO-OP CONVERSATION AT 2024 DISTRICT MEETINGS

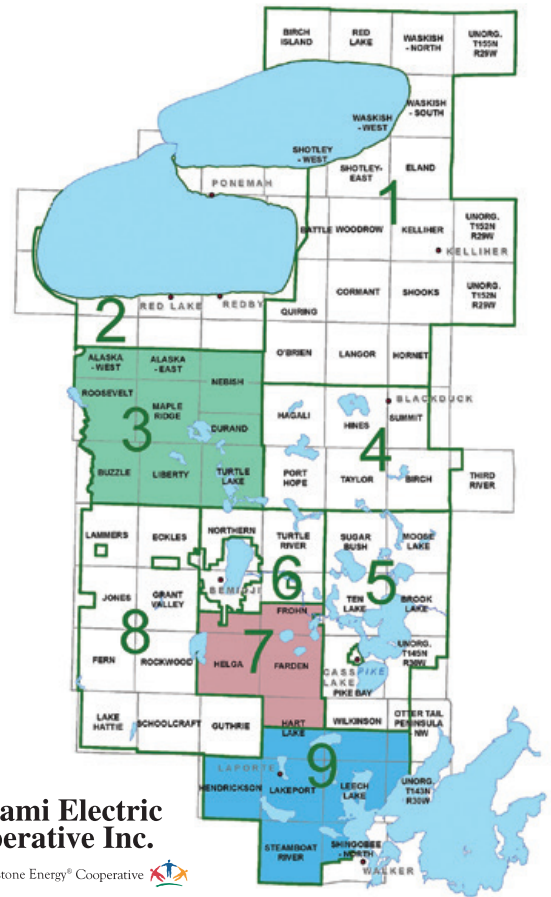
Members are invited to join Beltrami Electric Cooperative and your elected directors at the 2024 district meetings this month. Meetings start at 6 p.m., with a co-op update and time for member questions. Refreshments and cookies will be provided.

District meetings are held each year in districts whose directors are up for election. District meetings for members of Beltrami Electric Cooperative will be held in June for Districts 3, 7 and 9.

Official business will be conducted at the district meetings, including the nomination of a director candidate. Nominations for qualified candidates from your district to Beltrami Electric's board of directors will be accepted at this meeting. The top two candidates as determined by popular vote will have their names on the general election ballot in August.

If you are interested in seeking a directorship position with Beltrami Electric Cooperative and desire more information, please contact Jared Echternach at **(218) 444-2540** and request a director candidate packet.

***NOTE:** Members seeking to run for the board of directors shall, not less than five (5) business days prior to the district meeting in which there is a director election, submit to the corporate office a completed candidate packet, as provided by the cooperative, by which the cooperative will verify said member's qualifications to be an eligible candidate for the director position.



3 **DISTRICT 3**
Vacant
Thurs., June 27
6 p.m.
Beltrami Electric Community Room
4111 Technology Dr NW, Bemidji

7 **DISTRICT 7**
Incumbent John Lund
Wed., June 26
6 p.m.
Nary Community Hall, Helga Township
25895 Hubbard County 9, Bemidji

9 **DISTRICT 9**
Incumbent Sharon Lembke
Mon., June 24
6 p.m.
Lakeport Fire/Township Hall
160 County 39 SW, Laporte

Members are encouraged to mark their calendars for BEC's annual meeting. The meeting will be held at 5 p.m. on Wednesday, Aug. 7, at the Marilyn Shutter Country Stage at the Beltrami County Fairgrounds.



EPA rule threatens reliability and affordability

by Jared Echternach, president and CEO

On April 25, 2024, the Environmental Protection Agency (EPA) finalized rules to limit greenhouse gas emissions from existing coal and new natural gas power plants. Starting in 2032, the rules require increasingly stringent carbon dioxide (CO₂) emissions controls at coal and natural gas power plants, unless they shut down or curtail their operations. Requirements vary based on the type of unit, how frequently it operates and how long it will operate into the future. This final rule does not include greenhouse gas standards for existing natural gas units, which had been part of EPA's May 2023 proposal.

Unlawful, unrealistic and unachievable

These rules contain timelines that are unrealistic and unachievable. The compliance deadlines endanger grid reliability and all but ensure the majority of the nation's coal generation fleet will need to move toward closure within the next decade.

The required infrastructure for compliance cannot be expected to be in place due to cost, supply chain challenges, permitting, public opposition, land ownership/access and more.

The rule will be challenged on whether carbon capture and sequestration technology is "adequately demonstrated" and "achievable." The rule violates the Clean Air Act because EPA asserts vast new authority of major economic and political significance without a clear statement from Congress. This disregards the "major questions doctrine" and is inconsistent with the text, structure and context of the Clean Air Act.

Reliability at risk

EPA's rules will magnify today's reliability challenges with grave consequences for an already stressed electric grid. They are unrealistic and unachievable, and they will reduce key generating resources just as Americans are increasing their reliance on electricity.

Assuming we can generate more electricity to power our economy with fewer resource options is a losing strategy. The U.S. is projecting significant electricity demand growth through artificial intelligence, data centers and general commercial/lifestyle electrification.

These rules will result in the rapid and disorderly retirement of power plants across the nation, which will exacerbate electric grid reliability issues we're already facing. Grid regulators and operators are sounding the alarm on grid reliability issues. EPA's rules will make the situation much worse.

Potentially significant impact on rates

The premature retirement of reliable power plants would strand major assets and investments. Cost increases would be required to retrofit existing facilities or to move toward new resources on an unplanned and expedited basis. This means electric consumers would need to pay for past resource investments and required future resource investments at the same time on an accelerated timeline.

The compressed timeframes are increasingly difficult as the world continues to face supply chain challenges, inflationary pressures and labor shortages. Under these rules, any decision will require major investments, which will necessitate rate increases, especially in a cooperative structure.

Project Tundra

Minnkota Power Cooperative, our wholesale power supplier, is in the final stages of development on Project Tundra, a carbon capture and sequestration project designed to capture more than 4 million tons of CO₂ annually. Despite the uncertainties created under these rules, Minnkota remains committed to working toward a decision in 2024 on whether to move forward with construction. More analysis and research will be completed to understand Project Tundra's role as a potential compliance mechanism.



Leadership in the development of carbon capture technology must come from the United States if the world is going to meet ambitious decarbonization goals. The success of Project Tundra can serve as a blueprint for how to drive down emissions while preserving grid reliability and resiliency. Minnkota remains confident in carbon capture technology, but also realizes it is not yet widespread or commercially available and has not been "adequately demonstrated" as required by the Clean Air Act. Project

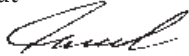
Tundra has many advantages (onsite storage, North Dakota support, ideal geology, etc.) that many states do not.

Project Tundra leaders are committed to collaborating with future CO₂ capture project developers to ensure the technology can be replicated and continually improved. The EPA rules will only serve to stifle innovation and take environmental solutions off the table.

Annual and District Meetings

This year's annual meeting will be held Wednesday, Aug. 7, at the Beltrami County Fairgrounds in conjunction with the Beltrami County Fair. We are delighted to partner again with the Beltrami County Fair board to host our annual meeting.

As part of the election process, your cooperative will hold three district meetings in June, at which candidates may be nominated to serve on the board. Seats in District 3 (currently vacant), District 7 (currently served by John Lund), and District 9 (currently served by Sharon Lembke) are up for election this year. Each of the incumbents has indicated their interest in running. Candidates interested in running for the board must complete and submit to the cooperative a candidate packet no later than five business days prior to the district meeting in which the candidate seeks to run. Please see the detailed information on page one for meeting locations, dates and times. If you are interested in learning more about serving on your cooperative's board, please feel free to contact me to request a director candidate packet. Additional information can be found on our website at www.beltramielectric.com.

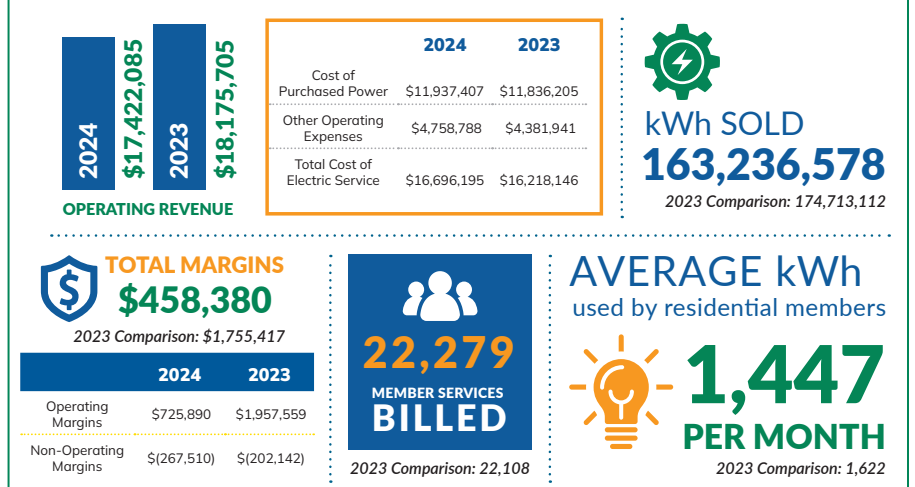


SAVE	ANNUAL MEETING
AUGUST 7 2024	THE
DATE	Marilyn Shutter Stage  Beltrami County Fairgrounds

Registration Opens at 4 p.m.

BY THE NUMBERS | Q1 2024

Beltrami Electric Cooperative's leadership spends substantial time managing and providing oversight of the Co-op's operations, including ensuring that the organization remains in a strong and stable financial condition. Below is an overview of our First Quarter Unaudited Financial Report.



Join us for an unforgettable evening at the Grandstand!

Don't miss this free Concert in the Grandstand at the Beltrami County Fair - Wednesday, Aug. 7 | Time: 6:30 p.m.

Beltrami Electric proudly presents Figuring It Out, featuring the talented Abello Acoustics Band, a family ensemble that promises to captivate audiences with their diverse musical repertoire.



About Figuring It Out: Figuring It Out is a dynamic musical group that embraces an eclectic mix of genres, including swing, bluegrass, traditional folk, Celtic melodies, contemporary hits, Sons of the Pioneers classics, '50s pop and more. With a passion for acoustic soundscapes, the band delivers performances that resonate with listeners of all ages.

Meet the band: Experience the magic of Figuring It Out, composed of Louisa on guitar, piano, accordion and vocals; Olivia on upright bass, cello and vocals; Elijah on the five-string fiddle, upright bass and vocals; Adelynn on mandolin, banjolin, guitar, upright bass and vocals; Abram on banjo, guitar, upright bass and vocals; Greta on ukulele and vocals; Georgiana on fiddle and vocals; Hazel on guitar and vocals; Gideon on banjo and vocals; and Andy on fiddle and vocals.

Don't miss this opportunity to enjoy an evening of enchanting melodies and harmonious rhythms during this year's Beltrami Electric Night at the Fair. Admission is free, so bring your family and friends for a night to remember! We look forward to seeing you there!

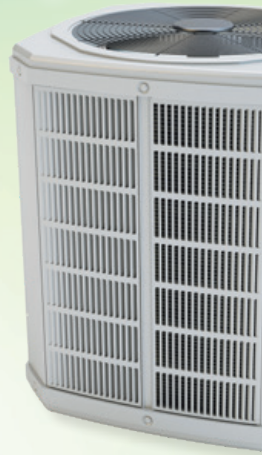
THE POWER OF OFF-PEAK:

A benefit for members, the co-op and the grid

Off-Peak. It's a term we use often at Beltrami Electric. You might also hear it called load management, dual fuel, or rippling. More on "rippling" in a moment.

What does Off-Peak mean? In a nutshell, it's a program BEC offers to members at a reduced rate in exchange for the ability, or flexibility, to turn off specific loads during periods of high electrical demand.

BEC controls participating loads through a device called a "ripple" load control receiver, which receives commands over the power line to signal when there is a need to control loads assigned to the Off-Peak program. Off-Peak load control is only tied to specific qualified loads in your home (like heating, water heating or car charging) - so the necessities of lights, lamps and electric outlets to charge your phone are not affected.



ULTIMATELY, OFF-PEAK RESULTS IN A WIN-WIN-WIN FOR MEMBERS, THE CO-OP AND THE GRID.

- 1. It's good for your pocketbook.** Members who participate in the off-peak program receive a discounted rate and can receive great rebates for the installation of qualifying equipment.
- 2. It's good for the co-op.** It helps reduce the overall cost of power by lowering BEC's peak electricity use during high-use, high-cost times of the day, month or year.
- 3. It's good for the grid.** This helps Beltrami Electric Cooperative and our wholesale power supplier, Minnkota Power Cooperative, balance demand as well as supply of electric generation when electricity use is high across the entire grid. It increases the efficiency and effectiveness of our generation resources.

THE BENEFITS TO MEMBERS WHO PARTICIPATE IN "OFF-PEAK" PROGRAMS ARE NUMEROUS AS WELL.

- **FIRST** - participants receive the low-cost, off-peak rate (40-50 percent lower than regular rate).
- **SECOND** - for members using a backup fuel source (dual fuel), it provides options - members can choose which fuel source to utilize depending on fossil fuel prices.
- **THIRD** - Participants are eligible for energy efficiency rebates from Beltrami Electric for choosing electric heating programs. Some technologies (such as heat pumps, mini-splits, storage heat, EV charging and water heating) qualify for hundreds of dollars in rebates.
- **FOURTH** - Beltrami Electric's energy experts provide free home heating comparisons for new construction (HeatSmart), free home energy assessments for existing homes and an electric heat repair program (which covers \$100 in parts annually), all of which provide you with support and service to keep your lights on, your coffee hot and your batteries charged.

The easiest way to get started is to call Beltrami Electric at 218-444-2540 or stop into our office and talk to one of our energy experts. So, the next time you hear the term "Off-Peak" - remember it's good for participating members, it's good for the co-op and it's good for the grid.

That's the power of Off-Peak.

ELECTRICITY:

MADE, DELIVERED, CONSUMED — INSTANTANEOUSLY

Electricity is essential to our everyday lives. It powers our gadgets, keeps our food cold, illuminates our homes, and fuels our modern lives. But have you ever stopped to wonder just how fast electricity really is? It's literally lightning quick!

Electricity is the only product in the world that is made, delivered and consumed at the same moment in time.

It's all thanks to a network of wires and cables that conduct electricity with remarkable efficiency. Whether it's generated by coal, wind, solar, nuclear or any other resource, electricity makes its journey from power plants to our homes and businesses at near the speed of light. That's 186,000 miles per second!

Because of the instantaneous nature of electricity, it must be used the moment it is generated and very little can be stored with current technologies.

That means society requires a continuous flow of electricity being generated to meet the continuous demand from member-consumers like you. Baseload generation resources, like coal, natural gas and nuclear, are critically important because they have the ability to operate 24 hours per day and are not dependent on the weather to generate electricity.

Having reliable sources of power is increasingly important as the world becomes more data driven.

Large data centers are needed to keep up with the endless expansion of the internet. Many more will be required if artificial intelligence (AI) becomes a central part of our lives, as some are predicting.

No matter what the future holds, we know electricity will be a crucial part of our world. So, the next time you flip on a light switch or charge your phone, take a moment to marvel at what's happening on the other side of your power outlet.

HOW TO REPORT AN OUTAGE

1

CHECK YOUR BREAKERS

Check your electrical panel for a tripped breaker or blown fuse as a result of a power overload.

Reset your breaker, replace your fuse, or proceed to step 2 or 3.

2

CONTACT BEC

Call us 24/7
218-444-2540 or 1-800-955-6083
(See NOTE below)

REPORT THROUGH THE SMARTHUB APP

3

Easily report your outage through the SmartHub app. Include a comment about your outage or add your contact phone number, then hit submit.

Click on the Outage Map icon to view current outages.

NOTE: It's important to keep your contact information up to date! BEC's automated outage management system works with caller I.D., and will automatically recognize the location you are calling from if we have your current phone number in our system.

If we do not have your current contact phone number, you will need to have your account or location number available.

You can update your contact info at BeltramiElectric.com/update-my-information.

**VIEW OUR OUTAGE MAP AT
[BELTRAMIELECTRIC.COM](https://BeltramiElectric.com)**

Classifieds

Classified ads rules

- Ads are due by the following dates:
 - o **JULY ISSUE:** Submit by July 1
 - o **AUGUST ISSUE:** Submit between July 1-15
- Ads may be submitted via our website at www.beltramelectric.com. (preferred)
- NO real estate, rental, personal or commercial ads will be accepted.
- All ads must be 50 words or less and typed or printed clearly.
- Editor reserves the right to edit or reject any ad.
- Members may only submit one for sale and one wanted or free ad per issue.
- Ads are published at no charge as space permits on a first-received, first-printed basis, with **no guarantee your ad will appear**.
- Ads are only allowed to be repeated for **three consecutive months** and must be resubmitted each month.
- Include name and Beltrami Electric account number on all submissions.

For Sale:

16' Lund fishing boat, 15 hp Yamaha 4 stroke, long shaft, tiller handle, w/o electric start, excellent condition, Eagle depth finder, anchor, oars, Shoreland'r roller trailer, 2 removable swivel seats, canvas cover, spare tire, current license, \$3,850. 218-556-8623.

2001 Gold Wing \$3,000/obo, solid bike, high miles. Nikon D7000 w/24-85 macro lens, Busch's' field guide and DVD. Canoe: 15' Wenonah square stern with 2 hp Honda. \$800. 218-556-4662.

1988 and 1989 Ford Explorer, 4x4, 1985 Oldsmobile Bravada, AWD; Lincoln Arc Welder, PU mounted, low hours, call for details, 218-679-2156 or 218-308-3931.

Nice wood entertainment center with an opening for a 32" television, 5' W x 6' H, has a glass side cabinet and with 4 enclosed areas below. \$100.

Outdoor picnic table with wood top/metal frame. \$25. 218-308-0949.

Brand new 26" x 84" interior sliding barn door, solid wood with installation hardware kit: \$150. Kamik Canadian winter boots, women size 9, worn once: \$75. 4-drawer metal file cabinet, \$50. 218-759-9534.

1997 Ford 10-passenger van with Triton V10 engine. Only 127,000 miles and runs great. Needs a new muffler, \$2,500. Honda 12 hp gas engine, runs great, was mounted on a JD400 Garden Tractor which died. 847-404-6318.

Grader blade for 3-point hitch, \$400. 1991 MN Twins world Series Champ 16" x 9" plaque, \$200. 1991 MN Twins World Series poster, \$15. Contact Lisa 218-835-7484.

John Deere 160 riding lawnmower; runs good. \$300. 218-224-3466.

CertainTeed Landmark shingles. 2 1/2 squares (8 bundles). Color: Burnt Sienna. \$190. 612-720-6330.

2017 Lincoln MKC, 63,980 miles, fully loaded. Excellent condition, \$19,900. 1995 F-150 pickup with western snowplow. Rusty, but runs and drives good. 121,000 miles. \$3,000. 218-854-7339.

Cabela's Case Tumbler Kit, model 400, never been used \$45. (2) office chairs, nice, \$35 each. Never used - new Conair Illumina 2-sided makeup mirror, orig. \$70 will sell \$25. Lincoln Logs Wild West Frontier, pieces missing, org. 100 pcs. \$8. 218-368-1931.

2016 Chevy Suburban LTZ Premier, 141,000 miles, new battery, well taken care of, tires are good, no accidents, runs great. \$24,000/obo. 218-556-2371.

Self-propelled Toro lawn mower, \$150. Chest freezer, 5-cu. ft., \$50. 218-766-0437.

Large rabbit hutch w/accessories and 3 cages, \$65. Antique oak roll-top desk, \$575. Large antique barn cupolas, \$200 ea. 218-766-7461.

1997 Tuffy Osprey 1760 w/trailer. 100 hp Mariner 2 stroke, Minn Kota Terrova w/foot pad and remote. Hummingbird Helix 7 Chirp, GPS, Gen 2, \$9,000, 218-760-3956.

ProLift lawnmower lift. 300-lb capacity; 20" height. New. \$225. Mini pony cart with bench seat. \$250. 218-759-7730.

TaylorMade R9 Driver and 3 Wood with extra shaft \$275. Sun Mountain push cart, \$65. Electric push cart, \$225. Weber BBQ grill \$120. Sheetrock knife \$5, texturing sprayer \$20. Handheld mortar board \$20. 218-308-1227.

Tomato cages: wire, \$1, wood, \$4. 18-piece solar light set, \$15. 2-in. galvanized pipe: 2-pc, 14-ft, 10-in each, 2-pc 12-ft, 10-in each, \$6/ft. Carrier for small to medium pets, \$25. 5-pc Mulberry wood for small projects, 8-10 inches in the round (make an offer). 218-586-2884.

Beautiful, local, organic flowers. Join our Bouquet CSA. Receive a weekly delivery for one monthly price of \$120. (Must be in Bemidji area). June through September. DIYers call with questions. Call or text for more information. 218-556-0586.

Aluminum prop, brand new, never used. Mercury Spitfire M8026600 12-inch 19 pitch \$165. Wenzel dome tent great shape 10-ft x 12-ft, sleeps four, reinforced polyethylene floor, full fly and screen door, pics available, \$50. Call or text 218-760-7111.

Aluminum boat lift. Good condition. Ready to put in the water. \$500/obo. Call 218-556-7138.

97 Fleetwood 24' fifth wheel camper. Sleeps 6, 1 slide out. Awning and air conditioning. \$5,000/obo. 218-444-6244.

ShoreStation 3,000-lb cantilever aluminum boat lift. Manual winch operation. 18-ft long canopy in excellent condition. (4) raisable, adjustable wheels. 87" wide between uprights. \$1,195 or best reasonable offer. 651-302-0318.

Ashley, leather hide-a-bed sofa and love seat, ox blood color, \$400/set obo. Futon - bunk bed, \$200/obo. Antique (over 100 years old) desk, leather top, \$150/obo. (2) - 40' used aluminum seamless gutters, white, some downspout, good condition, \$100. New Kolbe and Kolbe double casement window, aluminum clad, beige, 5' x 5', \$200. (6) - water filters for Whirlpool refrigerator 4396847/4396710, new in the box, \$5 each. 218-766-8813.

New sail for 12-ft sailboat. \$300. Chrome pontoon tow bar for pulling tubes, water skiers, etc. 218-760-3298.

Oak 3-drawer dresser, 44" L x 19 1/2" D. Sewing machines, \$15 ea. 4-5-6 Block, Crazy, Star quilts, all sizes. (2) oak rockers, restored, \$75. 218-243-2702.

Older dehumidifier, works well. \$20. (4) red outdoor chair cushions, great shape. 218-766-8781.

1978 Rockwood camper. Runs. Overestimated my ability to remodel. Such potential! \$1,000/obo. Will consider reasonable barter. 218-766-2120.

Snowplow for ATV 4-wheeler \$200. Please call 218-206-5391.

1999 Ranger Cherokee w/75 hp Mercury, 2 Lowrance depth finders, with map/GPS, bow-mount trolling motor and extras. Everything works. \$6,500/obo. 14-ft HD. John boat and trailer, 20 hp Johnson motor, swivel seats, \$1,800/obo. Call Vince at 218-255-4101.

New 2023 Salem Forest River camper. Separate bed and bath. 23-ft. \$18,000. Call 218-760-3180.

2003 Mercury 25 hp 4-stroke bigfoot boat motor. Runs great, current service info available. \$3,200. 218-243-3029 leave message.

Wanted:

In search of: fuel barrel, preferably with a stand. Trapping supplies and accessories. Woven or welded fencing preferably 5+ feet tall. Chicken coop. Small disc. 218-407-2500.

Pint canning jars, reasonable prices, please call or text 218-766-8244.

Retired teacher, will take care of your pet while you are gone. Call 218-766-6510.

Older binoculars, telescopes, accessories, and parts. Not China-made stuff. For my use. Bemidji. Text 218-391-8204.

Need a handyman for small projects. Give me a call. 218-766-3544.

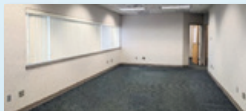
WTB: Rockwell 16-volt drill, batteries, charger. Milwaukee M12, tools, batteries. Ryobi 18-volt brad nailer or finishing stapler. Call or text 218-368-2369.

I'm looking for either a C-Tine drag or a Harrow drag. Something I can pull with an ATV. Call or text Matt at 218-368-0737.

Vendors wanted for 3rd annual Carnival Bazaar at Solway Lutheran Church on Sat. Aug. 17, 2024, from 11 a.m. to 3 p.m. \$20 per space, tables not provided. To register contact Cindy Hayes at 218-760-5967. Register by June 18 to be included in our advertising.

PROFESSIONAL OFFICE SPACE AVAILABLE FOR LEASE

Suite# 203: 923-square-foot Class A office suite, includes three separate offices and a large workspace. Located in a second-floor location, elevator, with an adjacent conference/meeting room. Located in a safe, clean, quiet, low-traffic area of a well-maintained professional building. Will modify these spaces to suit. For further details on these two spaces, contact Mike Birkeland, Beltrami Electric Cooperative, **218-444-2540**.



Beltrami Electric's headquarters

BOARD MEETING HIGHLIGHTS

Beltrami Electric's board conducted its regular monthly meeting Tuesday, April 30, 2024. A quorum of directors was in attendance.

The following reports were given at the meeting:

- President and CEO Echtermach and the board discussed recent safety successes and observations and viewed a safety video.
- President and CEO Echtermach gave his monthly report including March financials, state legislative issues, interconnected systems, microgrids, grants, economic development and Beltrami Electric Solar.
- Arlene Hogquist presented the March financial reports.
- Arlene Hogquist presented the

cooperative's Balanced Performance Scorecard.

- Jolene Kallroos presented the New Service/Service Improvement Member Satisfaction report.
- Directors and the President and CEO shared highlights of meetings attended on behalf of the cooperative and discussed upcoming meetings, events and education conferences.

The following actions were taken at the meeting:

- Approved the consent agenda.
- Appointed John Lund as CoBank's voting delegate.

- Appointed John Lund as National Rural Utilities Cooperative Finance Corporation's voting delegate.
- Appointed John Lund as Federated's voting delegate with Jared Echtermach as the alternate.
- Appointed John Lund as National Cooperative Services Corporation's voting delegate with Jared Echtermach as the alternate.
- Approved director and President and CEO expenses.

The next board meeting will be held on Wednesday, June 26, 2024.

JOIN US FOR AN "AG DAY BREAKFAST"

Beltrami County Farm Bureau "Ag Day Breakfast" will be held at the Beltrami County Fairgrounds on **Sunday, June 30, 2024, from 9 a.m. to 1 p.m.** Join us for an Ag Day Breakfast serving pancakes, sausage, juice, coffee or milk with a free will donation. There will be family fun, silent auction, farm animals, children's activities, live music and wagon rides! See farm equipment up close and learn about agriculture and the crops grown in Minnesota.



2024 ENERGY RESOURCES TOUR

Tuesday, July 23 - Thursday, July 25, 2024

Beltrami Electric Cooperative plans to host an Energy Resources Tour for members July 23-25. The tour will include Minnkota Power Cooperative's headquarters in Grand Forks, the Milton R. Young generation station in Center, N.D., the open-pit lignite mines (weather permitting), Oliver III Wind Energy, the Garrison Dam, and the Lewis & Clark Interpretive Center/Fort Mandan. Guests will travel on a charter bus from Bemidji Bus Line and enjoy a two-night stay at the Baymont Inn & Suites in Mandan, N.D.

We encourage BEC members who have not been on this trip in the past to consider attending this fun and educational experience.

- The cost to members for the three-day trip is \$125 per person or \$200 per double occupancy.
- The tour is limited to ages 12 and older. Children 12 & older attend free with a parent/guardian.

This engaging, in-depth energy tour will help you gain a better understanding of the process involved in generating the electricity that serves you. Space is limited and this trip fills fast, so sign up today!

To reserve your spot, complete the registration form and send it in with your payment, or stop into our office. If it becomes necessary for you to cancel, you are required to notify BEC at least two business days before departure to be eligible for a refund. Registration for the trip is on a first-come, first-served basis with a limited number of openings.

** Priority will be given to members who have never taken the trip. Members who have previously taken this trip will be put on a space availability standby list.*

ENERGY RESOURCES TOUR REGISTRATION

July 23-25, 2024

Please print names of participants the way you would like them to appear on your name tags. We will send confirmation upon receipt of this form. Further details and itinerary will be sent two weeks prior to departure. Mail this form with check to:

Beltrami Electric Cooperative, Attn: Energy Resources Tour, P.O. Box 488, Bemidji, MN 56619

Name of participant(s): *(note age if under 18)*

Mailing Address: _____

Email: _____ Telephone Number: _____

BEC Account #: _____ Dietary Needs *(Ex. gluten free)*: _____



Turn achieves Certificate of Completion of Apprenticeship



Congratulations to Tanner Turn on completing his four years of apprenticeship training and becoming BEC's newest journey lineworker! Tanner received his certificate from the Minnesota Department of Labor and Industry, signifying his completion of the apprenticeship program, which included practical training and prescribed coursework on topics ranging from overhead and underground linework, metering, safety, transformers and more to qualify as a journey lineworker. Tanner started at BEC as a seasonal apprentice lineworker in May 2021. He accepted a full-time position with BEC in May 2022.

Photo caption: President and CEO Jared Echternach presents Tanner Turn with his Certificate of Completion of Apprenticeship from the State of Minnesota.

NORTHERN

L I G H T S

JUNE 2024 | VOL. 71 | NO. 6

Northern Lights (USPS 016488)

Published monthly by Beltrami Electric Cooperative Inc., 4111 Technology Drive NW, Bemidji, Minnesota 56601-5128. Subscription rate is \$5. Periodicals postage paid at Bemidji, MN 56601.

POSTMASTER: Send address corrections to Beltrami Electric Cooperative Inc., P.O. Box 488, Bemidji, Minnesota 56619-0488.

OFFICERS AND DIRECTORS

ChairJohn Lund, *DISTRICT 7*

Vice ChairSue Kringsen, *DISTRICT 8*

SecretaryMurl Nord, *DISTRICT 1*

TreasurerSharon Lembke, *DISTRICT 9*

Directors: Charlie Perkins, *DISTRICT 2*; Vacant, *DISTRICT 3*; Craig Gaasvig, *DISTRICT 4*; Robert Wallner, *DISTRICT 5*; Rick Coe, *DISTRICT 6*

President and CEOJared Echternach

EditorAngela Lyseng

Office Hours: 8:00 a.m. – 4:30 p.m.
Monday – Friday

Telephone: 218-444-2540 or
1-800-955-6083

Website: www.beltramielectric.com

Email: info@beltramielectric.com

MN STATE ELECTRICAL INSPECTORS

Any time you or an electrician does wiring or other electrical work at your home or farm, Minnesota state law requires a state wiring inspector to conduct a proper inspection of the work. A rough-in inspection must be made before any wiring is covered. A final inspection is also required. Please visit www.dli.mn.org for more information. Inspectors can be reached weekday mornings between 7 a.m. and 8:30 a.m.

BELTRAMI COUNTY:

Wade Koons | 218-580-8589
wade.koons@state.mn.us

CASS & HUBBARD COUNTIES:

Tony Kohrs | 218-616-1554
kohrsinspection@paulbunyan.net

GOPHER STATE ONE CALL

1-800-252-1166 or 811

www.gopherstateonecall.org



Anyone who plans to dig is required by law to notify the state of their intentions at least 48 hours in advance. All digging requires the 48-hour notification so that buried telephone line, television cable, pipelines, utility electric lines, municipal water and sewer lines can be located to ensure that none will be severed or damaged.

OUR MISSION STATEMENT

To provide excellent value to our members through the safe delivery of reliable electric service, excellent member service and innovative energy solutions at fair and reasonable prices.

This institution is an equal opportunity provider and employer.



Beltrami Electric Cooperative Inc.

® Your Touchstone Energy® Cooperative

*Connecting Communities.
Powering Life.*

ASK THE EXPERT!



I AM BUILDING A NEW HOME; WHAT DO I NEED TO DO TO GET ELECTRIC SERVICE?



Heather Winskowski
Member Service Representative

Start the process of getting electric service today! Our friendly member services team is ready to help you. Here's what you need to do:

1. Fill out a residential service construction application.
2. If you're new to BEC, also complete a membership form.
3. Provide us with a copy of your warranty deed/land use permit and the 911 address.
4. We'll create an easement/service line agreement for construction of your electric service on your property. You'll need to sign it, and we offer free notary services for this step.
5. We'll schedule a staking appointment for you to meet with our technician to determine your line placement and get a cost estimate for the service construction.

Once all steps are completed and the required fees are paid in full, a crew will be scheduled to construct the new service.

Ask us about our FREE HeatSmart service! If you bring in your detailed building plans/blueprints, our energy experts will analyze factors such as square footage, insulation, windows/doors and climate to provide tailored recommendations so you can make an informed decision that prioritizes comfort and will save you money on heating expenses for your new home.

Ready to get started? You can visit our website, give us a call or drop by our office. We're here to help you!

Website: www.beltramielectric.com/electric-service-construction

Call: 218-444-2540 | 1-800-955-6083

Visit: 4111 Technology Drive, NW, Bemidji, Minnesota. (Mon-Fri, 8 a.m. – 4:30 p.m.)