

NORTHERN

L I G H T S July 2024

FIGURING IT OUT

ABELLO ACOUSTICS BAND



JOIN US FOR BELTRAMI ELECTRIC'S 84TH ANNUAL MEETING – WEDNESDAY, AUG. 7, 2024

BELTRAMI'S NIGHT AT THE FAIR EVENTS:

- Annual meeting (5 p.m.) at the Marilyn Shutter Stage
 - Register by 6:30 p.m. to receive BEC Food Bucks to spend at food vendors that night
- Bucket rides for kids
- Duck pond for kids
- George of the Juggle
- Meet Touchstone Energy® mascot LED Lucy
- Watch a LIVE high-voltage electrical safety demo by BEC's lineworkers
- **FREE PARKING** plus shuttles to the stage
- **FREE CONCERT** in the grandstand at 6:30 p.m. featuring Figuring it Out – the Abello Acoustics Band

GEORGE OF THE JUGGLE; MAGIC & JUGGLING WITH A TWIST!

Catch George of the Juggle at Heritage Square for two lively shows on Wednesday night only – 4:15 p.m. and 5:30 p.m.!



Meet Greg Kaler, also known as George of the Juggle, hailing from St. Cloud, Minnesota-ta! His grandpa gave him the name George, for reasons still a mystery! Every trick and twirl he performs is a tribute to his amazing Grandpa Kaler, who shaped his love for entertainment.

George of the Juggle's comedy magic and juggling is fun for the entire family. His show is filled with entertaining magic using both everyday objects and classic illusions. You'll see magic with coins, cards and an illusion from the classic Walt Disney movie "Bambi." Plus, people howl at his "Hypnotic Wheel" optical illusion – you have to see this one to believe it! You'll also see juggling and circus arts types of demonstrations which the kids love, such as Jugglestix, the Diabolo, Plate Spinning, Boomerang Throwing and "Juggling with the Audience." George of the Juggle's show is interactive – every volunteer is a star! His goal is to make his audiences smile, laugh and have fun. So, get ready for good, clean, family fun with George of the Juggle!





Please join us at your 2024 Beltrami Electric annual meeting

by Jared Echternach, president and CEO

Recently, a Beltrami Electric Cooperative member shared with me how much she appreciates attending our annual meeting at the Beltrami County Fair. She said it's more than a meeting. It's time to catch up with friends, visit the displays and eat some fair food! Conversations like this are one of the many reasons I look forward to BEC's annual meeting. Several years ago, your board of directors decided to move the date and location of the annual meeting to coincide with the Beltrami County Fair. The intent was to increase member engagement, especially with our newer members. Since that decision, we've seen more families, increased attendance and stronger engagement with those who attend. You, the members we serve, always bring value to the meeting, and I know our co-op team is energized by these interactions.

If you've never attended the annual meeting, I'd encourage you to participate. At the annual meeting, we report on current initiatives and discuss the financial health and priorities for the coming years. Equally important, this is an opportunity for us to hear from you.

You have the power

This is also a time to vote for new directors who will represent you and our communities' interests in the co-op. As a member of Beltrami Electric Cooperative, you have the power to help shape our energy future.

Electric co-ops are democratically controlled by the members we serve, which means you have a say

in who governs our co-op. By voting in the annual director election, you can weigh in on the leaders who will make important decisions about the future of the cooperative and our local energy needs.

BEC's board directors are community-minded individuals with different skill sets. We rely on them to help us shape long-term priorities and investments. BEC has nine directors who live in the co-op's service area. We consider them the eyes and ears of the community because they provide their unique perspective on various local issues.

District meetings are held each June, and up to two candidates from each district up for election are placed on the ballot for all members to vote. We want to make voting as convenient as possible for our members, so we offer a variety of ways for you to participate. Members can vote electronically, by mail or in person at the annual meeting.

If you've never been to an annual meeting or it's been a while, we hope you'll stop by. We will once again partner with the Beltrami County Fair and host Beltrami Electric Cooperative Night at the Fair on Wednesday, Aug. 7. Members who register for the meeting will receive "food bucks" to spend at the food vendors that night. We'll have bucket rides for kids, a safety demonstration and a free concert in the Grandstand featuring Figuring It Out, the Abello family singers, from Bemidji.

We hope to see you there.



OFFICIAL NOTICE OF ANNUAL MEETING

The 84th annual meeting of the members of Beltrami Electric Cooperative, Inc. will be held at the Marilyn Shutter Stage on the Beltrami County Fairgrounds on **Wednesday, Aug. 7, 2024, at 5 p.m.**, for the following purposes:

1. To share reports covering the previous fiscal year;
2. To elect three (3) directors of the cooperative in accordance with the Bylaws, one each in Districts 3, 7, and 9, each for a three-year term;
3. To transact such other business as may come before the meeting.

Murl Nord, Secretary
Beltrami Electric Cooperative, Inc.
Board of Directors
July 1, 2024

NOTE: *In order for a member corporation, etc., to participate in business matters, a form must be received by the secretary of Beltrami Electric Cooperative on or before the date of the members' meeting(s). To receive a copy of this form, please contact the cooperative at **218-444-2540**.*

EMPLOYEE UPDATES



Beltrami Electric Cooperative is pleased to announce the addition of two seasonal apprentice lineworkers to our operations department.

Landon Gross, son of Kurt and Karolyn Gross of Blackduck, recently joined BEC in the operations department as a seasonal apprentice lineworker. Landon is a graduate of Blackduck High School and Minnesota State Community and Technical College in Wadena, Minn., where he completed the electrical lineworker program. Landon enjoys fishing, hunting and racing cars.



Shawn O'Brien, son of Monica Roeder and Kelly O'Brien of Blackduck, recently joined BEC in the operations department as a seasonal apprentice lineworker. Shawn is a graduate of Blackduck High School and the Minnesota State Community and Technical College in Wadena, Minn., where he completed the electrical lineworker program. He previously worked for Legacy Power Line. Shawn enjoys hunting and fishing.

GROW ENERGY SAVINGS:
Raise the thermostat a few degrees.



\$1 ELECTRICITY VALUE MENU



COFFEE
MAKER
9 HOURS
OF USE



DISHWASHER
23 HOURS
OF USE



TABLET
600 HOURS
OF USE



LED LIGHT
BULB
900 HOURS
OF USE



ELECTRIC
DRILL
600 HOURS
OF USE



SMARTPHONE
1,700 HOURS
OF CHARGING



TOASTER
8 HOURS
OF USE



LED TV
96 HOURS
OF USE

FINDING THE VALUE IN THE THINGS YOU USE
EVERY DAY – **THAT'S THE VALUE OF ELECTRICITY.**



Unclaimed capital credits list

These former members may contact Beltrami Electric Cooperative by calling the office at 218-444-2540 or 1-800-955-6083 or via email at info@beltramelectric.com.

ADAMS ESTATE, GUY E.; PLYMOUTH, MINN.
ADKINS, GREGORY J. AND REBECCA; CASS LAKE, MINN.
ALLEN, RICHARD C.; BAUDETTE, MINN.
ALLEN, PHILOMENE; RED LAKE, MINN.
ANDERSON, JEANETTE M.; INVER GROVE HEIGHT, MINN.
ANDERSON, ROBERTA J.; *BEMIDJI, MINN.*
ANDERSON, OLIN M. AND CHRISTINE A.; *BECIDA, MINN.*
ANDERSON ESTATE, PATSY; *BEMIDJI, MINN.*
ANNETTE, MONICAL.; *BEMIDJI, MINN.*
APPLIED CONCEPTS COMPUTING; *BEMIDJI, MINN.*
AUGINASH, KIMBERLY J.; *REDBY, MINN.*
AULTMAN, TRAVIS M.; GRAND RAPIDS, MINN.
AUSTAD ESTATE, CHRISTOPHER C.; RUSHFORD, MINN.
BACKMAN ESTATE, VANETTA R.; WALKER, MINN.
BAHR, LORI; PINEWOOD, MINN.
BANASZEK ESTATE, JEAN; BAGLEY, MINN.
BAROTT, JAMES A. AND LAURA J.; ELY, MINN.
BARRETT, FRANK; RED LAKE, MINN.
BASTIAN, RADENE; PUPOSKY, MINN.
BEAULIEU ESTATE, BRENDA E.; CASS LAKE, MINN.
BEAUMONT, BERT AND ARLENE; BRAINERD, MINN.
BECKER, DAVID L.; *BEMIDJI, MINN.*
BECKSTRAND ESTATE, ROGER W.; BAGLEY, MINN.
BELT ESTATE, VERA; MORTON, MINN.
BEMIDJI BUILDING CENTER; *BEMIDJI, MINN.*
BENSON ESTATE, JOSEPH; GLENWOOD, MINN.
BERG, CHERYL A.; *BEMIDJI, MINN.*
BEVER, KENT A.; ALEXANDRIA, MINN.
BLASHLID, RENEE A.; WALKER, MINN.
BODIN, TODD A.; DEER RIVER, MINN.
BOHN ESTATE, RANDY; RED LAKE, MINN.
BOMBARDIR, BRAD AND HEATHER; WOODBURY, MINN.
BONNETTE, TERESA Y.; CASS LAKE, MINN.
BOOMGAARDEN, LARRY W. AND KATHY E.; GRAND RAPIDS, MINN.
BORGSTROM ESTATE, RICHARD; TOWER, MINN.
BOSANKO, JENNIFER L.; BLACKDUCK, MINN.
BRECKE ESTATE, DEAN; SPICER, MINN.
BROTHERN, BETTY; *BEMIDJI, MINN.*
BROWN, CHARLES L.; PRIOR LAKE, MINN.
BROWN, MICHAEL L.; AKELEY, MINN.
BROWN, JANICE M.; *BEMIDJI, MINN.*
BRUCE ESTATE, BONITA; WALKER, MINN.
BRUNS VIDEO; RED LAKE, MINN.
BUCKBASTAR II LLC; *BEMIDJI, MINN.*
BUBKINGHAM, SCOTT W.; *BEMIDJI, MINN.*
BULLHEAD, TEX; *BEMIDJI, MINN.*
BURGESS, LARRY C.; RAMSEY, MINN.
CALDWELL ESTATE, ETHA; CASS LAKE, MINN.
CALHOON ESTATE, HELEN AND COREY; LAPORTE, MINN.
CARLSON, ELIZABETH; WILLMAR, MINN.
CARLSON, DAMIEN J.; *BEMIDJI, MINN.*
CASEY ESTATE, SAMANTHA E.; WALKER, MINN.
CASS LAKE EPISCOPAL CAMP; MINNEAPOLIS, MINN.
CHENEY, THOMAS H. AND DOROTHY A.; *BEMIDJI, MINN.*
CHIPPEWA BIBLE CHURCH; CASS LAKE, MINN.
CHOUNARD ESTATE, ROY Z. AND BEVERLY J.; TWIN VALLEY, MINN.
CHRISTENSON ESTATE, MAYNARD O.; ST. PAUL, MINN.
CIROCCO ESTATE, CAROL J.; LINDSTROM, MINN.
CLARK ESTATE, CLARK, DAVID A. AND ANN; *BECIDA, MINN.*
CLEVELAND, MICHAEL R. AND CHERIE; WALKER, MINN.
CLOUD, ARTHUR AND WILSON, ROBERTA; PONEMAH, MINN.
COCHRAN FAMILY; BURNSVILLE, MINN.
COIL, SHAWN D. AND JAMES, PAULA S.; CROSS LAKE, MINN.
COLBY, AARON; CASS LAKE, MINN.
COLEMAN ESTATE, KEN J. AND NORMA P.; DETROIT LAKES, MINN.

COLEN, MARY C. AND LESTER A.; HINES, MINN.
CONNOR, JONATHAN; CASS LAKE, MINN.
CORONA ESTATE, JESUS V.; RED LAKE, MINN.
CORRICK ESTATE, LESLIE; WALKER, MINN.
CRAMER, JESSIE M.; CASS LAKE, MINN.
DAHL, EARL D.; ROSEVILLE, MINN.
DANERIDGE INC.; LAPORTE, MINN.
DEMARCO, BLANCA; *BEMIDJI, MINN.*
DEMARIS ESTATE, BERTUS E.; DELANO, MINN.
DINGMAN, LEA ANN; LITCHFIELD, MINN.
DOUBET, MICHAEL R. AND KAMI L.; *BEMIDJI, MINN.*
DOUGLAS, BRYAN L. AND MALISSA L.; BLACKDUCK, MINN.
DOWNEY, DARLENE K. AND JEFF; BLACKDUCK, MINN.
DUTCHER, DOREEN E.; MIZPAH, MINN.
DUY, TERRY L.; *BEMIDJI, MINN.*
ECK, DEBBIE; GONVICK, MINN.
ECKENRODE, REED F. AND RENAE L.; *BEMIDJI, MINN.*
ERICKSON, JAMES CARL; HINES, MINN.
ERICKSON, LEIZA K.; *BEMIDJI, MINN.*
ERICKSON, WILLIAM R.; CASS LAKE, MINN.
EVANS ESTATE, LYLE R. AND BARBARA E.; PINEWOOD, MINN.
FAIRBANKS ESTATE, CHARLES S.; *BEMIDJI, MINN.*
FAWCETT, CHRIS E.; MINNEAPOLIS, MINN.
FEDA, DEBRA L.; *BEMIDJI, MINN.*
FENSKE, PAM J. AND TIM D.; *BEMIDJI, MINN.*
FINCKBONE, LISA M.; *BEMIDJI, MINN.*
FINDLATER, FLORA; *BEMIDJI, MINN.*
FINEDAY, FREIDA M.; THIEF RIVER FALLS, MINN.
FINEDAY ESTATE, SHARON A.; DULUTH, MINN.
FINNEGAN, MICHAEL AND PAULETTE; COOK, MINN.
FISHER ESTATE, HERBERT AND JEANETTE L.; WALKER, MINN.
FREDRICKSON, ROBERT M.; BLACKDUCK, MINN.
FUHRMAN, CHARLES D.; SLEEPY EYE, MINN.
GRAVES ESTATE, RHONDA S.; *BEMIDJI, MINN.*
GRISER, J. ROGER.; *BEMIDJI, MINN.*
GROSH, KATHERINE A.; *BEMIDJI, Minn.*
GUSTAFSON, CONNIE L.; *BEMIDJI, MINN.*
HACKEY, VICKIE A.; *BEMIDJI, MINN.*
HALL, SHEILA M.; *BEMIDJI, MINN.*
HALSNE ESTATE, DALE E. AND KRISTENE V.; TYLER, MINN.
HANSEN ESTATE, HARRY A.; *BEMIDJI, MINN.*
HARDY, LEOTA; CASS LAKE, MINN.
HARRIS, JOHN W.; STILLWATER, MINN.
HARRISON, DON C.; CASS LAKE, MINN.
HASTIG, ANTONETTE C.; *BEMIDJI, MINN.*
HAWK, EDITH M.; *BEMIDJI, MINN.*
HEIKKILA, LOIS S.; SHEVLIN, MINN.
HENDRICKSON, JEFFREY A.; CASS LAKE, MINN.
HENNEN, GREG J.; BLACKDUCK, MINN.
HERRICK, HUGH AND SHARON; DULUTH, MINN.
HOCKEMEYER, MARVIN G.; ST. PAUL, MINN.
HOFLAND, ANN C.; *BEMIDJI, MINN.*
HOLLER, RENE L.; WALKER, MINN.
HOLM, CHARLES J. AND SHELLEY R.; *BEMIDJI, MINN.*
HOLTZ ESTATE, PHYLLIS M.; LITCHFIELD, MINN.
HOOVER, DENNIS R.; WORTHINGTON, MINN.
HOWARD, BRIAN; BLACKDUCK, Minn.
HOWARD, STEPHEN W.; REDBY, MINN.
HUD PROPERTY DISP; *BEMIDJI, MINN.*
HUEWE, BRIAN N.; *BEMIDJI, MINN.*
HURD, RHONDA E.; CASS LAKE, MINN.
HUTSON ESTATE, RONNIE T. AND SHARON; *BEMIDJI, MINN.*
HYLAND, LYNDA K.; *BEMIDJI, MINN.*
ICEMAN, DONALD; PONEMAH, MINN.
ISHAM, FERN M.; CASS LAKE, MINN.
JACKSON ESTATE, RODNEY; *BEMIDJI, MINN.*
JENSEN, VALERIE; *BEMIDJI, MINN.*
JENSEN, DAVID F.; PARK RAPIDS, MINN.
JOA, DAVID E. AND JOELLEN E.; EAGLE BEND, MINN.
JOHNSON, REBECCA L.; *BEMIDJI, MINN.*
JOHNSON, VICKY L.; REDBY, MINN.
JOHNSON, DENNIS A.; MADEIRA, MINN.

JOHNSON, DAVID JAMES; *BEMIDJI, MINN.*
JOHNSON, ROBERT JOSEPH; CASS LAKE, MINN.
JOHNSON, WILLIAM L.; CHASKA, MINN.
JOHNSON, DANIEL C. AND TAMMY M.; *BEMIDJI, MINN.*
JOHNSON ESTATE, MITCHELL L.; BLACKDUCK, MINN.
JOHNSON ESTATE, BILLIE D.; *BEMIDJI, MINN.*
JOHNSON ESTATE, WARREN W. AND BEVERLY M.; CASS LAKE, MINN.
JONES ESTATE, RUSSELL A.; CASS LAKE, MINN.
JORDAN, RANDY L. AND THUNDER, CHARLENE RED; *BEMIDJI, MINN.*
JORDAN ESTATE, GARY LEE AND CONSTANCE I.; *BEMIDJI, MINN.*
JOURDAN, JON K.; NORTHOME, MINN.
JOURDAN, MAUREEN A.; *BEMIDJI, MINN.*
JUNGMAN, EDWARD J.; CASS LAKE, MINN.
KANGAS, MATTHEW; CASS LAKE, MINN.
KEELEY, WILLIAM A. AND DEB K.; *BEMIDJI, MINN.*
KENNELLY, ROCHELLE A.; *BEMIDJI, MINN.*
KERBY ESTATE, JANE Z.; MINNEAPOLIS, MINN.
KIGER, DIXIE LEE; SOLWAY, MINN.
KINGBIRD, WILLIAM R.; REDBY, MINN.
KITZMAN, MARK AND SANDY; FERGUS FALLS, MINN.
KNOPPS, JOSEPH AND MEYERS, KINDRA; *BEMIDJI, MINN.*
KNOX, DUWAYNE; *BEMIDJI, MINN.*
KRAMER ESTATE, EVELYN B.; WILTON, MINN.
KREINER, CHRIS J.; *BEMIDJI, MINN.*
KULZER ROPP ESTATE, CARMEN M.; *BEMIDJI, MINN.*
KUNTZ, DANIEL AND KARIN; MAPLE GROVE, MINN.
LADANY, STEVEN AND CINDY; ST. PAUL, MINN.
LAKE ESTATE, MARY P.; MINNEAPOLIS, MINN.
LAKE REGION PROPERTIES, WATSON, RICK; *BEMIDJI, MINN.*
LANDVIK, BRUCE A.; *BEMIDJI, MINN.*
LANGELETT, CRISTE A.; ST. PAUL, MINN.
LARSEN ESTATE, ROBERT M.; BELLE PLAINE, MINN.
LARSON, DANNY LEE AND TAMMY L.; *BEMIDJI, MINN.*
LARSON, RACHAEL; *BEMIDJI, MINN.*
LASALLE LLC; WALKER, MINN.
LEE ESTATE, JOSEPHINE L.; CASS LAKE, MINN.
LEPLEY, CLARK L.; PINE RIVER, MINN.
LIBERT, ROBERT E. AND DIANN; NEW PRAGUE, MINN.
LILLIE ESTATE, DICK L.; WALKER, MINN.
LINDAHL, STAN E. AND JANELLE E.; *BEMIDJI, MINN.*
LIPPINCOTT, TODD L.; CASS LAKE, MINN.
LITTLE, BUSTER B. AND BONNIE L.; DETROIT LAKES, MINN.
LOCHIRCO, SAMUEL V. AND MYRETTA J.; *BEMIDJI, MINN.*
LOEKEN ESTATE, LYNDA; MORA, MINN.
LOKEN ESTATE, DIANA; WANNASKA, MINN.
LONG, JOHN M. AND REBECCA S.; RED LAKE, MINN.
LORGE, DANIEL J.; *BEMIDJI, MINN.*
LUEKEN, JUDY L.; *BEMIDJI, MINN.*
LUNDEEN, CHARLES E.; WEST ST. PAUL, MINN.
LUSSIER, FRANK; MOOSE LAKE, MINN.
LUTGEN, BONNIE; *BEMIDJI, MINN.*
M O CHRISTENSON INC.; WALKER, MINN.
MAGNUSON ESTATE, VIRGINIA M.; *BEMIDJI, MINN.*
MAISH, GREG S.; BLACKDUCK, MINN.
MARDEN, JOANNE; *BEMIDJI, MINN.*
MARIZ, PATRICIA A.; KERRICK, MINN.
MARJAMAA, PAM; LAPORTE, MINN.
MASON, KATHRYN M.; *BEMIDJI, MINN.*
MASSIE BROWN, TRACY M.; SHAKOPEE, MINN.
MATTHEWS, MATT R.; BLACKDUCK, MINN.
MATTHEWS, GARY C.; *BEMIDJI, MINN.*
MAY, COLLEEN R. AND GERALD; RED LAKE, MINN.
MAYS, MARY; PUPOSKY, MINN.
MCALISTER, JAN; ELK RIVER, MINN.
MCGAHEE ESTATE, WANDA; BLOOMINGTON, MINN.

MCGRATH, SHAUN M. AND LISA; ROSEAU, MINN.
MCKENNETT ESTATE, RODNEY; CASS LAKE, MINN.
MESKILL, GERALDINE E.; *BEMIDJI, MINN.*
MILLER ESTATE, WILLIAM M.; WALKER, MINN.
MISENER STATS SPORTS BAR INC.; MASON LAKEWOOD BAR & GRILL; PEQUOT LAKES, MINN.
MITCHELL ESTATE, VERNON D.; CASS LAKE, MINN.
MOORE ESTATE, SALLY G.; EDINA, MINN.
MOUNTAIN SR., CARSON LEE; DULUTH, MINN.
MUNNELL ESTATE, JOHN; CASS LAKE, MINN.
MURDOCK, MICHAEL D.; COOK, MINN.
MURPHY, DEAN; BAXTER, MINN.
MURRAY, CONNIE; BLACKDUCK, MINN.
NEADEAU ESTATE, ALVIN; REDBY, MINN.
NELSON, DAVID J.; FORT RIPLEY, MINN.
NELSON, ROBERT L.; TENSTRIKE, MINN.
NENSON'S PLUMBING & HEATING; BLACKDUCK, MINN.
NERUD ESTATE, ELAINE M.; WALKER, MINN.
NEVITT, NATASHA J.; RED LAKE, MINN.
NICHOL, TODD; NORTHFIELD, MINN.
NIGHTINGALE, DIANE M.; *BEMIDJI, MINN.*
NORTH COUNTRY EQUIPMENT, LEBEAU, RICHARD; DULUTH, MINN.
NSH NORTH; *BEMIDJI, MINN.*
OBRIEN ESTATE, JOSEPH J.; AITKIN, MINN.
OFTELIEDAVIS, DIANE; *BEMIDJI, MINN.*
OHOTTO ESTATE, LILLIE M.; CAMBRIDGE, MINN.
OLDING ESTATE, JULIE M.; *BEMIDJI, MINN.*
OLSON, BRENDA J.; BIGFORK, MINN.
OLSON, ALAN M.; *BEMIDJI, MINN.*
OLSON, REID E. AND EDWARDS-OLSON, KATHRYN R.; ROSEAU, MINN.
OLSON, HEATHER R.; *BEMIDJI, MINN.*
OLSON, REBECCA L.; SARTELL, MINN.
OLSON, BRUCE O.; BAGLEY, MINN.
OLSON, BRANDON D.; DETROIT LAKES, MINN.
OLSON, REID E.; ROSEAU, MINN.
OLSON ESTATE, HENRY N.; PLYMOUTH, MINN.
OSTLUND, DOUGLAS H. AND MARCELLA; BERTHA, MINN.
OVERBEEK ESTATE, JEANETTE; *BEMIDJI, MINN.*
PARKER ESTATE, EILEEN C.; ST. CLOUD, MINN.
PAULSON, CHRISTOPHER J. AND NEELI R.; *BEMIDJI, MINN.*
PEDERSON, CARMELLA H.; *BEMIDJI, MINN.*
PEDERSON, PATRICIA A.; *BEMIDJI, MINN.*
PEELER ESTATE, JERRY R.; CASS LAKE, MINN.
PEMBERTON ESTATE, JOHN C.; CASS LAKE, MINN.
PETERSEN ESTATE, LEE F.; WACONIA, MINN.
PETERSON, LISA K. AND STEPHEN G.; HINES, MINN.
PETERSON, JAMES R. AND DONNA M.; TRACY, MINN.
PETERSON, HEATHER E.; MOORHEAD, MINN.
PEWICK ESTATE, ALICE; NEVIS, MINN.
PEIFER, SARAH K.; *BEMIDJI, MINN.*
PIERCE, GREGORY A.; ALBORN, MINN.
PIERCE, MATT E.; *BEMIDJI, MINN.*
PIERCE, JAMES G. AND ROMONA J.; MCGREGOR, MINN.
POLTA, THOMAS; SPRING LAKE PARK, MINN.
POTTER, WARREN F. AND VIRGINIA M.; CHISHOLM, MINN.
POWERS, DEBRA A.; LAPORTE, MINN.
PREUETT, DARREN AND FISHER, CINDY; *BEMIDJI, MINN.*
RASTAD ESTATE, LUCILLE; WALKER, MINN.
REED, MITZI N.; FARMINGTON, MINN.
REHDER, JOHN AND DIANE; WARREN, MINN.
RICH, RODNEY; *BEMIDJI, MINN.*
RIDLINGTON, KERN S.; AITKIN, MINN.
ROBERTS ESTATE, WILMA J.; *BECIDA, MINN.*
ROBINSON, ANGELA C. AND JAMES R.; *BEMIDJI, MINN.*
ROMAN ESTATE, WILLIAM L. AND CHERYL R.; BLACKDUCK, MINN.
ROPPE, BRENT R. AND DAWN M.; IRON, MINN.
ROTH ESTATE, MYRTLE C.; BLACKDUCK, MINN.
ROY ESTATE, PAUL A.; RED LAKE, MINN.
RUBIN, KRISTINE L. AND OSHEA, PATRICK; BRAINERD, MINN.
RUIZ, JOHN AND BONNIE M.; ROSEVILLE, MINN.
RYAN, ERIN M.; *BEMIDJI, MINN.*
SAYERS, SHIRLEY; RED LAKE, MINN.
SAYERS ESTATE, BRENDA L.; RED LAKE, MINN.
SCHEIE JR. ESTATE, JOHN H.; MONTROSE, MINN.
SCHMIDT ESTATE, WILLIAM G.; *BEMIDJI, MINN.*
SCHNEIDER ESTATE, LOIS A.; MAPLEWOOD, MINN.

SCHOTT, GREGORY P. AND KATHLEEN A.; ALBERTVILLE, MINN.
SCHWEITZBERGER, A. D. AND PATRICIA; MENAHA, MINN.
SEIDEL ESTATE, LEROY; ST. PAUL, MINN.
SEITZ, DERRICK S. AND ANGELA M.; *BEMIDJI, MINN.*
SELIX, TRACEY L. AND CHRIS L.; SHEVLIN, MINN.
SHERIDAN, DAROLD J.; ISANTI, MINN.
SIEGFRIED, DENNIS D. AND VICKI L.; BUFFALO, MINN.
SKUNES, RON W.; CASS LAKE, MINN.
SLETWICK ESTATE, CLARENCE R.; *BEMIDJI, MINN.*
SLINDE, LINDA K.; MONTROSE, MINN.
SMITH, DANIEL C. AND KATHY M.; *BEMIDJI, MINN.*
SMITH, LISA M.; *BEMIDJI, MINN.*
NELSON, STEVEN L.; *BEMIDJI, MINN.*
SMITH, YOLANDA; *BEMIDJI, MINN.*
SMITH, PAMELA; CASS LAKE, MINN.
SMITH, CLYDE; WALKER, MINN.
SMITH ESTATE, WALTER J. AND ANTOINETTE L.; WOODBURY, MINN.
SMITH ESTATE, ROBERTA J.; PENNINGTON, MINN.
SOLEY ESTATE, CLARENCE; *BEMIDJI, MINN.*
SONNENBERG, LARRY J.; TENSTRIKE, MINN.
STEHLIK, ALICE; WALKER, MINN.
STILLDAY, REBECCA L.; RED LAKE, MINN.
STONE ESTATE, CHERYL M.; *BEMIDJI, MINN.*
STRADTMANN, MICHAEL F.; ST. CLOUD, MINN.
STRIEBEL, WAYNE A. AND JERLENE S.; WALKER, MINN.
STRONG, JEREMY L.; REDBY, MINN.
SULLIVAN ESTATE, SHIRLEY; *BEMIDJI, MINN.*
SWANSON ESTATE, EMMY E.; BABBITT, MINN.
SWANSON ESTATE, ROBERT A.; *BEMIDJI, MINN.*
SWANSON ESTATE, GEORGE M.; EDINA, MINN.
SWIGGUM, MARVIN H.; LAPORTE, MINN.
TERRY, EDWARD J.; ST. PAUL, MINN.
TEW ESTATE, DONALD; SOLWAY, MINN.
THAYER, THOMAS M. AND ANNE M.; *BEMIDJI, MINN.*
THEIS, JOE C.; *BEMIDJI, MINN.*
THIEL, REGGIE L. AND ROXANNE; OTTERTAIL, MINN.
THOMAS, DONALD L.; *BEMIDJI, MINN.*
THOMPSON ESTATE, PEGGY A.; CASS LAKE, MINN.
THOMSON ESTATE, ROBERT P.; *BEMIDJI, MINN.*
THORNE ESTATE, JANET R.; BLOOMINGTON, MINN.
TILL ESTATE, DARYL; CASS LAKE, MINN.
TOMSON, ERRANE; *BEMIDJI, MINN.*
VARNEY, JOELEE; *BEMIDJI, MINN.*
VIKING PIPE SERVICES CO LLC, OLSON, DAVID; *BEMIDJI, MINN.*
WALKER ESTATE, WALKER, DON AND BONNIE; OWATONNA, MINN.
WALKER SAND & GRAVEL, ANDERSON, JAMES A.; BRAINERD, MINN.
WALSH, DAVID H.C.; MOORHEAD, MINN.
WARD, JESSICA M.; MINNEAPOLIS, MINN.
WEBB, WILLIAM A.; *BEMIDJI, MINN.*
WEIR, IVAN LEE; *BEMIDJI, MINN.*
WELLS, BRANDI; RED LAKE, MINN.
WEPSALA, MICHAEL A.; WALKER, MINN.
WHITE, SHANNON R.; CASS LAKE, MINN.
WHITE ESTATE, RAMONA J.; CASS LAKE, MINN.
WIDMAN ESTATE, FLORIAN E.; CLEARWATER, MINN.
WIEST, HENRY L.; PUPOSKY, MINN.
WILKENS, GARY D.; BLACKDUCK, MINN.
WILLERT ESTATE, WILLERT, HOWARD A. AND KATHRYN A.; BLAINE, MINN.
WILLIAMS, RICHARD E.; *BEMIDJI, MINN.*
WILLIAMSON, SAGE M.; *BEMIDJI, MINN.*
WILLIS, JEFFREY R. AND JENNY R.; *BEMIDJI, MINN.*
WILSON, JACK L. AND SUZANNE M.; ROCHESTER, MINN.
WILSON ESTATE, JAMES E.; CASS LAKE, MINN.
WOLD ESTATE, MARION OPAL; THIEF RIVER FALLS, MINN.
WOOSLEY, RAY D. AND MARIE; LAPORTE, MINN.
WOYACH, TANYA R.; AKELEY, MINN.
WRW INC, ECKSTEIN ESTATE, WYAN, RICHARD; RYAN, ERIN M.; *BEMIDJI, MINN.*
YANKOWAK, TOM; MORA, MINN.
YELLOW, TOBIAS; RED LAKE, MINN.
ZACHER, DUSTIN; WALKER, MINN.
ZANIER, IVA M.; *BEMIDJI, MINN.*
ZIESKE, CAROLYNE AND DARRELL; HUGO, MINN.

THE BELTRAMI ELECTRIC COOPERATIVE

GUIDE TO E-BIKES

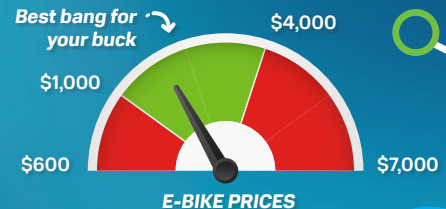


You know you've been curious about battery-powered bikes, more commonly known as e-bikes. And why wouldn't you be? You can go farther, faster – and with way fewer sore muscles the next day. As the technology improves, the costs are coming down, so this summer is the perfect time to find an e-bike of your own.

E-Bike Classifications

CLASS	CONTROL	TOP ASSISTED SPEED
Class 1	Pedal-assist only – electric motor is only activated when the rider pushes the pedals; no throttle control on the handlebar	20 mph
Class 2	Pedal-assist or pedal-free propulsion – electric motor can be activated by pedaling or with a throttle control	20 mph
Class 3	Pedal-assist only – these faster, more powerful bikes have their own set of rules and regulations; may not be legal to ride on bike paths in some towns	28 mph

Cost You can spend **AS LITTLE AS \$600 TO MORE THAN \$4,000** on a new e-bike – most of the top-reviewed ones will be at least \$1,000. However, some specialty models of e-bikes can go for as high as \$6,000 or \$7,000! The Minnesota Department of Revenue has an e-bike rebate of up to \$1,500 on a qualifying e-bike, and the rebate value cannot exceed the price of the e-bike.



Charging

You will want to check out your manufacturer's charging instructions when you get your e-bike, but the following are the general steps of the charging process:

- All e-bikes have a battery pack that can be charged on the bike; in some models, the battery can be removed and charged wherever you have an outlet.
- A battery charger should be included with your

e-bike; make sure you use the included charger to ensure charging compatibility, efficiency and safety.

- You will get your best long-term results if you charge the battery indoors.
- For most models, you should first plug the charging unit into the wall and then attach the bike battery; some may have a cap that you will need to remove.

How long will it take to charge my battery?

The amount of time it takes to charge will depend on several factors, including the battery's capacity and your charger type. On average, it takes around **2 HOURS** to get to a majority charge (0% to 80%) and about **4-5 HOURS** for a complete charge (0% to 100%). Do remember that charging times will vary.

What is the range for a single battery charge?

Again, this will depend on several factors, but usually an e-bike battery will last **30-50 MILES**. It comes down to your battery's capacity, how much pedal-assist you use, how wild your terrain is, the watts the motor is using, and the weight of everything the bike is carrying.

Classifieds

Classified ads rules

- Ads are due by the following dates:
 - o **AUGUST ISSUE:** Submit by July 1.
 - o **SEPTEMBER ISSUE:** Submit between July 2 and Aug. 6.
- Ads may be submitted via our website at www.beltramelectric.com. (preferred)
- NO real estate, rental, personal or commercial ads will be accepted.
- All ads must be 50 words or less and typed or printed clearly.
- Editor reserves the right to edit or reject any ad.
- Members may only submit one for sale and one wanted or free ad per issue.
- Ads are published at no charge as space permits on a first-received, first-printed basis, **with no guarantee your ad will appear.**
- Ads are only allowed to be repeated for **three consecutive months** and must be resubmitted each month.
- Include name and Beltrami Electric account number on all submissions.

For Sale:

14-ft Charger sailboat and trailer \$600. Call 813-786-9026.

Labrador pups looking for good and loving homes! Parents are AKC registered and great hunters. Puppies ready in mid-June. These pups are loved on and handled multiple times a day! \$800. 218-556-0116.

2006 37 Ft. Wildwood LE Travel Trailer. Queen bed, kitchen, microwave, table seats 4, futon couch, bathroom with shower and backroom bunk beds. \$7,500/obo. Call 763-286-4119 or 218-556-0582.

2244 Massey Ferguson crawler. \$2,700. 218-586-2902.

Hoyt X Tec bow. Draw 40-75 lbs, 75% let off 310 fps, quiver, mech. Release, stabilizer, sights, 9 arrows and tips, literature, \$225. Soft-sided padded bow case, \$25. Hard plastic case, \$35. The Block foam target, \$40. 651-492-6709.

Snowblower, electric start, \$80. Old comic books; antique 16" H glass crock with lid; two old canners (flex lid and heavy aluminum); horse cart w/ motorcycle wheels, \$275. 218-243-3112.

2003 Mercury 25 hp 4-stroke bigfoot boat motor.

Runs great, current service info available. \$3,000. 218-243-3029 leave message.

1957 Chevy 2-door sedan. Disassembled, needs restoration. Very little rust. \$7,000. 1973 Ford F100, not running, \$1,400. Titles for both. 218-368-4923.

Claw Foot bathtub, needs refinishing, \$95. Illustrated World War II Encyclopedia 24-volume set, excellent condition, \$75. Pyle wireless BT audio amplifier NIB \$75. Dual indoor/outdoor speakers NIB \$30. Sony ICF-CD543RM multifunction AM/FM/TV/CD undercabinet NIB \$110. Wooden recipe trunk holds 4"x6" cards with dividers. \$25. 218-368-1931.

Wilson ProStaff right hand golf clubs w/bag; Zenith high fidelity AM-FM tabletop radio; Vintage Richmond Cedar Works Sterling 5 qt. electric ice cream freezer; Cuckoo clock, Seth Thomas mantel clock, Emperor school clock, Emperor Model 120 grandfather clock, and antique mantel clock; tan canvas hunting jacket M/L. 218-547-1836.

Beautiful, local, organic flowers. Join our Bouquet CSA. Receive a weekly delivery for one monthly price of \$120. (Must be in Bemidji area). June through September. DIYers call with questions. Call or text for more information. 218-556-0586.

Old Town canoe; 13-ft; \$300. Tabs good until 2025. 507-456-2856.

2020 19.5 Lund Crossover, 150 horse mercury, 15 horse kicker, spot lock trolling motor. \$49,900. 605-430-6145.

DJI Mavic Pro Platinum, low hours, excellent condition, 2 controllers, 4 batteries, Neutral Density filters, Nanuk hard case, Powerextra charger, charges 3 batteries at once and 2 USB ports, \$500. 218-368-1643.

New aluminum propeller, Mercury Spitfire m8026600, 12-inch, 19 pitch, fits 115 horsepower mercury four-stroke. Still in the box never used. \$175. Call or text 218-760-7111.

2004 Chevy Silverado 1500 4x4. Runs good. \$1,600. 218-556-6970.

Women's low profile irons: 3-PW \$30, putter \$20. Golf travel bag, \$20. Men's golf shirts, L, XL, \$5. Like new professional marine binoculars 7x50, waterproof, internal illuminated compass, range finder, integrated distance calculator. For big water like Lake Superior, Lake of the Woods. NEW. Yours for \$200. Free asst magazines. 218-586-2884.

Polaris Ranger Crew premium roof liner - new in box. Designed to fit 2022-2023 Ranger Crew SP 570 models. \$200. 218-556-0805.

Wanted:

Retired teacher - I will love and care for your pets while you are away. 218-766-6510.

Used steel fence posts for horse pasture. Must be relatively straight and in decent shape. Please call or text 218-280-7447 with details (including post height and quantity available) and pricing.

Woodchipper. 218-243-3112.

Free:

High-quality leather sofa, matching chair, and ottoman. Our cat scratched one end of the sofa and the back of the chair. Otherwise in excellent condition. 218-368-1643.

PROFESSIONAL OFFICE SPACE AVAILABLE FOR LEASE

Suite# 203: 923-square-foot Class A office suite, includes three separate offices and a large workspace. Located in a second-floor location, elevator, with an adjacent conference/meeting room. Located in a safe, clean, quiet, low-traffic area of a well-maintained professional building. Will modify these spaces to suit. For further details on these two spaces, contact Mike Birkeland, Beltrami Electric Cooperative, **218-444-2540**.



Beltrami Electric's headquarters

JOIN BELTRAMI ELECTRIC AT THESE SUMMER COMMUNITY EVENTS!

Laporte Days - July 6

Kelliher Days - July 13

Backwoods Bash - August 17



Parades. Bucket rides for kids. Commitment to community.

Our offices will be closed

Thursday, July 4, in observance of Independence Day.

If you experience an outage, call 1-800-955-6083.

SIGNS OF AN

ENERGY SCAM

High-Pressure Tactics

Scammers will pressure you, creating a sense of urgency. Claims that your power will be disconnected without immediate payment are common with utility scams.

Sketchy Payment Methods

Scammers may ask for unusual payment methods like gift cards or cryptocurrency. In these cases, it's likely a scam.

Dodgy Communication

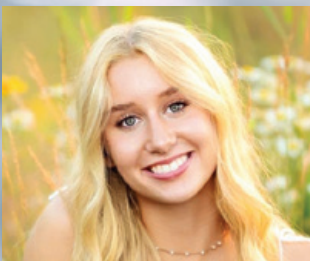
Whether an email, text message or letter, utility scams typically include poor grammar, spelling errors or unusual email addresses. These are common warning signs of a scam.



Congratulations

Class of 2024 Beltrami Electric Cooperative scholarship recipients!

Beltrami Electric Cooperative awards scholarships annually to students attending seven area high schools within BEC's service territory, and one at-large scholarship to a student who attends a school other than the seven listed below. To be eligible, the student's parent(s) or guardian must be a Beltrami Electric member and the student must show proof of enrollment in a post-secondary education institution the following year. Each school selected the winners through committees or guidance centers. Beltrami Electric scholarships are funded with unclaimed capital credits that otherwise would be forfeited to the state.



Hannah Voge
Bemidji High School
(Parents: Brian & Jennifer Voge)



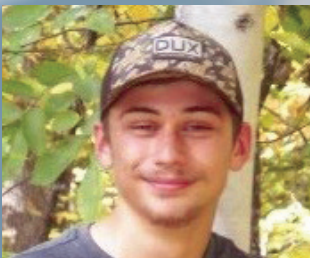
Kenly Anderson
Blackduck High School
(Parents: Tog & Sara Anderson)



Constance White
Cass Lake-Bena High School
(Parent: Margaret Staples)



Maleah Grundmeier
Kelliher High School
(Parents: Glenn & Carey Grundmeier)



Wyatt Lahr
Laporte High School
(Parents: Maria Staples & Richard Lahr)



Anissa Sumner-Stately
Red Lake High School
(Parent: Donna Sumner)



Lexi Johnson
Walker-Hackensack-Akeley High School
(Parent: Joshua Johnson)



Kyla Roesch
At-Large Scholarship
(Parents: James & Brenda Roesch)

Beltrami Electric is pleased to contribute to the further education of students each year. We wish them the best of luck in their studies and careers!

BOARD MEETING HIGHLIGHTS

Beltrami Electric's board conducted its regular monthly meeting Wednesday, May 29, 2024. A quorum of directors was in attendance.

The following reports were given at the meeting:

- President and CEO Echternach and the board discussed recent safety successes and observations.
- President and CEO Echternach made his monthly report, including April financials, district meetings, Beltrami Electric Solar, legislative issues affecting the cooperative, United Way and Cooperative Family Fund garage sale fundraiser and employee updates.
- Arlene Hogquist presented the April financial report.

- Sam Schmitz presented the legal update.
- President and CEO Echternach presented three resolutions on Beltrami Electric Solar.
- Directors and President and CEO Echternach discussed upcoming meetings and education conferences.

The following actions were taken at the meeting:

- Approved the consent agenda.
- Approved three resolutions supporting the solar garden program.

- Approved holding June's board meeting on June 28, 2024.
- Approved holding October's board meeting on Oct. 23, 2024.
- Approved the director and President and CEO expenses.

The next board meeting will be held on Wednesday, July 31, 2024.

NORTHERN

L I G H T S

JULY 2024 | VOL. 71 | NO. 7

Northern Lights (USPS 016488)

Published monthly by Beltrami Electric Cooperative Inc., 4111 Technology Drive NW, Bemidji, Minnesota 56601-5128. Subscription rate is \$5. Periodicals postage paid at Bemidji, MN 56601.

POSTMASTER: Send address corrections to Beltrami Electric Cooperative Inc., P.O. Box 488, Bemidji, Minnesota 56619-0488.

OFFICERS AND DIRECTORS

ChairJohn Lund, *DISTRICT 7*

Vice ChairSue Kringen, *DISTRICT 8*

SecretaryMurl Nord, *DISTRICT 1*

TreasurerSharon Lembke, *DISTRICT 9*

Directors: Charlie Perkins, *DISTRICT 2*; Vacant, *DISTRICT 3*; Craig Gaasvig, *DISTRICT 4*; Robert Wallner, *DISTRICT 5*; Rick Coe, *DISTRICT 6*

President and CEOJared Echternach

Editor.....Angela Lyseng

Office Hours: 8:00 a.m. – 4:30 p.m.
Monday – Friday

Telephone: 218-444-2540 or
1-800-955-6083

Website: www.beltramielectric.com

Email: info@beltramielectric.com

MN STATE ELECTRICAL INSPECTORS

Any time you or an electrician does wiring or other electrical work at your home or farm, Minnesota state law requires a state wiring inspector to conduct a proper inspection of the work. A rough-in inspection must be made before any wiring is covered. A final inspection is also required. Please visit www.dli.mn.org for more information. Inspectors can be reached weekday mornings between 7 a.m. and 8:30 a.m.

BELTRAMI COUNTY:

Wade Koons | 218-580-8589
wade.koons@state.mn.us

CASS & HUBBARD COUNTIES:

Tony Kohrs | 218-616-1554
kohrsinspection@paulbunyan.net

GOPHER STATE ONE CALL

1-800-252-1166 or 811
www.gopherstateonecall.org



Anyone who plans to dig is required by law to notify the state of their intentions at least 48 hours in advance. All digging requires the 48-hour notification so that buried telephone line, television cable, pipelines, utility electric lines, municipal water and sewer lines can be located to ensure that none will be severed or damaged.

OUR MISSION STATEMENT

To provide excellent value to our members through the safe delivery of reliable electric service, excellent member service and innovative energy solutions at fair and reasonable prices.

This institution is an equal opportunity provider and employer.



Beltrami Electric Cooperative Inc.

® Your Touchstone Energy® Cooperative

Connecting Communities.
Powering Life.

Beltrami Electric



Touchstone Energy®

OPEN



Friday, Sept. 13, 2024

Castle Highlands
Golf Course



- 18-hole, 4-person scramble
- 10 a.m. shotgun start
- Prizes awarded to top three teams
- Hole-in-one, closest to the pin, and cornhole contests
- Meal provided for all players

Presenting Sponsors:



Delta Dental of Minnesota

Player Gift Sponsor:



To register a team or for more information, visit beltramielectric.com or call 218-444-2540.

ALL PROCEEDS BENEFIT THE

