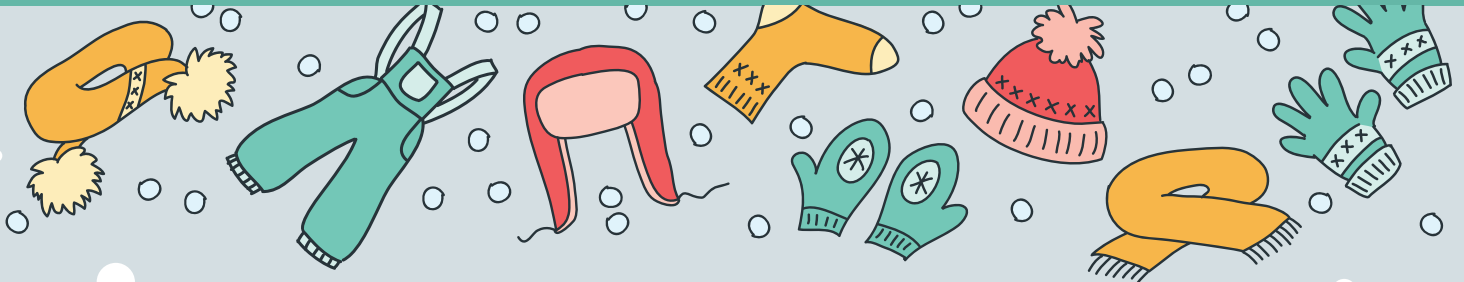


# NORTHERN

L I G H T S February 2025



## Mitten Tree - Thank you!

Beltrami Electric Cooperative (BEC) delivered donated mittens, gloves, hats, scarves and socks to children at area Head Start and Early Child Family Education (EFCE) programs as part of its annual Mitten Tree campaign.

BEC received more than 1,000 donated items, with the majority of those items being hats. With so many hats donated, we delivered to some elementary schools as well.

Commitment to Community is one of our values as a cooperative. No matter how great or small the act, every time we give back, we strengthen our communities.



*Kasey Kampfner and Melissa Schroth delivered items to Laporte Head Start.*



*Matt Roberts and Travis Voelkner dropped off hats to Red Lake Elementary School.*

We would like to thank everyone who contributed to our Mitten Tree this year, whether you dropped off items, shipped them to us, or mailed in a cash donation to purchase items. We had individuals and many local churches and knitting groups donate items, and it was so fun to see the items that were selected or made with love for our area children.



*Kathy Dreher and Angela Lyseng delivered items to Kelliher Head Start.*



**Beltrami Electric  
Cooperative Inc.**

© Your Touchstone Energy® Cooperative



# Reliability, rising costs and financial responsibility: Three reasons for our first rate change in seven years

Changes will be reflected on April billing statements, after the winter heating season  
– by Jared Echternach, president and CEO

Your cooperative faced a financially challenging year in 2024. While our expenses were below budget, we experienced insufficient revenue attributed to lower-than-expected energy sales due to mild weather. In fact, in 2024 our service area experienced the fewest heating degree days in 10 years. While we're proud we haven't had a rate change in seven years, we're certainly not immune to inflation. The average cost of a wood pole has increased 35% since 2018. Underground wire 63%. Transformers 140%. All of these additional costs place tremendous pressure on the cost of your electric service.

Minnkota Power Cooperative is our wholesale power supplier and will increase rates 8% in April. Wholesale power accounts for roughly 70% of our costs, so changes in wholesale rates have a significant impact on our operation. The remaining 30% of our costs are internal. Some of these are controllable, some are not. Your board of directors and employees have done an excellent job of keeping controllable costs within budget.

In December, your board of directors approved a rate increase effective with the April 2025 billing cycles. The monthly access fee for residential/small commercial rate classes will increase \$7.50 per month and the energy rate will remain the same at 12 cents per kilowatt-hour. A demand charge line item was added to residential/small commercial bills last fall at zero dollars. A demand charge of \$1.50 per kilowatt (kW) will be implemented with the April billing cycle on residential/small commercial accounts. There will also be changes to other rate classes, which are summarized on the following pages. Overall, the average rate increase will be approximately 12.7%. This will vary depending on rate class and how you use electricity. Spread over seven years, this averages 1.8% per year, which is below the rate of inflation over the same period.

As a not-for-profit electric cooperative owned by its members, Beltrami Electric's board of directors only increases rates when it must, to remain financially stable and to meet our lenders' financial covenants. Your board of directors and employees take this responsibility seriously, as we too are members. One of the challenges we face as a rural electric

cooperative is low density. We have roughly six members per mile of line compared to investor-owned utilities with 35-50 consumers per mile of line and municipals with 50-75 consumers per mile of line. This is an enormous difference in terms of cost recovery. Simply put, we have fewer members and more miles of line. As a result, we have significantly fewer members from whom we recover our fixed costs.

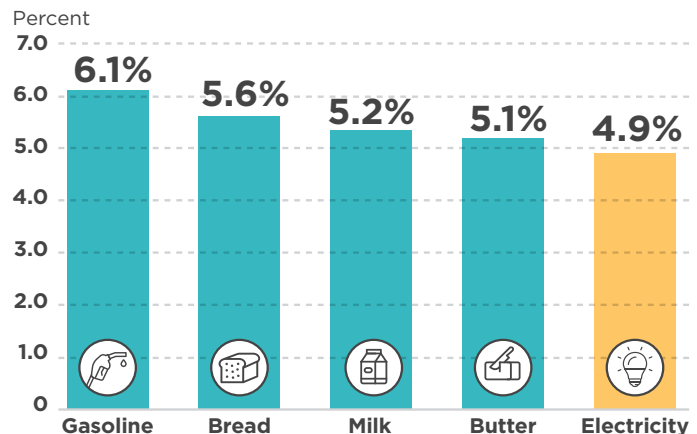
Historically, Beltrami Electric has recovered much of its fixed costs through the energy rate. When we sell fewer kilowatt-hours due to weather, energy efficiency and conservation, it reduces our ability to recover our fixed costs. As a result, your board of directors has elected to increase the monthly access charge, implement a demand charge and keep the residential/small commercial general service energy rate the same. A summary of the rate adjustment can be found on page 3 of this issue, along with a couple of examples of how the changes may impact your monthly bill. We will provide additional details in the next couple of months.

I can assure you as a cooperative we will continue to look for ways to manage costs for our members, striving to provide value without sacrificing safety or reliability.

## ELECTRICITY REMAINS A GOOD VALUE

Although inflation has led to increasing costs in many areas of our lives, the cost of powering your home rises slowly when compared to other common goods. Looking at price increases over the last five years, electricity remains a good value.

Average Annual Price Increase 2018-2023



Source: U.S. Bureau of Labor Statistics  
Consumer Price Index



## 2025 Rate Adjustment Summary:

- ▶ **Residential and small commercial** services will see the monthly Access Charge adjusted from \$42.50 to \$50.00
- ▶ **Residential and small commercial** services will see the addition of a \$1.50/kW Demand Charge
- ▶ **Small commercial** services with a transformer over 25 kVa will see the monthly Access Charge adjusted from \$93.00 to \$100.00
- ▶ **Residential and small commercial** Off-Peak services will see the monthly Access Charge adjusted from \$2.50 to \$5.00
- ▶ The **Off-Peak energy** (kWh) rate will be adjusted to 6.89 cents/kWh in winter and 9.75 cents/kWh in summer
- ▶ **Single-phase large commercial** with demand over 50 kW and three-phase commercial with demand less than 50 kW will see the addition of a \$1.50/kW Demand Charge and removes the energy step rate, adjusting the energy (kWh) rate of 12.2 cents to 12.7 cents per kWh.

\* The rate adjustments noted above will be effective with the April billing cycles.

\* The complete list of rate adjustments can be found at [beltramielectric.com/rates](http://beltramielectric.com/rates).

## Residential Bill Comparison

(non-Off-Peak, excludes tax)

Existing	New
Access Charge: \$42.50	Access Charge: \$50.00
Energy/kWh: 1,000 x \$0.12 = \$120	Energy/kWh: 1,000 x \$0.12 = \$120
	Demand Charge: 4.6 kW x \$1.50 = \$6.90
<b>Total: \$162.50</b>	<b>Total: \$176.90</b>
	<b>Increase: 8.9%</b>

## Residential Bill Comparison

(with Off-Peak (winter rate), excludes tax)

Existing	New
Access Charge: \$42.50	Access Charge: \$50.00
Off-Peak Access Charge: \$2.50	Off-Peak Access Charge: \$5.00
Energy/kWh: 1,000 x \$0.12 = \$120	Energy/kWh: 1,000 x \$0.12 = \$120
Off-Peak kWh: 2,000 x \$0.0672 = \$134.40	Off-Peak kWh: 2,000 x \$0.0689 = \$137.94
	Demand Charge: 4.6 kW x \$1.50 = \$6.90
<b>Total: \$299.40</b>	<b>Total: \$319.84</b>
	<b>Increase: 6.8%</b>

## THE RISING COST OF ELECTRIC UTILITY MATERIALS

Over the past four years, your electric cooperative has experienced an unprecedented increase in the cost of materials we need to deliver power. It's an uptick everyone in the industry is facing, and we have done our best to keep those increases from affecting electric rates. This graphic shows some of the core components that your electric cooperative needs to operate and the corresponding price increases since 2020. We thank our members for your understanding as we work to ensure you receive the best possible value for your energy dollar.



# THE TRUTH ABOUT TANKLESS WATER HEATERS

Do your research before purchasing a tankless water heater



**Bob Gregg, Business Development Manager**

Most homeowners use storage tank water heaters, which keep water hot 24/7. Tankless water heaters, also known as “on-demand” water heaters, heat water as you use it.

A tankless water heater, whether powered by electricity or gas, has gained popularity due to its space-saving design and claim for increased energy efficiency.



Tankless water heaters do not store hot water; they heat the water as you use it. The size of tankless water heaters varies from small point-of-use heaters to whole-house units, and prices for the units range from \$500 to \$1,500. The manufacturers of these units make claims about big savings from energy efficiency and reduced standby loss. Unfortunately, they neglect to tell you the downside of an electric on-demand water heater.

Electric Water Heater Cost Comparison	20-kW tankless water heater on regular rate	4.5-kW storage water heater on regular rate	4.5-kW storage water heater on off-peak rate
Demand (kW) charge	\$30.00	\$6.75	\$0.00
Energy (kWh) charge	\$41.00	\$44.00	\$25.25
<b>Estimated monthly operating cost</b>	<b>\$71.00</b>	<b>\$50.75</b>	<b>\$25.25</b>
Off-peak savings	No	No	Yes
Eligible for rebates	No	No	Yes

\* Electric tankless water heaters could incur a higher monthly access charge.

## PROS AND CONS:

- **Pros:** No standby heat loss, space-saving design.
- **Cons:** Minimal energy savings compared to well-insulated tank heaters, high-energy demand (12 kW to 30 kW), potential need for electrical system upgrades and higher operating costs for electric models.

## EFFICIENCY AND COSTS:

- Tankless heaters can draw as much as 30 kW, compared to 4.5 kW for traditional tank heaters.
- High demand can lead to increased costs for electric cooperatives and their members.
- May require significant electrical upgrades, such as a designated 100-amp circuit breaker, in addition to installation costs and monthly operating costs.

## SUITABILITY:

- Best for small quantities of hot water, such as in cabins.
- May not be cost-effective for typical homes due to high operating costs and potential for running out of hot water during peak water demand.

Choosing between a tank and tankless water heater requires careful consideration, including up-front costs, installation requirements, operating costs and your family’s specific hot water needs.

For personalized advice, contact our energy experts who can help you determine the best option for your home.







# Attention: Class of 2025

At-large scholarship deadline is April 1, 2025.

BEC is offering a \$1,000 at-large scholarship for students whose parent/guardian is a member of Beltrami Electric. The at-large scholarship is available for students who are homeschooled or who attend a charter school or other school not part of BEC's High School Scholarship Program. Find more info at [beltramielectric.com/scholarships](http://beltramielectric.com/scholarships).

## EMPLOYEE YEARS OF SERVICE RECOGNITION



The following employees were recognized for their years of service in 2024 (135 years). Left to right: **William Haman (25 years)**, **Rebecca Zaiser (25 years)**, **Jay Declusin (25 years)**, **Steve Lapos (10 years)**, **Jared Echternach (15 years)**, **Arlene Hogquist (35 years)**.



ATTENTION:  
HIGH SCHOOL JUNIORS...  
WIN A WEEK IN  
WASHINGTON, D.C.!

The  
ELECTRIC COOPERATIVE  
YOUTH TOUR

Monday-Saturday,  
JUNE 16-21, 2025

APPLICATION  
DEADLINE:  
Monday,  
Feb. 3, 2025



Applicant's parent or guardian must be a member of Beltrami Electric Cooperative



For more details or to apply online, scan the QR code:

## BOARD MEETING HIGHLIGHTS

The Beltrami Electric Cooperative board of directors conducted its regular monthly meeting Wednesday, Dec. 18, 2024. A quorum of directors was in attendance.

### The following reports were given at the meeting:

- President and CEO Echternach and the board discussed recent safety successes and observations.
- Minnesota House Representatives Matt Bliss and Bidal Duran gave a legislative update.
- President and CEO Echternach made his monthly report, including 2025 membership to America's Electric Cooperatives PAC and REPAC, financials, budget, employee updates, legal update and union negotiations.
- Arlene Hogquist presented the November financial report and financial forecast.
- President and CEO Echternach presented the 2025 Budget and Work Plan.
- President and CEO Echternach presented the 2025 Marketing and Communications Plan.

- President and CEO Echternach presented proposed revisions to rates.
- Bob Gregg and Ayla Kranz reviewed the Rural Economic Development Loan and Grant Program.
- President and CEO Echternach reviewed the Red Lake Business Activity Fee enacted by the Red Lake Tribal Council.
- President and CEO Echternach presented the Non-Union Compensation and Benefits Plan.
- President and CEO Echternach presented proposed revisions to BEC rates.
- Directors and President and CEO Echternach discussed upcoming meetings and events.

### The following actions were taken:

- Approved the consent agenda.



- Approved support for Rick Coe's reelection as MREA District 1 director.
- Approved the 2025 Budget and Work Plan.
- Approved the 2025 Marketing and Communications Plan.
- Approved the 2025 rate revisions.
- Approved the Rural Economic Development Loan and Grant Program.
- Approved a pass-through of the Red Lake Business Activity Fee enacted by the Red Lake Tribal Council, to affected members.
- Approved the Non-Union Compensation and Benefits Plan.
- Appointed Murl Nord as the NRTC Annual Meeting voting delegate and John Lund as the alternate.
- Approved director and President and CEO expenses.

The next board meeting will be held Friday, Feb. 28, 2025.



# Classifieds

## Classified ads rules

- Ads are due by the following dates:
  - **MARCH ISSUE:** Submit by Feb. 3.
  - **APRIL ISSUE:** Submit between Feb. 4 and March 3.
- Ads may be submitted via our website at [www.beltramelectric.com](http://www.beltramelectric.com). (preferred)
- NO real estate, rental, personal or commercial ads will be accepted.
- All ads must be 50 words or less and typed or printed clearly.
- Editor reserves the right to edit or reject any ad.
- Members may only submit one for sale and one wanted or free ad per issue.
- Ads are published at no charge as space permits on a first-received, first-printed basis, **with no guarantee your ad will appear.**
- Ads are only allowed to be repeated for **three consecutive months** and must be resubmitted each month.
- Include name and Beltrami Electric account number on all submissions.

## For Sale:

Aeolian Vocalion hand-crank record player. Gradolá model with volume control. Working condition, includes about 100 records, both 10 inch and 12 inch some very collectible. The finish is very good, a very unique piece. \$200 for all. 218-759-2556.

4x5 round hay bales and square straw bales, 218-407-3514 anytime.

2009 Ford police interceptor 4.6 V8, 141K, good rubber, asking \$4,000/obo. Will listen to offers. 2001 Dodge Caravan 3.3, runs, moves, 157K, has rust, asking \$2,000. FIRM. 218-444-9422.

Two vintage sewing machines: a "Domestic" brand rotary electric sewing machine in wood cabinet, and a "Montgomery Ward" brand treadle sewing machine in wood cabinet - \$700 each. Good condition. Also, two CNC router machines, great for woodworking projects. Good condition. Comes with lots of extras. \$1,000 for both. Great deal. 218-368-4834.

Beautiful cribbage boards made of handmade hardwoods - \$30. Make wonderful gifts. Call 218-586-2544.

Craftsman 6-drawer rolling tool cabinet, \$50. Duck decoys: 22 Mallard, Wood duck, and Goldeneye with bag, \$75. 2018 F-150 #24 lug nuts - new, \$40. RV wheel chock locks, \$20. 218-508-8421.

1928 Ford Model A Coup, with rumble seat. Call 218-444-9794.

Wheelchair, brand new, purchased for \$1,100. Any reasonable offer. Call 218-243-2985.

## Wanted:

Looking for pots for plants, used or new, plastic or other. 218-556-4505.

Your unwanted push button TrimLine phone. Tile cutting saw. 218-224-3405.

Good used Rainbow vacuum cleaner, older style. Call 218-444-9794.

Chevy HHR and minor repair may be possible. Call or text: 218-368-2369.

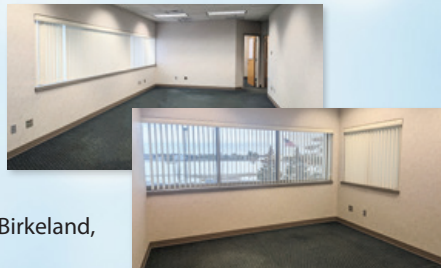
## We are looking for you!

Beltrami Electric Cooperative is looking for **Dale Goggleye**, (Cass Lake, Minn.). Please call **218-444-2540** if you have any information.



## PROFESSIONAL OFFICE SPACE AVAILABLE FOR LEASE

**Suite# 203:** Features 923-sq. ft office suite, including a reception area plus three separate office suites. Will modify to suit. Second-floor location, elevator, and adjacent conference/meeting room. Located in a safe, clean, quiet, low-traffic area of a well-maintained professional building.



For further details on this space, contact Mike Birkeland, Beltrami Electric Cooperative, **218-444-2540**.

## Beltrami Electric Cooperative's headquarters

## FEBRUARY READER'S CONTEST (NEW!)

For your chance to be entered in a drawing to **win a \$10 credit** on your bill, correctly answer the questions and include with your payment or mail to: BEC, P.O. Box 488, Bemidji, MN 56619. Or email answers to [info@beltramelectric.com](mailto:info@beltramelectric.com) with the subject line "Reader's Contest." Be sure to include your name and BEC account number. **Entries must be received by Feb. 25.**

1. Right of way refers to a \_\_\_\_\_ underneath or around power lines that your electric cooperative maintains and clears for safety and reliability.
2. Tankless water heaters can draw as much as \_\_\_\_\_ kW, compared to \_\_\_\_\_ kW for traditional tank water heaters.
3. How do you stay up to date with the co-op? Check all that apply:

- NORTHERN LIGHTS NEWSLETTER  
  BEC WEBSITE  
  RADIO  
  E-MAIL  
  DIRECT MAIL  
 SOCIAL MEDIA  
  BILL MESSAGES/INSERTS  
  AUTOMATED PHONE CALLS  
  E-NEWSLETTER

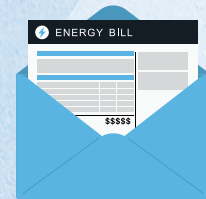
Member Name:	BEC Account Number:
<input type="text"/>	<input type="text"/>



## NEED HELP PAYING YOUR ELECTRIC BILL?

### Energy assistance may be available!

The Energy Assistance Program (EAP) helps pay for home heating costs and furnace repairs for income-qualified households. We urge you to contact them immediately to avoid disconnection if you feel you are eligible for aid. (Eligibility is based on energy costs, household size and the most recent month of income.)



**BI-CAP IN BEMIDJI**  
6603 Bemidji Ave N  
Bemidji, MN 56601  
218-751-4631

**BI-CAP IN WALKER**  
8245 Industrial Park Rd NW  
Walker, MN 56484  
218-547-3438

**KOOTASCA**  
201 4th Street NW, Suite 130  
Grand Rapids, MN 55744  
218-999-0824

**LEECH LAKE**  
115 6th St  
Cass Lake, MN 56633  
218-335-3783

**MAHUBE-OTWA**  
120 North Central Ave  
Park Rapids, MN 56470  
218-847-1385

**RED LAKE**  
15809 High School Dr  
Red Lake, MN 56671  
218-679-3350



### OR APPLY ONLINE

Visit [energy-assistance.web.commerce.state.mn.us](http://energy-assistance.web.commerce.state.mn.us) for EAP income guidelines and program information.



# UNCASHED CAPITAL CREDIT CHECKS

Capital credit checks issued to these former members in December 2024 were returned to BEC. If you know anyone on this list, let them know they can contact our office by calling **218-444-2540** or **1-800-955-6083** or via email at [info@beltramelectric.com](mailto:info@beltramelectric.com) to update their contact information and claim their capital credits. A complete list of unclaimed capital credits can be found at [beltramelectric.com/capital-credits](http://beltramelectric.com/capital-credits).

ADDISON, FRANKLIN D.; HUDSON, WIS.  
ALEXANDER, BEATRICE L.; SHEVLIN, MINN.  
ALLEN, CHRISTOPHER AND ALLEN, SHELLEY; DILLWORTH, MINN.  
ALLEN, MICHAEL D. AND ALLEN, NICOLE M.; BEMIDJI, MINN.  
ANDERSON, RALPH J.; FRESNO, CALIF.  
ANDREWS, RICHARD F.; HUTCHINSON, MINN.  
ASHMORE, CHRIS W. AND ASHMORE, ROBIN L.; BRAINERD, MINN.  
AUGINASH, JANA S.; DULUTH, MINN.  
AUNE, BEN; SAN RAFAEL, CALIF.  
AUNE, WAYNE V.; SUPERIOR, WIS.  
BACHAN, NORAL L.; LOUDON, N.H.  
BAER, KEITH A. AND BAER, SANDY K.; DICKINSON, N.D.  
BAKER, JEREMY M. AND BAKER, KACEE J.; COLBERT WASH.  
BATDORF, JOYCE M.; ST. PAUL, MINN.  
BEHANNA, CHRISTINE A.; BEMIDJI, MINN.  
BELLANGER, VICKI; BEMIDJI, MINN.  
BENAIS, LAUREN M.; RED LAKE, MINN.  
BERG, JANET D.; RIVERTON, UTAH  
BETZ, GEORGE E. AND BETZ, LISA A.; MAPLE GROVE, MINN.  
BEYL, VINCE P.; BEMIDJI, MINN.  
BIEBIGHAUSER, JOEL W.; PEQUOT LAKES, MINN.  
BIEGANEK, THOMAS; BEAVERTON, MICH.  
BJORKSTRAND, TINA; ROCHESTER, MINN.  
BLEGEN, STANLEY A. AND BLEGEN, CARLA I.; STAPLES, MINN.  
BLIGHT, RAY A.; GOLDEN VALLEY, ARIZ.  
BOYD, BRANDON J. AND BOYD, ROCHELLE D.; BEMIDJI, MINN.  
BRAKNER, GLEN AND BRACKNER, JOAN M.; PAOLA, KAN.  
BRANDBOG, MICHAEL J. AND KIRBY, MICHELLE L.; BEMIDJI, MINN.  
BRASTAD, KALE E. AND BRASTAD, HEATHER; LITTLE FALLS, MINN.  
BRONG, DONALD; PLAINFIELD, ILL.  
BROOKS, DEBRA J.; BEMIDJI, MINN.  
BROUGHTON, WARREN L. AND BROUGHTON, KAREN A.; NORTHFIELD, MINN.  
BROWN, JOHN AND BROWN, LINDA; COLORADO SPRINGS, COLO.  
BRUGUIER, BETSY A.; MINNEAPOLIS, MINN.  
BRYAN, SAMUEL T.; SHEVLIN, MINN.  
BURANDT, THOMAS AND BURANDT, THERESA; SAVAGE, MINN.  
BURGESS, RUSSELL AND BURGESS, NANCY; LAPORTE, MINN.  
CAMPBELL, AMANDA M.; MARICOPA, ARIZ.  
CAMPBELL, BRANDON W.; ST. PAUL, MINN.  
CAMPBELL, JAMES E. AND CAMPBELL, JEANETTE; MARCEL, MINN.  
CARROW, JAMES E. AND ANDERSON, JUDITH B.; LA SALLE, ILL.  
CARTER, FRANCES; BEMIDJI, MINN.  
CASKEY, LORRIE L.; MOORHEAD, MINN.  
CLEVINGER, KENDALL L.; ST. PAUL, MINN.  
CLOUD-HAMMITT, DELORES O.; BEMIDJI, MINN.  
CONWAY, MYRNA; FARGO, N.D.  
CREVEY, MIKE H.; MINNEAPOLIS, MINN.  
CROMPTON, WILTSE; TOMBALL, TEXAS  
CUTBANK, RHONDA; REDBY, MINN.  
DAHLE, MICHAEL C.; SILVER BAY, MINN.  
DAVIS, DIANE A.; BEMIDJI, MINN.  
DENTON, MELANIE S. AND LAFRENIER, JEFF; ALBERT LEA, MINN.  
DETERMAN, REBECCA A.; PARK RAPIDS, MINN.  
DONNELL, DAVID B., JR.; REDBY, MINN.  
DOWNWIND, DESIRAE D.; REDBY, MINN.  
DWORSHAK, JILL A.; REDWOOD FALLS, MINN.  
ECKBERG, JOSH W. AND COUMBE, SARAH M.; BEMIDJI, MINN.  
ELTON, KATHY J.; BEMIDJI, MINN.  
ERICKSON, JEFFREY A.; MOUND, MINN.  
ERICKSON, REX AND ERICKSON, HEIDI; FREDERIC, WIS.  
ESSNER, RUSSELL D.; BEMIDJI, MINN.

FAIRBANKS, NICOLE J.; BEMIDJI, MINN.  
FAJARDO, DALENE R.; REDBY, MINN.  
FAULKNER, GARY L.; COLORADO SPRINGS, COLO.  
FILSMYER, KAREN J.; BAXTER, MINN.  
FINEDAY, FREIDA M.; THIEF RIVER FALLS, MINN.  
FOGELSON, DENNIS J. AND FOGELSON, PERNEY A.; ALBERTVILLE, MINN.  
FORSBERG, MICHAEL L.; ULEN, MINN.  
FOSTER, MICHAEL J. AND BAILEY, TAMRON S.; LAPORTE, MINN.  
FREHSE, RANDY AND FREHSE, SARA M.; DULUTH, MINN.  
FUKINO-MALASKI, MARIE J.; LATHAM, N.Y.  
FYNBOH, PAUL M.; PINE RIVER, MINN.  
GARCIA, CAROLYN P.; RICHMOND, CALIF.  
GARDNER, ROBERT; CRANE, MONT.  
GIBSON, DANA; COON RAPIDS, MINN.  
GIESE, TED A., JR.; HACKENSACK, MINN.  
GLADEN, DANICA R.; PEQUOT LAKES, MINN.  
GOGGLEE, VICKY G.; CASS LAKE, MINN.  
GORA, KEITH M.; BEMIDJI, MINN.  
GOURNEAU, JONATHAN R. AND GOURNEAU, KIMBERLEY A.; MANKATO, MINN.  
GRANDBOIS, SHELLEY A.; CASS LAKE, MINN.  
GRITZMACHER, HAL AND GRITZMACHER, SHARON; BEMIDJI, MINN.  
GRONBERG, DONALD R.; LONG LAKE, MINN.  
GROVE, STEVEN AND GROVE, TRACY; BEMIDJI, MINN.  
GROVER, AMANDA J. AND GROVER, JAMIE J.; HOUMA, LA.  
GUGLIELMO, MARY; WEIRTON, W. VA.  
GUTHRIE, EUNICE F.; FARGO, N.D.  
HALL, TODD D.; BEMIDJI, MINN.  
HALLBECK, ROY A.; MINNEAPOLIS, MINN.  
HALLETT, LINDA K.; RED LAKE, MINN.  
HAMES, ORVILLE A. AND HAMES, CARMA; REMSEN, IOWA  
HANSON, PETE L. AND HANSON, MARY K.; PINE RIVER, MINN.  
HARRINGTON, DANA L.; BEJOU, MINN.  
HARRIS, BRYAN E. AND HARRIS, LYNMARREE R.; LAKE CITY, MINN.  
HARTFIELD, ROBERT W. AND HARTFIELD, GLORIA J.; WAUSAU, WIS.  
HAUGAN, TIFFANY R. AND HAUGAN, DANIEL W.; BEMIDJI, MINN.  
HAUGE, BRENT M.; FERGUS FALLS, MINN.  
HAUGEN, BARBARA J.; CASS LAKE, MINN.  
HEIKKILA, KATHLEEN C.; PORT RICHEY, FLA.  
HELLER, CHARLES AND HELLER, JOY A.; BEMIDJI, MINN.  
HERMAN, MARLENE J.; CLEAR LAKE, MINN.  
HIMES, KEVIN E.; CASS LAKE, MINN.  
HINKEMEYER, JUNE; CASS LAKE, MINN.  
HOFSTADTER, DEBBIE; CASS LAKE, MINN.  
HOLLERUD, SHARON K.; ROSE CREEK, MINN.  
HUGES, JANET M.; TAYLORS FALLS, MINN.  
HUNKE, PATRICK P.; WADENA, MINN.  
HURLBERT, DAVID L.; BEMIDJI, MINN.  
IRONS, SHELLEY A.; CASS LAKE, MINN.  
JANSSEN, CHRISTOPHER A.; CAMBRIDGE, MINN.  
JARMAN, ERNEST O.; REVOCABLE TRUST; WALKER, MINN.  
JOHNSON, DANIEL H.; BEMIDJI, MINN.  
JOHNSON, GAYLORD; MINNEAPOLIS, MINN.  
JOHNSON, JOHN L.; NICEVILLE, FLA.  
JOHNSON, KENNETH D. AND JOHNSON, CARRIE A.; TWIN FALLS, IDAHO  
JOHNSON, LENA; REDBY, MINN.  
JOHNSON, TRINA M.; REDBY, MINN.  
JONES, SHARON J. AND MARTELL, CLIFFORD J.; REDBY, MINN.  
KATZ, DAVID A.; NEVIS, MINN.  
KELLEY, FRANCIS A. AND KELLEY, CATHERINE L.; LOMBARD, ILL.  
KIRBY, RENE M.; BEMIDJI, MINN.  
KLEEN, GARY AND KLEEN, KATHY; BERTHA, MINN.  
KLINE, ROBERT L.; COAL VALLEY, ILL.  
KLINKE, MARY J.; BEMIDJI, MINN.  
KNIGHT KAP AND MISENER, DENNIS; BEMIDJI, MINN.  
KNUTSON, BONNIE L.; LINCOLN CITY, ORE.  
KOCH, LUANNE S.; DEER RIVER, MINN.

KOEPP, RENAE AND KOEPP, DAVID; BEMIDJI, MINN.  
KYLE, KEVIN; MINNEAPOLIS, MINN.  
LAJEUNESSE, ASHLEY K.; BEMIDJI, MINN.  
LAMPERT, CARROLL; INTERNATIONAL FALLS, MINN.  
LARGE, JONATHAN AND LARGE, CINDY; MAHNOMEN, MINN.  
LAROSE, MARIA L.; ST. PAUL, MINN.  
LARSON, MARK D.; GARY, MINN.  
LASLEY, GILBERT E.; RED LAKE, MINN.  
LESTER, HELEN M.; SPIRIT LAKE, IOWA  
LIDBERG, BONNIE N.; ANOKA, MINN.  
LIND-WHEATLEY, KRISTI K.; MENAHO, MINN.  
LIPPETT, NANCY H.; MADISON, WIS.  
LONGCLAWS, RONALD J.; RED LAKE, MINN.  
LUKE, LEAH M.; ST. JAMES, MINN.  
LUSSIER, KRISTIE L.; RED LAKE, MINN.  
MCCONAHA, SARAH R.; CASS LAKE, MINN.  
MCCRAE, ELLA I.; BLACKDUCK, MINN.  
MCDONALD, CANDEE L.; BEMIDJI, MINN.  
MAGOON, RONALD D.; MEDFORD, ORE.  
MALONE, LEJJEAN; BEMIDJI, MINN.  
MASON, CLAUDINE; MINNEAPOLIS, MINN.  
MASON, RONALD E., JR. AND KOHL'S RESORT, INC.; EXCELSIOR, MINN.  
MASTIN, MARIE M.; BEMIDJI, MINN.  
MERCK, LEON G.; BEMIDJI, MINN.  
MEYERS, PAULINE A. AND HIGGINBOTHAM, ALEX D.; BEMIDJI, MINN.  
MIDDLETON, PAM A. AND MIDDLETON, GARY D.; DEER RIVER, MINN.  
MILLER, JASON AND HERRICK, MINDY; RED WING, MINN.  
MILLER, KEVIN J.; SHAKOPEE, MINN.  
MILLER, MICHAELA A.; SOUTH HAVEN, MINN.  
MOLZ, ERICA B. AND ELLIS, MICHAEL T.; SIOUX FALLS, S.D.  
MONSON, RUTH E.; PHOENIX, ARIZ.  
MONSON, SHARON K.; MINNETONKA, MINN.  
MOORE, CARRIE L.; BLACKDUCK, MINN.  
MOORE, CHRIS A.; BANCROFT, IOWA  
MORRELL, ROBERT F. AND MORRELL, MICHELLE E.; GRANTHAM, N.H.  
MORTENSON, JON AND MORTENSON, DIANNA; ANDOVER, MINN.  
MOSHER, MARIA L. AND MOSHER, MICHAEL L.; BEMIDJI, MINN.  
MYHRE, SHANE; RED LAKE FALLS, MINN.  
NAGLE, MATTHEW A. AND NAGLE, KIMBERLE G.; BEMIDJI, MINN.  
NEADEAU, SHEILA R.; RED LAKE, MINN.  
NEI, FRANK D.; LAPORTE, MINN.  
NELSON, SIDNEY E.; BIG FALLS, MINN.  
NOKELBY, BERNICE Y.; EAST GRAND FORKS, MINN.  
NORD, GERALD H.; STANCHFIELD, MINN.  
OAKGROVE, JULIA L.; WAITE PARK, MINN.  
OKANE, KARYN; BEMIDJI, MINN.  
OLIVER, JOHN C. AND OLIVER, JOANN G.; ST. PAUL, MINN.  
OSTMAN, RITA J.; CASS LAKE, MINN.  
PACHECO, LEANNE M.; RED LAKE, MINN.  
PARRA, ALEX R. AND LABENZ, MICHAEL T.; HARLAN, IOWA  
PARTRIDGE, MAXINE M.; WALKER, MINN.  
PASSALAEQUA-MILLER, ARLENE; LAPORTE, MINN.  
PEASLEY, TORI J.; GRAND RAPIDS, MINN.  
PETER, BEN A.; BEMIDJI, MINN.  
PETERSON, JAN; CANNON FALLS, MINN.  
PORT, THOMAS G. AND PORT, LAURA C.; ESCONDIDO, CALIF.  
PRICE, ANGELA L.; FRAZEE, MINN.  
PUPPE, JAMES E. ESTATE; GRAND FORKS, N.D.  
RADTKE, ANDREW; DULUTH, MINN.  
RASMUSSEN, RICHARD AND RASMUSSEN, JENNIFER; WASILLA, ALASKA  
REIGLE, RONALD C. AND REIGLE, LYNNE A.; MINNETONKA, MINN.  
REINARZ, KENNETH; HATTON, N.D.  
RICHARDSON, GERALDINE; EAGAN, MINN.  
RICO, JEANINE M.; CASS LAKE, MINN.  
RIES, RONALD AND RIES, ROBIN; PEQUOT LAKES, MINN.  
RISLAND, OLE O., JR. AND RISLAND, LINDA M.; BEMIDJI, MINN.

RIZZI, ROBERT; NEVIS, MINN.  
ROBINSON, CAROL J.; BEMIDJI, MINN.  
ROBINSON, ROY R., JR.; NEWARK, ILL.  
ROGNESS, STEPHEN AND ROGNESS, PAT; CROSBY, MINN.  
ROMINE, ROBIN L.; BLACKDUCK, MINN.  
ROY, JOEL A.; CASS LAKE, MINN.  
ROY, SHELLEY L.; CASS LAKE, MINN.  
RUBASH, MYRTLE A. AND DAHLBERG, DELORES; INVERNESS, FLA.  
ST. MARTIN, SAUNDA; BEMIDJI, MINN.  
SARVEY, JOELAND SARVEY, CRYSTAL; RAPID CITY, S.D.  
SAUNDERS, CHAD I.; BEMIDJI, MINN.  
SCHAFFER, RICHARD AND SCHAFFER, MARY K.; GRAND FORKS, N.D.  
SCHMIDT, DARREL F.; ANNANDALE, MINN.  
SCHUEPPERT, BARBARA R.; BEMIDJI, MINN.  
SCHULTZ, PETER M. AND SCHULTZ, HEATHER E.; BEMIDJI, MINN.  
SCHULTZ, ROBERT C. AND SCHULTZ, KATHRYN L.; WALKER, MINN.  
SCHULZ, CHRIS; OSAGE, MINN.  
SCHWARZ, CLINTON A.; BAUDETTE, MINN.  
SEADO, RICHARD; BEMIDJI, MINN.  
SHASKE, LORI A.; BEMIDJI, MINN.  
SIBELL, DARWIN; OSAKIS, MINN.  
SARGVA, MARGARET R.; RED LAKE, MINN.  
SJOSTRAND, DAWN H.; HALLOCK, MINN.  
SMIAR, PAUL; WACONIA, MINN.  
SMITH, EDITH A.; CASS LAKE, MINN.  
SMITH, MICHAEL C.; INVER GROVE, MINN.  
SMITH, SHANE M.; RED LAKE, MINN.  
SODERSTROM, STACY L.; OSAKIS, MINN.  
SOLBERG, PREVIN; BOVEY, MINN.  
STANESCU, EARL A.; BLACKDUCK, MINN.  
STEILE, TIANA M.; BEMIDJI, MINN.  
STEVENS, COLLEEN M.; BEMIDJI, MINN.  
STURIES, MILTON K. AND STURIES, SHIRLEY A.; OGDEN, IOWA  
SWAFFORD, ROBERT H. AND SWAFFORD, REBECCA; BEMIDJI, MINN.  
SWANSON, BARBARA; MINNEAPOLIS, MINN.  
SWEDBERG, JILL R.; BLACKDUCK, MINN.  
TATE, JAMES E.; BEMIDJI, MINN.  
THOMAS, KEITH C. AND THOMAS, VICTORIA; CASS LAKE, MINN.  
TOLLEFSON, RICHARD T.; BEMIDJI, MINN.  
TOMPKINS, LAURA J. AND TOMPKINS, RICK; CASS LAKE, MINN.  
TONCE, DAVID A. AND TONCE, HANNAH R.; CROOKSTON, MINN.  
TOWNLEY, NICHEL L. AND TOWNLEY, DOUGLAS E.; DULUTH, MINN.  
TYK, CARTER AND TYK, KIMBERLEY S.; WALKER, MINN.  
VANDERHEYDEN, JEANNETTE AND VANDERHEYDEN, SCOTT A.; BEMIDJI, MINN.  
VANEK, BARBARA A.; SHAKOPEE, MINN.  
WAKONABO, CHRISTOPHER; DEER RIVER, MINN.  
WALKER, REBECCA N.; BEMIDJI, MINN.  
WARRINER, WEBSTER; ST. PAUL, MINN.  
WEATHERFORD, STACY AND BOWS ONLY; WALKER, MINN.  
WEEMS, MARK J. AND WEEMS, LAURIE A.; BEMIDJI, MINN.  
WHITE, ROBIN A. AND WHITE, MELISSA A.; ST. FRANCIS, MINN.  
WHITE, RUSSELL D.; CASS LAKE, MINN.  
WHITEFEATHER, BONITA R.; REDBY, MINN.  
WICK, STUART D.; BEMIDJI, MINN.  
WICZEK, JACQUELINE J.; BEMIDJI, MINN.  
WILLIAMSON, JAMES A.; BEMIDJI, MINN.  
WINDOM, GEORGIANA; MINNEAPOLIS, MINN.  
WOLFF, ADAM P. AND WOLFF, DANA R.; RICE, MINN.  
WOOD, NORMAN; INTERNATIONAL FALLS, MINN.  
WYMORE, CHARLES AND WYMORE, KAY; HOMOSASSA, FLA.  
YATES, LINDSAY A.; BEMIDJI, MINN.  
ZAWADZKI, CHRIS; WALKER, MINN.  
ZIEGLER, ROBERT L.; BLACKDUCK, MINN.  
ZUEHLSORFF, DOUGLAS E. AND ZUEHLSORFF, JOAN E.; BURNSVILLE, MINN.



FEB 2025 | VOL. 72 | NO. 2

Northern Lights (USPS 016488)

Published monthly by Beltrami Electric Cooperative Inc., 4111 Technology Drive NW, Bemidji, Minnesota 56601-5128. Subscription rate is \$5. Periodicals postage paid at Bemidji, MN 56601.

**POSTMASTER:** Send address corrections to Beltrami Electric Cooperative Inc., P.O. Box 488, Bemidji, Minnesota 56619-0488.

### OFFICERS AND DIRECTORS

**Chair** ..... John Lund, *DISTRICT 7*

**Vice Chair** ..... Sue Kringen, *DISTRICT 8*

**Secretary** ..... Murl Nord, *DISTRICT 1*

**Treasurer** ..... Sharon Lembke, *DISTRICT 9*

**Directors:** Charlie Perkins, *DISTRICT 2*; Kevin Geerdes, *DISTRICT 3*; Craig Gaasvig, *DISTRICT 4*; Robert Wallner, *DISTRICT 5*; Rick Coe, *DISTRICT 6*

**President and CEO** ..... Jared Echternach

**Editor** ..... Angela Lyseng

**Office Hours:** 8:00 a.m. – 4:30 p.m.  
Monday – Friday

**Telephone:** 218-444-2540 or  
1-800-955-6083

**Website:** [www.beltramielectric.com](http://www.beltramielectric.com)

**Email:** [info@beltramielectric.com](mailto:info@beltramielectric.com)

### MN STATE ELECTRICAL INSPECTORS

Any time you or an electrician does wiring or other electrical work at your home or farm, Minnesota state law requires a state wiring inspector to conduct a proper inspection of the work. A rough-in inspection must be made before any wiring is covered. A final inspection is also required. Inspectors can be reached weekday mornings between 7 a.m. and 8:30 a.m. Find service territories for electrical inspectors here: <https://workplace.doli.state.mn.us/jurisdiction/>

### BELTRAMI & HUBBARD COUNTIES:

Wade Koons | 218-580-8589  
[wade.koons@state.mn.us](mailto:wade.koons@state.mn.us)

### CASS & HUBBARD COUNTIES:

Tony Kohrs | 218-616-1554  
[tony.kohrs@state.mn.us](mailto:tony.kohrs@state.mn.us)

### GOPHER STATE ONE CALL

1-800-252-1166 or 811  
[www.gopherstateonecall.org](http://www.gopherstateonecall.org)



Anyone who plans to dig is required by law to notify the state of their intentions at least 48 hours in advance. All digging requires a 48-hour notification so that buried telephone lines, TV cable, pipelines, and utility electric lines can be located to ensure that none will be severed or damaged.

### OUR MISSION STATEMENT

To provide excellent value to our members through the safe delivery of reliable electric service, excellent member service and innovative energy solutions at fair and reasonable prices.

This institution is an equal opportunity provider and employer.



**Beltrami Electric Cooperative Inc.**

Your Touchstone Energy® Cooperative

Connecting Communities.  
Powering Life.

## VEGETATION MANAGEMENT

### Why it matters to you

Power outages can occur when trees, shrubs or bushes grow too close to power lines. By managing vegetation, your electric cooperative keeps your power safe and reliable.

Trees and brush in rights of way pose a safety hazard as they can be conductors of electricity – contact with power lines can cause shock or fatal electrocution. Clear rights of way ensure crews can safely and efficiently restore service. Maintaining our rights of way also helps to control costs by reducing outages and damage to electrical equipment.

**Right of way (ROW):** refers to a strip of land underneath or around power lines that your electric cooperative maintains and clears. Trees must grow at a distance far enough away from conductors that they will not cause harm to individuals or disruption to electrical service.

Beltrami Electric will contract with Carr’s Tree Service for vegetation management in our area in 2025.

**Work will be conducted in the following townships and areas in 2025:** Alaska-East, Eland, Kelliher, Lammers, Liberty, Moose Lake, Port Hope, Red Lake, Shotley East & West.

