

NORTHERN

L I G H T S

July 2025

CONGRATULATIONS

CLASS OF 2025 BELTRAMI ELECTRIC COOPERATIVE SCHOLARSHIP RECIPIENTS

Beltrami Electric Cooperative awards scholarships annually to students attending seven area high schools within BEC's service territory, and one at-large scholarship to a student who attends a school other than the seven listed below. To be eligible, the student's parent(s) or guardian must be a Beltrami Electric member and the student must show proof of enrollment in a post-secondary education institution the following year. Each school selected the winners through committees or guidance centers. Beltrami Electric scholarships are funded with unclaimed capital credits that otherwise would be forfeited to the state.



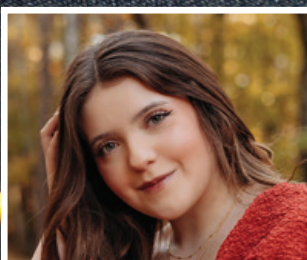
ZACHARIA CHRISTENSON

Bemidji High School
(Parents: Christina Christenson,
Jeremy Christenson)



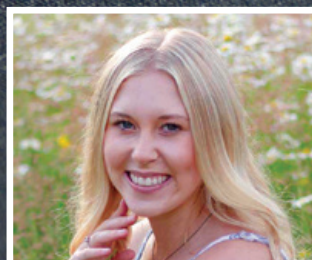
AUBREE HENRIKSEN

Blackduck High School
(Parents: Chris & Gretchen
Henriksen)



AUBREE BRUNELLE

*Cass Lake-Bena
High School*
(Parents: William & Wendy Brunelle)



ALEXIS HERRON

Kelliher High School
(Parents: Brandon &
Teri Herron)



KATE SHADRICK

Laporte High School
(Parents: Steve & Stacie
Shadrick)



AH'LICIA ROY

Red Lake High School
(Parents: Alexandra Roy &
Courtney Barrett)



KATRYN SMITH

*Walker-Hackensack-Akeley
High School*
(Parents: Justin & Jenni Campbell)



AVA KOWALCHYK

Andover High School
(Parents: Christine & Kevin
Kowalchuk) *At-Large Scholarship

Beltrami Electric is honored to help local students take the next step in their education through our scholarship program. Congratulations to this year's recipients — we're cheering you on as you pursue your goals!



**Beltrami Electric
Cooperative Inc.**
Your Touchstone Energy® Cooperative

Official notice of 2025 annual meeting / **3**

Unclaimed capital credits list / **4-5**

SAVE THE DATE – 85TH ANNUAL MEETING

WEDNESDAY, AUG. 6, 2025
BELTRAMI COUNTY FAIRGROUNDS



Understanding what's yours and what's ours – staying storm-ready this summer

by Jared Echternach, *Beltrami Electric Cooperative president and CEO*

As we step into July, with its long sunny days and the buzz of summer activity, we also find ourselves in the season where Mother Nature can change her mind in an instant. Along with backyard barbecues and trips to the lake, summer in northern Minnesota often brings severe weather — strong winds, lightning and heavy rain — all of which can take a toll on our electric system.

At Beltrami Electric Cooperative, we're always prepared for storm season. Our crews are on call and ready to respond when outages occur, working efficiently and safely to restore service. When the lights go out, restoring power is not always as simple as flipping a switch — especially when damage extends beyond the cooperative's equipment.

That's why it's important for all of us, as members of the co-op, to understand the difference between the equipment your cooperative maintains and what is considered the member's responsibility. This knowledge can help avoid delays and ensure the restoration process is smooth and safe for everyone involved. Here's a quick breakdown:

Beltrami Electric Cooperative is responsible for:

- Utility poles
- Distribution power lines
- Electric meters
- Transformers

Members are responsible for:

- The meter base (the box the meter plugs into)
- The weatherhead and service mast on your home for overhead service lines
- Underground service lines running from the meter to your home or business
- Your electrical service panel

If any of the equipment on your side is damaged during a storm, it's your responsibility to contact a licensed electrician to make repairs. For safety reasons, our crews cannot reconnect power until the member-owned equipment is in proper working condition. Taking care of these repairs promptly helps line crews restore power faster and keeps everyone safe.

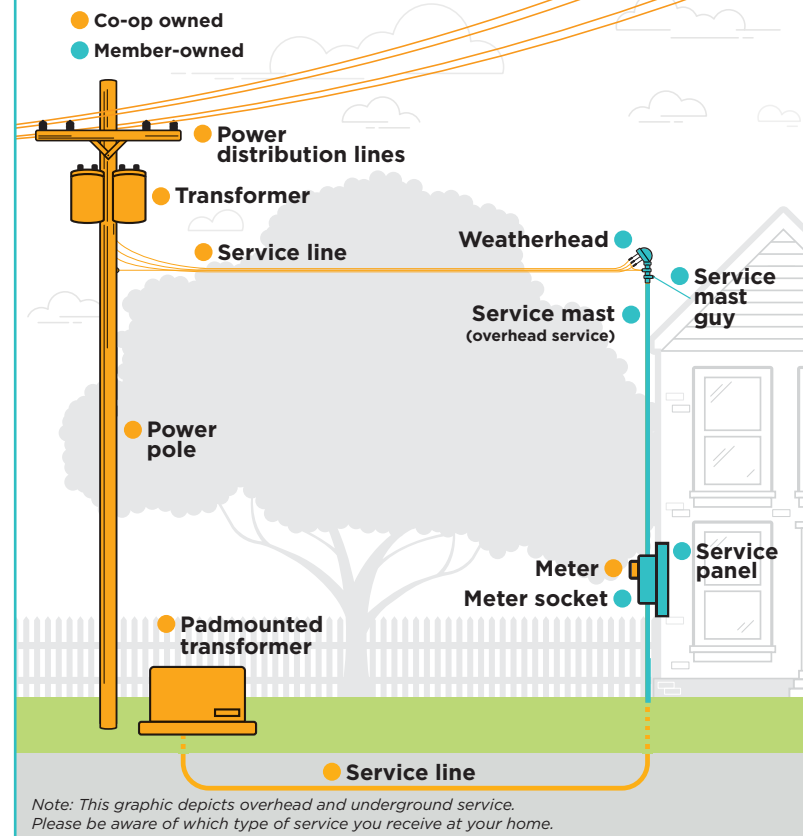
Another essential part of keeping the power flowing during

storms is vegetation management. We all appreciate the natural beauty of our region, and overgrown trees and limbs can interfere with power lines and cause blinks and outages. That's why your cooperative maintains a year-round vegetation management program across our service territory. If you see tree limbs dangerously close to power lines near your home or business, please call our office. We'll take care of it safely and professionally.

We know how much you rely on electricity for comfort, security and convenience — especially when weather turns unpredictable. By understanding your role and the co-op's role, and by staying proactive about potential hazards, we

Who Owns What? Electric Co-op Owned Equipment vs Member-Owned Equipment

This graphic depicts equipment owned by the co-op (in gold) and the member (in blue). If a storm damages any equipment owned by the co-op, we are responsible for repairs. If a storm damages any member-owned equipment, the member is responsible for repairs. Members should hire a licensed electrician when making any repairs to member-owned equipment.



can work together to ensure faster repairs and a more resilient electric system for our entire community.

As always, if you have questions about your electrical equipment or need help determining what's yours and what's ours, our team is here for you. Give us a call at **218-444-2540** or email info@beltramielectric.com. Stay safe, enjoy your summer — and thank you for being part of the Beltrami Electric Cooperative family.

85th annual meeting

Our 85th annual meeting will take place during the Beltrami County Fair on Wednesday, Aug. 6, and we call it Beltrami Electric Cooperative Night at the Fair. We'll have all the highlights our members have



come to love: bucket truck rides, a duck pond for the kids, a live safety demonstration and, of course, music. We are bringing back Figuring It Out, the Abello family singers from Bemidji for a free concert at the Grandstand.

Members who register for the meeting will also receive "food bucks" to use at participating fair vendors — so you can enjoy your favorite fair treats while learning more about your cooperative.

Whether you're a long-time member or just recently joined our co-op family, I encourage you to stop by, connect with fellow members and help us celebrate this important milestone. Your participation matters. It's what keeps our cooperative strong, resilient and rooted in the values we share. I hope to see you there.

JOIN US FOR BELTRAMI ELECTRIC'S 85TH ANNUAL MEETING

WEDNESDAY, AUG. 6, 2025

BELTRAMI ELECTRIC'S NIGHT AT THE FAIR EVENTS:

- Annual Meeting (5 p.m.) at the Marilyn Shutter Stage
 - Register for the meeting by 6:30 p.m. to receive BEC Food Bucks to spend at food vendors that night
- Bucket rides for kids
- Duck pond for kids
- Watch a live high-voltage electrical safety demo by BEC's lineworkers
- **FREE PARKING** plus shuttles to the stage
- **FREE CONCERT** in the grandstand at 6:30 p.m. featuring Figuring it Out – the Abello Acoustics Band



OFFICIAL NOTICE OF ANNUAL MEETING

The 85th annual meeting of the members of Beltrami Electric Cooperative, Inc. will be held at the Marilyn Shutter Stage on the Beltrami County Fairgrounds on **Wednesday, Aug. 6, 2025, at 5 p.m.**, for the following purposes:

1. To pass upon reports covering the previous fiscal year;
2. To elect three (3) directors of the cooperative in accordance with the Bylaws, one each in Districts 1, 5 and 8, each for a three-year term;
3. To transact such other business as may come before the meeting.

Murl Nord, Secretary
Beltrami Electric Cooperative, Inc.
Board of Directors
July 1, 2025

NOTE: In order for a member corporation, etc., to participate in business matters, a form must be received by the secretary of Beltrami Electric Cooperative on or before the date of the members' meeting(s). To receive a copy of this form, please contact the cooperative at **218-444-2540**.

UNCLAIMED CAPITAL CREDITS LIST

These former members may contact Beltrami Electric Cooperative by calling the office at 218-444-2540 or

1-800-955-6083 or via email at info@beltramielectric.com.

ADAMS ESTATE, GUY E.; PLYMOUTH, MINN.
ADKINS, GREGORY J. AND REBECCA; CASS LAKE, MINN.
AKERS, GAYLE E. AND WILLIAM R.; WALKER, MINN.
ALLEN, RICHARD C.; BAUDETTE, MINN.
ALLEN, PHILOMENE; REDLAKE, MINN.
ALLEN, LYNN MARIE; BE MIDJI, MINN.
ANDA, CINDY E.; BIG LAKE, MINN.
ANDERSEN, JASON T. AND AMY L.; BIG LAKE, MINN.
ANDERSON, JEANETTE M.; INVER GROVE HEIGHT, MINN.
ANDERSON, RON A.; PINWOOD, MINN.
ANDERSON, MARC S.; NORTHFIELD, MINN.
ANDERSON ESTATE, PATSY; BE MIDJI, MINN.
ANOKA, KIMBERLY P.; CASS LAKE, MINN.
APPLEBEE, LORIE ANN; MINNEAPOLIS, MINN.
BAIRD, VELDON O.; BE MIDJI, MINN.
BAKER ESTATE, DONALD R.; BE MIDJI, MINN.
BALSAM CREEK INC., MASON LAKEWOOD BAR & GRILL; BE MIDJI, MINN.
BANASZEK ESTATE, JEAN; BAGLEY, MINN.
BAROTT, JAMES A. AND LAURA J.; ELY, MINN.
BAROTT, JAMES A.; ELY, MINN.
BARRETT, TYRONE; NEADEAU, FAWN M.; REDLAKE, MINN.
BARRETT, FRANK; REDLAKE, MINN.
BATT, DONALD E.; ROCHESTER, MINN.
BEAUMONT ESTATE, BERT; BEAUMONT, ARLENE; BRAINERD, MINN.
BECKER, MARY C.; BECIDA, MINN.
BECKSTRAND ESTATE, ROGER W.; BAGLEY, MINN.
BELT ESTATE, VERA; MORTON, MINN.
BELMIDJI BUILDING CENTER; BE MIDJI, MINN.
BENDICKSON, HENRY L.; GOODRIDGE, MINN.
BENSON, NANCY; SARTELL, MINN.
BENSON, RICHARD C.; BE MIDJI, MINN.
BENSON ESTATE, JOSEPH; GLENWOOD, MINN.
BERG, CHERYL A.; BE MIDJI, MINN.
BERGREN, JOHN AND SUE; BECIDA, MINN.
BEVER, KENT A.; ALEXANDRIA, MINN.
BILLINGSLEY, CHRISTINA N. AND TYLER K.; BE MIDJI, MINN.
BLACK, IDA; REDBY, MINN.
BLACK-CLOUD SR ESTATE, BENJAMIN R.; REDLAKE, MINN.
BLAKELY ESTATE, PHILLIP E.; WALKER, MINN.
BLUE ESTATE, ROBERT D.; CASS LAKE, MINN.
BOBOLINK ESTATE, MARY ANN; CASS LAKE, MINN.
BODIN, TODD A.; DEER RIVER, MINN.
BOHN ESTATE, RANDY; REDLAKE, MINN.
BOOMGAARDEN, LARRY W. AND KATHY E.; GRAND RAPIDS, MINN.
BORGSTROM ESTATE, RICHARD; TOWER, MINN.
BOSANKO, JENNIFER L.; BLACKDUCK, MINN.
BOSWELL ESTATE, DAVID J.; BE MIDJI, MINN.
BOWDEN, SUSAN M.; CASS LAKE, MINN.
BRADDOCK, SAMMIA J.; REDLAKE, MINN.
BROWN, CHARLES L.; PRIOR LAKE, MINN.
BROWN, JANICE M.; BE MIDJI, MINN.
BRUCE ESTATE, BONITA; WALKER, MINN.
BUBBASTAR II LLC; BE MIDJI, MINN.
BUCKLEY-CONWAY, SUNNY M.; BE MIDJI, MINN.
BUDINGER, BRUCE; ANOKA, MINN.
BURGESS, LARRY C.; RAMSEY, MINN.
BURNS, PAMELA R.; BE MIDJI, MINN.
BYDAL, MICHAEL; CASS LAKE, MINN.
CALDWELL ESTATE, ETHA; CASS LAKE, MINN.
CALHOON ESTATE, HELEN AND COREY; LAPORTE, MINN.
CARLSON, ELIZABETH; WILLMAR, MINN.
CARLSON, PAMELA ROSE; BLOOMINGTON, MINN.
CARR, ALICE V.; PINE RIVER, MINN.
CARSTON, CHARLES; BAUDETTE, MINN.
CARTER, VERNON W. AND BETTY J.; FARMINGTON, MINN.
CASEY ESTATE, SAMANTHA E.; WALKER, MINN.
CASS LAKE EPISCOPAL CAMP; MINNEAPOLIS, MINN.
CHENEY, THOMAS H. AND DOROTHY A.; BE MIDJI, MINN.
CHIPPWEA BIBLE CHURCH; CASS LAKE, MINN.
CHOINARD ESTATE, ROY Z. AND BEVERLY J.; TWIN VALLEY, MINN.
CHRISTENSON ESTATE, MAYNARD O.; SAINT PAUL, MINN.
CIRROCCO ESTATE, CAROL J.; LINDSTROM, MINN.
CLOUD, ARTHUR; WILSON, ROBERTA; PONEMA, MINN.
COCHRAN FAMILY; BURNSVILLE, MINN.
COLEMAN ESTATE, KEN J. AND NORMA P.; DETROIT LAKES, MINN.
COLLEN, MARY C. AND LESTER A.; HINES, MINN.

CONNOR, JONATHAN; CASS LAKE, MINN.
CONNOR, DANIEL L.; BE MIDJI, MINN.
CORRICK ESTATE, LESLIE; WALKER, MINN.
CRAMER, JESSIE M.; CASS LAKE, MINN.
CRAWFORD, RUSSELL S.; NEVIS, MINN.
CUMMINS, ROBERT W. AND LORA S.; PUPOSKY, MINN.
DAHL, EARL D.; ROSEVILLE, MINN.
DANCKER, CHELENE; BLACKDUCK, MINN.
DANIELS, MATTHEW A.; ALEXANDRIA, MINN.
DANIELSON, LINDA A.; BLACKDUCK, MINN.
DANIELSON, ROGER M. AND DONNA K.; BE MIDJI, MINN.
DAY, DONNA L.; CASS LAKE, MINN.
DEBAY, MELANIE G.; BE MIDJI, MINN.
DEBOER, MERLE; NEVIS, MINN.
DEKKER, KENNETH L. AND DIANNA L.; HACKENSACK, MINN.
DEKOSTER, CHRISTOPHER K.; PARK RAPIDS, MINN.
DEMARCO, BLANCA; BE MIDJI, MINN.
DEMARISS ESTATE, BERTUS E.; DELANO, MINN.
DENNIS, JASON T.; BAKER, MINN.
DORAN, MARY A.; BE MIDJI, MINN.
DOUGLAS, BRYAN L.; BLACKDUCK, MINN.
DREXEL, KEVIN M. AND SALLY A.; BE MIDJI, MINN.
DUNBAR, JEFF B.; POGREBA, LEE; BE MIDJI, MINN.
DUY, TERRY L.; BE MIDJI, MINN.
DWIGHT HEATING & A/C INC.; WALKER, MINN.
ECK, DEBBIE; GONVICK, MINN.
ECKSTINE, NORA L. AND KIRK; KETTLE RIVER, MINN.
EIDSMOE, TONYA M.; WARROAD, MINN.
ELLINGSON ESTATE, RONALD; BE MIDJI, MINN.
ELLIS, CHRIS E.; BE MIDJI, MINN.
EMERY, CURTIS V.; MOORHEAD, MINN.
ERICKSON, JAMES CARL; HINES, MINN.
ERICKSON, LEIZA K.; BE MIDJI, MINN.
ERICKSON, SHANNON V.; MENAHA, MINN.
ERICKSON, JOHN E.; TENSTRIKE, MINN.
ERION ESTATE, VAL O.; TRAIL, MINN.
ESTHEY, PATRICK H.; BE MIDJI, MINN.
ETTISH, JENNIFER; BE MIDJI, MINN.
EVANS ESTATE, LYLE R. AND BARBARA E.; PINWOOD, MINN.
FAIRBANKS ESTATE, CHARLES S.; BE MIDJI, MINN.
FAWCETT, CHRIS E.; MINNEAPOLIS, MINN.
FAY ESTATE, NANCY J.; CASS LAKE, MINN.
FEDA, DEBRA L.; BE MIDJI, MINN.
FIELD, KIRK AND KARA; TWIN VALLEY, MINN.
FINCKBONE, LISA M.; BE MIDJI, MINN.
FINEDAY, PATRICIA J.; CASS LAKE, MINN.
FINEDAY ESTATE, SHARON A.; DULUTH, MINN.
FINNEGAN, MICHAEL AND PAULETTE; COOK, MINN.
FISHER ESTATE, HERBERT AND JEANETTE L.; WALKER, MINN.
FLEET, JEFFREY L. AND ANN, M.; BLACKDUCK, MINN.
FOSTER, MICHAEL J.; BLAINE, MINN.
FOUR COUNTY COIL CO INC.; WALKER, MINN.
FRENCH, MARVIN J.; NAYTAHWAUSH, MINN.
FUHRMAN, CHARLES D.; SLEEPY EYE, MINN.
FUNK, MARLA M.; BE MIDJI, MINN.
GALLE ESTATE, WILBERT D.; BE MIDJI, MINN.
GAMBLE, ADAM; BLACKDUCK, MINN.
GASSAWAY, ROBERT; BE MIDJI, MINN.
GENADEK, URSULA M.; BE MIDJI, MINN.
GIBBS ESTATE, RICHARD J.; REDBY, MINN.
GIESE, RONALD J.; LAKE CRYSTAL, MINN.
GILBERT, FREDRICK M.; VERNDALE, MINN.
GISSAL, DANA M.; AND EUGENE THOMAS; N. MANKATO, MINN.
GLADEN ESTATE, SUE; CASS LAKE, MINN.
GOMAN, MICHAEL D. AND AMY L.; DULUTH, MINN.
GOODEN, ERIC J.; CASS LAKE, MINN.
GOULD, ALANNA R.; BE MIDJI, MINN.
GRABHAM, BRAD A. AND ROBIN M.; ANNANDALE, MINN.
GRAGE, MERILEE; BE MIDJI, MINN.
GRAHAM, JOYCE; BE MIDJI, MINN.
GRAHEK, RAY; BRAINERD, MINN.
GRAVES ESTATE, RHONDA S.; BE MIDJI, MINN.
GRIFFIN, CHAD; WALKER, MINN.
GROSH, KATHERINE A.; BE MIDJI, MINN.
GROSZ, JON D.; BE MIDJI, MINN.
GRUMMER, SHIRLEY M.; PERHAM, MINN.
GUIMARAES, NANCY J.; BE MIDJI, MINN.
GUNDERSON, MICHAEL G.; BAGLEY, MINN.
HACHEY, VICKIE A.; BE MIDJI, MINN.
HAEFNER, TRAVIS; WILTON, MINN.
HALE, MIKE L.; BE MIDJI, MINN.
HALSNE ESTATE, DALE E. AND KRISTENE V.; TYLER, MINN.
HAMANN, DONALD P. AND THERESA; WALKER, MINN.
HANSON, KYLE J. AND NICOLE L.; MANKATO, MINN.

HANSON, DOUGLAS AND LEEANN; PLYMOUTH, MINN.
HANSON ESTATE, GARY W.; BE MIDJI, MINN.
HARRIS, JOHN W.; STILLWATER, MINN.
HARRISON, DON C.; CASS LAKE, MINN.
HARSH, JAMES R.; BE MIDJI, MINN.
HARTLAND, WALTER A.; CAMBRIDGE, MINN.
HAUBLE, LEROY M. AND KATHERINE A.; BRAINERD, MINN.
HAWK ESTATE, EDITH M.; BE MIDJI, MINN.
HEAD, ROSE M.; THIEF RIVER FALLS, MINN.
HEGG, CURTIS L. AND LAURA M.; LAPORTE, MINN.
HEIDORF, ESTELLE; ONAMIA, MINN.
HEIKKILA, LOIS S.; SHEVLIN, MINN.
HEILERS, LORI L.; CASS LAKE, MINN.
HEINLE, MARK A.; BOVEY, MINN.
HENNEN, GREG J.; BLACKDUCK, MINN.
HERITAGE HOUSE INC.; BLACKDUCK, MINN.
HERRICK, HUGH AND SHARON; DULUTH, MINN.
HICKS, ANNABELLE M.; MINNEAPOLIS, MINN.
HILL, APRIL L.; REDLAKE, MINN.
HINES, WAYNE W.; BE MIDJI, MINN.
HIRDLER ESTATE, LEROY W.; WALKER, MINN.
HOCKEMEYER, MARVIN G.; SAINT PAUL, MINN.
HOFLAND, ANN C.; BE MIDJI, MINN.
HOFSTADT, BRIAN C.; BENEDICT, MINN.
HOGAN, CHRIS P.; DULUTH, MINN.
HOLLER, RENE L.; WALKER, MINN.
HOLM, CHARLES J. AND SHELLEY R.; BE MIDJI, MINN.
HOLTZ ESTATE, PHYLLIS M.; LITCHFIELD, MINN.
HOLY, MARK D.; EAST GRAND FORKS, MINN.
HOULE, SHERRY L.; CASS LAKE, MINN.
HOWARD, BRIAN AND SARA; BLACKDUCK, MINN.
HRBEK ESTATE, ARDITH M.; WHITE BEAR TOWNSHIP, MINN.
HUD PROPERTY DISP.; BE MIDJI, MINN.
HURD ESTATE, RHONDA E.; CASS LAKE, MINN.
HUSSEIN, MOHAMED R.; BE MIDJI, MINN.
ICEMAN, DONALD; PONEMA, MINN.
IMAGES - JOB STRIDE; REDLAKE, MINN.
INSIDE OUTLET; BOIE, SCOTT; WALKER, MINN.
INTERBAY FUNDING LLC; BE MIDJI, MINN.
ISHAM, FERN M.; CASS LAKE, MINN.
JACKSON, ALBERT F. AND CHARLOTTE; DETROIT LAKES, MINN.
JACKSON ESTATE, RODNEY; BE MIDJI, MINN.
JELOKOV, YURI; GOOD THUNDER, MINN.
JENSEN, DAVID F.; PARK RAPIDS, MINN.
JEWORREK, MARCO AND BRANDY L.; BE MIDJI, MINN.
JOA, DAVID E. AND JOELLEN E.; EAGLE BEND, MINN.
JOHNSON, REBECCA L.; BE MIDJI, MINN.
JOHNSON, DENNIS A.; MADEIRA, MINN.
JOHNSON, LISA M.; TOWER, MINN.
JOHNSON, JOSEPH W.; SAINT PAUL, MINN.
JOHNSON, LANCE H. AND DARRIS D.; BE MIDJI, MINN.
JOHNSON, MELISSA; CLEARBROOK, MINN.
JOHNSON, REBECCA J.; BE MIDJI, MINN.
JOHNSON ESTATE, BILLIE D.; BE MIDJI, MINN.
JOHNSON ESTATE, LORENA M.; CASS LAKE, MINN.
JOHNSON ESTATE, WARREN W. AND BEVERLY M.; CASS LAKE, MINN.
JOHNSON ESTATE, WANDA L.; CASS LAKE, MINN.
JOHNSON ESTATE, WILLIAM L. AND ILAH M.; CHASKA, MINN.
JONES, VICKIE M.; WARROAD, MINN.
JONES, VALENCIA D.; BE MIDJI, MINN.
JONES ESTATE, RUSSELL A.; CASS LAKE, MINN.
JORDAN ESTATE, GARY, LEE AND CONSTANCE I.; BE MIDJI, MINN.
JOSEPHSON, KELLY; BE MIDJI, MINN.
JOURDAN, JON K.; NORTHOME, MINN.
JOURDAN, MAUREEN A.; BE MIDJI, MINN.
JUNEAU ESTATE, JIM E. AND ROSE L.; BROOKLYN PARK, MINN.
JURINA, VERONICA; CASS LAKE, MINN.
KAHLSTORF, JAMES; PARK RAPIDS, MINN.
KEELEY, WILLIAM A. AND DEB K.; BE MIDJI, MINN.
KEHR, JOHN; MORA, MINN.
KERBY ESTATE, JANE Z.; MINNEAPOLIS, MINN.
KESLER, MARTY; BE MIDJI, MINN.
KIGER, DIXIE LEE; SOLWAY, MINN.
KING, TRICIA LEANN; BE MIDJI, MINN.
KIRKMAN, PATRICIA E.; BE MIDJI, MINN.
KITZMAN, MARK AND SANDY; FERGUS FALLS, MINN.
KLAERS, TONY J. AND LIZ M.; BLOOMINGTON, MINN.
KLEIN, KATHRYN; SAINT CLOUD, MINN.
KNOPPS, JOSEPH; MEYERS, KINDRA; BE MIDJI, MINN.
KNOX, DUWAYNE; BE MIDJI, MINN.
KNOX, DOUG M. AND KAREN L.; CROSSLAKE, MINN.
KRAMER ESTATE, EVELYN B.; WILTON, MINN.
KREINER, CHRIS J.; BE MIDJI, MINN.
KROSSEN, MARK AND KAREN; BE MIDJI, MINN.

KRUGER, IONAL L.; APPLE VALLEY, MINN.
KRUSE, DUSTEN M.; BECIDA, MINN.
KUCHENMEISTER, TROY AND TIFFANY M.; BE MIDJI, MINN.
KULZER ROPP ESTATE, CARMEN, M.; BE MIDJI, MINN.
KURTZ ESTATE, ETHEL; BE MIDJI, MINN.
KUSANT, HOLLY S.; BE MIDJI, MINN.
LADY SLIPPER DESIGN; LENGBY, MINN.
LAKE ESTATE, MARY P.; MINNEAPOLIS, MINN.
LAKE REGION PROPERTIES; WATSON, RICK; BE MIDJI, MINN.
LARSEN ESTATE, ROBERT M.; BELLE PLAINE, MINN.
LARSON, JOHN P.; BE MIDJI, MINN.
LASALLE LLC; WALKER, MINN.
LECLAIR, IRENE; GRAND RAPIDS, MINN.
LEE ESTATE, JOSEPHINE L.; CASS LAKE, MINN.
LEPLEY, CLARK L.; PINE RIVER, MINN.
LIGHT, ROBERT M. AND SONJA K.; EDEN PRAIRIE, MINN.
LILLIE ESTATE, DICK L.; WALKER, MINN.
LIPPINCOTT, TODD L.; CASS LAKE, MINN.
LITTLE ESTATE, BUSTER B. AND BONNIE L.; DETROIT LAKES, MINN.
LITTLE ESTATE, NILES B.; REDBY, MINN.
LITTLEWOLF ESTATE, RUPERT; CASS LAKE, MINN.
LOEKEN ESTATE, LYNDIA; MORA, MINN.
LOKEN ESTATE, DIANA; WANNASKA, MINN.
LUKEEN, JUDY L.; BE MIDJI, MINN.
LUDEEN, CHARLES E.; WEST SAINT PAUL, MINN.
LYONS, FRANCIS J. AND HEIDI J.; CASS LAKE, MINN.
M O CHRISTENSON INC.; WALKER, MINN.
MACLEOD, KORPI; BE MIDJI, MINN.
MADDEEN, DEBRA L.; ROCHESTER, MINN.
MAGNUSON, JONATHAN J.; BE MIDJI, MINN.
MAGNUSON ESTATE, VIRGINIA M.; BE MIDJI, MINN.
MAJID, NUZHAT; AHMED, IJAZ; BEAVER BAY, MINN.
MANSON, DAVID E. AND MARILYN R.; LAPORTE, MINN.
MARDEN, JOANNE; BE MIDJI, MINN.
MARIZ, PATRICIA A.; KERRICK, MINN.
MARSH, JOHN E. AND SUSAN; MINNEAPOLIS, MINN.
MARTIN ESTATE, THERESA L.; REDLAKE, MINN.
MASON, KATHRYN M.; BE MIDJI, MINN.
MATTHEWS, MATT R.; BLACKDUCK, MINN.
MATTON, CRYSTAL D.; TOWER, MINN.
MCDONALD, JERRY D. AND CAROLE D.; BAXTER, MINN.
MCKAY, SUSAN A.; LAKEVILLE, MINN.
MCKAY, MARK P.; HIBBING, MINN.
MCKENNETT, NINA C.; OTTERTAIL, MINN.
MCKENNETT ESTATE, RODNEY; CASS LAKE, MINN.
MERRILL ESTATE, ALICE E.; BE MIDJI, MINN.
MILLER ESTATE, WILLIAM M.; WALKER, MINN.
MISENER STATS SPORTS BAR INC.; MASON LAKEWOOD BAR & GRILL; PEQUOT LAKES, MINN.
MISTHAR LLC; PEHRSON, GENE A.; MINNEAPOLIS, MINN.
MODEL CLEANERS; BE MIDJI, MINN.
MOENING, TATE J.; WALKER, MINN.
MOORE ESTATE, SALLY G.; EDINA, MINN.
MORRIS, VICKI L.; BE MIDJI, MINN.
MOUNTAIN, CARSON LEE SR.; DULUTH, MINN.
MURDOCK, MICHAEL D.; COOK, MINN.
MURPHY, DOUGLAS; BE MIDJI, MINN.
MURPHY, JAMES K.; MANKATO, MINN.
MURPHY, BRYAN R.; PUPOSKY, MINN.
MURRAY, MEGAN L.; EAST GRAND FORKS, MINN.
NAUER, CHRISTINE L.; LAPORTE, MINN.
NEADEAU, JACQUELINE; MINNEAPOLIS, MINN.
NEADEAU ESTATE, ALVIN; REDBY, MINN.
NEADEAU ESTATE, MYRON D.; REDLAKE, MINN.
NEER, CATHY M.; BE MIDJI, MINN.
NELSON, DAVID J.; FORT RIPLEY, MINN.
NELSON, TERRY L.; CUSHING, MINN.
NELSON, EDWARD G. AND MARCELLA A.; WALKER, MINN.
NELSON, THOMAS J.; CASS LAKE, MINN.
NELSON, MARY HELEN; SAINT PAUL, MINN.
NELSON ESTATE, ANGELA S.; MINNEAPOLIS, MINN.
NENSON'S PLUMBING & HTG; BLACKDUCK, MINN.
NERUD ESTATE, ELAINE M.; WALKER, MINN.
NESS, RICHARD B. AND DARLENE K.; ADA, MINN.
NEWELL, CHRIS L.; BE MIDJI, MINN.
NEWTON, ADAM E.; TENSTRIKE, MINN.
NICHOL, TODD; NORTHFIELD, MINN.
NIGHTINGALE, DIANE M.; BE MIDJI, MINN.
NORDHEIM, ELIZABETH A.; BE MIDJI, MINN.
NORDLUND, JODI R.; LITTLEFORK, MINN.
NORTH STAR DRILLING, LLC; BRAINERD, MINN.
NORTHERN NATURAL LOG FURNITURE; BE MIDJI, MINN.
NSH NORTH; BE MIDJI, MINN.
OBRIEN ESTATE, JOSEPH J.; AITKIN, MINN.
ODIER, SARAH A.; BAGLEY, MINN.
OFFELIE DAVIS, DIANE; BE MIDJI, MINN.
OHOTTO ESTATE, LILLIE M.; CAMBRIDGE, MINN.
OLDING ESTATE, JULIE M.; BE MIDJI, MINN.
OLEARY ESTATE, MARIA S.; MINNEAPOLIS, MINN.

OLSON, ALAN M.; BECIDJI, MINN.
OLSON, CHERIE L.; HARRISON, DENNIS LEE; CASS LAKE, MINN.
OLSON, REBECCA L.; SARTELL, MINN.
OLSON, BRANDON D.; DETROIT LAKES, MINN.
OLSON ESTATE, HENRY N.; PLYMOUTH, MINN.
O'NEILL, SALLY; HILDENBRAND, TIFFANY L.; CASS LAKE, MINN.
OPHEIM, ERIC AND VAL K.; FERGUS FALLS, MINN.
OPTICAL SOLUTIONS INC.; MINNEAPOLIS, MINN.
OVERBEEK ESTATE, JEANETTE; BECIDJI, MINN.
PARKER ESTATE, EILEEN C.; SAINT CLOUD, MINN.
PAUNA, DOUGLAS L. AND KIMBERLY S.; BECIDJI, MINN.
PEACOCK, JEREMY L. AND HEATHER L.; BECIDJI, MINN.
PEDERSON, CARMELLA H.; BECIDJI, MINN.
PEDERSON, PATRICIA A.; BECIDJI, MINN.
PEELER ESTATE, JERRY R.; CASS LAKE, MINN.
PEGLER ESTATE, JEAN A.; LAPORTE, MINN.
PEMBERTON ESTATE, JOHN C.; CASS LAKE, MINN.
PENNINGTON, SHAWN B.; CASS LAKE, MINN.
PETERMAN, JAMES D.; BECIDJI, MINN.
PETERSEN ESTATE, LEE F.; WACONIA, MINN.
PETERSON, LISA K. AND STEPHEN G.; HINES, MINN.
PETERSON, HEATHER E.; MOORHEAD, MINN.
PIETRZAK, RICHARD J.; EAST GRAND FORKS, MINN.
PINTAR ESTATE, CORINA K.; DULUTH, MINN.
POLTA ESTATE, THOMAS; SPRING LAKE PARK, MINN.
POTTER, WARREN F. AND VIRGINIA M.; CHISHOLM, MINN.
PREHN, MACHELLE S.; BECIDJI, MINN.
RADEL, DALLAS M.; MINNEAPOLIS, MINN.
RAISCH, HEATHER L.; CASS LAKE, MINN.
RAMP, NANCY J. AND ERICH R.; WALKER, MINN.
RAPP, KRISTA A.; BECIDJI, MINN.
RASTAD ESTATE, LUCILLE; WALKER, MINN.
RED LAKE VFW POST 6889; REDLAKE, MINN.
REDFIELD, WAYNE AND LINDA; BECIDJI, MINN.
REED, JESSICA D.; BECIDJI, MINN.
REGEL, JUDITH J.; COLUMBIA HEIGHTS, MINN.
REMBOLD, STEVEN R. AND BEVERLY; BECIDJI, MINN.
RICH, RODNEY; BECIDJI, MINN.
RICHARDSON, SCOTT D. AND DAWN M.; BECIDJI, MINN.
RICHES, BRIAN M. AND JENNIFER K.; CALLAWAY, MINN.
RIVERA, DANIEL; LEONARD, MINN.
ROBERTS ESTATE, WILMA J.; BECIDJI, MINN.
ROBERTS ESTATE, EDWARD B. AND GLENDA J.; REDLAKE, MINN.
ROBINSON, ANGELA C. AND JAMES R.; BECIDJI, MINN.
ROBINSON ESTATE, EDWARD E.; BECIDJI, MINN.
RODRIGUEZ, LADEEMA M. AND ERNIE P.; BECIDJI, MINN.

ROEDER, JOSEPH; MAPLE GROVE, MINN.
ROMAN ESTATE, WILLIAM L. AND CHERYL R.; BLACKDUCK, MINN.
ROSS, DEBORAH L.; BECIDJI, MINN.
ROTH ESTATE, MYRTLE C.; BLACKDUCK, MINN.
ROULAND, TRACY J.; MICKEL, DON J.; BECIDJI, MINN.
ROY ESTATE, PAULA A.; REDLAKE, MINN.
RUBIN, KRISTINE L.; OSHEA, PATRICK; BRAINERD, MINN.
RUE, ELAINE; SPRINGFIELD, MINN.
RUSHMAN, RONI S.; BLACKDUCK, MINN.
RUTTEN, JAMES B.; OLDERMAN, DAVID; BECIDJI, MINN.
SALMONSON, TERESA L.; THIEF RIVER FALLS, MINN.
SANDER, JAMES A. AND LAURIE A.; BECIDJI, MINN.
SAYERS, FABIAN; REDLAKE, MINN.
SAYERS, SHIRLEY; REDLAKE, MINN.
SAYERS ESTATE, BRENDA L.; REDLAKE, MINN.
SCHIEF JR ESTATE, JOHN H.; MONTROSE, MINN.
SCHILLING, CANDACE AND DARIN J.; BENEDICT, MINN.
SCHMIDT ESTATE, WILLIAM G.; BECIDJI, MINN.
SCHNEIDER ESTATE, LOIS A.; MAPLEWOOD, MINN.
SCHWARTZ, AL A.; SHEVLIN, MINN.
SCHWARZLANDER, SCOTT; BECIDJI, MINN.
SCHWEITZBERGER ESTATE, A. D. AND PATRICIA; MENAUGA, MINN.
SEELYE, TRACI AND CRAIG; DEER RIVER, MINN.
SEIDEL ESTATE, LEROY; SAINT PAUL, MINN.
SEITZ ESTATE, SHARON A.; BECIDJI, MINN.
SENN, CHRISTOPHER AND VICKI; EAST GRAND FORKS, MINN.
SEPELAK, LINDA A. AND GEORGE J.; BECIDJI, MINN.
SHERIDAN, DAROLD J.; ISANTI, MINN.
SHOCKLEY, PENNY Y.; BECIDJI, MINN.
SKINNER, ROBERT A.; BECIDJI, MINN.
SLETWICK ESTATE, CLARENCE R.; BECIDJI, MINN.
SMITH, MICHAELA I.; NORTHOME, MINN.
SMITH, DUSTIN G. AND CHANTELL K.; BECIDJI, MINN.
SMITH, DAVE F. AND KIM I.; BECIDJI, MINN.
SMITH, DANIEL C. AND KATHY M.; BECIDJI, MINN.
SMITH, LISA M.; BECIDJI, MINN.
SMITH, PAMELA; CASS LAKE, MINN.
SMITH, CLYDE; WALKER, MINN.
SMITH, DIANA M.; REDDY, MINN.
SMITH, RUTH SHIRLEY; BLACKDUCK, MINN.
SMITH, GREGORY T. AND GINA M.; WALKER, MINN.
SMITH ESTATE, WILBERT A.; BAXTER, MINN.
SMITH ESTATE, WALTER J. AND ANTOINETTE L.; WOODBURY, MINN.
SMITH ESTATE, ROBERTA J.; PENNINGTON, MINN.
SMITH ESTATE, ARNOLD L.; WALKER, MINN.

SNYDER, SCOTT; ROSEVILLE, MINN.
SOLEY ESTATE, CLARENCE; BECIDJI, MINN.
SONNENBERG, LARRY J.; TENSTRIKE, MINN.
SORENSEN, RUSSELL G.; TENSTRIKE, MINN.
SORENSEN, RICHARD L. AND PHYLLIS E.; TENSTRIKE, MINN.
SOWADA, DOROTHEA P.; STILLWATER, MINN.
SPEARS, RAMONA LEE; PONEMAH, MINN.
STAI, THERAN AND PENNY J.; BLACKDUCK, MINN.
STAPLES, KAREN L.; BECIDJI, MINN.
STARR, DAN J. AND SUE M.; VIRGINIA, MINN.
STATELY, MARLENE; DULUTH, MINN.
STEHLIK, ALICE; WALKER, MINN.
STILLDA, LOREN; PONEMAH, MINN.
STONE ESTATE, CHERYL M.; BECIDJI, MINN.
STRADTMANN, MICHAEL F.; SAINT CLOUD, MINN.
STRANDEMO, JAMES; BECIDJI, MINN.
STRIEBEL, WAYNE A. AND JERLENE S.; WALKER, MINN.
SULLIVAN, JACK W.; SAINT PAUL, MINN.
SWANSON, JEFFREY AND DARLA; WAYZATA, MINN.
SWANSON, TODD; LAPORTE, MINN.
SWANSON, DUANE W. AND DEANNA D.; PINE ISLAND, MINN.
SWANSON ESTATE, EMMY E.; BABBITT, MINN.
SWANSON ESTATE, ROBERT A.; BECIDJI, MINN.
SWANSON ESTATE, GEORGE M.; EDINA, MINN.
TEMPLIN, JIM E.; PARK RAPIDS, MINN.
TEW ESTATE, DONALD; SOLWAY, MINN.
THE BUCKHORN LODGE; MEDFORD, MINN.
THEIS, JOE C.; BECIDJI, MINN.
THISTLE, TERA JEAN; BECIDJI, MINN.
THOMPSON, CAROL L.; REDLAKE, MINN.
THOMPSON, BRET R. AND ANTOINETTE R.; BECIDJI, MINN.
THOMPSON ESTATE, PEGGY A.; CASS LAKE, MINN.
THOMPSON ESTATE, ROBERT P.; BECIDJI, MINN.
THORESON, KATIE A.; BECIDJI, MINN.
THORNE ESTATE, JANET R.; BLOOMINGTON, MINN.
THORSON ESTATE, DORIS M.; BECIDJI, MINN.
TILL ESTATE, DARYL; CASS LAKE, MINN.
TIX, GREG J.; SOLWAY, MINN.
TOIVONEN, DAN L. AND PAT K.; INTERNATIONAL FALLS, MINN.
TOMSON, ERRANE; BECIDJI, MINN.
TORGRIMSON, KENNETH C. AND LINDA L.; SAINT CLOUD, MINN.
TRI, JON P. AND HOLLY R.; BECIDJI, MINN.
TRIPLETT, WILLIAM J.; CASS LAKE, MINN.
TUFTS, GORDON; WALKER, MINN.

TVERSTOL, HAROLD AND TAMMY; BECIDJI, MINN.
TWA, KERRY LYNN; HAZELTON, GARY A.; TURTLE RIVER, MINN.
UP NORTH ARCHERY; SOLWAY, MINN.
URCH, JARED M.; ARLINGTON, MINN.
URSETH, WILLIAM; PRIOR LAKE, MINN.
VAGT, JOSHUA J. AND JENNIFER E.; PIPESTONE, MINN.
VARNEY, JOELEE; BECIDJI, MINN.
VESLEDAHL, TAMMY; SUCHA, JOHN; BECIDJI, MINN.
VIGESAA, HANS C. AND AMY L.; HASTINGS, MINN.
VIKING PIPE SERVICES CO LLC; OLSON, DAVID; BECIDJI, MINN.
WAALEN, MICAH A.; MORRIS, MELISSA A.; DASSEL, MINN.
WALKER ESTATE, DON; WALKER, BONNIE; OWATONNA, MINN.
WALSCH, DAVID H.C.; MOORHEAD, MINN.
WALTER, JAY J. AND DIANNE L.; PARK RAPIDS, MINN.
WEBB, WILLIAM A.; BECIDJI, MINN.
WEISS, NATALIE M.; PONEMAH, MINN.
WELLERMAN, LARKIN AND REBECCA BROWN; DULUTH, MINN.
WELTER, CRAIG; BECIDJI, MINN.
WEPSALA, MICHAEL A.; WALKER, MINN.
WHITE, ORVILLE D.; BECIDJI, MINN.
WHITE, SHANNON R.; CASS LAKE, MINN.
WHITE, RANDALL S. AND AMBER L.; REDLAKE, MINN.
WHITE, PATRICK J.; DURHEIM, MINDY L.; CASS LAKE, MINN.
WHITE ESTATE, RAMONA J.; CASS LAKE, MINN.
WHITING, PAULA L.; DETROIT LAKES, MINN.
WIDMAN ESTATE, FLORIAN E.; CLEARWATER, MINN.
WIDSETH, RICHARD A.; CROOKSTON, MINN.
WIEST, HENRY L.; PUPOSKY, MINN.
WILL, SUSAN E.; GRAND RAPIDS, MINN.
WILLERT ESTATE, HOWARD A. AND KATHRYN A.; BLAINE, MINN.
WILLIAMS, RICHARD E.; BECIDJI, MINN.
WILSON, JACK L. AND SUZANNE M.; ROCHESTER, MINN.
WILTSE, JEFF AND SALLY; BECIDJI, MINN.
WITTNER, MILLESA A.; CASS LAKE, MINN.
WORLEY, SUSAN A. AND SHANE P.; BRAINERD, MINN.
WRIGHT, GREGORY R.; CASS LAKE, MINN.
WRW INC.; ECKSTEIN ESTATE, WAYNE; BECIDJI, MINN.
WYATT, MARY LOU; BROOKLYN PARK, MINN.
YELLOW ESTATE, TOBIAS; REDLAKE, MINN.
ZACHER, JASON AND JAHAIIRA; LAPORTE, MINN.
ZENZIUS, WANDA F.; BECIDJI, MINN.

BUSINESS MEMBER SPOTLIGHT

TIMBERLINE SPORTS-N-CONVENIENCE

Your One-Stop Shop for the Great Outdoors

In 2018, Carl and Deanne Adams took the reins at Timberline Sports-N-Convenience, and along with their dedicated crew, they've been serving the outdoor needs of our community with welcoming smiles and unbeatable selection.

From the moment you walk through their doors, it's clear Timberline is more than just a store. It's a hub for hunters, anglers and outdoor enthusiasts of all stripes. Whether you're looking for quality apparel, the latest in hunting and fishing gear, or even a quick snack from their full convenience section, Carl and crew have built a place that truly has "everything hunting and fishing" – which just so happens to be their motto.

Over the years, they've expanded their offerings to include deer stands, bear bait and even e-bikes, staying ahead

of outdoor trends while staying true to their roots. But their impact doesn't stop at the store. Timberline Sports proudly sponsors local sports teams, community events like the Backwoods Bash and organizations like the Knights of Columbus. It's their way of giving back to the community that supports them.

When asked what makes it all worthwhile, Carl didn't hesitate: it's the people. "Chatting with folks, meeting new faces and helping people find exactly what they need – it's the best part of the job," he shared.

So next time you're gearing up for your next outdoor adventure – or just want to stop in and say hello – make Timberline Sports-N-Convenience your first stop. You'll find more than gear; you'll find community.



As a proud participant in the Co-op Connections Program, Timberline Sports also offers a great perk: **Save 10% on select gun accessories with the purchase of a firearm.**

Timberline Sports-N-Convenience
(Marathon Gas Station)
Highway 71
Blackduck, Minn.



Classifieds

Classified ads rules

- Ads are due by the following dates:
 - **AUGUST ISSUE:** Submit by July 1.
 - **SEPTEMBER ISSUE:** Submit between July 2 and August 6.
- Ads may be submitted via our website at www.beltramelectric.com. (preferred)
- NO real estate, rental, personal or commercial ads will be accepted.
- All ads must be 50 words or less and typed or printed clearly.
- Editor reserves the right to edit or reject any ad.
- Members may only submit one for sale and one wanted or free ad per issue.
- Ads are published at no charge as space permits on a first-received, first-printed basis, **with no guarantee your ad will appear.**
- Ads are only allowed to be repeated for **three consecutive months** and must be resubmitted each month.
- Include name and Beltrami Electric account number on all submissions.

For Sale:

16" saddle with saddle blank and stand. Very comfortable and in great shape. \$340. Will send pictures if requested. 218-444-7532.

16-cu.-ft. chest freezer, \$100. 20" Samsung TV, \$50. Vizio TV-new, \$100. Antique fainting couch light blue/floral pattern \$500. Small truck box \$100. 218-835-8145. Call after 5 p.m. 218-508-1551.

2017 Keystone Cougar X-Lite 21RBS travel trailer. Alum frame walls, steel roof trusses, dual axle, slide-out dinette, TV, CD/DVD system with blue tooth, power awning, 8-cu.-ft. fridge, A/C, shower, toilet, spare tire, weight distribution hitch, and more. 25'-9" over length, good condition, one owner, \$15,000. 612-810-1443.

12-gauge steel shot ammunition. All for 3" chamber. 4 boxes of BB, 2 boxes of 2 shot and 3 boxes of 4 shot, 218-760-7105.

2002 Arctic Cat 4-wheeler. Used locally, no rough trails. Runs well. \$4,500. 218-835-7484.

Good condition! 1996 single-seat flat bottom 14' sage green Carolina Skiff.

Canopy and older utility trailer included. \$1,500/obo. Please call 218-209-5008.

Lawn spreader - excellent condition, \$10. Seventy-seven alphabet wood blocks most from the 1970s, \$10. Beautiful handmade walnut cribbage boards - great gift for the cribbage player in your life, \$35. 218-586-2544.

Misc. scrap iron, various lengths and weights. Want to sell it all at once. Berge-outside wood stove, 15" x 15" door opening. I can text pictures for both upon request. Call for more details. Leave message/number if no answer. 218-586-2962.

Drum sander 20x24 work surface, 37 hi, GE motor 1/3-hp, 1725 RPM 115/230 volt, base 18x18, 2-inch welded square tube. \$40. Bob 218-443-0426.

Champion hand crank forge blower in working order. \$75/obo. 218-444-4327.

Men's golf bag \$20, Vokey SW \$35, TaylorMade driver and 3 wood \$120, 2 Women's club set and bag \$50 each, 2 children's club set and bag \$40 each. 218-308-1227.

Guns! Camo Hi-Point 9mm Carbine w/

soft case, 2x red and green dot scope and 25 round mag. Fun to shoot! \$450. Smith & Wesson SW99 Full size 9mm pistol w/ case. \$500. 218-224-3500.

Clean 5-gal pails, some with lids, \$5. 4-gal square pails, \$3. American Hunter magazine collection: all of 1999 and asst issues from 1994-2000, \$10. Equip your cabin/B&B: Bunn coffee maker (new carafe), \$30; waffle iron, \$10; ice cream maker, frypans, wok, hand mixer w/bowl. 218-586-2884.

Veror 10-inch vertical band saw. Model BS250 new never used, two extra blades. \$240 firm! Call Mike 218-444-4767 (land line no texting).

John Deere 100 series 2 bag grass catcher \$100. Cash. 214-444-7308.

Wood stove, Drolet HT3000. \$500, used about 3 weeks. Today's cost is over \$1,400 new. Located in Pinewood. 218-255-5371.

Greenspeed x3 recumbent trike. Hardly used. Sigma BC 12.22 odometer and storage bag included. \$995/obo. 218-766-1880. Leave message.

Electric heaters (2), undercut saw, steel

snow scoops (2), heavy duty bed frames (2), security locking mailbox still in box, futon with cushion, new hickory cabinet pulls, 14" 6-hole new tire for trailer or camper tire. 218-766-2126.

Wenonah solo canoe, \$600. 218-368-2930.

1998 Artic Cat 4-wheeler with snow plow. Very low miles, like new condition. \$2,800. 218-556-8361.

Wanted:

Looking for a used 3 bedroom mobile home in good condition. Call 218-689-9050.

Cash for military items from WWI, WWII and Vietnam. Flags, helmets, medals, uniforms, etc. 218-371-6259.

Will take free canning jars w/rings, wide mouth preferred but will take regular mouth. Quart and pint size. Call Leslie 218-467-3553, leave message.

Free:

Close to 3 acres of older 4-strand barb/ barbed wire. You cut/haul it, free, T-posts \$2 ea. Near Gene Dillon School. Call Mike 218-759-4734.

BOARD MEETING HIGHLIGHTS

Beltrami Electric's board conducted its regular monthly meeting Wednesday, May 28, 2025. A quorum of directors was in attendance.

The following reports were given at the meeting:

- President and CEO Echternach and the board discussed recent safety successes and observations.
- President and CEO Echternach made his monthly report, including financials, large loads, Red Lake Business Activity Fee, building maintenance, CFC Integrity Fund, interconnections, employee updates and recognitions, net metering and legislative issues affecting the electric industry.
- Arlene Hogquist presented April's financial report.
- The Policy Committee presented the policy report and recommendations.

- Directors and President and CEO Echternach shared highlights of meetings attended on behalf of the cooperative and discussed upcoming meetings, events and education conferences.

The following actions were taken at the meeting:

- Approved the consent agenda.
- Approved policy revisions.
- Appointed Kevin Geerdes as the National Rural Utilities Cooperative Finance Corporation voting delegate with Sue Krigen as the alternate.
- Appointed Murl Nord as the Federated Rural Electric

Insurance Exchange voting delegate with Sue Krigen as the alternate.

- Appointed Kevin Geerdes as the National Cooperative Services Corporation voting delegate with Murl Nord as the alternate.
- Appointed Jared Echternach as the CoBank voting delegate with John Lund as the alternate.
- Approved director and President and CEO expenses.

The next board meeting will be held on Wednesday, July 23, 2025.

JULY READER'S CONTEST

For your chance to be entered in a drawing to **win a \$10 credit** on your bill, correctly answer the questions and include with your payment or mail to: BEC, P.O. Box 488, Bemidji, MN 56619. Or email answers to info@beltramelectric.com with the subject line "Reader's Contest." Be sure to include your name and BEC account number. **Entries must be received by June 25.**

1. Beltrami Electric is celebrating our _____ anniversary this year.
2. The meter base (meter socket) is the responsibility of _____ to maintain.
3. The Touchstone Energy Open golf tournament is a fundraiser for _____.

Member Name:	BEC Account Number:	Phone/Email address:

Congratulations to our May contest winner: Katie & Joshua Norenberg

Happy
4TH OF JULY

Beltrami Electric
will be closed on
Friday, July, 4,
in observance of
Independence Day.

BELTRAMI ELECTRIC WELCOMES JODY BRIDGEFORD



Beltrami Electric Cooperative is pleased to welcome Jody Bridgeford as our newest Member Service Representative, joining the team on May 27, 2025. Jody brings nearly three decades of customer service experience in the energy industry, including 15 years with Lakes Gas Company and 13 years with Naylor Heating & Refrigeration. She also brings valuable experience working with energy assistance programs and local service agencies, making her a strong asset to our member-focused team. A graduate of Bemidji High School, Jody lives in the Turtle River area and is excited to serve members in her home community. Please join us in welcoming Jody to Beltrami Electric!

BELTRAMI ELECTRIC HONORED WITH

At Beltrami Electric Cooperative, keeping our members and employees informed, connected and engaged is a top priority, and we're proud to share that our efforts have recently earned national recognition. Beltrami Electric Cooperative has been recognized with two national **Spotlight on Excellence Awards** from the **National Rural Electric Cooperative Association (NRECA)** and the **Council of Rural Electric Communicators (CREC)** for projects completed in 2024.

The co-op received a **Gold Award** for Best Internal News Publication for its employee newsletter, *The Lighter Side*, and a **Silver Award** for Best Annual or Impact Report for the 2023 Annual Report, featured in the August 2024 issue of Northern Lights.



The Spotlight on Excellence Awards, established in 1987, honor outstanding communication efforts among electric cooperatives nationwide. The awards are highly competitive, with several hundred entries

submitted annually across categories such as writing, graphic design and digital communications. The esteemed judging panel includes faculty from top universities across the nation, as well as noted professionals in the fields of marketing, digital communications and print media.

Both award-winning publications were edited by Angela Lyseng, Beltrami Electric's communications specialist. Beltrami Electric is proud to be recognized for excellence in communication, reflecting its continued commitment to keeping members and employees informed and engaged.

NRECA SPOTLIGHT ON EXCELLENCE AWARDS



Communications Specialist, Angela Lyseng, with the two Spotlight on Excellence Awards.

LYSENG HONORED WITH TOUCHSTONE ENERGY® NATIONAL MEMBER ENGAGEMENT CHAMPION AWARD

Beltrami Electric Cooperative is proud to share that Angela Lyseng, our communications specialist, has been recognized nationally for her outstanding work in engaging with members and promoting cooperative values. Angela received the 2025 Member Engagement Champion Award during NRECA's Connect Conference, an annual event that brings together electric co-op communicators from across the country. The award was presented by Touchstone Energy Executive Director Jana Adams, who described Angela as "a true ambassador of member engagement" who brings innovation, creativity and a deep commitment to the co-op mission in all she does. Angela plays a key role in planning events, managing communications, and finding meaningful ways to keep members informed and connected. Her thoughtful work reflects the heart of Beltrami Electric's mission — to serve and engage with our members and communities. Congratulations, Angela, on this well-earned recognition!



NORTHERN

L I G H T S

JULY 2025 | VOL. 72 | NO. 7

Northern Lights (USPS 016488)

Published monthly by Beltrami Electric Cooperative Inc., 4111 Technology Drive NW, Bemidji, Minnesota 56601-5128. Subscription rate is \$5. Periodicals postage paid at Bemidji, MN 56601.

POSTMASTER: Send address corrections to Beltrami Electric Cooperative Inc., P.O. Box 488, Bemidji, Minnesota 56619-0488.

OFFICERS AND DIRECTORS

Chair John Lund, *DISTRICT 7*

Vice Chair Sue Kringen, *DISTRICT 8*

Secretary Murl Nord, *DISTRICT 1*

Treasurer Sharon Lembke, *DISTRICT 9*

Directors: Charlie Perkins, *DISTRICT 2*; Kevin Geerdes, *DISTRICT 3*; Craig Gaasvig, *DISTRICT 4*; Robert Wallner, *DISTRICT 5*; Rick Coe, *DISTRICT 6*

President and CEO Jared Echternach

Editor Angela Lyseng

Office Hours: 8:00 a.m. – 4:30 p.m.
Monday – Friday

Telephone: 218-444-2540 or
1-800-955-6083

Website: www.beltramielectric.com

Email: info@beltramielectric.com

MN STATE ELECTRICAL INSPECTORS

Any time you or an electrician does wiring or other electrical work at your home or farm, Minnesota state law requires a state wiring inspector to conduct a proper inspection of the work. A rough-in inspection must be made before any wiring is covered. A final inspection is also required. Find service territories for electrical inspectors here: <https://workplace.doli.state.mn.us/jurisdiction/>

BELTRAMI & HUBBARD COUNTIES:

Wade Koons | 218-580-8589
wade.koons@state.mn.us

CASS & HUBBARD COUNTIES:

Tony Kohrs | 218-616-1554
tony.kohrs@state.mn.us

GOPHER STATE ONE CALL

1-800-252-1166 or 811

www.gopherstateonecall.org



Anyone who plans to dig is required by law to notify the state of their intentions at least 48 hours in advance. All digging requires a 48-hour notification so that buried telephone lines, TV cable, pipelines, and utility electric lines can be located to ensure that none will be severed or damaged.

OUR MISSION STATEMENT

To provide excellent value to our members through the safe delivery of reliable electric service, excellent member service and innovative energy solutions at fair and reasonable prices.

This institution is an equal opportunity provider and employer.



Beltrami Electric Cooperative Inc.

® Your Touchstone Energy® Cooperative

Connecting Communities.
Powering Life.



FRIDAY, SEPT. 12, 2025

Castle Highlands Golf Course
13848 Gull Lake Loop Rd NE,
Bemidji, MN

FUNDRAISER FOR THE:

United Way



United Way
of Bemidji Area

TOURNAMENT HIGHLIGHTS

- ◆ 18-hole, 4-person scramble
- ◆ 10 a.m. shotgun start
- ◆ Prizes awarded to top three teams
- ◆ Includes raffle prizes, optional Skins game, 50/50 raffle, closest to the pin, and hole-in-one contests!

PRESENTING SPONSORS:



To register a team or for more information, visit
beltramielectric.com or call 218-444-2540.