


NORTHERN

L I G H T S



**Beltrami Electric
Cooperative Inc.**

Your Touchstone Energy® Partner 

April 2015



Volunteer for Project GreenTouch - Page 8

NORTHERN

L I G H T S

Northern Lights (USPS 016488), Vol. 62, No. 4 is published monthly by Beltrami Electric Cooperative Inc., 4111 Technology Drive N.W., Bemidji, Minnesota 56619-0488. Subscription rate \$5. Periodicals postage paid at Bemidji, MN 56601.

Postmaster: Please send address corrections to Beltrami Electric Cooperative Inc., P.O. Box 488, Bemidji, Minnesota 56619-0488.

Office Hours: 8 a.m. to 4:30 p.m.
Monday – Friday

Customer Service: 218-444-2540
or 1-800-955-6083

www.beltramielectric.com

Board of Directors

| | |
|-----------------|--|
| President | Rick Coe, DISTRICT 6 (Square Butte Director) |
| Vice President | Jeff Nelson, DISTRICT 3 |
| Secretary | Murl Nord, DISTRICT 1 |
| Treasurer | Judy Honer, DISTRICT 9 |
| Directors: | Lea Perkins, DISTRICT 2; Jerry Larson Sr., DISTRICT 4; Robert Wallner, DISTRICT 5; John Lund, DISTRICT 7; Terry Diffley, DISTRICT 8, (Minnkota Director) |
| General Manager | Lynette Nieuwsma |
| Editor | Angela Lyseng |

Minnesota State Electrical Inspectors

Beltrami and Clearwater Counties
Davis Smid

507-227-2772 - mntristate@gmail.com

Cass and Hubbard Counties
Steve Schauland

218-652-2213 or fax 218-333-0451

These are the inspectors covering the area served by Beltrami Electric. They can be reached by phone Monday through Friday between 7 and 8:30 a.m. or by fax or email as indicated.

Gopher State One Call 1-800-252-1166 or 811

Anyone who plans to dig is required by law to notify the state of their intentions at least 48 hours in advance.

All digging requires the 48-hour notification so that buried telephone line, television cable, pipelines, utility electrical lines, municipal water and sewer lines can be located to ensure that none will be severed or damaged.

ON THE COVER: Beltrami Electric Cooperative will be hosting the 16th annual Project GreenTouch at Lake Bemidji State Park on May 2. See the back page for more information.



Across ^{the} MANAGER'S DESK

Lynette Nieuwsma, General Manager

Rates – my favorite topic? NOT even close. However, since rate changes typically go into effect April 1, I thought you might be curious.

Actually I feel quite good about the fact that even though we will be seeing a 5 percent wholesale rate increase from Minnkota Power Cooperative (MPC), it will have little impact on our members' rates.

What can you expect? You will see the net Monthly Access Charge increase by 50 cents. The access charge has been at \$29.50 since 2011 and that isn't going to change this year. However, since that time you have seen a credit being applied, the credit has been reduced by 50 cents each year. Basically, what this means is that \$6 per year is the increase that you will pay for the distribution services the cooperative provides that deliver electricity to your home or business. Put into this perspective, I feel okay with that.

I realize that your bill for your February usage has arrived or will be arriving in your mailboxes about the time you read this. If you are concerned that your bill seems high, remember how brutally cold February was. Despite that cold, your dual-fuel off-peak heating system has only been controlled approximately 60 hours this season, compared to 250 hours last year. So while you are thinking about your heating bills, you will need to remember that while last year at this time you were also paying for very expensive propane to fill your tank, this year you still have a fair amount of propane left that you haven't needed to use.

Back to the topic of rates – what won't you see? You won't see the 5 percent rate increase from MPC, which you typically would have seen reflected in your P.P.A. Therefore, the rate for your energy will remain stable. Two

things took place that are offsetting this increase. First, even though it was cold at times this winter, the peak demand for Beltrami Electric is less than last year. This lower winter peak will help offset our higher demand rate from MPC. You have heard Sam Mason or myself talk about the importance of controlling our demand. This demonstrates the value of our off-peak program. We have seen true value this year as the demand was controlled during the peak. However, the comparatively very little control has kept our off-peak sales optimal.

The second factor which is offsetting an increase is a 2014 revenue deferral. 2014 was the Mother of all Winters (at least that is what my dad used to call those kinds of winters). In any regards, it was the coldest and longest winter I remember in my lifetime. Someone once told me that co-op CEOs have to love cold weather. Well, I'm not sure I would go that far. Admittedly cold weather is good for kWh sales and good for margins. Near year-end 2014, your board of directors made the decision to defer \$500,000 of revenue from 2014 into 2015 to offset some of the upcoming wholesale rate increase. In addition, a separate revenue deferral account will be used at the end of 2015 to help the cooperative meet its financial obligations as needed.

If you are wondering why the additional revenue is needed at MPC, it's being driven by several major projects that have taken place in the past decade. These include continued investments mandated for environmental and plant upgrades at the Milton R. Young Station and construction of a major transmission line. Minnkota Power has invested \$425 million to install and enhance sulfur dioxide scrubbers, nitrogen oxides controls, upgrade the

electrical system to accommodate required changes, and construction of a new stack on Unit 2. All of these enhancements were made to comply with Environmental Protection Agency (EPA) requirements. These enhancements do not include any provisions for addressing any further mandates for environmental legislation related to control of carbon, as being discussed on both a state of Minnesota and federal level. Over the past several years, we have reported the significant costs associated with meeting environmental mandates and we're not done. In addition to the environmental enhancements mentioned, Minnkota Power recently completed construction of a 345-kV transmission line running from the power plants located near Center, N.D., to the members of Minnkota Power where it is distributed and used. The price tag of the 250-mile

high-voltage line totals \$354 million.

I started my column talking about the monthly access charge. This is a part of our rate that is often questioned by our members. Basically, this monthly access charge pays for having electricity available at each connected service, regardless if any energy is being used. This monthly charge assures that each account pays toward covering the fixed expenses that go into making our services available. In addition to the transformer, meter and wire at each service, it covers a portion of the shared infrastructure needs of all members; wire, poles and so much more, to provide reliable electric service.

In 2011 we made a couple significant rate structure changes following a Cost of Service Study. By 2016 it will again be time to have a thorough review of our rates. Doing a rate study falls in line with one of my less favored

management responsibilities. Later this year, we will contract with a professional engineering firm for an unbiased review of our existing rate structure. This study is designed to compare revenue requirements with the cost of providing service to each class of consumer. The results of this study will also help us determine what revenue should be recovered from the fixed cost component of our rate (Access Charge) and what revenue should be covered from the variable costs (kWh charge). With that information in hand, your board will blend science and rate philosophy to determine fair rates to our membership. Believe me – we will have lots of good healthy discussions in the boardroom.

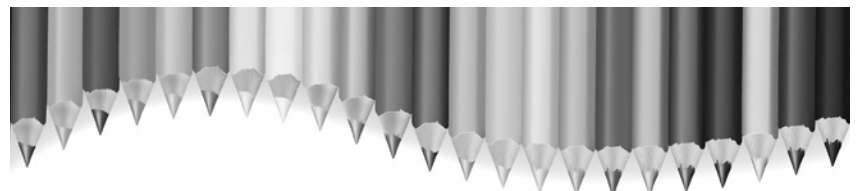
It's always good talking to you, regardless of the topic.

Synette

Beltrami Electric Cooperative scholarship information

Once again, it is time for high school seniors to apply for Beltrami Electric's college scholarships. As we all know, a college education can be expensive. Beltrami Electric and its board of directors are proud to offer \$1,000 in scholarship money to deserving students attending seven area high schools to help with this ever-growing expense.

To be eligible to be awarded scholarship money this spring, parents and/or guardians of the students must be members of Beltrami Electric. Criteria and applications are available at specific high school's career guidance departments. For more information, you can also visit www.beltramielectric.com. The scholarship selection process is handled through the school's designated career guidance offices or scholarship committees. Please contact your high school for more information.



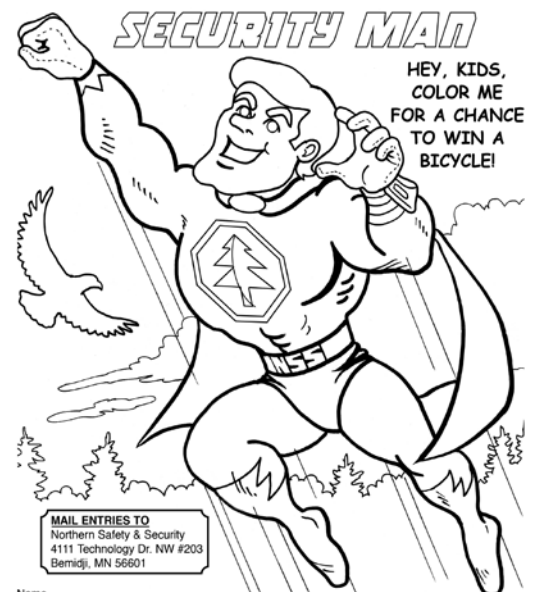
Hey kids!

Color Security Man for a chance to win a new bicycle!

Print out a coloring sheet of Security Man from their website at www.northss.com or pick up a copy in the Beltrami Electric Cooperative lobby. When you are done with your artwork, please mail the sheet to Northern Safety & Security, 4111 Technology Dr. NW #203, Bemidji, MN 56601.

All entries must be postmarked by May 22, 2015

Winners will be announced May 29



MAIL ENTRIES TO
Northern Safety & Security
4111 Technology Dr. NW #203
Bemidji, MN 56601

Name _____
Age _____
Address _____
Phone # _____

Must be 12 or younger to enter –
One winner drawn per cooperative

ENTRY DEADLINE:
must be postmarked by **MAY 22, 2015**
Prize Winners to be announced **MAY 29, 2015**
Please check which cooperative you belong to:

| | |
|---|---|
| <input type="checkbox"/> Beltrami Electric | <input type="checkbox"/> Clearwater-Polk Electric |
| <input type="checkbox"/> Itasca-Maintrap Electric | <input type="checkbox"/> Pied-Banyan Communications |
| <input type="checkbox"/> PKM Electric | <input type="checkbox"/> Red River Valley Electric |
| <input type="checkbox"/> Roseau Electric | <input type="checkbox"/> Wild Rice Electric |

FAQ Access charge



What is the access charge?

The access charge is designed to cover each member's share of the cost for maintenance of poles, wires, transformers, meters, right-of-way and other expenses on the distribution system associated with providing reliable electric service and access to the electrical grid. The access charge is related to the fixed cost of providing service at a location.

Why doesn't BEC charge a higher access fee to those using more power?

Well, that would simply not be fair, as it does not cost any more for the primary line that delivers a lot of energy, than it does for a line that delivers very little energy. More energy on the power line does not wear out the line faster. The only things that wear out a line are weather, soil conditions and time – not kilowatt-hours traveling over the line. The access charge is higher for services that have multiple phases requiring more feeder wires and those with significantly larger transformers, but within a rate class such as residential homes, the fixed cost are very similar even if the usage does vary.

I have been a member for a long time. Shouldn't the monthly fixed costs have been recovered by now?

As a longtime member, there is a good chance that very little of your equipment is the original equipment installed when the service was first energized. Poles and wires break due to storms, transformers blow out, metering equipment changes and capital costs on equipment like bucket trucks rise. Also, the access charge is a lot more than just the equipment in your yard; it is related to the entire system, including substations and more.

Here are a few examples to demonstrate the cost of maintaining a strong distribution system:

- \$75,000 - cost of one mile of single-phase underground line (co-op has 3,437 total miles of line)
- \$1,300 - one 25-kVa transformer (co-op has 3,000 of these transformers installed and more than 16,000 overall)
- \$2,500 - cost to replace a pole, including labor (co-op has 22,000 poles)
- \$150 - average cost of new meter (co-op has more than 28,000 meters deployed)

Your cooperative constantly works to maintain and improve its system so you have the best reliability and service possible. These costs must be spread out among all the members. Your cooperative has less than six members per mile of line whereas urban areas have upwards of 60 consumers or more per mile.

I only use a small amount of electricity; the access charge is unfair.

Whether a member uses one kWh of electricity or 5,000 kWh, your cooperative still incurs the same cost to build the line, maintain the system and deliver energy to you. The co-op's rates are designed to fairly recover costs. Access charges generally should recover most of the fixed costs on the distribution (delivery side) and the kWh should mainly cover the cost of wholesale power. An equitable access charge that covers most distribution costs helps mitigate the unpredictability of weather-related kWh sales.

Energy Efficiency Tip of the Month



A significant amount of the average home energy bill pays for heating water. Take five-minute showers instead of baths and make sure your water heater is set no higher than 120° F.

Source: U.S. Department of Energy

Office closed on Good Friday

The Beltrami Electric Cooperative office will be closed Friday, April 3, in observance of Good Friday. Happy Easter!



**Follow us
on Twitter!**

Click on the "Connect with BEC on Twitter" link at
www.beltramielctric.com



**Check us out
on Facebook!**

Click on the "Connect with BEC on Facebook" link at
www.beltramielctric.com

2015 power plant tours

June 11-12 and Sept. 10-11



Consider signing up for one of the two-day power plant tours offered by Beltrami Electric Cooperative. Tours are scheduled this year for June 11-12 and Sept. 10-11. As a Beltrami Electric member, you can attend one of these trips for only \$40 per person! These tours include motor coach travel, meals, and lodging at the Baymont Inn & Suites in Mandan, N.D., where you will be provided a banquet dinner. The tour, which will stop at various locations in eastern and central North Dakota, includes a visit to Minnkota's offices in Grand Forks and a tour of the lignite-fueled Milton R. Young Station near the town of Center, N.D. The June tour will include a stop at Garrison Dam. The September tour will include a stop at the Ashtabula Wind Energy Center. Members who have not been on this trip are encouraged to go.

Power Plant Tour Registration Form

Names of Participants

Address

Telephone Number _____

June 11-12 _____ Sept. 10-11 _____

Number Attending _____

Number of Rooms 1 _____ 2 _____

MAIL TO: Beltrami Electric Cooperative, PO Box 488, Bemidji, MN 56619-0488

Six smart ways to pay

In addition to all of the listed payment options, traditional bill payment options are still available.



Autopay

Sign up at www.beltramielectric.com



Simple. Easy. Convenient.



Online Banking

Check with your bank



Offered through many financial institutions.



SmartHub

Tablet (SmartHub app)

Cell (SmartHub app)

Computer (Available at www.beltramielectric.com)



Total online account access.



Pay Now

Available at www.beltramielectric.com



One time online payment option.



MoneyGram Bill Pay

www.moneygram.com/billpaylocations



Available at TEALS Market, Walmart stores and CVS pharmacies.



Pay by Phone (24/7)

Pay by Phone (24/7)

218-444-2540 or 855-356-6345



24/7 payment submission.

Northern Lights CLASSIFIEDS

For Sale:

8 hp. John Deere walk behind snow blower. Also, 2 two-stage vertical water pumps for 2-in. wells, 556-6736.

85,000 Btu gas furnace down-draft, ash lumber, tongue and groove, 20' flatbed trailer, wood cook stove, cedar lumber, new upper cupboards, 407-3070.

2000 John Deere tractor GT235, 48" deck, exc. cond, \$1,500/obo, beautiful 17' 6" long wood canoe, handmade, wood strips, poplar and white oak, \$1,700/obo, 243-2589 or 556-8260.

Large round 2nd crop alfalfa hay bales, 751-0408.

Air conditioner, 224-2722.

16-ft. Alumacraft Luner boat, with Spartan trailer and Yamaha Kodiak 400 with extras, 497-0231.

Border collie puppies, born Jan 19, ready to go March 16, asking \$150, 835-6434.

Old upright piano, needs to be tuned, \$150, 751-5730.

Brand new, never been opened, no contract Straight Talk wireless Samsung Galaxy Centura Android-powered phone for only \$29, 444-0225.

Antiques, all in ready to use condition, Duncan Phye table and chairs (6) with 2 leaves/pads, and buffet, arts/crafts oak dresser 2 sm, 2 lg drawers plus cubby hole, federal mahogany dresser with tilting mirror plus more items, call Mary/Bob evenings after 6 p.m., 333-3747.

Delta 12" thickness planer \$230, Wards Power-Kraft 10" table saw \$160, Jointer 6" \$125, 751-0744.

Electronic lift chair, excellent condition, make offer, 556-0680.

Upright piano, good condition \$100, 647-8200.

2001 Pontiac Bonneville, 203K miles, 3.8l v6, avg 28mpg, very clean car, \$2,600/obo, 308-0228.

Master concrete troweling machine 11 hp Honda motor & extra blades \$1,250, T-12 Felling tandem trailer w/ramps \$3,850, 17'-0 Core-craft fiberglass canoe like new \$750, 243-2316.

Two bird cages, very old stamp collection, 547-2157.

Hoover SteamVac LS 3000 (purchased around 2001), works great, does not heat water-uses hot water, all accessories, 2 extra bottles of solution, used maybe a dozen or so times, \$100 firm, 218-243-3029 (Leave msg if no answer).

Beautiful Howard Miller grandfather clock in excellent condition, \$1,050, nice queen size sofa bed in gray and blue, \$300, shred-safe

WM1050XA paper shredder, \$30, 444-2626.

La-Z-Boy reclining couch and love seat, medium brown with flecks of blue, excellent condition, \$950, 556-8507.

9.6V Makita drill and sawzall \$25, round oak table \$25, tan love seat \$30, blue/oak swivel rocker \$10, oak mantel 5 ft \$15, charcoal grills \$10/\$15, Herend figurine \$50, Amager girl figurine \$50, 751-9311/368-9034.

Cabin-style living room furniture with a north woods décor by Marshfield, sofa, rocker, chair with Hassock, end table and glass shadow box coffee table, call 224-3565.

Live ring-neck and mutant pheasants, \$10 each, 586-2839.

Unicover safari topper for 6' pickup box, cost \$1,250, asking \$500, Thermador SS drop-in barbecue grill, \$75, 224-3284.

2009 Ford F150 XLT 2WD burgundy crew cab with 35,000 miles, chrome box rails, running boards, bed liner, hitch and tow package, very clean and excellent condition, one elderly owner, \$18,500 (book is \$19,700) 766-2634.

Browning trap "recoilless" shotgun with custom case, excellent condition, Doug at 224-3288.

MinnKota Terrova 80-pound bow mount trolling motor, excellent condition, 6 x 10 aluminum trailer in good condition, 444-7953.

1973 21' Coachman camper w/title, needs a lot of work, \$500, Dean Vendetta electric guitar \$75, Epiphone acoustic 15-amp \$30, 444-0234.

Fausti over/under shotgun .410 3" F/mold made in Italy, nice condition, single trigger w/ barrel selector, \$750, 444-4509.

'83 Lund Mr Pike 16' with '86 70 hp Johnson, also has MinnKota trolling motor, console, live well, and hummingbird depth finder. \$3,500, John at 766-4082.

Older South Bend metal lathe in excellent mechanical condition, 9-in swing 3 and 4 jaw chucks, faceplate, steady rest, \$1,200, firm, 586-2426.

Homemade square, crazy and star quilts, twin, full, queen, king, portable and cabinet sewing machines, \$15, touch and sew Singer, \$20, refinished oak, 5-drawer high boy dresser, sewing rockers, wash stand, 44x44 dining room table, 6 dining room chairs, matching, other misc chairs, desk chair, 243-2702.

1994 4-wheel popup pickup camper, Alum. frame, light and strong, 3-way frig, furnace, water, lg bed, lights, camper jacks, excellent condition, 444-5757.

New stainless steel boat propeller for Yamaha or Mercury outboard or I/O, 200 hp or larger, 22" pitch, 335-7707 or email ltomp@paulbunyan.net.

Maple sap aluminum bucket, lid and tap, \$6 a set, make your own maple syrup, 766-4829.

Ceramic variety of molds, 224-2314.

Wanted:

Small-wheeled fish house, good tires, 265/75x16, 31/10.5x15, 265/75x15, 209-5413 leave message.

Buttons, scrapbooks, old magazines, 224-2722.

Grandfather clock, 835-6449.

Men's three pin cross country ski boots, size 10 US - 44 Euro size, please contact 779-6618.

Yarn! (An interdenominational ladies group that meets at Trinity Lutheran Church, Laporte, the 1st and 3rd Monday of each month from 1-3 p.m., knit projects that are given to those in need). We donate items to charitable organizations, such as layette sets, lap pads, blankets, sweaters, caps, mittens, scarves, slippers, hand warmers and much more. If you have unused yarn to donate, please call and we will arrange to pick up or meet

you. You may even want to join us. Mary at 333-3747.

Wants for a reasonable price, any 4x4, it needs to be in good condition, 224-2314.

Two-up snowmobile in good condition, low miles, 556-1230.

48" brushmower rear mount PTO or engine driven, 295 International row crop or 71 JD row crop drill or similar to take apart to make a small drill, 289-2610 or 444-7308.

Semi-trailer for storage, with solid weather-tight structure and able to move on its own wheels, tire condition not important but for temporary relocation, please call or txt. 701-660-9104 (no voice mail).

All types of appliances, furnaces/ACs, pianos, computers/laptops, LP bottles, etc., for recycling, picked up free of charge, scrap iron cut/hailed on %, can handle vehicles and heavier equipment also, 712-369-3291.

Classified ads rules

For sale and wanted items only. 50 words or 300 characters, maximum length. No rental, business, service, real estate or personal ads. Ads are published on a first-come, first-serve basis and are free to Beltrami Electric members. Due to space constraints, there is no guarantee your ad will appear. Limited to one "for sale" and one "wanted" ad per issue. Repeat ads are only allowed for three consecutive months. The ad deadline is the first of the month to be included in the next issue. For example, an ad received April 1 would be included in the May issue due out the end of April. An ad received April 2 would be included in the June issue due out the end of May. Ads are preferred to be submitted via the web at www.beltramielc.com or via email at info@beltramielc.com, but may be submitted by mail, phone or in person at the cooperative. All telephone numbers are presumed to have a 218 area code unless otherwise noted.

Save the date!



Beltrami Electric's
75th anniversary
celebration will
be held June
24, 2015, at the
Beltrami Electric
Cooperative
headquarters
in Bemidji.

Co-op board of director nominations accepted at district meetings in May

Nominations will be accepted for director positions at district meetings scheduled in May. Beltrami Electric Cooperative is divided into nine districts, each represented by a director. This year, director positions are open for district 3, 7 and 9. The top two candidates as determined by popular vote will have their names on the general election ballot in June.

Persons eligible to become or remain a director of the cooperative shall be a member in good standing of the cooperative and receiving electric service at the member's primary residence in the district where nominated. If you have any questions regarding qualifications or responsibilities of board members, please contact Beltrami Electric Cooperative CEO Lynette Nieuwsma at 444-2540.

District 3: Thursday, May 7, 7 p.m.

St. John's Church,
27867 Irvine Ave. NE, Nebish, MN

Jeff Nelson is the incumbent.

Townships in Beltrami County: West Alaska, East Alaska, Nebish, Durand, Maple Ridge, Roosevelt, Buzzle, Liberty and Turtle Lake

District 9: Monday, May 11, 7 p.m.

Laporte/Lakeport Firehall,
160 County 39 SW, Laporte, MN

Judy Honer is the incumbent.

Townships in Cass County: Wilkinson (Sections 19 – 36), Otter Tail Peninsula – NW (Sections 19 – 36), Unorganized (T143N R30W), Leech Lake and Shingobee – North

Townships in Hubbard County: Hart Lake (Sections 19 – 36), Lakeport, Hendrickson and Steamboat River.

District 7: Tuesday, May 12, 7 p.m.

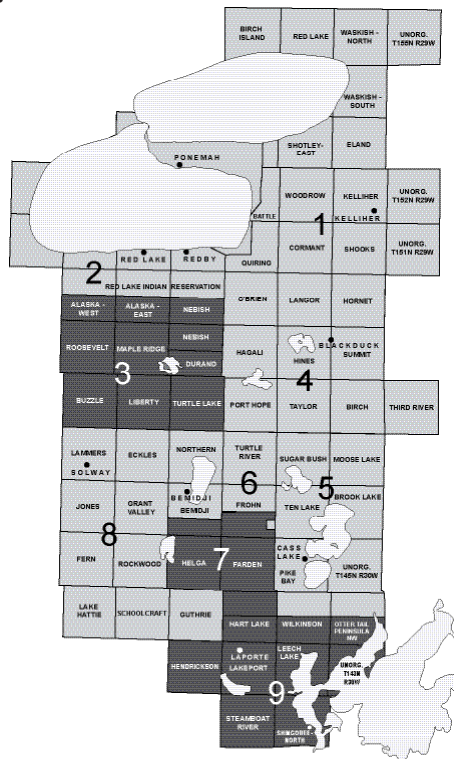
Nary Community Hall, Helga Township,
25895 County Road 9, Bemidji, MN

John Lund is the incumbent.

Townships in Beltrami County: Bemidji (Sections 25 - 36), Frohn (Sections 19 – 36, except 25)

Townships in Hubbard County: Farden, Helga and Hart Lake (Sections 1 – 18)

District meetings are held each year in accordance with your cooperative's bylaws presenting the opportunity to place names on the ballot for director positions. The meetings also serve as a prelude to the upcoming annual meeting/75th anniversary celebration Wednesday, June 24, at the Beltrami Electric Cooperative headquarters.



Beltrami Electric's board of directors conducted its monthly meeting Friday, Feb. 20, 2015. All directors except Jeff Nelson were present. Also present were General Manager Lynette Nieuwsma, Director of Finance and Member Services Sid Sletten and Executive Secretary Kay Olson.

The following reports were given:

- The manager gave her monthly report, including discussion on legislative issues.
- Sid Sletten reviewed the January financial and statistical report, including work order inventories. He also presented revisions to the five-year Revenue Deferral Plan and the 2014 Revenue Deferral Plan. He also reviewed the Capital Credit Allocation worksheet.
- Rich Riewer discussed the ongoing study for a new metering system for the cooperative.
- Arlene Hogquist and Rich Riewer discussed technology uses at the cooperative to improve efficiencies.
- Murl Nord reported on the Cooperative Communications and Public Opinion class he attended.
- The board discussed the Minnesota Rural Electric Association annual meeting and legislative visits. Beltrami Electric was awarded a Safety Accreditation certificate.
- Terry Diffley reported on the last Minnkota board meeting.


The following actions were taken:

- Approved the revisions to the Revenue Deferral Plans.
- Accepted the Capital Credit Allocation Worksheet.
- Nominated Terry Diffley as the Minnkota Power Cooperative director and Rick Coe as the Square Butte director.
- Approved changes to the regular board meeting dates in July and October to July 22, 2015, and Oct. 22, 2015.

The next board meeting will be Mar. 25, 2015, beginning at 9 a.m.



Beltrami Electric Cooperative Inc.

Your Touchstone Energy® Partner 

4111 Technology DR NW
PO Box 488
Bemidji, MN 56619-0488
218-444-2540 • 800-955-6083
www.beltramielctric.com

BELTRAMI ELECTRIC MULTIVENDOR INDOOR GARAGE SALE



to benefit the United Way

\$1 entrance fee (12 & under are free)

Saturday, May 2, 2015

8 a.m. to 2:30 p.m. at Beltrami Electric (in the garage)
4111 Technology Dr NW, Bemidji (near Paul Bunyan Communications)

- Access to 78 booths and the comfort of indoor shopping!
- Huge variety of NEW and USED merchandise!
- All fees (rent, entrance, food) go to the United Way!



Volunteer for Project GreenTouch

Invite your family and friends!

Saturday, May 2, 10 a.m. to 2 p.m., Lake Bemidji State Park
Tools, equipment, beverages and grilled lunch provided

For the 16th year, Beltrami Electric Cooperative and other Touchstone Energy® cooperatives throughout Minnesota have again joined together to spruce up our state parks through a program called GreenTouch.

You're invited to volunteer your time to plant trees, clean up trails, rake leaves and complete other general projects, all to help spruce up Lake Bemidji State Park for the 2015 season!

Come join us! No park sticker will be needed that day for volunteers. For more information visit www.beltramielctric.com or if you would like to volunteer, contact Angela at 444-3689 or alyseng@beltramielctric.com.

