

# NORTHERN

## L I G H T S

November 2017



**Beltrami Electric  
Cooperative Inc.**

© Your Touchstone Energy® Cooperative



## Help us decorate the mitten tree!

*Drop off items at Cooperative Headquarters by Friday, Dec. 8<sup>th</sup>*

With the holiday season approaching fast, it's once again time to decorate Beltrami Electric's annual mitten tree! For the 17<sup>th</sup> consecutive holiday season, we will once again be accepting donations of **NEW AND HOMEMADE** mittens, gloves, hats or scarves for distribution to **children in the area Head Start programs**.

Since the program's inception in 2000, Beltrami Electric has collected and distributed more than 7,000 items to children in our area!

Donations can be delivered to the Beltrami Electric office at 4111 Technology Dr. NW in Bemidji. Donations will be accepted until Friday, Dec. 8, and be distributed very soon after.

*If you'd like to help keep our area children warm and cozy this winter,  
please consider joining BEC in collecting these items.*



# NORTHERN

L I G H T S

Northern Lights (USPS 016488), Vol. 64, No. 11 is published monthly by Beltrami Electric Cooperative Inc., 4111 Technology Drive N.W., Bemidji, Minnesota 56619-0488. Subscription rate \$5. Periodicals postage paid at Bemidji, MN 56601.

**Postmaster:** Please send address corrections to Beltrami Electric Cooperative Inc., P.O. Box 488, Bemidji, Minnesota 56619-0488.

**Office Hours:** 8 a.m. to 4:30 p.m.  
Monday – Friday

**Member Service:** 218-444-2540  
or 1-800-955-6083

[www.beltramielelectric.com](http://www.beltramielelectric.com)

## Board of Directors

President	Rick Coe, DISTRICT 6 (Minnkota Director)
Vice President	John Lund, DISTRICT 7
Secretary	Murl Nord, DISTRICT 1 (Square Butte Director)
Treasurer	Judy Honer, DISTRICT 9
Directors:	Charlie Perkins, DISTRICT 2; Charles Parson, DISTRICT 3; Craig Gaasvig, DISTRICT 4; Robert Wallner, DISTRICT 5; Sue Kringen, DISTRICT 8
CEO	Jared Echternach
Editor	Angela Lyseng

*This institution is an equal opportunity provider and employer.*

## Minnesota State Electrical Inspectors

Beltrami County

Davis Smid

507-227-2772 - [mnrtristate@gmail.com](mailto:mnrtristate@gmail.com)

Cass and Hubbard Counties

Steve Schauland

218-652-2213 or fax 218-333-0451

*These are the inspectors covering the area served by Beltrami Electric. They can be reached by phone Monday through Friday between 7 and 8:30 a.m. or by fax or email as indicated.*

## Gopher State One Call

1-800-252-1166 or 811

[www.gopherstateonecall.org](http://www.gopherstateonecall.org)

Anyone who plans to dig is required by law to notify the state of their intentions at least 48 hours in advance.

All digging requires the 48-hour notification so that buried telephone line, television cable, pipelines, utility electrical lines, municipal water and sewer lines can be located to ensure that none will be severed or damaged.

## STAY CONNECTED!



Like our page on Facebook



Follow us on Twitter



Visit our YouTube channel



## Vote ... It's the cooperative way

Jared Echternach, CEO

The 2016 elections have long faded ... or they should have, but that doesn't mean the voting is over. While the next presidential election won't be upon us until 2020, there are countless state and local elections between now and then which have a major impact on life in our local communities, including rural America. That's why Beltrami Electric Cooperative remains engaged in a national get-out-the-vote campaign called **Co-ops Vote**. We invite you to join us.

**Co-ops Vote** is a non-partisan project of America's Electric Cooperatives designed to encourage co-op members to vote and support their co-ops and their community when they go to the polls. The program does not endorse or recommend candidates for election. **Co-ops Vote** was launched in 2016 to reverse a troubling trend: In the 2012 elections, voter turnout in rural areas declined by 18 percent – twice the voter drop-off seen nationally.

More than 700 electric co-ops in 47 states responded by joining the **Co-ops Vote** program to increase voter

engagement in the communities they serve, and it was a tremendous success. Rural voter turnout in 2016 increased by more than a half-million Americans. Together, we grew our political influence and encouraged lawmakers to pay more attention to the issues affecting rural Americans.

We need to harness this momentum and ensure that **Co-ops Vote** continues to thrive.

There are numerous elections being held this year. Unfortunately, elections are often ignored by the majority of voters. Many people see these “smaller” elections as less important than national elections. In reality, state and local elections have an even greater impact on local communities because the candidates are running on local issues – issues that are closer to voters' everyday lives than many national issues.

Whether you have a local or state election this year or a federal election in 2018, **Co-ops Vote** has a number of activities to help rural Americans stay engaged in the political process. Visit [www.vote.coop](http://www.vote.coop) to join and learn more. Most importantly, make sure you are registered to vote and that you cast your ballot on Election Day – every Election Day.



## MEMBER PRIVACY - RED FLAGS RULE

As many as nine million Americans have their identities stolen each year. As a result of that startling statistic, the Federal Trade Commission has developed a regulation called the “Red Flags Rule.” The Red Flags Rule requires businesses to develop a program to detect, prevent and minimize the damage that could result from identity theft.

The data privacy of our members is important to us, and as a Beltrami Electric member, you may be asked to provide additional information and identification when you make inquiries on your account, such as verifying the last four digits of your social security number.

A member may complete an Authorized Contact Agreement form to allow us to give account information to anyone other than the member. This permits an Authorized Contact to make inquiries on the account to which they are authorized. The Authorized Contact must provide their name, date of birth and the last four digits of their social security number in order to receive account information. While these practices may seem intrusive, please understand that these procedures are in place to protect your member data and prevent the occurrence of identity theft.



# Operation Round Up® awards \$22,634 to community programs



Thanks to the generosity of our members, the Beltrami Electric Cooperative Trust Board for Operation Round Up® recently awarded grants to 26 area nonprofit and community organizations totaling \$22,634. The board had a very difficult task as they received 31 grant requests totaling almost \$50,000 and there was only \$22,634 in funds available. The board was diligent in its review process of all grant applications and there were many worthy projects in the group.

*The following organizations were awarded Operation Round Up grants in October:*

ORGANIZATION	PROGRAM	GRANT
Adult Day Services, Inc.	Nutrition Expansion	\$ 2,000
Belle Thalia Creative Arts Space/Mask & Rose Theater	Earth Keeper Kids- Moving Through Meadows & Woods Musical	\$ 500
Beltrami County Agriculture Association	Operation Inclusive Accessibility 2017	\$ 1,000
Bemidji Community Theater	Sound of Music	\$ 600
Bemidji High School-Special Education	Senior Memory Book	\$ 350
Birchmound Community Center, Inc.	Birchmound Community Center building maintenance	\$ 1,000
Blackduck Area Toys for Kids	Toys for Blackduck Kids-Christmas	\$ 1,000
Cass Lake Area Food Shelf	Emergency Food Assistance	\$ 2,000
Cass Lake Volunteer Rural Fire Association	New Turnout Gear/Boots/SCBAs	\$ 2,000
Forrest E Villier Memorial Park	Solar Lighting for Park Sign	\$ 482
Hubbard County 4-H	Multi-County Ambassador Service Trip	\$ 500
Hubbard County 4-H	Shooting Sports Equipment	\$ 500
Kelliher Public Schools ECFE Program	Full STEAM Ahead for ECFE	\$ 500
Koochiching County Fair Donation Committee	Fair Button Sales-Prizes	\$ 100
Ladies of St. Ann's Catholic Church of Blackduck, MN	Holiday Food Baskets for Needy Families	\$ 720
Laporte School	Readers Workshop	\$ 727
Laporte-Benedict Lions Club	Camp New Hope Retreat	\$ 400
Minnesota Folklore Theater	Sixth Annual Family Holiday Festival	\$ 750
Northern Artist Association/Gallery North	Warm Your Heart with a Little Art	\$ 500
Northome School PTO	Easter Egg Hunt	\$ 500
Northwoods Habitat for Humanity	A Brush With Kindness (ABWK)	\$ 1,000
Red Lake High School	First and On-Time Attendance Incentive	\$ 400
Red Lake Nation College	Digital Storytelling & Preservation	\$ 650
Ruby's Pantry- hosted by Mt. Zion Church	Ruby's Pantry Bemidji	\$ 2,000
Society of St. Vincent de Paul-St. Philip's Conf.	Hope in Bemidji Too	\$ 500
Support Within Reach Sexual Violence Resource Center	Emergency Assistance Funding for Victims of Sexual Violence	\$ 1,000
Voyageurs Area Council-Boy Scouts of America	Support for Boy Scout Program	\$ 955

The Trust Board meets quarterly to review applications for grants and disburse funds. The next quarterly application deadline is **DEC. 31, 2017**. Funding guidelines and grant applications are available at the BEC office or by visiting our website at [www.beltramielc.com](http://www.beltramielc.com).



**Seated:** Gerald Japs, Dwight Powell, Greg Olson, Sue Olson, Jessica Malterud, Walt & Margaret Renskers, *Laporte-Benedict Lions Club*; Bev Larson, *Cass Lake Area Food Shelf*  
**Standing:** Wanda Anderson, *Blackduck Area Toys for Kids*; Sharon Lembke, *Operation Round Up Board Member*; Mary E. Joy, *Blackduck Area Toys for Kids*; Diane McKean, *Ladies of St. Ann's Catholic Church of Blackduck*; Joan Moorhead, *Laporte School*; Brad Olson, *Voyageurs Area Council – Boy Scouts*; Cate Belleveau, *Belle Thalia Creative Arts Space/Mask & Rose Theater*; Ashli Lyseng, *Support Within Reach*; Terri Vail, *Cass Lake Volunteer Rural Fire Assoc.*; Vern Holzhueter, *Beltrami County Agriculture Assoc.*; Geri Hickerson, *Northwoods Habitat for Humanity*; Dennis Montgomery, *Cass Lake Area Food Shelf*; LaVon Weidenborner, *Koochiching County Fair, Northome School PTO*; Kathy Sanders, *Northern Artist Association*; Carolyn Ross, *Cass Lake Area Food Shelf*; Cassy Keyport, *Red Lake Nation College*; Diane Mostad, *Kelliher School ECFE Program*; Lisa Newhouse, *Bemidji High School*; David Lindmark, *Birchmound Community Center*; Ernest Rall, *Bemidji Community Theater*; Fred Rogers, *Minnesota Folklore Theater*; Gary Brooks, Dave Larson, *Ruby's Pantry-Bemidji*; Sue Young, *Society of St. Vincent de Paul-St. Philip's Conf.*; Stacey Sundvall, *Ruby's Pantry-Bemidji*; April Collman, *Adult Day Services*.

*Thank you Beltrami Electric Cooperative members!*



# GENERATOR Safety

Avoid hurting yourself and others – including linemen working to restore power. Understand how to use your generator safely!

Learn about preventing “backfeed” and more at:



## YOUR SOURCE FOR LOCALLY-PRODUCED RENEWABLE SOLAR ENERGY!

Subscriptions still available or select Pay-As-You-Go! Visit our website or contact the cooperative today for more information at 800-955-6083.



**eGauge** View solar production at [www.beltramielc.com](http://www.beltramielc.com)



### Safely connect a portable generator to your home with GenerLink!



- The GenerLink is a 200 amp UL listed automatic transfer switch
- Beltrami Electric Cooperative technicians will install at your electric meter
- GenerLink transfer switch is available in two different sizes (30 or 40 amp models) and comes with a 20-

foot power cord to connect your generator to the meter socket transfer switch

- Allows you flexibility and control to select what you want to run using your home's circuit panel



Contact Beltrami Electric Cooperative today at 444-2540 or 800-955-6083 for current pricing or more information

## DAYLIGHT SAVING TIME

Don't forget to fall back on **November 5!** Set your clocks back by one hour.



## Track your home's energy use with MyMeter



**mymeter**  
 Data home kWh comparison  
**FREE** MyMeter POWER computer  
**Energy-savings** electricity  
 house Daily energy use **MyMeter** comparison energy Reliability  
**Temperature** awareness Beltrami Electric Co-op  
 Neighborhood comparison **awareness** Beltrami Electric Co-op  
**Threshold** kWh Alerts  
 Sign up at [mymeter.beltramielc.com](http://mymeter.beltramielc.com)

# Understanding right-of-way (ROW) clearing

Beltrami Electric has more than 3,467 miles of overhead and underground power lines that are operated and maintained by the cooperative. We are dedicated to providing our members with safe and reliable electric service. Trees growing around power lines can cause electric faults and outages and can create a safety hazard for our crews and the general public. Beltrami Electric has adopted a 3-step right-of-way corridor maintenance cycle in an effort to ensure safer, more reliable electric service.



## What is the right-of-way (ROW) corridor for an electric line?

A right-of-way (ROW) corridor for an electric line is a strip of land that an electric utility uses to construct, maintain, repair or replace an overhead or underground power line. The corridor allows the utility to provide clearance from trees, buildings and other structures that could interfere with the line installation, maintenance and operation. Beltrami Electric Cooperative requires a 30-foot clearance on each side of the poles, and a 15-foot minimum on each side of the poles, when approaching a residence.

## Beltrami Electric's 3-step right-of-way corridor maintenance cycle

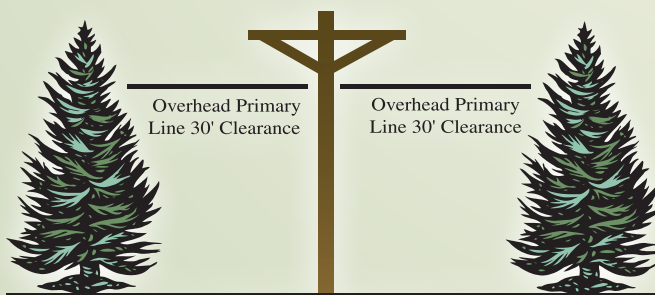
**Step 1:** Trees and brush removed from the corridor.

**Step 2:** Application of an EPA approved herbicide to control re-sprouting of trees and brush during the upcoming mid to late summer season.

**Step 3:** A review of any areas that may have been missed in prior herbicide treatments will follow 1-2 years after step 2. Subsequent maintenance cycles follow in 8-10 year increments, which will be less intensive due to the decreased amount of trees and brush.

**SAFETY** is the number one reason for cutting down trees around power lines. Electricity always seeks a path to the ground. Conductors of electricity include water, your body, tree branches, metal poles and ladders. When you become part of this path, you may be injured or killed.

**SERVICE RELIABILITY**, after safety, is a key responsibility of your electric cooperative; providing members with the best possible power quality. One tree on your property coming into direct contact with power lines not only affects your home, but it affects the power quality for hundreds of your neighbors. Proper clearance today prevents inconvenience tomorrow. Clearing lines reduces blinking lights, power surges and enhances power quality, which protects your electronics and appliances that could cost you thousands of dollars to repair or replace.



Underground Primary Line 10' Clearance

## Why is access to lines important?

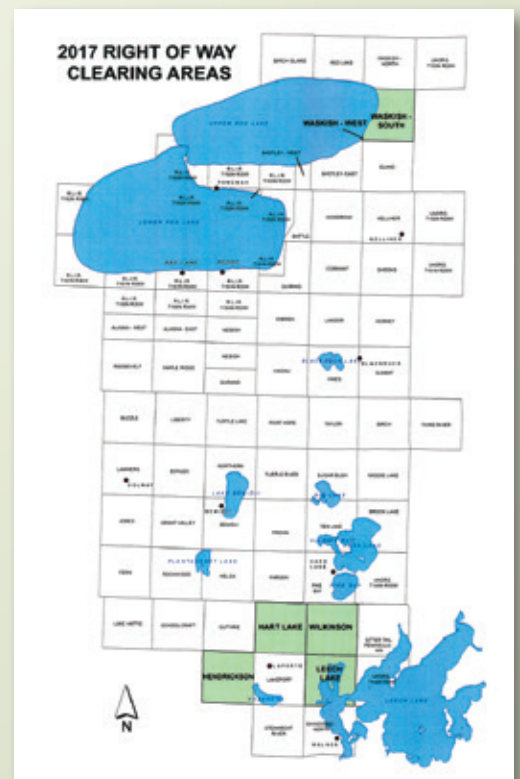
Imagine that a large storm with 80 mph straight-line winds has just swept through our service area, knocking out power to thousands of members. As our crews are dispatched to repair broken poles and downed lines, it's getting dark and conditions are very wet. In order to restore outages in the shortest amount of time, our linemen need to be able to drive our large trucks into the right of way. If there are obstructions such as trees or heavy brush, our crews are delayed in restoring electricity, thus leaving our members in the dark for an extended period of time. Please remember this when considering the reasons why it is important for your cooperative to have an aggressive tree-clearing program. We do it to keep your lights on, with limited interruption.

**Please identify and notify Beltrami Electric Cooperative of possible hazards and/or sensitive items within the overhead corridor. Following are a few common examples:**

- Septic systems should be identified (fenced, signed, etc.) to avoid damage when crews are on-site to clear trees or maintain overhead lines.
- Survey markers that are above-ground, need to be identified to ensure they are not destroyed.
- Wells and water lines.
- Personal property, such as vehicles and trailers, need to be moved from the corridor during the tree-clearing process.

*With your help, we can make sure that our employees have ample access to cooperative lines in case of needed repair. This will help ensure their safety and also make for shorter outage restoration times for our members.*

**Beltrami Electric will be removing trees and brush within the overhead corridor during the upcoming year in the townships highlighted in green.**





# Northern Lights

# CLASSIFIEDS

## Classified ads rules

- Ads are due by the fifth of the month prior to publication of the next issue. Example:
  - o Ads submitted by Nov. 5 – will be published in December issue.
  - o Ads submitted between Nov. 6 and Dec. 5 – will be published in January issue.
- Ads may be submitted via our website at [www.beltramelectric.com](http://www.beltramelectric.com) (preferred).
- Include name and Beltrami Electric account number on all submissions.
- All ads must be 50 words or less and typed or printed clearly.
- Members may only submit one for sale and one wanted or free ad per issue.
- No real estate, rental, personal or commercial ads will be accepted.
- Ads are published at no charge as space permits on a first-received, first-printed basis, with no guarantee your ad will appear.
- Ads are only allowed to be repeated for three consecutive months and must be resubmitted each month.
- Editor reserves the right to edit or reject any ad.
- All telephone numbers are presumed to have a 218 area code unless otherwise noted.

## For Sale:

Toddler bed, mattress, metal antique crib (meets current safety standards), girls 20" bike, turtle sandbox with cover. 444-9137.

Gerbil w/accessories. \$20. Chaparral snowmobile, taking offers. New trolling motor. \$125. 243-3112.

2005 Suburban, new tires, interior good, motor drivetrain good, 250k miles, some rust. \$5,000. 701-213-7363.

Cast iron Timberline wood stove. Large Craftsman table saw, router on stand, drill press and other tools. Very fine condition. 444-2134.

Snowblower for a JD Lawn Tractor 200-216 model, \$150. Call during the day. 751-6667.

Lady Amherst pheasants \$20 each, also Red Golden pheasants \$15 each, all 2017 hatch. Seasoned firewood: Softwood \$25 per pickup load. Hardwood \$50 per pickup load. You haul. 586-2839.

6'x8' portable fish house - \$140. Factory made, heavy black canvas, also great for spearing. New condition, used 3 times. Also men's downhill ski boots size 9-10, Rossignol skis and poles. Good condition, great for beginner. All for \$30. 854-7483 (Becida).

XL Dark Brown "Outback" duster. Worn once and put away. Great buy \$120. 759-4734.

2002 Lincoln Town Car. 76,000 clean; no rust. 751-9543 evenings.

I Black rifle sling. New, was mounted to stock but not used. Leather with mounting eyelets. Sling is 1 inch wide and approximately 3 feet long. It is not padded. Should fit any rifle. \$15. Also, I have a composite stock to give away if anyone can use it. It fits an Interarms Mark X rifle. It does have some damage to the recoil pad. Not sure what caused it but the stock is usable. Not sure if it can be adapted to other versions of the Mauser action rifles. 444-2280.

3-wheel motorized scooter. Go-Go elite in excellent condition, 2 years old. \$550. 751-2776.

8 septic blankets: 6'x25' each. Used for two years and do not need them anymore. Some tears from normal use but are still very functional and have many years of use left in them! \$325 for all or \$45 each. New they are about \$70! 243-3029, leave message.

Four-600x16 Bias Firestone tires with tubes, less than 500 miles \$275, and a radiator that fits a 1948 Ford \$50. 224-3344.

GE refrigerator/freezer, fair condition, runs good, \$50/obo. 224-2633.

Frabill Trekker III portable ice shelter \$150/obo; 2 antique chairs wood with green velvet seats, 1 rocker \$30, 1 straight back \$25; 2 oak chairs with brown vinyl cushions \$10 each; 4 black wooden spindle chairs \$5 each. 766-1167.

Thompson .50 cal. Muzzleloader with 1x scope and accessories, \$250. Remington .280 Model 700 Mountain Rifle with Leupold 3 x 9 Scope, \$600. Franchi (Benelli) 12 gauge over/under shotgun, \$800. 586-2009.

Treadmill, "Weslo Cadence" G 5.9. Very good condition, used very little. Console has thumb heart rate monitor and 10 speed settings with 3 workout levels. Also monitors time, speed and distance walked/ran and calories burned. \$220 firm. Call 444-8032.

Seasoned hardwood firewood for sale 3/4 cord loads. \$100 delivered in the Blackduck to Bemidji area. Call Brian at 340-0226.

Pre-finished solid wood American Walnut 5" x 0.75", 475 sq. feet. New and in box. \$4/sq ft. Call 770-500-5057.

Oak firewood cut and split. \$125 per standard pickup load. You haul. Laporte area. 224-3240.

Brand New "Majestic" 36" Designer Right Corner Direct Vent Fireplace C36R. Never used. 3 x 8" diameter interlocking chimneys (1x18", 2x4"), logs, glass door CGD-36, basket grate RBG42-C. Never used with original screens and instructions etc. 766-3709.

Holistic-registered Red Angus seed stock bulls with superlative EPDs, yearlings, two years, 3 year old. Call for appointment to view and make selections. Improve your herd's quality, efficiency and growth rates! Organically raised beef! Pinewood, Minn., 766-6262.

Cut mixed firewood. \$20 per standard pickup load. You load and haul. Walker, (319) 327-0063.

Servel LP gas refrigerator. Worked great but have electricity now. \$200. Also 225,000 Btu LB White heater \$200. Or make an offer. 612-759-1874.

USPS-American Commemorative Collection. Nature of America Series: #5 Arctic Tundra (2003), #6 Pacific Coral Reef (2004), #7 Northeast Deciduous Forest (2005), #8 Southern Florida Wetland (2006) \$15 each stamp collection. Marvel Comics Superheroes (2007) \$20. DC Comics Superheroes and 1<sup>st</sup> Day of Issue (2006) \$25. Yoda (2007) \$2. 612-618-0422

Bolens snowblower 24" x 24", w/ 8 hp Tecumseh, elec. start, \$99/obo. Tomahawk chipper/shredder w/8 hp B&S electric start engine, \$95/obo. 14 ft. aluminum boat and trailer w/15 hp Evinrude motor, \$595/obo. Galvanized stock tank, 5 1/2 ft. diameter, \$45. obo. 751-8746, leave message.

Canvas fish house 4x8 suitcase style, excellent cond. \$130. Deer stand, hanger \$40. Walkie talkie, Midland. Kerosene heater \$45. Vintage Lowrance Green Box. New in box two room tent. Coleman tent heater. Coleman cookstove. Clean/sturdy kitchen table and chairs, \$85. 224-2394.

1987 Ford F-250 heavy-duty truck with attached 10ft Boss snowplow. Winter ready, runs great, very little rust. \$2,200/obo. Call 368-9913, ask for George. Can be seen at 9693 Peace Ln NW, Bemidji.

Vintage Fiesta dinnerware. Service for 8: cups and saucers, dinner plates, bread and butter plates. Plus six fruit bowls, two nappy bowls, one sauce boat, one utility platter. Excellent condition. 335-2986.

Vermont Castings Vigilant wood stove with accessories, \$800. Frontenac wood stove with fan, \$300. 586-2563.

Electric lift chair \$75, dark brown woodgrain Formica oval dinette set with six chairs on rollers \$100. 586-2509.

Antique wooden rocking cradle, good condition. \$50. 759-2090.

Sofa and matching chair, nice floral pattern \$300, 2 end tables and 1 coffee table solid oak \$200, olive recliner \$75, 2 place table with drawer cabinet \$150 all in excellent condition. 556-2398.

Vexilar FL-18, new, many extras, magnifying lens, battery charge indicator, Vexi Light, box and DVD. 701-317-5011.

Bark Buster PTO wood splitter, \$200, Front-end loader for Ford 9N, 2N, 8N, \$250. 854-7317.

Healthy Swinger, \$70. 751-7947.

Jiffy Legend 8" gas auger, excellent condition, 3 hp, \$225. Dave Genz Voyager Fish Trap, pullover - 3 seater, great condition, \$225. 701-317-5011.

Craftsman top tool chest, 40-inch, 8 drawer, new in box. \$200. MTD 20-inch single stage snowblowers with electric start, \$125. Eskimo ice auger, 8-inch, \$125. 30' power pole, like new, to use for yard light, etc, \$175. Older Singer sewing machine in good shape, \$50. 255-5808.

New freeze alarm- protect home from frozen pipes and water damage, paid \$200, sell for \$55. WORX 24V weed whip with edger, 2 years old, little use, \$75. Will sell following at fair prices: antique porcelain dolls in original boxes, wood-carved musical doll in box, old Barbie dolls w/clothing and accessories. 952-451-6835.

Mixed hardwood firewood, cut and split. Delivered in Bemidji area. \$115 for an 8-ft box pickup load. 224-2613.

'57 Chevy pickup truck, second owner, was ND farm truck, all original, 6 cylinder, 4-speed manual transmission, \$1,000/obo. 8'x14' fish house: hydraulic wheel lift, sleeps 2, carpeted, propane heat, very comfortable, 6 angling holes, 2 spearing holes, back opens for hauling ATV, \$2,500. 766-2008.

2007 Yamaha Grizzly 450 ATV w/winch, \$2,800. 2014 Yamaha Grizzly 550 ATV w/power steering, \$6,000. 2014 Trophy 7x12 aluminum utility trailer w/side & rear ramps, \$2,200. All 3 for \$10,500. 224-2719.

Large Craftsman table saw, \$250. Drill press-bench, \$75. Timberline cast iron wood stove, \$400. GE gas range, \$100. Keurig coffee maker, \$40. All in very nice condition. 444-2134.

RV: 2009 24-ft Gulf Stream Conquest, pull behind with slide out. \$8,000/obo. 751-9279.

Christmas is coming! Why not give a beautiful homemade quilt: 4-5-6-inch block, crazy and star quilts. Twin \$35, Full \$40, Queen \$50, King \$60. Sewing machines, \$15. 243-2702.

Craftsman rider, 20 hp, 46-in w/40-in snowblower, includes chains, rear bagger, good shape. \$785. 751-1009.

## La Voce Ballo

13<sup>th</sup> Annual Fundraiser Rummage Sale

Saturday, Nov. 11, 8 a.m. - 3 p.m.

Evangelical Free Church of Bemidji  
115 Carr Lake Road SW



- \$1 admission at the door
- Lunch may be purchased with proceeds going to LVB program

## Wanted:

Injector pump for Massey-Harris 44D. Crank shaft for Massey-Ferguson hay mower. 243-3112.

16 to 20 hp Briggs engine or similar. 751-9543 evenings.

Galvanized watering troughs. 766-1167.

8-foot sections of older style Shore Station Dock. Any condition is acceptable. Need up to 6 sections. Please call 712-644-2346 or 712-249-0548.

## Free:

Clairel Foot Fixer air massager. 751-7947.

## We are looking for you!

Beltrami Electric is looking for **Thomas B. Dunn** (Bemidji, Minn.) and **Daniel L. Cook** (Redby, Minn.). Please call 218-444-2540 if you have any information.

## Board Meeting Highlights

Beltrami Electric's board of directors conducted its regular monthly meeting Wednesday, Sept. 27, 2017. A quorum of directors was present.

### The following reports were given:

- Representative Matt Bliss visited with the board on various legislative issues.
- Teri Wallis, Regional Vice President of Cooperative Financial Corporation (CFC) gave an update on CFC and discussed the Key Ratio Trend Analysis (KRTA) for the cooperative.
- Chris Kelsey, Information Technology Manager, discussed the results of an external and internal network penetration test at the cooperative and protocols in place to protect cooperative data.
- CEO Echternach made his monthly report, including discussion on the new meter system, legislative issues and recent meetings attended.
- CEO Echternach presented Restated Adoption Agreements of the NRECA Pension Plans as is required by the Internal Revenue Service.
- Sid Sletten gave the Financial and Statistical report for August, including review of work orders.
- Sam Mason reported on Northern Solar and GenerLink.
- Directors shared highlights of meetings attended on behalf of the cooperative and discussed upcoming meetings and educational conferences.

### The following actions were taken:

- Approved the consent agenda and work order inventories.
- Approved the Restated NRECA Pension Plan Adoption Agreements.

The next regular board meeting will be Wednesday, Nov. 29, 2017.

# Co-op Connections

## Business Deal of the Month



**5% off purchase**  
(not valid with other discounts)

1357 Exchange Avenue SE, Bemidji, Minn.  
<http://www.habitatbemidji.org> • 218-444-6398

Northwoods Habitat for Humanity ReStore recycles overstocked, used, discounted and salvageable building materials, appliances and furniture donated by manufacturers, stores, contractors and individuals. These donated items are then resold to the general public to help finance Habitat for Humanity building projects in Beltrami and Clearwater Counties in northern Minnesota.

*The one card that does it all.*



### ATTENTION Dual Fuel Members

If you have a Dual Fuel Heating system, now is the time to be sure your backup heating system is prepared and that you have adequate fuel supply. Remember to check your backup propane or fuel oil tank levels now and periodically during the winter. It is important to always have adequate fuel reserves so your backup heating systems run during times when off-peak electric heating systems are being controlled. Off-peak members can see when they are being controlled three ways:

- 1: Go to [www.beltramielcric.com](http://www.beltramielcric.com) and click on the orange Load Management Status button on our home page
- 2: Call the cooperative at 444-2540 or 800-955-6083
- 3: Check out PBTv channel 301

Members who would like the Load Group and DO numbers for the equipment at their location to reference on the Load Management graph, simply contact the cooperative and we will be happy to help you!



## Problems paying your electric bill?

Energy assistance may be available!

*If you are receiving a low income or suffering from a temporary financial shortfall, the following agencies may be able to assist you with your electric bill. We urge you to contact them immediately to avoid disconnection if you feel you are eligible for aid.*

### Bi-CAP Energy Assistance

6603 Bemidji Ave N  
Bemidji, MN 56601  
218-751-4631

### Mahube Energy Assistance

120 North Central Ave  
Park Rapids, MN 56470  
218-732-7204

### Leech Lake Energy Assistance

115 6<sup>th</sup> St NW, Suite E  
Cass Lake, MN 56633  
218-335-3783

### Red Lake Energy Assistance

PO Box 190  
Red Lake, MN 56671  
218-679-1880

### Kootasca Energy Assistance

201 NW 4<sup>th</sup> St., Suite 130  
Grand Rapids, MN 55744  
218-999-0800

# Celebrate with savings

Buy energy efficient Christmas lights and decorations

## LED Rebate

### How to apply:

1. Purchase LED Christmas plug-in (not battery operated) lights and decorations in 2017.
2. Complete this rebate form and submit it to Beltrami Electric Cooperative by Dec. 31, 2017, with a copy of your sales receipt and the packaging showing the number of lights per string. ENERGY STAR® LEDs recommended.
3. Select appropriate rebate in the box below. Rebate cannot exceed 75 percent of cost. Maximum of 5 strings per customer.



Name \_\_\_\_\_ City/Zip \_\_\_\_\_

Account # \_\_\_\_\_ Phone # \_\_\_\_\_

Address \_\_\_\_\_

Number of Strings	Rebate per String	Total Rebate
Less than 99 lights	\$3	
100-199 lights	\$6	
200-299 lights	\$9	
Greater than 300 lights	\$12	

Mail to: Beltrami Electric Cooperative • P.O. Box 488 • Bemidji, MN 56619-0488

*Our offices will be closed*

**Friday, Nov. 10,**  
*in honor of Veterans Day*

*- and -*

**Thursday, Nov. 23,**  
*as we celebrate Thanksgiving.*



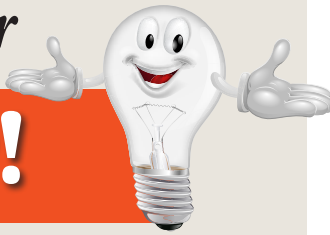


# Beltrami Electric Cooperative Inc.

® Your Touchstone Energy® Cooperative 

4111 Technology DR NW  
PO Box 488  
Bemidji, MN 56619-0488  
218-444-2540 • 800-955-6083  
www.beltramielectric.com

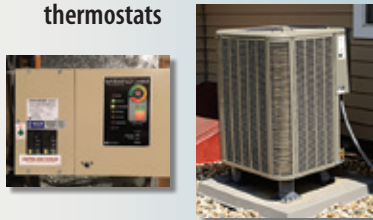
## Get more value for your energy dollar!



Make your home more comfortable and energy efficient with help from the trusted energy advisors at your local electric cooperative or municipal. Great incentives and rebate programs are available to assist you in the purchase and installation of qualifying heating and cooling systems, water heaters, lighting and other appliances. Contact Beltrami Electric Cooperative today to learn more about how you can get the most value out of your energy dollar.

- Air-source heat pumps
- Electric thermal storage heaters
- Electric plenum heaters
- Ground-source heat pumps
- Underfloor electric heating
- Storage water heaters
- Energy Star® refrigerators, freezers
- Energy Star® clothes washers/dryers

- LED light bulbs or fixtures
- Programmable thermostats



**Some restrictions apply. Offers may require inspection and are subject to change at any time.**



# COMING SOON!



**WATTS UP!** is a new and easy way for our members to receive the latest news and information delivered right to your inbox! Learn about available rebates, energy efficiency tips, programs and services, upcoming events and more!

If Beltrami Electric already has an email address on file, you will automatically receive **WATTS UP!** Members may unsubscribe at any time by using the SafeUnsubscribe® link found at the bottom of every email.

## KEEP YOUR CONTACT INFORMATION UP TO DATE

By keeping your contact information up-to-date, you can take full advantage of the services Beltrami Electric Cooperative offers.

Updating your contact information is helpful because it allows the cooperative to contact you regarding your account if there is a need.

Updating your contact information is also helpful because it speeds up the power restoration process. At Beltrami Electric we use the phone numbers you provide to link your service location to our outage management system (OMS). If we have your current contact phone number in our system, our OMS will instantly recognize your phone number and can determine the particular service address from which you are reporting an outage. But remember, this only works if your current phone number (especially your cellphone number) is linked to your electric account.

By having an email address on file, you can also sign up for online account access through SmartHub. There you can sign up for our alerts, bill pay reminders, easily report an outage, view and pay your bill and more!

Your privacy is important to us. We will **NOT** share any provided information with others. Communication in our busy world is changing and we want to know the best ways to let you know about planned outages, upcoming events, programs and rebates and your account. You can contact our office to update your information or update it through our website under **My Account / Update My Account Information**.

