


NORTHERN

L I G H T S

July 2020



**Beltrami Electric
Cooperative Inc.**

Your Touchstone Energy® Cooperative 

Cooperative membership has its benefits

ADVANCING CAPITAL CREDIT REFUNDS TO ALLEVIATE ECONOMIC IMPACT OF COVID-19

Due to the unique stresses being placed on our members because of the COVID-19 situation, Beltrami Electric Cooperative has opted to distribute capital credits earlier than in prior years. Typically, capital credits are retired annually and applied as a credit on members' bill statements in late November or early December (depending on the billing cycle). However, in an effort to help those experiencing hardships as a result of the coronavirus pandemic, Beltrami Electric's board of directors authorized this year's retirement early.

HOW MUCH IS MY REFUND? Refund amounts are based on the amount of energy used during the period retired. Current members will have received a credit on their June bills. You can find your credit amount applied to your billing statement as "Apply Capital Credit Retirement" under the Detail of Charges section. Former members were mailed a check in June.

Capital credits represent your ownership in Beltrami Electric and are one of the most unique and rewarding benefits you enjoy as a member-owner of an electric cooperative.

How do capital credits work?

Because electric co-ops operate at cost, any excess revenues, called net margins, are returned to members in the form of capital credits. Here is how it works:



When you move into a home or establish a business in Beltrami Electric's service territory, you become a member of the cooperative.



Capital credits increase on your account over a period of time and are based on the amount of electricity you use, so your allocation may vary each year.



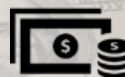
A capital credit account is established in your name and Beltrami Electric uses this account to record your investment in the co-op. Each year, any revenue remaining after expenses have been paid, or net margins, are allocated to your capital credit account. BEC allocates net margins as "capital credits" to members. Notice of this allocation appears on your April or May billing statement, depending on the billing cycle.



Beltrami Electric uses the allocated capital credits as a source of equity to build and maintain its electrical system. This reduces the need for interest-bearing loans, which helps to keep costs down for all members.



Each year, the board of directors carefully evaluates the financial condition of the co-op to determine if we can retire (which means pay) capital credits. There may be years that capital credits are not retired.



YOU, a member-owner of Beltrami Electric Cooperative, receive a capital credit refund!

Northern Lights (USPS 016488), Vol. 67, No. 7

Northern Lights is published monthly by Beltrami Electric Cooperative Inc., 4111 Technology Drive N.W., Bemidji, Minnesota 56619-0488. Subscription rate \$5. Periodicals postage paid at Bemidji, MN 56601.

Postmaster: Please send address corrections to Beltrami Electric Cooperative Inc., P.O. Box 488, Bemidji, Minnesota 56619-0488.

Office Hours: 8 a.m. to 4:30 p.m.
Monday – Friday

Member Service: 218-444-2540
or 1-800-955-6083

www.beltramielectric.com

Board of Directors

Chair	Rick Coe, DISTRICT 6 (Minnkota Director)
Vice Chair	John Lund, DISTRICT 7
Secretary	Murl Nord, DISTRICT 1 (Square Butte Director)
Treasurer	Judy Honer, DISTRICT 9
Directors:	Charlie Perkins, DISTRICT 2; Charles Parson, DISTRICT 3; Craig Gaasvig, DISTRICT 4; Robert Wallner, DISTRICT 5; Sue Kringen, DISTRICT 8
President and CEO	Jared Echternach
Editor	Angela Lyseng

Minnesota State Electrical Inspectors

Beltrami County

Wade Koons

218-255-3011 - wade@koonsinspections.com

Cass and Hubbard Counties

Steve Schauland

218-652-2213 – Fax: 218-333-0451

These are the inspectors covering the area served by Beltrami Electric. They can be reached by phone Monday through Friday between 7 and 8:30 a.m. or by fax or email as indicated.

Gopher State One Call 811
1-800-252-1166 or 811
www.gopherstateonecall.org

Anyone who plans to dig is required by law to notify the state of their intentions at least 48 hours in advance.

All digging requires the 48-hour notification so that buried telephone lines, television cables, pipelines, utility electrical lines, and municipal water and sewer lines can be located to ensure that none will be severed or damaged.

Mission of Beltrami Electric Co-op

To provide excellent value to our members through the safe delivery of reliable electric service, excellent member service and innovative energy solutions at fair and reasonable prices.

This institution is an equal opportunity provider and employer.



Capital credits

Jared Echternach, *President and CEO*

Board authorizes \$1 million capital credit retirement in response to COVID-19

You may have noticed a credit on your bill last month and I am pleased to report that your board of directors authorized a general capital credit retirement of more than \$1 million to members. Credits appeared on the bills members received in June. Checks to former members were also mailed in June.



Each year since 1984, your board of directors has authorized a retirement of capital credits to the membership. Recognizing the hardship many of our members are facing due to the COVID-19 pandemic, the board authorized a retirement in June rather than in December as has been customary. The retirement represents 50% of the remaining co-op allocation from 2019.

As a member of Beltrami Electric Cooperative, you are also an owner. Any margins realized at the end of the year are allocated to the members based on the amount of electricity used. We credit this amount on an annual basis to a patronage allocation account in your name. This allocation is held by the cooperative as equity, which allows us to reduce borrowing costs while maintaining your distribution plant. More than \$25 million has been returned to members in the history of the cooperative.

On pages 4 and 5 you will see a list of former members who have not claimed their capital credits. If you know

the whereabouts of any of these former members, please have them contact the cooperative so we can pay their capital credits.

New employees

Matt Roberts and Chase Todavich have joined our team as apprentice lineworkers. They spent the last few summers in our seasonal apprentice program and we're pleased to bring them on full time. Please join me in welcoming Matt and Chase to our cooperative family.

80th annual meeting

In light of the Beltrami County Agricultural Association postponing the 2020 Beltrami County Fair, Beltrami Electric's board of directors has decided to hold a small official business meeting at its headquarters facility on Wednesday, Aug. 12, 2020, beginning at 5 p.m. We continue to work through the details, but the meeting will likely include only the required business elements with no meal, entertainment or prizes. While we were looking forward to conducting our annual meeting in conjunction with the Beltrami County Fair, we understand and support their decision. Further details will be communicated in the August newsletter, on our website and through social media.

Celebrate America

As we approach Independence Day and I reflect upon our great country, I have to admit this year seems quite different. From pandemic to protests, our nation is experiencing tremendous turmoil. As you gather with family and friends over the Fourth, please keep our nation in your thoughts and prayers, and think of all those who have come before us and defended our freedoms so that we may live in peace and enjoy this great nation.

NRECA Youth Tour update



Beltrami Electric's student delegate to the National Rural Electric Cooperative Association's (NRECA) Electric Cooperative Youth Tour will have to wait one more year to experience the once-in-a-lifetime opportunity. The Electric Cooperative Youth Tour is an all-expense-paid trip to Washington, D.C., and was scheduled this year for June 18-25.

Unfortunately, the educational adventure was canceled due to the COVID-19 pandemic.

As a result of this cancellation, Beltrami Electric Cooperative has extended the opportunity to attend the 2021 Youth Tour to this year's delegate, Josibeth Aguilera. "I am incredibly grateful for the opportunity to participate in the 2021 Youth Tour," said Ms. Aguilera. "I can't wait to go on this adventure to the capital! I believe, without a doubt, that the lessons of leadership, politics and history that I will learn during my trip will help me have a strong future. Many thanks to the amazing people at our local co-op! Without you this couldn't have been possible."

The Youth Tour gives high school students the excitement of traveling, meeting new nationwide friends, learning about America's history and visiting with current federal government leaders from Minnesota. We will keep you posted on Josibeth's trip next year.

Notice of Annual Meeting

The 80th annual meeting of the members of Beltrami Electric Cooperative, Inc. will be held at the **COOPERATIVE HEADQUARTERS** on Wednesday, Aug. 12, 2020 at 5:00 p.m., for the following purposes:

1. To pass upon reports covering the previous fiscal year;
2. To elect three (3) directors of the cooperative in accordance with the Bylaws, one each in Districts 2, 4 and 6, each for a three-year term;
3. To transact such other business as may come before the meeting.

*Murl Nord, Secretary
Beltrami Electric Cooperative, Inc.
Board of Directors – July 1, 2020*

*In order for a member corporation, etc., to participate in business matters, a form must be received by the secretary of Beltrami Electric Cooperative on or before the date of the members' meeting(s). To receive a copy of this form, please contact the co-op at **218-444-2540**.

WELCOME, NEW EMPLOYEES!

Beltrami Electric Cooperative is pleased to announce the addition of two full-time apprentice lineworkers to our operations department.



Matt Roberts, son of Keith and Julie Roberts of Bemidji, recently joined Beltrami Electric in the line department as an apprentice lineworker. Matt is a graduate of Bemidji High School and Minnesota State Community and Technical College in Wadena, Minn., where he completed the electrical lineworker program. He has worked for Legacy Power Line in Wadena as well as working as a seasonal apprentice at Beltrami Electric. Matt enjoys hunting and fishing and resides south of Bemidji with his parents. Welcome, Matt!



Chase Todavich, son of Greg and Cheri Todavich of Bemidji, recently joined Beltrami Electric in the line department as an apprentice lineworker. Chase is a graduate of Bemidji High School and Minnesota State Community and Technical College in Wadena, Minn., where he completed the electrical lineworker program. Chase has worked at Legacy Power Line in Wadena as well as working as a seasonal apprentice at Beltrami Electric. He enjoys hunting and fishing and resides northwest of Bemidji. Welcome, Chase!

BOARD MEETING HIGHLIGHTS

Beltrami Electric's board of directors conducted its regular monthly meeting Wednesday, May 27, 2020. A quorum of directors were in attendance.

The following reports were given:

- President and CEO Echternach made his monthly report, including an update to the cooperative's response to the COVID-19 pandemic, April financials and legislative issues affecting the electric industry.
- Upcoming district meetings and the annual meeting were discussed.
- Arlene Hogquist reviewed the April financial report, the first quarter Balanced Performance Scorecard and the long-range financial forecast for the cooperative.
- President and CEO Echternach presented capital credit retirement options to help mitigate the financial effects some cooperative members may face during the COVID-19 pandemic.
- Chair Coe presented a Resolution as a memorial for former director Frank Zentek who passed away.
- Directors and president and CEO Echternach discussed the annual meeting of the members, upcoming meetings, educational classes and events.

The following actions were taken:

- Approved the consent agenda.
- Approved 2020 general capital credit retirement.
- Adopted Resolution as memorial for former director Frank Zentek.

The next board meeting will be Wednesday, July 29, 2020.

Unclaimed capital credits list

AAKER, RANDY, PACE, FLA.
AASEBY, DOUGLAS H., ROSEAU, MINN.
ABDELKHALEQ, BASSAM, BLACKDUCK, MINN.
ADAMS, RICHARD, DULUTH, MINN.
ADAMS ESTATE, GUY E., PLYMOUTH, MINN.
ADKINS, KEVIN, LAKEVILLE, MINN.
ALLEN, ROGER W.; NANCY J. ALLEN, BEMIDJI, MINN.
ALTRINGER, PAUL C., EAGAN, MINN.
ANDA ESTATE, KENNETH; CINDY E. ANDA, CASS LAKE, MINN.
ANDERSON, DAVID C., EAST GRAND FORKS, MINN.
ANDERSON, THOMAS R., SPRING GROVE, MINN.
ANDERSON, MICHAEL D., CRYSTAL, MINN.
ANDERSON, GARY E., BEMIDJI, MINN.
ANDERSON, SARAH, CROOKSTON, MINN.
ANDERSON, BIRGIT, BEMIDJI, MINN.
ANDERSON, JUDY A., BEMIDJI, MINN.
ANDERSON, MARTIN J., FERGUS FALLS, MINN.
ANDERSON, SCOTT, WALKER, MINN.
ANDERSON ESTATE, PATSY, BEMIDJI, MINN.
ANDERSON ESTATE, DAVID L., NORTHFIELD, MINN.
ANDERSON ESTATE, SARAH L., BEMIDJI, MINN.
ANDREWS, IGNATIUS D., BRICELYN, MINN.
ANONSON, BURTON, ALBERT LEA, MINN.
APPLEBEE, CLARICE E., REDLAKE, MINN.
ARCHER, JOHN, HERMANTOWN, MINN.
ARMBRUST, HARVEY, TRIMONT, MINN.
ASHBY, WILLARD E., BEMIDJI, MINN.
AULT, RUSSELL D.; SUSAN I. AULT, WALKER, MINN.
AUNE, BEN, DULUTH, MINN.
AYDT, DIANE M., LONGVILLE, MINN.
BACKMAN, JOHN, BEMIDJI, MINN.
BACKMAN ESTATE, VANETTA R., WALKER, MINN.
BAHR, ROBIN, BEMIDJI, MINN.
BARSCH ESTATE, RONALD, LONGVILLE, MINN.
BARTON, SANDRA L., BLACKDUCK, MINN.
BEALL, STACY L., BEMIDJI, MINN.
BEARDSLEE, GARY I., PINE RIVER, MINN.
BELL, JAMES T., DULUTH, MINN.
BELMORE, GEORGE C., ELK RIVER, MINN.
BELT ESTATE, VERA, MORTON, MINN.
BENSON, LINDA M., BEMIDJI, MINN.
BENSON ESTATE, JOSEPH, GLENWOOD, MINN.
BERGGREN, CARL R., THIEF RIVER FALLS, MINN.
BERGSTROM, RANDY H., BEMIDJI, MINN.
BEVER, KENT A., ALEXANDRIA, MINN.
BLACKDUCK JAYCEES, BLACKDUCK, MINN.
BLAKELY ESTATE, PHILLIP E., WALKER, MINN.
BLASHILL, RENEE A., WALKER, MINN.
BLOOD, DAVID R.; JACKIE BLOOD, FOLEY, MINN.
BLY, ROBERT, MOOSE LAKE, MINN.
BOVEN, ELEANOR, MINNEAPOLIS, MINN.
BOWSTRING ESTATE, THOMAS, CASS LAKE, MINN.
BRACE ESTATE, DEBRA M., COTTAGE GROVE, MINN.
BROUILLARD ESTATE, MICHAEL J., BEMIDJI, MINN.
BROWN, JANICE M., BEMIDJI, MINN.
BROWN, WARREN M., THIEF RIVER FALLS, MINN.
BROWNE ESTATE, JAKE L., BEMIDJI, MINN.
BRUCE, DEBRA L., REDLAKE, MINN.
BUCHANAN, ROBIN LEACH, ROCHESTER, MINN.
BUCKANAGA ESTATE, CHARLES, PONSFORD, MINN.
BUNDY, WILLIAM E., SAUK RAPIDS, MINN.
BURNETTE, RANDALL E., BEMIDJI, MINN.
BUSH, WILLIAM J., TRAIL, MINN.
BUSH, ELOISE, GONVICK, MINN.
BUTCHER ESTATE, ANTHONY G., CASS LAKE, MINN.
CABLE, RANDY, BEMIDJI, MINN.
CALDWELL, JAMES H., BEMIDJI, MINN.
CALDWELL ESTATE, ETHA, CASS LAKE, MINN.
CALHOON ESTATE, HELEN; COREY CALHOON ESTATE, LAPORTE, MINN.
CARLSON, RICHARD A., BEMIDJI, MINN.
CARLSON, ELIZABETH, WILLMAR, MINN.
CHENG, STEVEN; MARGIE CHENG, BEMIDJI, MINN.
CHILDERS, DANIEL D., SAINT CLOUD, MINN.
CHINOOK VENTURES, BEMIDJI, MINN.
CHRISTENSON, JAMES M.; SHARON C. CHRISTENSON, BADGER, MINN.
CHRISTENSON ESTATE, MAYNARD O., SAINT PAUL, MINN.
CHRISTIE, KATHRYN A., BEMIDJI, MINN.
CIROCCO ESTATE, CAROL J., LINDSTROM, MINN.
CLARK, MAURICE F.; MIKE LALONDE, BEMIDJI, MINN.
CLARK ESTATE, DAVID A.; ANN CLARK, BECIDA, MINN.
CLAUSEN, JAMES; VICTORIA L. CLAUSEN, HINES, MINN.
CLOUD, ALFREDA, PONEMAH, MINN.
CLOUD, ANITA, CASS LAKE, MINN.
CLUFF, DEAN, BLACKDUCK, MINN.
COCHRAN, KEITH L., SHEVLIN, MINN.
COCHRAN FAMILY, BURNSVILLE, MINN.
COMBS, DENNIS A., SAINT CLOUD, MINN.
COMSTOCK ESTATE, DELPHA, THIEF RIVER FALLS, MINN.
CONNER ESTATE, ANNA A., CHAMPLIN, MINN.
CONNOR, JONATHAN, CASS LAKE, MINN.
COOK, WAYNE A.; COLLEEN M. COOK, BAXTER, MINN.
CORNELIUS, MICHAEL L., CASS LAKE, MINN.
CORRIGAN, MICHAEL L., MINNEAPOLIS, MINN.
CRAMER, JESSIE M., BEMIDJI, MINN.
CRAMPTON, SCOTT; TAMMY MOEN, BEMIDJI, MINN.
CRIPPEN, LEE R.; JOYCE I. CRIPPEN, LE CENTER, MINN.
CROW, F. R., BROOKLYN CENTER, MINN.
CRUZ, CARMEN A., REDLAKE, MINN.
CRUZ, CARMIN, CASS LAKE, MINN.
DAHLHIEMER, DUANE, MONTICELLO, MINN.
DAIGLE, LEN, GRAND RAPIDS, MINN.
DAILING, RICHARD C.; CINDY DAILING, WATERTOWN, MINN.
DAUGHERTY ESTATE, DANIEL R., BEMIDJI, MINN.
DAVIS ESTATE, COLLEEN R., REDLAKE, MINN.
DAVIS ESTATE, MAURICE, HACKENSACK, MINN.
DEER COUNTRY INC.; EILEEN LINDSEY, NISSWA, MINN.
DEER RIVER WILD RICE, INC., DEER RIVER, MINN.
DEJESUS, FRANCISCO; ARLENE DEJESUS, SHEVLIN, MINN.
DEJESUS, FRANCISCO, SHEVLIN, MINN.
DELORME, GREGORY R. SR., BURNSVILLE, MINN.
DENICE, JOHN JAMES, JR., HICKSVILLE, N.Y.
DESLAURIES, AMY, BEMIDJI, MINN.
DEUTSCH, JOEL S.; NANCY DEUTSCH, BLACKDUCK, MINN.
DEYOUNG, WALTER, STILLWATER, MINN.
DOMBECK, M. A., BUFFALO, MINN.
DORSHER, DAN, BEMIDJI, MINN.
DOXTATOR, BENJAMIN, MINNEAPOLIS, MINN.
DROWN ESTATE, VIRGINIA L., MINNEAPOLIS, MINN.
DUDLEY, KENT D.; ROCHELLE R DUDLEY, LEONARD, MINN.
DUFF, CLARA S., BEMIDJI, MINN.
DWIGHT HEATING & A/C, INC., WALKER, MINN.
EARLE, ERIC, ROCHESTER, MINN.
ECK, DEBBIE, GONVICK, MINN.
EDWARDS, SCOTT R., GRANITE FALLS, MINN.
EHRICH, JOHN ARLAN, FERGUS FALLS, MINN.
EISCHEID ESTATE, M. JEAN, WALKER, MINN.
ELSNER ESTATE, IMOGENE, MINNEAPOLIS, MINN.
ENGEL, JOEL, HANOVER, MINN.
ENGSTROM, LEROY, COKATO, MINN.
ERICKSON, JEFFREY A.; JEANNETTE ERICKSON, HINES, MINN.
ERICKSON, LYLE R.; RENAE A. ERICKSON, BEMIDJI, MINN.
ERICKSON, LANE, CASS LAKE, MINN.
ERICKSON, TROY A., BEMIDJI, MINN.
EVANS, CHAD; LYNN EVANS, BEMIDJI, MINN.
FABER ESTATE, GERALD ADAMS; JEANNETTE FABER, ORR, MINN.
FAIRBANKS ESTATE, CHARLES S., BEMIDJI, MINN.
FAY ESTATE, NANCY J., CASS LAKE, MINN.
FIERO, JEFF, CASS LAKE, MINN.
FINEDAY, SHERYL, CASS LAKE, MINN.
FINEDAY ESTATE, SHARON A., DULUTH, MINN.
FINGER, RONALD C., SAINT CLOUD, MINN.
FINNEGAN, MICHAEL; PAULETTE FINNEGAN, COOK, MINN.
FISHER ESTATE, HERBERT; JEANNETTE L. FISHER ESTATE, WALKER, MINN.
FLECK, ELWIN O., SAUK RAPIDS, MINN.
FLING, DAVID P., SAINT CLOUD, MINN.
FLINT ESTATE, DAWN J., BEMIDJI, MINN.
FREEMONT, JOSEPH H., PONEMAH, MINN.
FRISHMAN, MARLENE, SOLWAY, MINN.
GARROW ESTATE, ROSELLA, BEMIDJI, MINN.
GARNETT, R. BRUCE, BEMIDJI, MINN.
GELLINGS, JAMES, MAHNOMEN, MINN.
GENDRON, DANIEL J.; SHERRY L. GENDRON, WALKER, MINN.
GEVING ESTATE, ROBERT L., BEMIDJI, MINN.
GIACOMINO, JOANNE P., BRAINERD, MINN.
GOLDEN POND FISHERIES, ERSKINE, MINN.
GOLLY, ELLIOTT W., BEMIDJI, MINN.
GOMBOLD, WILLIAM B., EVELETH, MINN.
GOODBUFFALO, SUSAN, BEMIDJI, MINN.
GOODSKY, LELA, BEMIDJI, MINN.
GOODWIN, KRISTINE M.; MARCUS A. GOODWIN, BEMIDJI, MINN.
GOODWIN ESTATE, KATHERINE, CASS LAKE, MINN.
GOTTFELF ESTATE, HARRY E., WAYZATA, MINN.
GRAVELLE, WANDA, BACKUS, MINN.
GRAVES, JULIE, BEMIDJI, MINN.
GRAVES ESTATE, RHONDA S., DETROIT LAKES, MINN.
GRAYHAWK, LLEWELLYN T., CASS LAKE, MINN.
GREENWOOD, GARY L., MILACA, MINN.
GRONBERG, LLOYD A., MOUND, MINN.
GROSSER, DARCY, WARREN, MINN.
GROSZ, JON D., BEMIDJI, MINN.
GUNTHER, SUSAN, MCINTOSH, MINN.
GUNDERSON, FRED, SAVAGE, MINN.
GUSTAFSON, MICHAEL J., BEMIDJI, MINN.
HAGEN, ROBERT L., CASS LAKE, MINN.
HAGEN, PAMELA A., WILLIAMS, MINN.
HAGEN ESTATE, HANS N., BLACKDUCK, MINN.
HAHN, JOHN A., WALKER, MINN.
HAKANSON, LISA, BEMIDJI, MINN.
HALVORSON, CHAD, BEMIDJI, MINN.
HAMILTON, LAWRENCE, KELLIHER, MINN.
HAMILTON, LAWRENCE W. JR.; DOROTHY J. HAMILTON, KELLIHER, MINN.
HAMMOND ESTATE, RUSSELL; SOLVEIG HAMMOND, FOREST LAKE, MINN.
HANSON, THOMAS R.; PAUL K. HANSON, BEMIDJI, MINN.
HANSON, CARLEEN F., REDLAKE, MINN.
HANSON, RUSSELL C., BEMIDJI, MINN.
HANSON, JERRY L., BEMIDJI, MINN.
HANSON ESTATE, WILLIAM J.; ROSALEE A. HANSON ESTATE, BEMIDJI, MINN.
HARMS, RAFAELA, ROCHESTER, MINN.
HARR, ROSLYN K., BEMIDJI, MINN.
HAWKINSON, TIMOTHY J., MINNEAPOLIS, MINN.
HAYES, JOHN W.; CARALEE J. HAYES, BEMIDJI, MINN.
HAZELTON, CHERYL, HINES, MINN.
HEGLAND SIGN CO., BEMIDJI, MINN.
HEIKKILA ESTATE, ALBERT, BOVEY, MINN.
HEISE, ERICH K., WILLMAR, MINN.
HELM ESTATE, LOIS, RED LAKE FALLS, MINN.
HENDRICKSON, DONALD E., REMER, MINN.
HERRMANN, MICHAEL S., BEMIDJI, MINN.
HETLAND, OREEN P., CROOKSTON, MINN.
HICKEY, LINDA, BEMIDJI, MINN.
HICKS ESTATE, LEON, WEST SAINT PAUL, MINN.
HIGMAN, ELIZABETH J., BAXTER, MINN.
HIMES, THOMAS, BEMIDJI, MINN.
HIRDLER, LEROY W., WALKER, MINN.
HOCKEMEYER, MARVIN G., SAINT PAUL, MINN.
HOFLAND, ANN C., BEMIDJI, MINN.
HOFSTAD, CHRISTOPHER R., BENEDICT, MINN.
HOGAN, CHRIS P., DULUTH, MINN.
HOLMGREN, DARLA, GRAND RAPIDS, MINN.
HOLTZ, PHYLLIS M., LITCHFIELD, MINN.
HORN ESTATE, CHIC, TEQUESTA, FLA.
HOWARD ESTATE, GREG, BLACKDUCK, MINN.
HUDSON, STEVEN, SAINT JAMES, MINN.
HUGHES, JAKE, BEMIDJI, MINN.
HURT, EVELYN, BEMIDJI, MINN.
HUTKOWSKI, TODD, BEMIDJI, MINN.
HUTTO ESTATE, FREDDY L., BLACKDUCK, MINN.
HYATT, SAMUAL, BAUDETTE, MINN.
ICEMAN, DONALD, PONEMAH, MINN.
IMAGES - JOB STRIDE, REDLAKE, MINN.
IPPISCH ESTATE, BETTY, CHAMPLIN, MINN.
ISHAM, FERN M., CASS LAKE, MINN.
JACKSON ESTATE, CAROLE E., MINNEAPOLIS, MINN.
JACKSON ESTATE, RENAE L., GRAND RAPIDS, MINN.
JAKOBSEN, PAUL N., BECIDA, MINN.
JARSKI, MARGARET R., PONEMAH, MINN.
JENSEN, DOROTHY E., SARTELL, MINN.
JOHANNESON, MARYA M., BEMIDJI, MINN.
JOHANSEN, THOMAS F., COOK, MINN.
JOHNSON, NOEL P.; VICKIE C. JOHNSON, BEMIDJI, MINN.
JOHNSON, JANICE, BEMIDJI, MINN.
JOHNSON, DEBBIE L., BEMIDJI, MINN.
JOHNSON, DORIS S., SAINT PAUL, MINN.
JOHNSON, BEN E., OWATONNA, MINN.
JOHNSON, JUDI M., CASS LAKE, MINN.
JOHNSON, MARK S., BEMIDJI, MINN.
JOHNSON, RUTH L., MINNEAPOLIS, MINN.
JOHNSON, THOMAS E., RICHFIELD, MINN.
JOHNSON ESTATE, LARRY W., OAK GROVE, MINN.
JOHNSON ESTATE, HELEN A., PARK RAPIDS, MINN.
JOHNSON ESTATE, LOWELL E., BEMIDJI, MINN.
JOHNSON ESTATE, BRUCE M., CASS LAKE, MINN.
JONES, REX L., WINDOW, MINN.
JONES, WALTER B., BEMIDJI, MINN.
JONES, JEREMY M., CASS LAKE, MINN.
JONES, RUSSELL A., CASS LAKE, MINN.
JONES, EVELYN M., CASS LAKE, MINN.
JONES, WILLIAM E. SR., BEMIDJI, MINN.
JONES ESTATE, GEORGIA J., WINTHROP, MINN.
JORDAN, JON, ROGERS, MINN.
JORGENSEN ESTATE, MARGARET L., BEMIDJI, MINN.
JOURDAN ESTATE, BERNICE, REDDY, MINN.
JOURDAN, JON K., NORTHOME, MINN.
JOURDAN, MAUREN A., BEMIDJI, MINN.
JOY, DONALD G.; MARGARET L. JOY, BEMIDJI, MINN.
JUDD ESTATE, JANICE C., EDEN PRAIRIE, MINN.
JURGENSEN, DEB, BEMIDJI, MINN.
KAAR, GERALD H., GRAND RAPIDS, MINN.
KASTNING ESTATE, FRED E. SR., LAPORTE, MINN.
KAUTTO, PETER K., WADENA, MINN.
KAVANAGH, KENT, BEMIDJI, MINN.
KEELEY, WILLIAM A.; DEB K. KEELEY, BEMIDJI, MINN.
KELTTO ESTATE, DELBERT G., ROCHESTER, MINN.
KENNE, KERRY RAYMOND, DOVER, MINN.
KERANEN, AMY L., BEMIDJI, MINN.
KERBY ESTATE, JANE Z., MINNEAPOLIS, MINN.
KERN, LINDA D., BEMIDJI, MINN.
KESLER, DONALD, MINNEAPOLIS, MINN.
KETOLA, STEVEN D., CLOQUET, MINN.
KIMBRELL, ORIANNA, PONEMAH, MINN.
KING, LORRAINE R., PONEMAH, MINN.
KING, DANIEL, WILLMAR, MINN.
KING, MARI A., BEMIDJI, MINN.
KINGBIRD, JERRY LEE, PONEMAH, MINN.
KINGBIRD, DORIS, BEMIDJI, MINN.
KINGBIRD ESTATE, KATHY; FRED KINGBIRD, BEMIDJI, MINN.
KLANDE, ALICE, SHEVLIN, MINN.
KLASEN, LAUREL A., BEMIDJI, MINN.
KLEVEN ESTATE, LEONARD R., THE VILLAGES, FLA.
KNAEBLE ESTATE, ERLING, BLACKDUCK, MINN.
KNOX, DUWAYNE, BEMIDJI, MINN.
KOEPEK, DONALD S. SR.; MARTHA KOEPEK, SHAKOPEE, MINN.
KOJETIN, WOODROW D., MINNEAPOLIS, MINN.
KRAMER ESTATE, EVELYN B., WILTON, MINN.
KREMER, ROMAN R., SARTELL, MINN.
KROEZE, GARY A., LAPORTE, MINN.
KROOK, LYNN F., DEER RIVER, MINN.
LABS, DENNIS H., SHEVLIN, MINN.
LAGRAVE ESTATE, FRANK W., BEMIDJI, MINN.
LAKE, MARY P., MINNEAPOLIS, MINN.
LANGFORD, THOMAS, PARK RAPIDS, MINN.
LARSON, ROBERT J.; KATHY LARSON, BEMIDJI, MINN.
LARSON, BRIAN E., BACKUS, MINN.
LATARTE, JOHN D.; KATHY LATARTE, BLACKDUCK, MINN.
LATTERNER, RICHARD R.; CAROLINE J. LATTERNER, MINNEAPOLIS, MINN.
LAWRENCE, JOHN R.; JEAN LAWRENCE, LAKE GEORGE, MINN.
LAWRENCE, BENITA R., WHITE EARTH, MINN.
LEE ESTATE, JOSEPHINE L., CASS LAKE, MINN.
LIEN ESTATE, LILEY, BEMIDJI, MINN.
LIESTMAN, ALLEN R.; DANA L. LIESTMAN, HAMBURG, MINN.
LIEVSAY, DIANE M., NORTHOME, MINN.
LILLEMO, RICHARD; TANYA LILLEMO, BEMIDJI, MINN.
LINDAHL, DORIS M.; T. SCHLINK, LAPORTE, MINN.
LINDAHL, JANELL E., FREEPORT, MINN.
LITZAU, MURIEL, CASS LAKE, MINN.
LODMELL ESTATE, JOHN L., NORTHFIELD, MINN.
LORINO, JOHN T., BEMIDJI, MINN.
LUCAS ESTATE, VIVIAN, INVER GROVE, MINN.
LUEKEN, KEN L.; JUDY L. LUEKEN, CASS LAKE, MINN.
LUEKEN, JUDY L., BEMIDJI, MINN.
LUSSIER, ROBERT T., REDLAKE, MINN.
LUSSIER ESTATE, DONALD B., BEMIDJI, MINN.
LUSSO ESTATE, LONNA M., SAINT CLOUD, MINN.

These former members may contact Beltrami Electric Cooperative by calling the office at 218-444-2540 or 1-800-955-6083 or via email at info@beltramielectric.com.

LUTSEY, MARK, EDINA, MINN.
LYLE WILKENS INC., CROOKSTON, MINN.
LYONS, FRANCIS J.; HEIDI J. LYONS, CASS LAKE, MINN.
LYONS, MARILYN R., BEMIDJI, MINN.
M O CHRISTENSON INC., WALKER, MINN.
MABEY, M. JONAS, BEMIDJI, MINN.
MADSEN, RENE D., SHEVLIN, MINN.
MANGIN, JOSEPH, SAINT PAUL, MINN.
MANNING, TAMMY, BEMIDJI, MINN.
MARIZ, PATRICIA A., KERRICK, MINN.
MARTIN ESTATE, THERESA L., REDLAKE, MINN.
MASCHING, RONALD P., AKELEY, MINN.
MASON, GARY J., BEMIDJI, MINN.
MASON, MARK, BIG LAKE, MINN.
MATTHEW, DEAN L., SHEVLIN, MINN.
MATTHEWS, MATT R., BLACKDUCK, MINN.
MATTHEWS, MELINDA M., CASS LAKE, MINN.
MATTSON, CRYSTAL D.; CHRIS D. MATTSON, TOWER, MINN.
MAVISON, GARY, BEMIDJI, MINN.
MAY, KENNETH J., SAUK RAPIDS, MINN.
MCCARTHY, MAUREEN, MINNEAPOLIS, MINN.
MCCORMICK, JOHN M.; HEIDI MCCORMICK, MINNEAPOLIS, MINN.
MCGRAW ESTATE, GAIL, REDDY, MINN.
MCKAY, MARK P.; DEBRA M. MCKAY, BEMIDJI, MINN.
MCKAY, MARK P., HIBBING, MINN.
MCKENNA, BRIAN T., BEMIDJI, MINN.
MCKENNA, KIM R., BEMIDJI, MINN.
MCKENNETT, RODNEY, CASS LAKE, MINN.
MCKENZIE, DIANE, MINNEAPOLIS, MINN.
MCPHAIL, JEAN, OCALA, FLA.
MCPHEE, AMY, LEONARD, MINN.
MEADER, NICK, SHEVLIN, MINN.
MEREDITH, CHARLES B., PUPOSKY, MINN.
MERRILL, MELVIN R.; KATHY L. MERRILL, BEMIDJI, MINN.
MESNA, RICHARD E., OSAKIS, MINN.
MEYER, DAVID L., CASS LAKE, MINN.
MILLER, SHANNON; TIM MILLER, BEMIDJI, MINN.
MILLER, LAWRENCE E., BLACKDUCK, MINN.
MILLER, THEARSA, BEMIDJI, MINN.
MILLER ESTATE, WILLIAM M., WALKER, MINN.
MILLSAPS, DAVID L., WALKER, MINN.
MISTIC ESTATE, KATHERINE B., PUPOSKY, MINN.
MITCHELL ESTATE, ROSALIE R., BEMIDJI, MINN.
MOBERG, KARIN M., THIEF RIVER FALLS, MINN.
MOE, KEVIN A., BEMIDJI, MINN.
MONSON, MICHAEL A., ALEXANDRIA, MINN.
MONSON, STEVE R., ROCHESTER, MINN.
MOONEY, KAREN M., BEMIDJI, MINN.
MOONEY, KAREN, BEMIDJI, MINN.
MOORE ESTATE, SALLY G., EDINA, MINN.
MORGAN, MARY G., BEMIDJI, MINN.
MORGAN, JOHN P., CASS LAKE, MINN.
MORGAN, CHRISTINA MARIE, CASS LAKE, MINN.
MORNINGSTAR, KATE, BEMIDJI, MINN.
MORRISSEY, ALEX K.; KEVIN M. MORRISSEY, ROCHESTER, MINN.
MORROW ESTATE, MARILYN A., CASS LAKE, MINN.
MORTENSON, CARL, SAINT LOUIS PARK, MINN.
MOUNTAIN, CARSON LEE SR., DULUTH, MINN.
MUELLER, KEITH L., NEVIS, MINN.
MULLETT, KEITH R., MINNEAPOLIS, MINN.
MURRAY, CONNIE, BEMIDJI, MINN.
NEADEAU ESTATE, ALVIN, REDDY, MINN.
NEADEAU ESTATE, MARGARET A., MINNEAPOLIS, MINN.
NEADEAU ESTATE, MYRON D., REDLAKE, MINN.
NEELAND, BRADFORD C., BAGLEY, MINN.
NEESE JR., GARY, BEMIDJI, MINN.
NELSON, JOHN; LARRY HANSON, MCINTOSH, MINN.
NELSON, TYLER R., BEMIDJI, MINN.
NELSON, JOHN, BEMIDJI, MINN.
NELSON, WANDA L., BEMIDJI, MINN.
NELSON, KENNETH W., BEMIDJI, MINN.
NELSON, JUDITH M., CASS LAKE, MINN.
NELSON ESTATE, DONALD C. G., BEMIDJI, MINN.
NELSON ESTATE, ANGELA S., MINNEAPOLIS, MINN.
NERUD, ELAINE M., WALKER, MINN.
NEVALAINEN, SCOTT, BEMIDJI, MINN.
NICHOL, TODD, NORTHFIELD, MINN.
NIEMANN ESTATE, DAVID, EAST GRAND FORKS, MINN.
NIGHTINGALE, DIANE M., BEMIDJI, MINN.
NOETZELMAN, WARREN, BEMIDJI, MINN.
NOLDEN ESTATE, ELMIRE M., NORTH BRANCH, MINN.
NORMAN, KEVIN S., BEMIDJI, MINN.
NSH NORTH, BEMIDJI, MINN.
NUSTVOLD, BARBARA A., WALKER, MINN.
NUTT, SARAH M., BEMIDJI, MINN.
NYLAND, MACHEL R., CIRCLE PINES, MINN.
OAKGROVE, LOIS, REDDY, MINN.
OBRIEN, JOSEPH J., ATKIN, MINN.
ODEGAARD, DOUGLAS M., BEMIDJI, MINN.
OHOTTO ESTATE, LILLIE M., CAMBRIDGE, MINN.
OKERMAN ESTATE, WILLIAM, BEMIDJI, MINN.
OLSHIN, DAVID, SAINT PAUL, MINN.
OLSON, TERRY; CONNIE OLSON, BLACKDUCK, MINN.
OLSON, MARVIN E.; NANCY F. OLSON, ISANTI, MINN.
OLSON, DENELL, BEMIDJI, MINN.
OLSON, HENRY N., PLYMOUTH, MINN.
OLSON, REBECCA L., SARTELL, MINN.
OLSON, TROY H., BEMIDJI, MINN.
OMBERG, LANCE A.; CHERYL M. OMBERG, BRAINERD, MINN.
OTTERKILL ESTATE, NORMAN D., BAGLEY, MINN.
OTTERNESS, ORRICK C., NORTH BRANCH, MINN.
OVERBEEK ESTATE, JEANETTE, BEMIDJI, MINN.
PALMER, ROBERTA, BEMIDJI, MINN.
PANKOW, DONALD, PONEMAH, MINN.
PAQUETTE, MARY, MINNEAPOLIS, MINN.
PARKER, EILEEN C., SAINT CLOUD, MINN.
PATCH, PHILIP, BEMIDJI, MINN.
PAULLUS, JOE; BELLE M. PAULLUS, BEMIDJI, MINN.
PEACOCK, THOMAS D., CASS LAKE, MINN.
PEASLEY, JESS E., BEMIDJI, MINN.
PEDERSON, RONALD H., BEMIDJI, MINN.
PEDERSON, PATRICIA A.; LAKE GEORGE, MINN.
PEMBERTON ESTATE, JOHN C., CASS LAKE, MINN.
PEOPLES NATURAL GAS, BEMIDJI, MINN.
PEPWRORTH, ERNA B., WALKER, MINN.
PETERSEN ESTATE, LEE F., WACONIA, MINN.
PETERSON, JACKIE A., HINES, MINN.
PETERSON, JAMES E., BEMIDJI, MINN.
PETITE, MARA, CASS LAKE, MINN.
PIERCE, MARIE M., BEMIDJI, MINN.
POLLEX, DEBBIE, BLACKDUCK, MINN.
PORT, THOMAS G., BEMIDJI, MINN.
POWDERFINGER SPORT SHOP; RANDY PREMO, BEMIDJI, MINN.
PURE WATER AQUACULTURE, GARFIELD, MINN.
QUADERER, BRANDYCE, BEMIDJI, MINN.
QUINT, JILL, SAINT CLOUD, MINN.
RADTKE, LOREN H., STURGEON LAKE, MINN.
RAINEY, CAROL J., CASS LAKE, MINN.
RAYGOR, DAVID G.; THERESA L. RAYGOR, ROCHESTER, MINN.
RAYGOR, THERESA, BEMIDJI, MINN.
REICHERT, DONN; LOREN REICHERT, BOWSTRING, MINN.
REINESCH, THOMAS W., BEMIDJI, MINN.
REYNOLDS, WARREN D. JR., BEMIDJI, MINN.
RICE, KELLY, BEMIDJI, MINN.
RITTMILLER, CAROLYN, BEMIDJI, MINN.
ROBERTS, DAVID W., BEMIDJI, MINN.
ROBERTS ESTATE, EDWARD B.; GLENDA J. ROBERTS, REDLAKE, MINN.
ROBERTSON, STEVE S., BEMIDJI, MINN.
ROBINSON, DENNIS D., SAUK RAPIDS, MINN.
ROTH ESTATE, MYRTLE C., BLACKDUCK, MINN.
ROWLEY, SHARON, PUPOSKY, MINN.
ROY ESTATE, PAUL A., REDLAKE, MINN.
RUBIN, KRISTINE L.; PATRICK OSHEA, BRAINERD, MINN.
RYNDERS, COLLEEN, BEMIDJI, MINN.
SABIN, ROBERT O., SAINT PETERSBURG, FLA.
SAMPSON, MAE M., WADENA, MINN.
SAUVE, CLARENCE R., WALKER, MINN.
SAZESH, JULIE, LENGBY, MINN.
SCHARRER, MICHAEL, DETROIT LAKES, MINN.
SCHLATTMANN, BRIAN W., CASS LAKE, MINN.
SCHLEMPER, MICHAEL, BEMIDJI, MINN.
SCHMICKLE, PEGGY, BEMIDJI, MINN.
SCHMID, TIMOTHY J.; LORA L. SCHMID, BLOOMINGTON, MINN.
SCHMIDT, RODNEY A., PLYMOUTH, MINN.
SCHMIDT ESTATE, ROBERT A., WALKER, MINN.
SCHNEIDER, LOIS A., MAPLEWOOD, MINN.
SCHOFF, TRISHA K., BEMIDJI, MINN.
SCHROEDER, DANE; DEANNA L. SCHROEDER, SOLWAY, MINN.
SCHULITZ, JOHN, MINNETONKA, MINN.
SCHULTZ, HERBERT L., AUSTIN, MINN.
SCHULTZ, JOHN J., WAUBUN, MINN.
SCHWARTZ, EUGENE O., BAGLEY, MINN.
SCHWEGEL, TERRANCE J., WILLIAMS, MINN.
SCOTT ESTATE, WALTER R., BEMIDJI, MINN.
SEELYE, TRACI; CRAIG SEELYE, DEER RIVER, MINN.
SEELYE ESTATE, BONITA, CASS LAKE, MINN.
SEENEY SR., HOWARD W., BLACKDUCK, MINN.
SEIDEL ESTATE, LEROY, SAINT PAUL, MINN.
SEIFERT, JOAN M., LITTLE FALLS, MINN.
SETTERHOLM, DAVID, CHASKA, MINN.
SHANAHAN, DARRELL C.; GLORIA SHANAHAN MILACA, MINN.
SIMPKINS, MICHAEL E., CHAMPLIN, MINN.
SISSON, TODD J., BAGLEY, MINN.
SKERSICK, VERLYN; ARLENE SKERSICK, BEMIDJI, MINN.
SKUNES, RON W., CASS LAKE, MINN.
SLONE ESTATE, CATHY, BEMIDJI, MINN.
SMITH, TROY W.; KIM MARTINSON, WALKER, MINN.
SMITH, KAREN S., REDLAKE, MINN.
SMITH, MARJORIE G., REDLAKE, MINN.
SMITH, DEBORAH, BEMIDJI, MINN.
SMITH, DANA B., NEW ULM, MINN.
SMITH, WILBERT A., BAXTER, MINN.
SMITH, CAROLYN D., BEMIDJI, MINN.
SMITH, ANITA S., BEMIDJI, MINN.
SMITH, LISA M., BEMIDJI, MINN.
SMITH, SHIRLEY MAE, SOUTH ST PAUL, MINN.
SMITH, GARY L., BEMIDJI, MINN.
SMITH, LOUISE, NEVIS, MINN.
SMITH, FRANCIS D., SHOREVIEW, MINN.
SMITH, CLYDE, WALKER, MINN.
SMITH, LARRY G., ANOKA, MINN.
SMITH ESTATE, WALTER J., ANTOINETTE L. SMITH, WOODBURY, MINN.
SMITH ESTATE, LUMAR D., G. MINN.
SOWADA, ERNEST, STILLWATER, MINN.
SPITZER, BARRY D., PLYMOUTH, MINN.
STAGER, KINGSLEY, MINNEAPOLIS, MINN.
STANGEL ESTATE, JERRY A., BENA, MINN.
STATE OF MINNESOTA, A ROGNLIEN DAY USE AREA, BEMIDJI, MINN.
STEINER, LLOYD, DULUTH, MINN.
STEINER, MARK, WALKER, MINN.
STENSLAND ESTATE, KEVIN, CASS LAKE, MINN.
STEPHANI, WILLIAM P., PUPOSKY, MINN.
STEPHENS, BARRY K.; REENA STEPHENS, BEMIDJI, MINN.
STEWART, RITA C., BLACKDUCK, MINN.
STILLDAY, LOREN, PONEMAH, MINN.
STILLDAY ESTATE, PAUL R., REDLAKE, MINN.
STOMBERG, CAREN J., BIG LAKE, MINN.
STONE, KATHY C., CASS LAKE, MINN.
STOREY, MICHAEL, BEMIDJI, MINN.
STROMBERG, WILLARD, THIEF RIVER FALLS, MINN.
SULLIVAN, JACK W., SAINT PAUL, MINN.
SULLIVAN, MARY B., BEMIDJI, MINN.
SUOMALA, JEFF, BEMIDJI, MINN.
SWAFFORD, ROBERT H.; REBECCA SWAFFORD, BEMIDJI, MINN.
SWANSON, JOHN C., NAPLES, FLA.
SWANSON, GEORGE M., EDINA, MINN.
SWANSON, CHERYL A., BLACKDUCK, MINN.
SWANSON, HEIDI L., BEMIDJI, MINN.
SWANSON, LEONARD R., FERTILE, MINN.
SWANSON ESTATE, ARTHUR B.; DONNA L. SWANSON ESTATE, BEMIDJI, MINN.
SWEDBURG, BRIAN; JULIE SWEDBURG, DULUTH, MINN.
SWEENEY, JOHN J., SAINT PAUL, MINN.
SWEETIES BEAR DEN; GARY R. JOHNSON, GRASSTON, MINN.
SWIGGUM, MARVIN H., LAPORTE, MINN.
SWINEHART ESTATE, RODNEY A., SQUAW LAKE, MINN.
TAYLOR, DENE ALICE, WALKER, MINN.
TEPLY, TAMMY J., BEMIDJI, MINN.
TEW ESTATE, DONALD, SOLWAY, MINN.
THEIS, ARTHUR E.; E. I. THEIS, ROGERS, MINN.
THEIS, JOE C., BEMIDJI, MINN.
THOMAS, ROGER, BEMIDJI, MINN.
THOMPSON, HENRY L., REDLAKE, MINN.
THOMPSON, FRANK R., PARK RAPIDS, MINN.
THOMPSON, ROBERT E., BAGLEY, MINN.
THOMPSON ESTATE, CHAD A., DETROIT LAKES, MINN.
THOMSON ESTATE, ROBERT P., BEMIDJI, MINN.
THORNE ESTATE, JANET R., BLOOMINGTON, MINN.
THORSON, MARK T.; SEAL COAT SERVICE, BEMIDJI, MINN.
THORSON, GERALD, BEMIDJI, MINN.
THORSON, TERRI SUE, VINING, MINN.
THUNDER RIDERS MC, PENNINGTON, MINN.
TILBURY, RUSSELL A., SHEVLIN, MINN.
TILL, DARYL, CASS LAKE, MINN.
TIMBERLINE DIST CO., BEMIDJI, MINN.
TIMM, BRIAN C., BEMIDJI, MINN.
TIMMERMAN, TIM W., NORTH PORT, FLA.
TIPPMER, DIETER, BEMIDJI, MINN.
TISCHLER, JAMES E., SAINT PAUL, MINN.
TISLAND ESTATE, KENNETH WAYNE, SAINT PAUL, MINN.
TIX, GREG J., SOLWAY, MINN.
TOHN, GARY L., SAINT PAUL, MINN.
TOSTENSON ESTATE, C.B.; JEAN R. TOSTENSON, ALBERT LEA, MINN.
TREICHEL, JODI M., BECIDA, MINN.
TRIGGS, TIM J., BEMIDJI, MINN.
TRIPLETT, WILLIAM J., CASS LAKE, MINN.
URCH, JARED M., ARLINGTON, MINN.
URUO, JENNIFER N., BEMIDJI, MINN.
VALENTIN, ROBERT M.; LORI VALENTIN, BEMIDJI, MINN.
VANEK, ROBERT D., SAINT PAUL, MINN.
VANSTEENWYK ESTATE, VERLYN; SANDRA PAULY, WALKER, MINN.
VANWERT, PAMELA, SOLWAY, MINN.
VAUDRIN, FRANCIS W., SHEVLIN, MINN.
VENN, BERNARD J.; CHARLOTTE C. VENN, CANNON FALLS, MINN.
VERBEKE ESTATE, JOSEPH J., PRIOR LAKE, MINN.
VETTER, DARRELL, FERGUS FALLS, MINN.
VILLEBRUN, WILLIAM, CASS LAKE, MINN.
VINJE, KEITH A., CHASKA, MINN.
VOELKE, CYNTHIA, SAINT PAUL, MINN.
WALKER, DON, OWATONNA, MINN.
WALSH, DAVID H.C., BEMIDJI, MINN.
WALSTAD, LEE, LAPORTE, MINN.
WASHINSBY ESTATE, RICHARD, CASS LAKE, MINN.
WATTS, DARIN J.; JESSICA A. WATTS, NEW ULM, MINN.
WEAVER, PATRICIA A., NAYTAHWAUSH, MINN.
WEBB, WILLIAM A., BEMIDJI, MINN.
WEBER, JIM, BEMIDJI, MINN.
WEISE, BRAD, KELLIHER, MINN.
WELTER, CRAIG, BEMIDJI, MINN.
WESLOH, TAMMY, BEMIDJI, MINN.
WESTRUM, JULIE R., BURNSVILLE, MINN.
WHITE, STEVE T.; KELLY N. WHITE, DULUTH, MINN.
WHITE, AGNES J., MINNEAPOLIS, MINN.
WHITE, SHANNON R., CASS LAKE, MINN.
WHITE ESTATE, FRED R., ONAMIA, MINN.
WIDMAN ESTATE, FLORIAN E., CLEARWATER, MINN.
WIESER, DONALD H., WALKER, MINN.
WILKINS, CHARLES, SOLWAY, MINN.
WILKINSON, TRACY D., BEMIDJI, MINN.
WILLERT ESTATE, HOWARD A.; KATHRYN A. WILLERT, BLAINE, MINN.
WILLIAMS, CAROL J., CASS LAKE, MINN.
WILLIAMS, RICHARD E., BEMIDJI, MINN.
WILLIAMS, LLOYD, TRUMAN, MINN.
WILLIAMS ESTATE, CLYDE, EDEN PRAIRIE, MINN.
WILLMS, KENNETH G., DULUTH, MINN.
WILSON, JACK L.; SUZANNE M. WILSON, ROCHESTER, MINN.
WILSON, ROY I., NOKOMIS, FLA.
WILSON, BARBARA, GROVE CITY, MINN.
WILSON SR., EARL, DULUTH, MINN.
WINZENBURG, ANDREW M., BEMIDJI, MINN.
WISTROM RIKERD, ELINOR, BEMIDJI, MINN.
WITTNER, MILLESSA A., CASS LAKE, MINN.
WITTNER, RANDY C., CASS LAKE, MINN.
WOLFGARTH, HERBERT, BEMIDJI, MINN.
WOLLITZ, LENNY L., BEMIDJI, MINN.
WRIGHT, ROCKY M.; JESSICA R. WRIGHT, P C BEACH, FLA.
WRIGHT, GREGORY R., CASS LAKE, MINN.
WRW INC.; WAYNE ECKSTEIN, BEMIDJI, MINN.
WUBBELS, JOHN R., HOPKINS, MINN.
YERBICH, JEROME, BEMIDJI, MINN.
YSTEBOE, LORI J., MINNEAPOLIS, MINN.
ZACHER, TERRANCE; CHARIS ZACHER, PIPESTONE, MINN.
ZENO ESTATE, WARNER, PRIOR LAKE, MINN.
ZILKA, RICHARD L., MINNEAPOLIS, MINN.
ZIMMERMAN-FARNAM, MARY, BEMIDJI, MINN.
ZOLONDEK, PATRICIA, PILLAGER, MINN.
ZWINGER ESTATE, ROBERT J.; PATRICIA R. ZWINGER ESTATE, PLYMOUTH, MINN.

CLASSIFIEDS

Classified ads rules

- Ads are due by the first of the month prior to publication of the next issue. Example:
 - o Ads submitted by July 1 will be published in the August issue.
 - o Ads submitted between July 2 and August 1 will be published in the September issue.
- Ads may be submitted via our website at www.beltramelectric.com (preferred).
- Include your name and Beltrami Electric account number on all submissions.
- All ads must be **50 words or fewer** and typed or printed clearly.
- Members may only submit one for sale and one wanted or free ad per issue.
- No real estate, rental, personal or commercial ads will be accepted.
- Ads are published at no charge as space permits on a first-received, first-priced basis, **with no guarantee your ad will appear.**
- Ads are only allowed to be repeated for **three consecutive months** and must be resubmitted each month.
- Editor reserves the right to edit or reject any ad.
- All telephone numbers are presumed to have a 218 area code unless otherwise noted.
- Mail ads to: Beltrami Electric Cooperative, P.O. BOX 488, Bemidji, MN 56619.

For Sale:

2 girls' bicycles, Diamondback Tess 24" girls' mountain bike, 2 years old, like new, \$180 new, asking \$100 and Schwinn Ranger 24" girls' mountain bike, 3 years old, like new, \$130 new, asking \$80, 612-222-6058.

2017 Avalanche 355R 5th wheel w/3 slides, fireplace, king bed, stainless appliances, 2 TVs, full shower, 4-season package, 12 gal hot water heater, hide a bed, many extras, like new! Only used for a summer \$46,000/obo. Call Chad 368-1265.

1988 14-ft Alumacraft fishing boat with 20 hp Mercury motor and newer Karavan trailer, all in good shape \$1,200. Call 766-5472.

Kenmore electric dryer, runs well, with 2 additional 220 power cords. \$100 firm. 630-800-3386.

3-cushion sofa in great shape, best offer takes it home. Call for detailed details. 444-1662.

1947 John Deere "H" Tractor-repainted, rewired, new stickers, new front tires, rear in good shape \$4,500/obo. 4 antique radios from 1930's to 1960's-repaired and in good working condition. \$50 to \$75 each. Call 751-0126 evenings, ask for Bill, or leave name/number on answering machine.

14-ft Delhi boat on trailer, outboard, 2 swivel chairs. \$750. Also a 3½ hp Johnson motor, \$150. Call 751-5672. Leave a message.

1994 Donzi Medallion 2/2 Runabout. 5.7 liter Mercruiser. Depth finder included. Fast and fun. Very nice condition. \$6,000. Call 507-990-6663.

500 rounds, 5.56mm Federal Ammunition, 55 grain FMJ, American Eagle, \$175, 150 rounds, .30 caliber M2 from Lake City Army Ammunition Plant, \$100, Winchester Model 1300 Defender 12 gauge, black, never fired, \$250. 863-843-5285.

Firewood, in pile ready to cut to length. Mostly birch, pine, aspen. Northern Township drive up to pile, cut and load. \$25 per pickup load. 766-1656.

Diamond "Nuclear Ice" youth bow with practice arrows, hard case. "Digital Pink" color. Excellent cond. For kids 4-10 yrs. Fully-machined aluminum riser, beyond-parallel limbs, pivoting limb pockets, smooth cams. IBO speed: 187-195 fps, weight: 2.9 lbs., let-off: 70%. Draw length adjustments 14"-24". Draw weight adjustments 10-29 lbs. \$300. 368-4834

Steel pole, welded pipe sections - might be used for flag or light pole, TV/radio antenna mount, or ? 25-ft long, 4" at base, 2½" at top. Photo available, \$25. 970-390-8431 Laporte area (no delivery).

Diamond Razor Edge compound bow with accessories, \$350. Black Itech hockey bag, \$50. Horse statues and plates, call for details. Armstrong Flute, \$200. 759-0186.

37x59 glass-topped patio table, 6 chairs, \$160. Two hanging hammock-style chairs, \$50. Metal enameled table on wheels 24x36x27H, perfect for outdoor entertaining or plants, \$25. Samsung electric smooth-top range, \$200. Logging peavey \$50. Heavy-duty bolt cutter, \$50. Golf ball bonanza, 25 cents each. 586-2884.

Kitchen Aid mixer, like new, \$135. Solid oak antique four-drawer dresser with upright mirror, must see, \$175. Alumacraft 14-ft boat with trailer, \$350. Matching pine dresser and night stand, \$225, will sell separate. Women's antique bike with hand brakes, \$35. Office chair, \$35. 224-2483.

Beautiful flowers! Local organic flower farmer wants to deliver four weekly bouquets at one monthly price of \$85. Annuals, perennials and herbs. Every bouquet will surprise you. Call 556-0586.

1955 Ford Convertible Sunliner, \$40,000; 1950 Chevrolet Convertible, all original, \$50,000. 1955 Chevrolet 265 V8 block, \$250; 1955 Ford trunk lid, good condition, \$100; 1941-48 new Ford Station Wagon/woody left rear fender, \$300; 1942-48 NOS Chrysler front left fender, \$200; Forty-year collection of old car parts, make offer. 333-3916.

Qt. glass mayonnaise jars (good for canning pickles) 1 narrow and 33 wide-mouth jars. 1/2 pt. jelly jars 14 regular and 15 decorative jars. All jars 25 cents each. Located in Walker. Call 612-618-0422 and leave message for Sandra.

Roll-A-Dock: (5)- 8-foot sections. Cedar planking. Older model but in good condition. \$250/section. 759-7730.

Wayne 1 hp sprinkler and utility pump w/16' suction line and filter \$120, 16' extension ladder \$70, 5- 3'x3' HD fatigue mats \$60, hose reel w/100' hose \$30, new treated 4x4 mailbox post \$40, large driftwood for yard \$125. 586-2534.

Craftsman electric weed whip, works well, \$50. Heavy duty 4-bike hitch carrier, \$75. Oak base kitchen cabinet, 33" x 24" x 36"H, \$75. 759-9534.

14' aluminum North Woods boat, with Spartan trailer, and 7.5 hp Evinrude outboard motor. 12' Lowline boat, and 4 other 14' aluminum boats, Alumacraft, Naden, Mirrocraft and Lund models. Call 760-8266.

1993 Coachmen Catalina 295 TB travel trailer (30'?). Roof replaced 2 years ago, new flooring, A/C and heat work! Fridge does not work (not sure what is wrong). Rear bunk beds. \$3,400/obo. 243-3029 leave message.

5300 Btu Kenmore window air conditioner with remote, 23 x 14 inches. \$75. Pack-n-play, \$25. Stroller, \$20. Highchair \$20. 556-7997, leave message.

1991 21' Larson All-American boat. Blue and white in color, in very good shape and always under tarp and kept in builds. Kids are gone so not used much now. On the lift at Cass Lake. \$7,950/obo. Call 701-741-9731, I can send pictures also.

Two 7.5 hp Mercury outboard motors, 2-stroke with gas tanks. \$1,000 for the pair. Call or text 218-766-6514.

Homemade quilts: 4, 5, 6-inch Block, Crazy, Star, Twin, \$35. Full, \$40. Queen, \$55. King, \$60. Sewing machines, \$15 each. 243-2702.

17' aluminum pontoon w/30 hp Mercury, electric start, \$995. 760-3298.

New in box: porcelain on steel bathtub, 54" long, left drain, made by Bootz Industries. \$350. 44-gallon water works tank for well. New in box, max 100 PSI, rating vertical pressurized, \$300. 444-8747. No Saturday calls please.

1956 Case tractor model 511B, runs good, hydraulics for eagle hitch needs work. \$1,000. 751-4174 or 368-4923.

2004 Craftsman ZT7000 zero turn lawnmower. 18 hp, 50" cut, Kohler engine, 360 hrs. Runs great, just needs blades sharpened and maybe new battery. Doesn't have the plastic body parts anymore. \$700/obo. 243-3029.

Set of 4 Michelin tires p215-55-r17, 25,000 miles. \$35 each or \$120 for all four. 2 round oak tables. \$50 and \$120 each. Please call 766-9587.

1993 Celebrity 21-ft. open bow - Cruise/ski/fishing boat. Like new "Heritage" tandem axle trailer. Boat has GM 350 Mag V8 Mercruiser I/O. Bimini top w/other canvas and trailing cover. Water skis and tow rope. \$5,200. Registered thru 2022, trailer licensed thru 2021. Docking lines. Call 308-4111.

Stainless steel Bradley smoker. 6-rack digital meat smoker. Cost \$549.99 new. Used very little and in great shape. I have 4 boxes of wood pucks that cost about \$25 a box to include. \$250 firm. Text Dave at (320) 221-1052.

IT'S CHRISTMAS IN THE SUMMER! Beautiful 7.5 foot LED pre-lit McClain Christmas tree purchased from Home Depot in December, 2019. Tree has multicolored or all white lights controlled by hand remote or foot pedal controller. Paid \$300. Will sell for \$100. Call for details: home 759-9339 or cell 766-0659.

2013 Heartland North Trail 24RBS camper. Excellent condition, rarely used. Solid camper - bath in at \$9,750. Jeremy - (970) 420-8466 call for pictures.

Super C Farmall, narrow front, with cultivator, over hauled 368-3794.

Antique 1953 John Deere model 50 loader with snow bucket and dirt bucket. New intake

and exhaust manifold. New live power. Runs good, tires fair. Needs paint, no power steering. \$2,000/obo. Laporte area, 224-3110 or 407-4791, leave message on cell.

24 x 60 office wood desk with matching 20x60 credenza. White with wood grain top. Perfect for "work from home." File and box drawers as well as shelf storage includes office chair and floor mat. \$200. Excellent condition. Also electric corner fireplace - black - \$150, like new condition, 224-3866.

Yamaha Eb Alto saxophone in excellent condition with case, gold-tone, will make a great student instrument. 759-1476.

Wanted:

Will dog sit for you, Bemidji-Blackduck area. Email mnwomant120@gmail.com.

Looking for an electric kids ATV; a post-hole digger; and dumbbell weights. Call or text Matt at 218-368-0737.

I am looking for empty cattle mineral lick tubs to use for planters/pots. 556-1222.

Older smaller tractor with 3-point capability in good working condition. 751-4171 or 368-4923.

Garden tractor w/mounted tiller in good condition. 407-7081

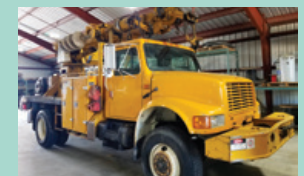
Looking for a women's or youth compound bow. Any bow with lower draw weight. Call or text Matt. 368-0737.

Kubota tractor with loader, approximately 30 horse, low hours call John 368-3794.

Small direct vent propane free-standing fire place. 320-815-0474.

ITEMS FOR SALE BY BID

Items are available for viewing at Beltrami Electric, on the east side of the building, in front of BEC's garage area from July 6-10, between 8 a.m. and 4 p.m. Bids will be accepted during this time as well. Items sold "as-is." Cash only. Successful bidder is responsible for all taxes, license and transfer fees.



1993 International 4800 4x4 Pitman Polecat Digger Derrick, 2-ton, single axle, with winch, manual and maintenance records available, failed to pass dielectric testing, 167,299 miles. **Minimum bid: \$11,000.**



1995 International 4800 4x4 Texoma TX342 Digger Derrick, 2-ton, single axle, with winch, manual and maintenance records available, failed to pass dielectric testing, 151,798 miles. **Minimum bid: \$12,000.**

**When it comes to severe weather...
hope for the best, *but prepare for the worst.***



You can begin your preparation by assembling an emergency preparedness kit, which includes items to help keep your family safe and comfortable during a power outage. Your kit should include items such as water, non-perishable food, flashlight, batteries, blankets, and a first aid kit.

- ___ Drinking water & food
- ___ Blankets, pillows, & clothing
- ___ Basic first-aid supplies
- ___ Medications
- ___ Basic toiletries
- ___ Flashlights
- ___ Battery-operated radio
- ___ Extra supply of batteries
- ___ Cell phone with chargers
- ___ Cash and credit cards
- ___ Basic tools (duct tape, wrench, etc.)
- ___ Important documents & numbers
- ___ Toys, books, & games
- ___ Baby supplies
- ___ Pet supplies

Learn more at: 



The
PERFECT
POWER PICK
for your cabin

You're an outdoorsman wanting to update your cabin – choose a **mini-split heat pump**.

Your lakeside home away from home will be cozier with the flexibility, efficiency and ease of a mini-split heating and cooling system.

Contact the energy experts at Beltrami Electric to find the perfect power pick for your space.

218-444-2540 or 1-800-955-6083
www.beltramielc.com

**Up to
\$650/ton
in rebates!**



MINI-SPLIT HEAT PUMP

- Steady warmth in drafty bedrooms
- Extra chill in the sunroom
- Efficiently heat/cool only where needed
- Easy, ductless installation
- Qualifies for super-low off-peak electricity rate

We are looking for you!



Beltrami Electric is looking for Alvin W. Wilson (Cass Lake, Minn.). Please call 218-444-2540 if you have any information.



4TH JULY

**Beltrami Electric will be closed on
Friday, July 3, 2020,
in observation
of Independence Day.**



Beltrami Electric Cooperative Inc.

® Your Touchstone Energy® Cooperative 

4111 Technology DR NW
PO Box 488
Bemidji, MN 56619-0488
218-444-2540 • 800-955-6083
www.beltramielectric.com

Congrats!

CLASS OF 2020 SCHOLARSHIP RECIPIENTS

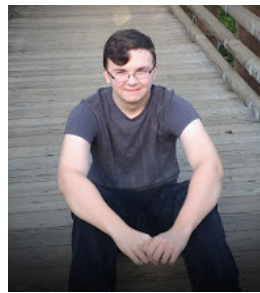
Beltrami Electric Cooperative awards scholarships annually to students attending seven high schools within BEC service territory. This year, the cooperative awarded \$1,000 scholarships to seven area high schools in our service area. To be eligible, students' parent(s) or guardian must be a Beltrami Electric member and show proof of enrollment in a post-secondary education institution the following year. Each school selected the winners through committees or guidance centers. Beltrami Electric scholarships are funded with unclaimed capital credits that otherwise would be forfeited to the state.



Elizabeth Rafferty
Bemidji High School



William Johnson
Blackduck High School



Xavier Fournier
Cass Lake – Bena High School



Tayler Neft
Kelliher High School



Kortni Kerby
Laporte High School



Gerika Kingbird
Red Lake High School



Rachel Pitt
Walker-Hackensack-Akeley High School



Jake Atencio
Trek North High School

AT-LARGE SCHOLARSHIP RECIPIENT

Beltrami Electric also awarded one \$1,000 At-Large Scholarship to a student who is a dependent of BEC members attending a school other than the seven listed above. This scholarship was awarded based on a combination of academic achievement, work experiences, participation in school and community activities, submission of a 500-word essay and two written letters of recommendation by a third party.

Beltrami Electric is pleased to contribute to the further education of students each year. We wish them the best of luck in their studies and careers!