

NORTHERN

L I G H T S

January 2022



Blackduck Community Library Board



Accepting the local 2021 Touchstone Energy® Community Award for Blackduck Community Library Board: Laraine Roach, Kelly Hanks, Cameron Koenen, Paula Erickson and Miriam Osborn-Dougherty.

BELTRAMI ELECTRIC NAMES 2021 TOUCHSTONE ENERGY® COMMUNITY AWARD WINNER

Beltrami Electric Cooperative has selected the Blackduck Community Library Board as the winner of the local 2021 Touchstone Energy® Community Award from a pool of excellent and worthy nominations. The award recognizes organizations for showing a strong commitment to their community and comes with a \$500 cash award and an engraved Touchstone Energy Community Award plaque.

The Blackduck Community Library Board is a nonprofit organization that advocates for the library and the community it serves. The board works to make the library an inviting place to learn and grow and offers a safe place for area children to spend their spare time while learning new things. The needs and interests of the community are at the forefront of their efforts.

The Library Board was kicked off by the Blackduck Tri Sigma Club over 50 years ago, and has eight members along with a city representative. Collectively they apply for grants, organize fundraising events such as a pie sale, book sales and gift basket sales, and

pursue donations to help facilitate programs and projects for the entire community. The Library Board has hosted programs and events such as Trunk or Treat, After School Movie Night, Adult Craft Nights, Adult Winter Reading Program, the Children's Summer Reading Program and other regular programming. They make a point of adding money to the book funds so the library can keep up with ordering materials that they couldn't otherwise afford. Additionally, they have sponsored a family-friendly community event at the Backwoods Bash each year.

"The community and surrounding area take great pride in this cozy little library," said Kelly Hanks, branch manager. "We are so happy to see everything that the Library Board is doing in our community."

The Blackduck Community Library Board application will be submitted for consideration to the statewide Minnesota Touchstone Energy Community Award committee. The statewide award recipient will be selected from numerous local award winners throughout Minnesota and the overall winner will receive \$1,000 toward a community cause of choice.

NORTHERN

L I G H T S

Northern Lights (USPS 016488), Vol. 69, No. 1

Northern Lights is published monthly by Beltrami Electric Cooperative Inc., 4111 Technology Drive NW, Bemidji, Minnesota 56601-5128. Subscription rate \$5. Periodicals postage paid at Bemidji, MN 56601.

Postmaster: Please send address corrections to Beltrami Electric Cooperative Inc., P.O. Box 488, Bemidji, Minnesota 56619-0488.

Office Hours: 8 a.m. to 4:30 p.m.
Monday – Friday

Member Service: 218-444-2540
or 1-800-955-6083

www.beltramielectric.com

Board of Directors

Chair	John Lund, DISTRICT 7
Vice Chair	Sue Kringen, DISTRICT 8
Secretary	Murl Nord, DISTRICT 1 (<i>Square Butte Director</i>)
Treasurer	Sharon Lembke, DISTRICT 9
Directors:	Charlie Perkins, DISTRICT 2; Michael Monsrud, DISTRICT 3; Craig Gaasvig, DISTRICT 4; Robert Wallner, DISTRICT 5; Rick Coe, DISTRICT 6 (<i>Minnkota Director</i>)
President and CEO	Jared Echternach
Editor	Angela Lyseng

Minnesota State Electrical Inspectors

Beltrami County

Wade Koons

218-255-3011 - wade@koonsinspections.com

Cass and Hubbard Counties

Jeff Overmyer

218-252-0919 - inspectorovermyer@gmail.com

These are the inspectors covering the area served by Beltrami Electric. They can be reached by phone Monday through Friday between 7 and 8:30 a.m. or by email as indicated.

Gopher State One Call 811
1-800-252-1166 or 811
www.gopherstateonecall.org

Anyone who plans to dig is required by law to notify the state of their intentions at least 48 hours in advance.

All digging requires the 48-hour notification so that buried telephone lines, television cables, pipelines, utility electrical lines, and municipal water and sewer lines can be located to ensure that none will be severed or damaged.

Mission of Beltrami Electric Co-op

To provide excellent value to our members through the safe delivery of reliable electric service, excellent member service and innovative energy solutions at fair and reasonable prices.

This institution is an equal opportunity provider and employer.



Working with local legislators

by Jared Echternach, president and CEO

“All politics is local.” This observation by the late Thomas P. “Tip” O’Neill, Jr., former Speaker of the House of Representatives, means that even national politics have a local impact, and people care most about issues that directly affect them. Indirectly, this famous adage underscores the importance and value of local politics.

At Beltrami Electric Cooperative we think it’s critical to develop and cultivate relationships with local legislators because they craft, introduce and vote on legislation that impacts the local business climate, the environment and quality of life for our community. That’s why we work closely with our local elected officials. After all, our purpose is to provide safe, reliable, affordable energy, but our mission is to help our communities thrive.

Beltrami Electric Cooperative is a local business that powers economic development and prosperity for our region. As a cooperative, we have deep roots here, and we listen closely to our members to better understand the needs of the community. Our leadership, board members and employees live and work right here in the communities we serve.

We strive to be an advocate for our communities, ensuring that local legislators know, understand and act on the issues that are important to our area.

Providing industry guidance and expertise

As a practical matter, we recognize that most legislators are “generalists,” yet they vote on a wide range of issues. Their expertise may not include the changing energy industry, which is why Beltrami Electric Cooperative provides guidance and expertise from subject matter experts who’ve been in the energy industry for many years.

Today’s energy landscape is an increasingly complex topic covering not only the traditional engineering and vegetation management aspects of the industry, but it also encompasses technology, cybersecurity, the electrification of the transportation sector and more.

Our experts provide briefings and backgrounders to legislators, committees and staff, and we offer expert testimony for hearings and other legislative or regulatory meetings or gatherings. And because we’re involved in economic development and we know local community leaders, we can provide insight on how issues and policies under discussion might impact our region.

Co-op as a convener

In addition, we periodically invite legislators and their staff to the co-op for tours so they can see firsthand how we operate and can view our operations center, substations, community solar garden and EV charging stations.

Representing your best interests

We strive to be a trusted resource on energy issues. Because of our deep roots in our communities, we have a firm understanding of local issues and needs. We will continue looking after the long-term interests of our members. This means we are able to cultivate and foster positive, productive relationships with legislators who know and trust us, because we’re advocating on behalf of the communities we serve.

We’re proud to power your life and bring good things to our communities. We hope you’ll continue to advise Beltrami Electric Cooperative on matters of importance so we can continue to advocate on your behalf and improve the quality of life for all.

MARTIN LUTHER
KING JR. DAY

Beltrami Electric will be closed on

Monday, Jan. 17, 2022,

**in observance of Martin Luther
King Jr. Day.**

MITTEN TREE A HUGE SUCCESS!

In December, Beltrami Electric Cooperative (BEC) delivered donated mittens, gloves, hats and scarves to children at eight area Head Start and Early Child Family Education (EFCE) programs, as well as St. Mary's Mission School in Red Lake, as part of its 22nd annual Mitten Tree campaign.

BEC set an all-time new record number for items donated this year, with over 1,700 items collected. "The support from our members and communities has been overwhelming," said Angela Lyseng, communications specialist at Beltrami Electric Cooperative. "In previous years, our goal was to provide one item to each student. This year however, we had enough items to supply all the children in the Head Start and ECFE programs, along with a few of the elementary schools. We received some wonderful homemade hats, mittens and scarves."

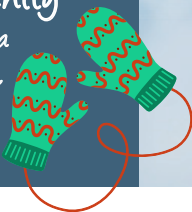
As some of you might know, cooperatives around the world adhere to the same seven cooperative principles that guide all our decisions – from how we run the co-op, to how we engage with our local communities. Concern for Community is the seventh principle and it is one that seems especially important. No matter how great or small the act, every time we give back, we strengthen our community.

Whether you dropped off your items, shipped them to us or mailed in a cash donation to purchase items, we are beyond grateful. It was so fun to see the items that were selected or made with love for our area children, and the excitement in the children's faces upon delivery was priceless. Thank you to everyone who helped with a donation to the Mitten Tree this year. A special thank you to Esther Homister-Kingbird, who knitted and donated over 500 colorful hats.



Commitment to Community

By working together, we can make a big impact in our local communities, keeping children warm for yet another winter season.



EMPLOYEE NEWS

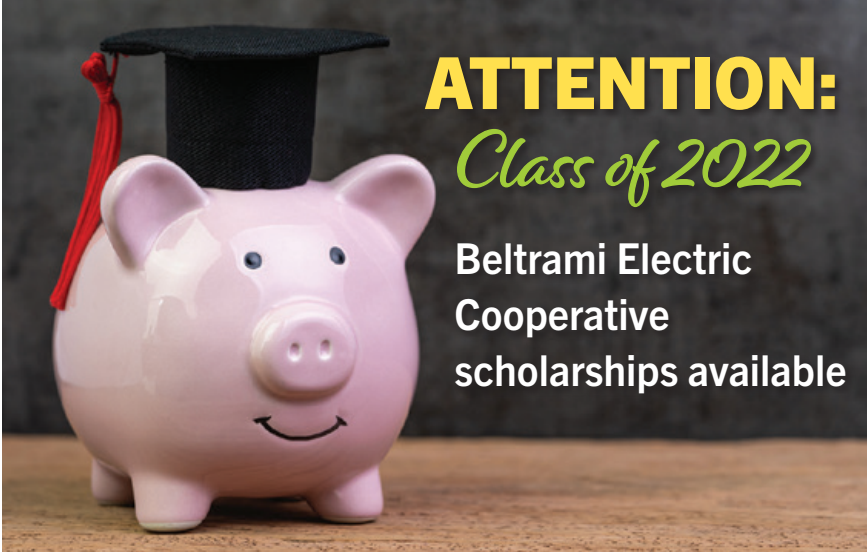
Mike Birkeland joins Beltrami Electric Cooperative

Beltrami Electric Cooperative welcomes Mike Birkeland as its new vice president of electrification and member experience. He comes to the co-op with more than 30 years of management experience, formerly as executive vice president of Minnesota Forest Industries and the Minnesota Timber Producers Association. Prior to his work with the forest industry associations, Mike served as the director of member service, community relations and strategy at Grand Rapids-based electric cooperative Lake Country Power. Prior to that Mike was the regional communications manager for Pottlatch Corporation in Cloquet.



"Mike's dedicated leadership to our industry strengthens our cooperative and positions us to advance our beneficial electrification efforts with a focus on the member experience," said Jared Echternach, president and CEO. "We're excited for Mike to join our cooperative family."

"I look forward to serving alongside employees of Beltrami Electric to serve members of the cooperative," said Birkeland. "Electric co-ops have powered rural communities for more than 80 years, and with innovation and technology advancing at a rapid pace, Beltrami Electric will play an even more important and essential role supporting members and shaping communities in the region well into the future."



ATTENTION: Class of 2022

**Beltrami Electric
Cooperative
scholarships available**

Beltrami Electric Cooperative At-Large Scholarship

Beltrami Electric will award one \$1,250 At-Large Scholarship to a Beltrami Electric Cooperative member or a dependent of a Beltrami Electric member who plans to enroll as a full-time student in their first year in an undergraduate course of study at an accredited two-year or four-year college, university or vocational/technical school.

The At-Large Scholarship program is for students who **do not attend one of the seven schools** listed under Beltrami Electric's High School Scholarship program. At-Large Scholarships will not be awarded to Beltrami Electric employees or dependents of employees, board of directors or the Beltrami Electric Trust Board. Information and applications can be found at www.beltramielc.com. Applications must be received by **April 1, 2022**, for consideration.

Good for technical school, college or university

Beltrami Electric Cooperative will be offering \$1,250 in scholarship money to deserving students of BEC members attending seven area high schools. If you are a high school senior and are interested in applying for a scholarship from BEC, please contact your high school's designated guidance office or scholarship committee for additional information and applications. The scholarship selection process is handled through each school's designated career guidance offices or scholarship committees.

Beltrami Electric Cooperative funds scholarships with unclaimed capital credit dollars that, per Minnesota state law for unclaimed property, would otherwise be forfeited to the state. As a co-op, Beltrami Electric returns excess revenue to members as capital credits. When capital credits are unclaimed, they are deposited into a separate fund for education and are used to offer scholarships for the children of co-op members.

Eligibility – Who can apply?

Students graduating from high school in 2022 are eligible to apply. You must be:

- A dependent of a Beltrami Electric Cooperative member (*a parent/guardian must be named on account*).
- A high school senior who plans to enroll as a full-time student at an accredited two-year or four-year college, university or vocational/technical school.
- Graduating from one of the seven schools listed below.

- Bemidji High School
- Cass Lake High School
- Laporte High School
- Walker-Hackensack-Akeley High School
- Blackduck High School
- Kelliher High School
- Red Lake High School

Where do I apply?

Contact your high school's designated guidance office or scholarship committee for applications and deadlines.

**Rebates?
Check!**

**Energy efficiency tips?
Got 'em!**

**Smart gadgets?
You bet!**

Our lives become more electrified every day – and you have the power to harness the value of this clean, safe, 24/7 resource. Your cooperative's refreshed **Value of Electricity** website will show you all the ways you can use electricity more effectively to add convenience, intelligence and savings to your home.

Visit the site for:

- Rebates/incentives specific to your cooperative or municipal utility
- Advice for the most efficient use of energy in your home
- Steps to “go electric” in every area of your life
- Local, firsthand stories from those who have captured the Value of Electricity
- Benefits of installing electric heating, water heaters, car chargers and more!

VALUE OF ELECTRICITY

Check it all out at
valueofelectricity.com

50¢

**First 5K
without slowing?**
It's a powerful experience, powered by just 50 cents of energy.

This Summer ... Go on a Power Trip!

June 14-19, 2022



Be there.

Be heard.

Be inspired.

One student, whose parent or guardian is a BEC member, will be selected to represent our cooperative in the National Rural Electric Cooperative Youth Tour, held each year in June. In 2020 and 2021, the Youth Tour was canceled due to the coronavirus pandemic, but plans are in the works for the 2022 Youth Tour to proceed June 14-19.

Each year, rural electric cooperatives across the nation sponsor roughly 1,900 students on the Rural Electric Youth Tour to Washington, D.C. This unique trip gives young people the opportunity to watch history come alive, explore museums, memorials and monuments, make friendships that will last a lifetime and be part of a group that has more than 50,000 alumni in every

walk of life, including U.S. Senators and CEOs. The Youth Tour program continues to foster the grassroots spirit of the rural electric cooperatives by demonstrating to high school juniors and seniors how our government works and what the electric cooperative business model is all about. In a time when energy is at the forefront of our nation's issues, this is a great opportunity to have a hand in the creation of electric cooperative advocates! BEC's winner will travel with approximately 40 Minnesota teens sponsored by other rural electric co-ops and join 1,900 national delegates in Washington, D.C. If you have questions, contact Angela Lyseng at (218) 444-3689. The deadline is **Friday, Feb. 25, 2022.**

ELIGIBILITY AND REQUIREMENTS:

- To enter the contest, you must be a junior in high school (*will be a senior in fall 2022*).
- Submit completed application and two letters of reference from teachers, group leaders or community leaders.
- Your parent(s)/guardian(s) must be a member of Beltrami Electric.
- Submit a current photo.

HOW TO APPLY:

- Applications are available in your school counselor's office or via download at www.beltramielc.com/youth-tour-washington-dc.

DEADLINE TO APPLY: FRIDAY, FEB. 25, 2022

- You can email entries to Angela Lyseng at alyseng@beltramielc.com or mail a hard copy to Angela Lyseng, Beltrami Electric Cooperative, PO Box 488, Bemidji, MN 56619-0488.



CLASSIFIEDS

Classified ads rules

- Ads are due by the first of the month prior to publication of the next issue.
 - o Ads submitted by January 1 will be published in February issue.
 - o Ads submitted between January 2 and February 1 will be published in March issue.
- Ads may be submitted via our website at www.beltramelectric.com. (preferred)
- No real estate, rental, personal or commercial ads will be accepted.
- All ads must be 50 words or less and typed or printed clearly.
- Editor reserves the right to edit or reject any ad.
- Members may only submit one for sale and one wanted or free ad per issue.
- Ads are published at no charge as space permits on a first-received, first-printed basis, **with no guarantee your ad will appear.**
- Ads are only allowed to be repeated for **three consecutive months** and must be resubmitted each month.
- Include name and Beltrami Electric account number on all submissions.
- **NOTE: Anyone with a telephone number from the 218 area code will need to dial 10 digits (area code + telephone number) for all local calls.**

For Sale:

Electric boiler, Slant/Fin Monitron model EH 28-135-S. Heated a large house, replaced with natural gas. Works great! \$350. 218-766-1656.

Sell/trade: anything you could want or need for your riding horse/pony. New/used. Hard hats, saddles, Western, English, Aussie, youth. Bridles, show and regular, halters/leads. Blankets/sheets, fly sheets/boots/masks, wraps, pads, grooming equipment, pony wagon w/new harness, everything! Text to 218-888-2008, Kelliher to view. Sold my horse/ponies, not a store/reseller. Want trained driving pony.

Beautiful bar unit with marble top. Includes 4 leather bar stools, 32" H, seat 18x13, bar unit is warm brown with wrap around footrest, 60" W x 42" H. \$850. 218-766-3834.

Used RESMED CPAP from Sanford Sleep Center, no power cord, \$50. 218-835-7484.

Lee classic 4-hole turret press. \$125. RCBS 30-06 die set. \$50. Lee collet neck

sizing die 30-06. \$20. All items new in box. \$175 for all. 218-556-9350.

Diamond brand youth bow with three practice arrows and hard case, excellent cond., \$250. Also selling a set of four Nexen 235/40R19 used tires, good cond., \$80 for the set of four tires. 218-368-4834.

Violin for sale, 4-4 saucony, very good condition, \$700. 218-556-6583.

Taking orders for memory keepsake stuffed animals. 218-766-6510.

14x64 Roll-a-Home mobile trailer to be moved in summer 2022, in the Guthrie/Nary area, best offer. 218-224-2151.

Stellar GL manual tilt wheelchair, near new, small adult size 16" seat width. Tilts back to 45 degrees via handles to keep PT from falling out. Can email pics/specs. Custom built and over \$3,000 new. \$100. 218-766-4319.

Mixed hardwood firewood, mostly oak. cut and split, stacked in an 8-foot pickup box, delivered in Bemidji area. \$115/load. 218-760-3800. I don't always carry my phone so please leave a message.

4 Goodyear tires, take offs, like new, 225/60/R16, \$150. Call 218-766-2132.

Like new Blizzak snow tires with rims. Size P215/70R16. \$395. Call or text 218-760-3955.

Western 7.5 ft ProSnow plow, unimount, like new, on 1977 Ford F250, needs clutch and master brake cylinder \$3,500/obo. Franklin parlor stove, never used, good cond. Best offer. 218-407-7247.

Hoyt ProTec compound bow package in pristine/mint condition. Adjustable draw length 26.5"-29". New waxed strings when stored in case. HHA Optimizer slider sight, Tru-fire release, Whisker Biscuit Premium rest, Plano Pillarlock case, ICS Hunter 400 arrows. All equipment maintained meticulously and in perfect condition. \$475 for all. 218-444-6014.

White high-chair with new blue, print seat pad, \$15. Blue stroller, \$15. Build a mini-wagon-set of four 5" wheels, 2 axles, \$5. Assortment of ski equipment – downhill and cross-country skis, boots and poles. Five sets. Make an offer. 218-586-2884.

2013 Ford F-150 Crew Cab pickup. Features tailgate step, rear-view camera, Sirius satellite radio, Microsoft Sync, WeatherTech floor liners, front and rear seat covers, power-adjust pedals, bedliner. Excellent condition. 68,500 miles. \$26,000. Call 218-766-5805.

"These Old Boots" by Jim Lowmaster. Covers growing up on a dairy farm during the Great Depression, outline of World War II, Marine Corps service and adventures as a forester on four Indian reservations, including Red Lake. 802 pages in 2 volumes. \$45 or \$52 if mailed. If interested, call 218-586-2492.

6-ft, 3-point Erskine snow blower com-

pletely rebuilt \$750. 1,000-gallon plastic septic tank, new never used \$550. Call Joe 218-586-2101.

Two 9-ft x 7-ft insulated garage doors, brown, with all hardware for installing. Good condition. \$250. 218-547-3128.

Homemade quilts: 4-5-6 inch Block, Crazy, Star, Twin, \$40. Full, \$45. Queen, \$65. King, \$70. New SuperAll Grip 700-15 L.T. tubeless tire, \$40. 3-drawer dresser, 44" W x 19½" D, 1 drawer 4" D, 2 drawers 39" D, had been restored, \$75. Sewing machines, \$15 each. 218-243-2702.

Wanted:

Looking for OLD issues of Beltrami Electric Cooperative's Northern Lights newsletter, between the 1940s-1960s. Please contact Angela at Beltrami Electric or call 218-444-3689.

Older pontoon with aluminum tanks 507-282-8546.

Pet sitting: Retired teacher will love and care for your pet while you're gone. 218-766-6510.

Buying jet skis, runners and projects. Also looking for older skidoo/motoski/Yamaha snowmobiles. Elan/Olympic/Nordic/Tundra). Call or text 218-760-7481.

30-gallon steel drum w/both ends intact, no rust holes. 218-224-3405.

Floor scrubber/buffer, 14"-17." 218-766-1656.

Youth deer rifle: .243 Browning Micro or Mossberg Patriot ideal. Text pic and price to 218-368-2424.

Free:

Manual ice auger, winter jigging sticks, some warm winter clothes. 218-586-2884.



Need help paying your electric bill?

The Energy Assistance Program (EAP) helps pay for home heating costs and furnace repairs for income-qualified households. We urge you to contact them immediately to avoid disconnection if you feel you are eligible for aid. (Eligibility is based on energy costs, household size and the three most recent months of income.)

Bi-CAP in Bemidji

6603 Bemidji Ave N, Bemidji, MN 56601
218-751-4631

Bi-CAP in Walker

8245 Industrial Park Rd NW, Walker, MN 56484
218-547-3438

KOOTASCA

201 4th St. NW, Suite 130, Grand Rapids, MN 55744
218-999-0824

Leech Lake

115 6th St. NW, Cass Lake, MN 56633
218-335-3783

MAHUBE-OTWA

120 North Central Ave, Park Rapids, MN 56470
218-732-7204

Red Lake

15809 High School Dr., Red Lake, MN 56671
218-679-3350

2022 Maximum EAP Income Guidelines

Household Size	3-month Maximum	Household Size	3-month Maximum
1	\$8,809	4	\$16,941
2	\$11,520	5	\$19,651
3	\$14,230	6	\$22,362

Visit <https://mn.gov/commerce/consumers/consumer-assistance/energy-assistance/> for more EAP income guidelines and program information.

BOARD MEETING HIGHLIGHTS

Beltrami Electric Cooperative's board of directors conducted its regular monthly meeting Wednesday, Nov. 24, 2021. A quorum of directors was in attendance.

The following reports were given:

- President and CEO Echemnach and the board discussed recent safety successes and observations.
- President and CEO Echemnach gave his monthly report, including October financials, legislative issues affecting cooperatives, an employee update, railroad crossing, COVID-19 update and meetings attended.
- Arlene Hogquist gave the financial report for October and discussed unclaimed capital credits.
- President and CEO Echemnach and the management team reviewed the preliminary 2022 budget and work plan.
- Chair Lund appointed Bob Wallner as the MREA voting delegate and Sharon Lembke as the alternate.

- Rick Coe reported on Minnkota Power.
- Sue Kringsen and Craig Gaasvig reported on the Cooperative Network annual meeting.
- Chair Lund and President and CEO Echemnach reported on Cooperative Development.

The following actions were taken:

- Approved the consent agenda.
- Approved scholarships paid out of unclaimed capital credits.
- Approved a year-end employee bonus.
- Approved the Wholesale Power Contact Extension.
- Approved the director and president and CEO expenses.

The next board meeting will be Wednesday, Jan. 26, 2022.

National

CUT YOUR 

ENERGY COSTS

Day

JANUARY 10, 2022

Here are 5 tips to help you save this winter

Minnesotans are no strangers to below-freezing temperatures. As concerns about high heating bills mount, Beltrami Electric Cooperative continues to support its members with reliable electric service and ways to save energy during times of increased use.

Reliability is especially important in extreme cold weather. Last year's historic February winter storm that led to rolling blackouts in parts of the southern U.S. and Midwest demonstrated the essential role electricity plays in powering our lives. The ongoing global concerns about energy supply further reinforce the benefits of reliability and affordability that come from embracing an all-of-the-above energy strategy. Your cooperative uses a diverse mix of coal, wind and hydro power to meet your 24/7 needs. Electric cooperatives encourage members to take advantage of options available to better manage energy use and make a meaningful impact on monthly bills.



1) Check out your co-op's off-peak program

Members who participate in the off-peak electric heating and water heating programs have seen rates remain relatively flat in recent years, while fossil fuel prices fluctuate consistently. In exchange for the discounted off-peak electric rate (about half the retail rate), consumers voluntarily allow electric heating systems and other interruptible loads to be temporarily turned off or switched to a backup fuel source (like propane) during periods of high demand for electricity across the region. Check with your cooperative about great new incentives and rebates that are available for the installation of new off-peak electric heating systems.



2) Weather seal your windows and doors

You'd be surprised to know how much cold air can leak into the home through minor cracks and gaps in windows and doorways. Seal any gaps with a fresh bead of caulk or weatherstripping. You can also install insulating gaskets behind outlet covers and switch plates, while door sweeps help seal the space between the bottom of your door and the door frame. Having a contractor come out and professionally seal your windows and doors or recommend more energy efficient options can be a great way to upgrade your home and save energy.



3) Lower the water heater temperature

Your water heater is one of the highest energy users in your home. Some manufacturers set water heater thermostats at 140°, but most households usually only require them to be set at 120°. For each 10-degree reduction in water temperature, you can save about 5% in energy costs.



4) Check your furnace regularly

Make sure to change your furnace filter regularly. Contact a heating/ventilation/air conditioning (HVAC) professional to inspect/maintain your system as needed. Early attention to maintenance can help prevent failures in the heart of heating season.



5) Upgrade your home's insulation

Air that transfers in and out of homes through cracks, crevices and holes can increase energy consumption. By upgrading your home's insulation, you can save up to 30% on your energy costs. If you have R-19 or less insulation in your attic, consider bringing it up to R-49. If you have R-11 or less floor insulation, consider bringing it up to R-25.

Having trouble paying your bill?

If you are a cooperative member having trouble paying your electric bill, contact Beltrami Electric to discuss payment plans and receive information on other energy assistance programs and resources for income-qualified households to help with home heating costs and furnace repairs.



Beltrami Electric Cooperative Inc.

Your Touchstone Energy® Cooperative 

4111 Technology Dr NW
PO Box 488
Bemidji, MN 56619-0488
218-444-2540 • 800-955-6083
www.beltramielectric.com

COLD-CLIMATE HEAT PUMPS

Your perfect winter accessory

Have you heard the old rumor that air-source heat pumps just can't keep up with the extreme cold in our neck of the woods? Times have changed, my friend – cold-climate heat pumps (CCHPs) are now the hot-ticket item for every Minnesota home.

CCHPs take the design of an air-source heat pump and kick it up a notch. They integrate a variable speed drive compressor into the technology, keeping CCHPs highly efficient even when the thermometer hits zero. In fact, they've been given higher Heating Season Performance Factor (HSPF) ratings than standard air-source heat pumps.

JUST HOW EFFICIENT ARE CCHPS?

- When temperatures drop to below 47 degrees, CCHPs can run at 400% efficiency.
- At zero degrees, they still perform at 200% efficiency.
- Some companies even say their models remain efficient at as low as 20 below zero.
- Research has shown that CCHPs have been able to supply 90% of a home's heating needs with a 250% overall seasonal efficiency. That's pretty great, and it will save you a lot of money – especially with the volatile pricing of propane and natural gas these days.

Beltrami Electric Cooperative also offers a huge rebate and a reduced electric rate if you install your CCHP on the off-peak program. All you have to do is include a backup fuel source for the times when electric demand peaks – usually around 100-150 hours a year.

The added bonus of a CCHP is, like a standard air-source heat pump, the unit also provides your home cooling in the summer. The process is the same whatever the season. The heat pump pulls heat out of the outside air and pushes it inside in the winter, and pulls heat out of your home and expels it outside in the summer. Your house remains consistently comfortable during any wild Midwest temperature swings.

Contact Beltrami Electric today to learn how you can save big and stay warm with a cold-climate heat pump!

UP TO \$650/TON IN REBATES!

