

NORTHERN

L I G H T S

June 2022

2022 Energy Resources Tour

Tuesday - Thursday, July 19-21, 2022



Beltrami Electric Cooperative Inc.

Your Touchstone Energy® Cooperative 

Beltrami Electric Cooperative (BEC) plans to host an Energy Resources Tour for members July 19-21. The tour will include Minnkota Power Cooperative's headquarters in Grand Forks, the Milton R. Young generation station near Center, N.D., the open-pit lignite mines (weather permitting), Oliver III Wind Energy, the Garrison Dam and the Lewis & Clark Interpretive Center/Fort Mandan. Guests will travel on a charter bus from Bemidji Bus Lines and enjoy a two-night stay at the Comfort Inn & Suites in Mandan, N.D.

We encourage BEC members who have not been on this trip in the past to consider attending this fun and educational experience. The cost to members for the three-day trip is \$100 per person, or \$175 per double occupancy, which covers the bus fare, hotel, tours and meals. The tour is limited to ages 12 and older. Children 12 and older attend free with a parent/guardian.

This engaging, in-depth energy tour will help you gain a better understanding of the process involved in generating the electricity that serves you. Space is limited and this trip fills fast, so don't delay in signing up.

To reserve your spot, contact Angela Lyseng at **218-444-3689**, complete the registration form below and send it in with your payment. If it becomes necessary for you to cancel, you are required to notify BEC at least two business days before departure to be eligible for a refund. Registration for the trip is on a first-come, first-served basis with a limited number of openings. If you have previously taken the trip, you will be put on a space availability standby list.



Milton R. Young Station



Oliver III Wind Energy



Garrison Dam

Use the form below and send with your payment of \$100 per person or \$175 per couple.

Please print names of participants the way you would like them to appear on your name tags. We will send further details prior to departure. Mail this form to:

**Beltrami Electric Cooperative, Attn: Energy Resources Tour Sign Up,
P.O. Box 488, Bemidji, MN 56619**

Name of participant: (note age if under 18) _____

Name of participant: (note age if under 18) _____

Mailing Address: _____

Email: _____ Telephone Number: _____

BEC Account #: _____ Dietary Needs: _____

NORTHERN

L I G H T S

Northern Lights (USPS 016488), Vol. 69, No. 6

Northern Lights is published monthly by Beltrami Electric Cooperative Inc., 4111 Technology Drive NW, Bemidji, Minnesota 56601-5128. Subscription rate \$5. Periodicals postage paid at Bemidji, MN 56601.

Postmaster: Please send address corrections to Beltrami Electric Cooperative Inc., P.O. Box 488, Bemidji, Minnesota 56619-0488.

Office Hours: 8 a.m. to 4:30 p.m.
Monday – Friday

Member Service: 218-444-2540
or 1-800-955-6083

www.beltramielectric.com

Board of Directors

Chair	John Lund, DISTRICT 7
Vice Chair	Sue Kringen, DISTRICT 8
Secretary	Murl Nord, DISTRICT 1 (Square Butte Director)
Treasurer	Sharon Lembke, DISTRICT 9
Directors:	Charlie Perkins, DISTRICT 2; Michael Monsrud, DISTRICT 3; Craig Gaasvig, DISTRICT 4; Robert Wallner, DISTRICT 5; Rick Coe, DISTRICT 6 (Minnkota Director)
President and CEO	Jared Echternach
Editor	Angela Lyseng

Minnesota State Electrical Inspectors

Beltrami County

Wade Koons

218-255-3011 - wade@koonsinspections.com

Cass and Hubbard Counties

Brandon Disselbrett

218-640-0187 - disselbrett@hotmail.com

These are the inspectors covering the area served by Beltrami Electric. They can be reached by phone Monday through Friday between 7 and 8:30 a.m. or by email as indicated.

Gopher State One Call 811
1-800-252-1166 or 811
www.gopherstateonecall.org

Anyone who plans to dig is required by law to notify the state of their intentions at least 48 hours in advance.

All digging requires the 48-hour notification so that buried telephone lines, television cables, pipelines, utility electrical lines, and municipal water and sewer lines can be located to ensure that none will be severed or damaged.

Mission of Beltrami Electric Co-op

To provide excellent value to our members through the safe delivery of reliable electric service, excellent member service and innovative energy solutions at fair and reasonable prices.

This institution is an equal opportunity provider and employer.



How is your cooperative doing?

by Jared Echternach, president and CEO

How are we doing?

Every few years in advance of strategic planning, we survey our membership to see how we are performing. We have contracted with a third party to survey our membership in June to help us determine not only our performance and member satisfaction, but what is most important to our members. The survey methodology will be a blend of both phone calls and electronic surveys. If you are contacted by Bellomy Market Research, we ask that you please participate in this brief survey to help your board of directors and employees plan for our future. Your candid input is important and greatly appreciated. Please see the notice in this newsletter for additional details and timing.



Annual and district meetings

This year's annual meeting will be held Wednesday, Aug. 10, at the Beltrami County Fairgrounds in conjunction with the Beltrami County Fair. Last year was our first annual meeting held in conjunction with the fair and it was such a



success, we are delighted to partner again with the Beltrami County Fair Board to host our annual meeting.

As part of the election process, your cooperative will hold three

district meetings in June, at which candidates may be nominated to serve on the board. Seats in District 1, currently served by Murl Nord, District 5, currently served by Bob Wallner, and District 8, currently served by Sue Kringen, are up for election this year. Each of the incumbents have indicated their interest in running.

Candidates interested in running for the board must complete and submit to the cooperative a candidate packet no later than five business days prior to the district meeting in which the candidate seeks to run. Please see the detailed information in this issue for meeting locations, dates and times. If you are interested in learning more about serving on your cooperative's board, please feel free to contact me to request a director candidate packet. Additional information can be found on our website at www.beltramielectric.com.

Congratulations to Dan Hogquist

Warehouseman/Journeyman Lineworker Dan Hogquist retired this month, and I'd like to personally thank Dan for his 39 years of service to our cooperative members. Not only did Dan help keep the lights on for decades, but he also managed our inventory, making the most of our cooperative's resources and ensuring our crews had the material needed to construct and maintain our system in a safe and efficient manner. Dan was always willing to chip in wherever needed and his dedication to our cooperative and our members will be greatly missed. Thank you, Dan, for your excellent service to our members. I wish you a long and healthy retirement.

RESILIENT BY DESIGN

Resiliency isn't just an aspect of our business at Beltrami Electric Cooperative. It's who we are. It sets us apart from other utilities and drives the dedication and commitment our members have come to expect over the last eight decades. Resiliency doesn't happen by chance. And it cannot be quickly manufactured. It's instilled in our people and equips them with the toughness and resolve to face any challenge – from snowstorms to cyber threats. As the energy transition continues to accelerate, Beltrami's roots are growing stronger. Our generation facilities are durable and dependable. Our power grid is becoming smarter and more efficient. And our vision for reliable and responsible power is becoming clearer. We don't flinch in the face of adversity. We thrive in it. We're resilient by design.

Here are five strengths that help keep your electric service reliable and resilient.



Our people are dedicated

Your cooperative's employees are committed to ensuring you have reliable electricity 24 hours a day. When storms strike and harsh weather conditions cover our area, you can count on the fact that your cooperative is ready to respond.

Strong weatherization practices

Your cooperative's service area covers rugged terrain where power lines and other infrastructure must be built to stand up to the harshest conditions Mother Nature can dole out. The systems are designed to endure everything from scorching summer days to 30-below-zero polar vortex events – not to mention wind, snow, ice and rain pounding down year after year. While power outages still occur, we are constantly working to make our system more reliable with each passing year.

Embrace of technology

As more technology is added to the electric grid, cybersecurity has become an essential part of our business. We are in a continual state of assessing our network and systems as threats evolve and become more complex.

Cooperative business model

As a cooperative, our business model is built on resiliency. We are owned by the members we serve, which means every member has a voice in how we operate. This unique structure allows us to be more responsive to changing circumstances. Simply put, our focus is always on providing you with the best possible service at the lowest possible cost.

Reliable generation resources

Through Minnkota Power Cooperative, our wholesale power provider, we have access to a diverse energy mix consisting of coal, wind and hydro resources. Coal is the most resilient resource in our power portfolio because it is able to operate dependably no matter if it is 100 degrees or 30 below zero.

NAVIGATING ELECTRICITY TRAFFIC JAMS

with the off-peak program

Just as a big city has traffic jams, the electric grid of Beltrami Electric Cooperative runs into its own energy rush hours. This happens when people across the region are using a lot of electricity at the same time. Early-morning and evening hours are common times for these high energy demand periods, when people are active at home. Extreme weather events that require heating and cooling systems to run nonstop can drive demand for electricity even higher – above the available supply.

Cities don't build new highway systems to accommodate a few hours of traffic – and Minnkota Power Cooperative (our wholesale electricity provider) doesn't build additional power plants for the times each year when electricity demand reaches its peak.

There's a better way.

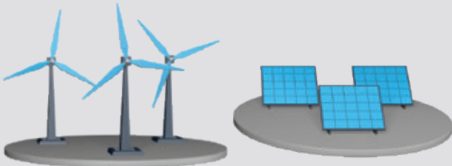
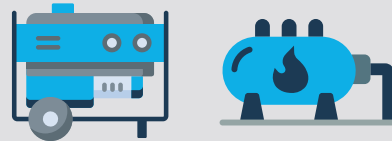
If Minnkota isn't able to economically purchase the additional energy it needs from the regional market or another utility, the off-peak program launches into action. This program can remove one-third of the electrical demand from the system during the highest peak periods. Over the last four decades, the program has helped strengthen the reliability of the grid, while protecting your pocketbook with low-cost off-peak electric rates that keep your home cozy and comfortable when it's a bone-chilling -40° or a sunbaked and sticky 95°.

HOW DOES IT WORK?

Electricity consumers in our region voluntarily sign up for the program, which allows Minnkota to temporarily turn off electric heating, water heating, vehicle chargers and commercial account service.



During these "control periods," most consumers are automatically switched to a backup heating system or generator.



As more intermittent resources like wind and solar are added to our grid, maintaining reliable and resilient electricity is becoming more complex. The off-peak program is a perfect tool to help manage the fluctuations of these resources.



When Minnkota avoids purchasing additional power and navigates energy rush hours, the savings are passed on to consumers through a lower electric rate. It's a true win-win-win for the grid, the cooperative and you, the member.

If you are interested in learning more about our off-peak program, contact our co-op office at 218-444-2540.

**WANT TO SEE
THE VIDEO?**



**SCAN THIS CODE
WITH YOUR PHONE!**

CLASSIFIEDS

Classified ads rules

- Ads are due by the first of the month prior to publication of the next issue.
 - Ads submitted by June 1 will be published in July issue.
 - Ads submitted between June 2 and July 1 will be published in August issue.
- Ads may be submitted via our website at www.beltramelectric.com. (preferred)
- No real estate, rental, personal or commercial ads will be accepted.
- All ads must be 50 words or less and typed or printed clearly.
- Editor reserves the right to edit or reject any ad.
- Members may only submit one for sale and one wanted or free ad per issue.
- Ads are published at no charge as space permits on a first-received, first-printed basis, **with no guarantee your ad will appear.**
- Ads are only allowed to be repeated for **three consecutive months** and must be resubmitted each month.
- Include name and Beltrami Electric account number on all submissions.

For Sale:

Moline 445 tractor, runs good. \$2,500. 218-556-1382.

Covered solar powered 3,500-lb. boat lift \$2,500. 605-430-6145.

Hoyt Xtec bow: Draw 40-80 lbs. 310 fps, 75% let off, mech release, quiver, stabilizer, sights, 9 arrows, broadheads and field tips, soft padded and hard plastic cases, block target. Package: \$425. Collectable: Fred Bear leather quiver, 19 cedar arrows, hunting and field tips, \$150. Lawrence X-51 depth finder/transducer, \$30. 218-243-3375.

Bradford White 80-gal electric water heater used less than one year. \$1,800/obo. Excellent working condition. Must pick up. 218-316-4055.

1975 20-ft Slickcraft with 188 Merc I/O. Small cuddly cabin. EZ Loader trailer. Boat in storage for 15 years. Best offer. Call between 10 a.m. and 6 p.m. 218-209-1351.

Youth bow with three arrows and hard case. Exc. cond. \$250. Nexen tires, 235/40R19. Good cond. Set of four tires \$80. 218-368-4834.

Border Collie/Golden Retriever puppies called Gollies. This breed is inquisitive, intelligent, energetic and affectionate. Only males left. We used early neurological stimulation with our puppies to ensure calm adults. \$450. Call Patti at 218-760-3095.

'92, 60 hp Mariner, tiller, power tilt/trim, needs rebuilding \$400/obo. NordicTrack treadmill, EXP 1000i, commercial grade, excellent condition \$600/obo. Used Whirlpool flat top electric range \$100/obo, used Whirlpool dishwasher \$75/obo. '02 Polaris 600 Twin Sportsman w/snowplow, Great shape \$3300/obo. 218-766-8813.

Ladies Cruiser bike, 26 in, one speed, coaster brakes. Very good condition. \$75. 218-368-0385.

GARAGE CLEANING: ladders, 1 ft to 8 ft, prices \$5-\$20 each. Extension cords, 12-gauge, 20 ft long, \$20 each. Shovels, dirt and snow, \$10 to \$20 each. Six different kinds of rakes, \$15 each. Looper \$20. 218-224-2457, leave message.

1997 HARLEY DAVIDSON Sportster 1200cc, black, 16,000 mi. Quick detach windshield, padded passenger backrest, chrome engine guards, chrome grips. Helmet and manuals incl. Very well cared for. \$3,000. Cash only. 218-751-6870.

1997 Buick LeSabre Limited. 220K miles, good running, 3.8L V-6 motor. Rust free. \$2,850. 612-418-2551.

John Deere 318 tractor looks like new. Riding Snapper lawn mower. Small white chest freezer, top opening, used one summer. 218-224-2547.

14-ft Lund boat, camo paint, trailer w/lifetime license, \$575. Sun Lite pickup camper, pop-up, estimate 1995, sleeps 4, fridge, sink, stove, heater, \$200. 218-766-2008.

12' x 7' steel overhead door, all parts to install, new \$475, will sell for \$150. 10' Craftsman table saw, \$85. 218-835-4233.

Homemade quilts: 4-5-6-inch Block, Crazy, Star, Twin: \$40, full, \$45, queen, \$65, king, \$70. New super all-grip 700-15 L.T. tubeless tire, \$40. 3-drawer dresser: 44" L x 19.5" D, 1 drawer 4-inch deep, 2 drawers 39" long, 8" deep, been restored, \$75. Sewing machines, \$15 each. 218-243-2702.

Honda self-propelled push lawn mower. Like new, only used two times, \$199. 218-335-2328.

15' 4" fiberglass Peenoe. Camouflage with 2 high-back swivel seats and seat/live well. Will take up to 10 hp motor. Excellent condition. \$850. 218-766-7753.

Tractor wheel weights F&H W-161, \$75. 20-ton MTD wood splitter in very good shape, \$650.

Antique metal pie safe, \$150/obo. Old dome-top trunk, \$30. Old radio cabinet, tall, on legs, no radio, \$50. 21" Insignia smart TV, works good, \$50. Old dresser, \$50. Call 218-255-5808.

Huge moving sale: Lots of hand, power and garden tools. Alis Chalmers W. D. wide front tractor. New front tires and paint job, runs good. Also 3-point back blade, all steel front mount saw rig, Sears heavy duty brush cutter. 218-308-4025.

Quilted queen bedspread, 2 bolster pillows, muted beige print, \$30. Rustic coat rack, driftwood with deer antler hooks, perfect for cabin or Northwoods home, \$80. Electric golf cart with charger, \$1,200. Medium size upright freezer, \$100. 40 t-shirts, assorted sizes and colors, \$3 each. 218-586-2884.

1 full box 250-3000 100 grain rifle shells, also 9 empty casings, \$30. 651-402-4846.

Electric lift chair, like new. \$450. 16-ft aluminum ladder, \$50. Five 3-ft x 5-ft heavy duty fatigue mats, \$20 each. 218-586-2534.

2 office chairs in new condition (black), one wooden desk chair, \$50 each. Outside cat heated bed, \$40, never used pd \$80. Electric pet waterer, \$20. Cash only. Text 218-209-1863.

Football cards for sale. Lots. Autos, mems, inserts, prisms, rookies. All NFL teams. Make an offer. Let me know what you want. 218-820-1603.

Seasonal RV spot available at a resort near Bemidji. Can accommodate a 5th wheel. 218-390-7883.

Beautiful flowers! Local organic flower farmer wants to deliver four weekly bouquets at one monthly price of \$100. Annuals, perennials and herbs. Every bouquet will surprise you. Call 218-556-0586.

Wanted:

Pet sitting, retired teacher, will care and love your pet while you are gone. 218-766-6510.

1 1/2" gravel (approx.) for long driveway, my 5yd dump truck. Lake George area. I can load it if needed. Price per yard? 218-224-2959.

Free garden décor. 218-556-2743.

Crestliner boat seat for 2000-2004 Crestliner '02 Fishhawk boat, cream colored or close in color. 218-835-4331.

Free canning jars – all sizes, w/lids, rims, all shapes, all colors. A wooden church pew, any length, preferably 9-ft. Call or text 206-552-1399.

Antique outside water pump complete. 30-30 lever-action rifle. Text 218-209-1863.

BOARD MEETING HIGHLIGHTS

Beltrami's board conducted its regular monthly meeting Wednesday, April 27, 2022. A quorum of directors was present.

The following reports were given:

- President and CEO Echternach and the board discussed upcoming safety training events, successes and observations.
- President and CEO Echternach gave his monthly report, including employee updates, obsolete equipment auction and legislative issues affecting the cooperative.
- President and CEO Echternach presented an updated estate electric account transfer procedure.
- President and CEO Echternach presented an Enbridge solar video.
- Arlene Hogquist presented the March financial report.
- Arlene Hogquist presented the first quarter balanced performance scorecard.
- Chair Lund appointed president and CEO Jared Echternach as the CoBank voting delegate.
- Murl Nord reported on Square Butte. Murl was elected as the Square Butte board secretary.
- Rick Coe reported on Minnesota Rural Electric Association.
- Rick Coe reported on Minnkota Power.
- BEC Policy Committee is scheduled to meet on May 17-18 in the BEC boardroom.
- Chair Lund appointed John Lund as the NCSA voting delegate with Jared Echternach as the alternate.

The following actions were taken:

- Approved the consent agenda.
- Approved a \$1,000 contribution to the CFC Integrity Fund.
- Approved the director and president and CEO expenses.

The next board meeting will be held Wednesday, June 29, 2022.

Statement of Operations Year-to-date: March 2022

	March 2021	March 2022
Operating Revenue.....	\$ 16,552,485	\$ 17,496,232
Cost of Purchased Power.....	\$ 10,614,669	\$ 11,121,322
Other Operating Expenses.....	\$ 4,183,110	\$ 4,150,925
Total Cost.....	\$ 14,797,779	\$ 15,272,247
Operating Margin.....	\$ 1,754,706	\$ 2,223,985
Other Margins.....	\$ (67,800)	\$ (280,786)
Total Margins.....	\$ 1,686,906	\$ 1,943,199
kWh Sold.....	151,373,812	159,569,552
Meters Billed.....	21,639	21,928



35¢



First bath for your new pup?

Powerful experience – powered by 35 cents of electric water heating



BELTRAMI ELECTRIC EMPLOYEE NEWS

Congratulations on your retirement, Dan!



We would like to congratulate warehouseman/journeyman lineworker Dan Hogquist on his retirement. Dan retired June 1, 2022, after 39 years at Beltrami Electric. Dan started at BEC in 1983 as an apprentice lineman. In June 2011, Dan accepted the position of warehouseman, where his attention to detail, strong organizational skills and willingness to always help truly benefited his coworkers and your cooperative. In retirement, Dan is looking forward to more camping, wood working, golfing and home improvement projects. "Beltrami Electric has been a great place to work, with great coworkers," said Dan. Thank you, Dan, for your dedicated service to the cooperative and our members. We wish you the very best for a long, happy and healthy retirement!

Welcome, new hires:



Tanner Turn - son of Vicki Turn and Rick Turn, recently joined Beltrami Electric in the line department as an apprentice lineworker. Tanner is a graduate of Bemidji High School and Minnesota State Community and Technical College in Wadena, Minn., where he completed the electrical

lineworker program. He has worked for Legacy Power Line, Cooperative Development, LLC., and as a seasonal lineworker at BEC in 2021. Tanner enjoys hunting, fishing and spending time outdoors. Welcome, Tanner!



Travis Voelkner - recently joined Beltrami Electric in the line department as an apprentice lineworker. Travis is a graduate of the electrical lineworker program at Northwest Lineman College in Boise, Idaho, and holds a Bachelor of Science degree in environmental studies from Bemidji State University. Travis has worked at Okay

Construction in Minnesota, EOG Resources in North Dakota and at BEC as a seasonal lineworker. He enjoys hunting, fishing, camping and canoeing. Travis and his wife, Laura, reside in Bemidji with their two sons, Jaxon and Sawyer. Welcome, Travis!

BELTRAMI ELECTRIC MEMBER SATISFACTION SURVEY

Beltrami Electric Cooperative (BEC) has contracted with Bellomy Market Research to conduct member satisfaction surveys this summer. Member feedback will be collected via telephone interviews as well as online surveys. Members will be randomly selected from telephone and email lists and asked to participate in the upcoming survey. The survey is expected to last no more than 15 minutes. By participating in our member satisfaction survey, you're helping us deliver on our mission of providing exceptional member services and the safe, reliable electric power you depend on!



Note: Satisfaction surveys to be conducted in June-July

TELEPHONE SURVEYS

- All survey calls will generally be made from a local area code.
- All survey calls will be displayed on caller ID as being from "Electric Co-op."
- All survey calls will primarily be made weeknights, from 5 p.m. to 8:30 p.m., with weekend calling limited to Saturday only (no Sunday calling is permitted).

ONLINE SURVEYS

- The "from" email will be labeled "Cooperative Difference

Survey" and can originate from two possible email addresses: cooperativesurvey@bellomyonline.com or cooperativesurvey@bellomymail.com.

- Both the email invitation and the survey will be branded with BEC's logo.
- The email invitation will include a link to the survey and a unique ID code. Members will be asked to type in the unique ID number provided.
- Online survey participants will have approximately seven (7) days to complete the survey.



Beltrami Electric Cooperative Inc.

Your Touchstone Energy® Cooperative 

4111 Technology Dr NW
PO Box 488
Bemidji, MN 56619-0488
218-444-2540 • 800-955-6083
www.beltramielectric.com

5 things you'll LOVE about **ELECTRIC LAWN CARE**

The warm weather has allowed flowers to finally bloom throughout your yard, but along with those flowers come weeds, thistles, and that crabgrass you swore you took care of last spring. Not to worry, you have some new tools in your tool kit that are going to help you maintain the best yard on the block—and they're electric!

No longer will you have to pull a stubborn cord on your grass trimmer to get it to start. By going electric, you only need to pop in a battery and press a button to take on any yard challenge – big or small. Whether it's a grass trimmer or a lawn mower, here are five things you'll love about electric lawn care!

1 No odor or harsh chemicals

Fresh cut grass will be the only thing you smell with electric lawn care equipment. Since there is no need for gas to power your equipment, you are not exposed to harsh odors.

2 Easy to stop and start

Electric grass trimmers are equipped with a button or switch that turns on the machine quieter and faster than a traditional two-stroke or four-stroke grass trimmer.

3 Less noise

Electric lawn mowers are built with less rumbly machinery so they make less noise than traditional gas-operated mowers. This means your lawn maintenance won't bother your neighbors no matter how close you are.

4 Light weight

On average, electric grass trimmers weigh less than seven pounds. The lighter, electric model is easier to tote around the lawn when tackling difficult, hard-to-reach weeds.

5 One battery does it all

One battery does more! Most electric grass trimmer brands have batteries that can be used in multiple tools, including leaf blowers, chainsaws and more!

